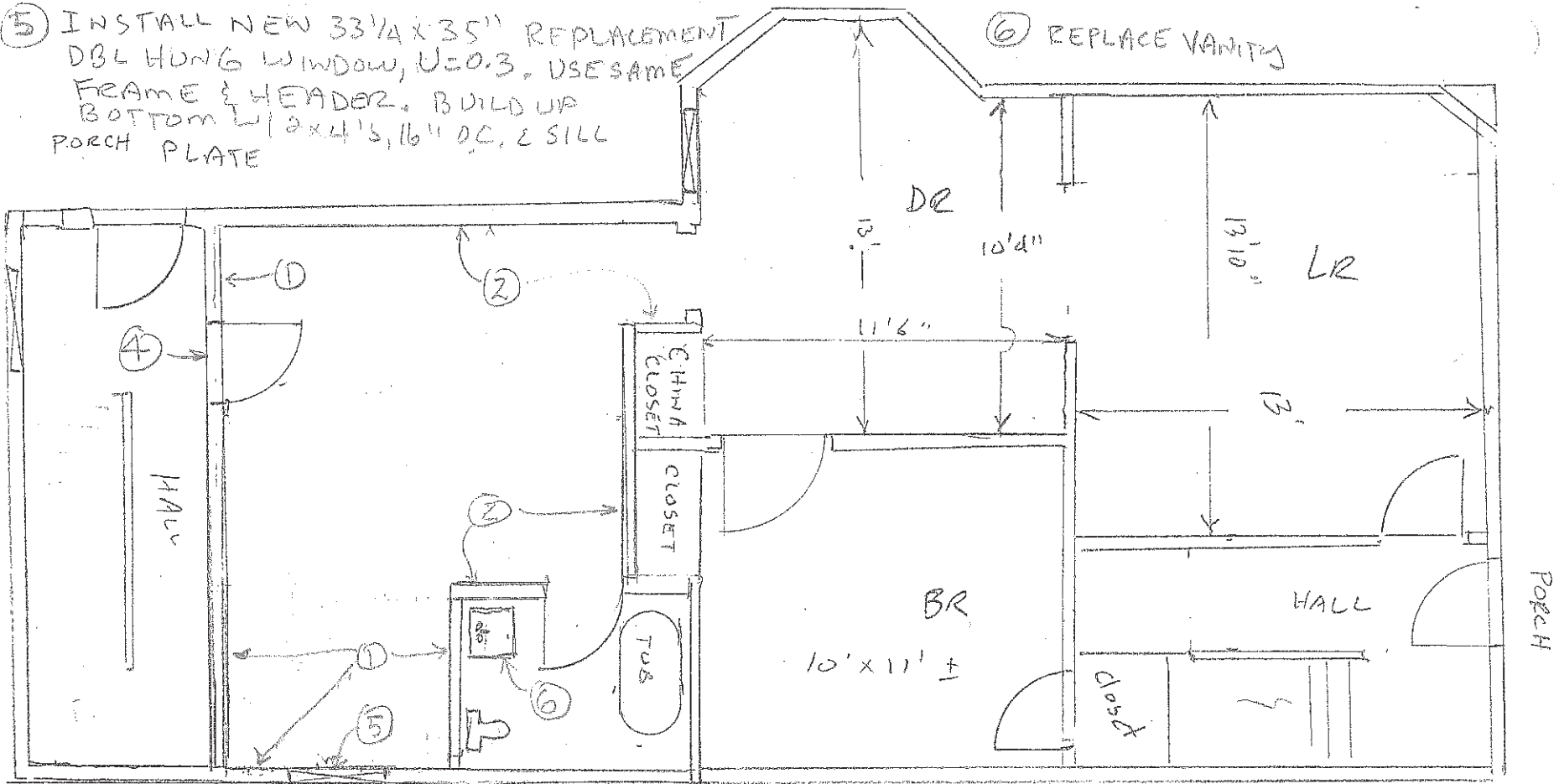


PROPOSED DOOR & WINDOW SCHEDULE:

④ PROP 1-HR RATED DOOR, 32 X 80", SELF CLOSE & LATCH

⑤ INSTALL NEW 33 1/4 X 35" REPLACEMENT DBL HUNG WINDOW, U=0.3, USE SAME FRAME & HEADER. BUILD UP BOTTOM W/ 2 X 4'S, 16" OC, & SILL PORCH PLATE

⑥ REPLACE VANITY

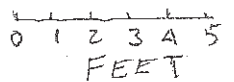


PROPOSED INTER. WALL COVERING:

- ① - 1/2" Gypsum, MOISTURE RESISTANT
- ② 1/2" Gypsum
- ③ CEILING - TWO LAYERS OF 5/8 SHEETROCK TYPE X, SEPARATED BY MIN. 1 X 2" FURRING STRIP, TAPE + MIN 2 COATS OF JT, COMPD. ON VISIBLE, LOWER LAYER

INSULATION:

- Ⓐ - FILL EXTERIOR WALLS & HALLWAY (4") AND CEILING (9") VOIDS W/ FIBERGLASS W/ VAPOR BARRIER. R-13, & R-25



89 IRVING ST
1ST FLR
A-3 MATERIALS
PLAN