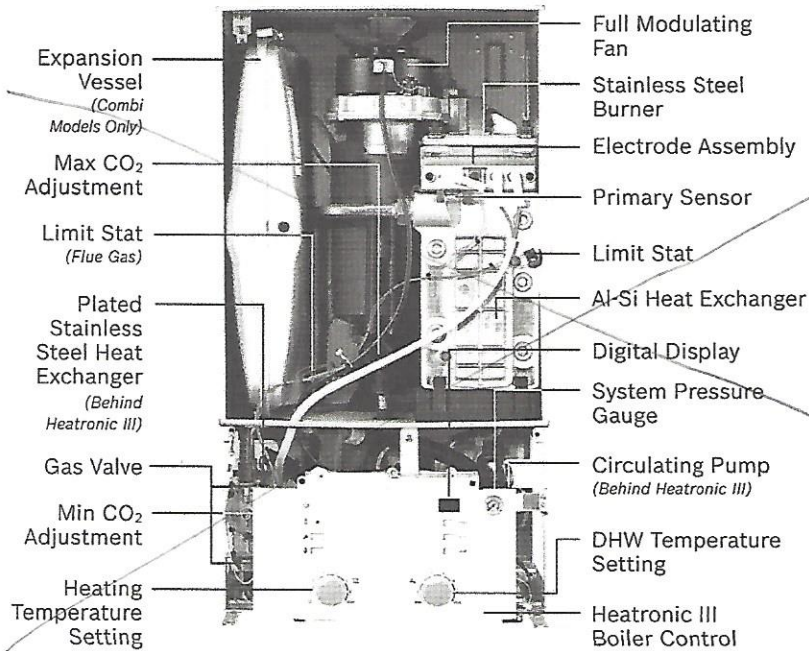
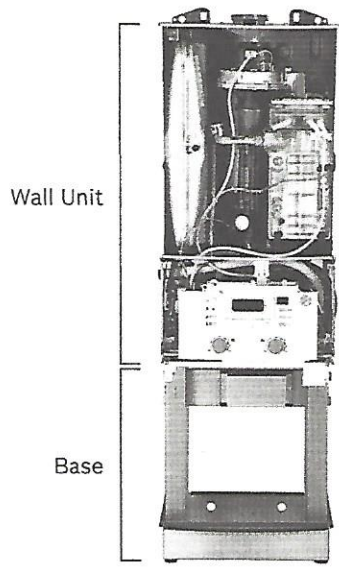


Greenstar Boiler – A Look Inside

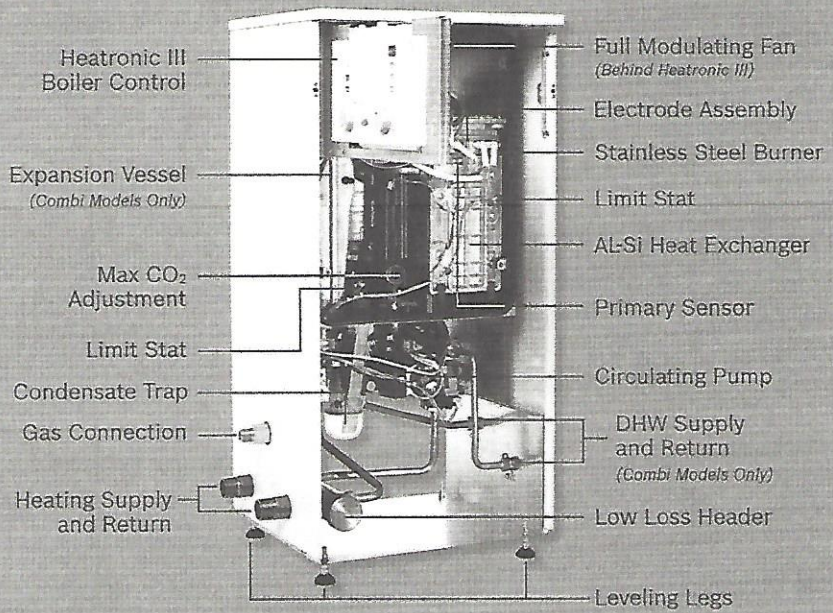


All Greenstar Models

- ▶ **Broad BTU Output Range:** Floor and Wall models with 95% AFUE and up to 5:1 modulation are available in 5 Heat-Only and 3 Combi sizes
- ▶ **Simplified Installation:** Integral pump is standard on all models
- ▶ **Coated Heat Exchanger:** Reduces scale build-up, reduces service, maintains high efficiency and extends the life of the boiler
- ▶ **Combi Models High DHW Output:** Up to 4 GPM DHW output on Combi models – based on ΔT at 72°F / 40°C. Large flat-plate heat exchanger allows for lower operating temperatures and larger ΔT in DHW mode for higher efficiency and condensing operation
- ▶ **Proven Reliability:** Over 2 million Greenstar boilers sold worldwide
- ▶ **Venting Material:** Options include polypropylene (PP), flexible PP chimney liner, concentric PP kit, PVC or CPVC



Greenstar FS Series



All Greenstar FS Series

- ▶ **Footprint:** Fits in the same footprint as an existing floor boiler, no added cost to build a wall or move the boiler to an outside wall
- ▶ **Piping:** Low loss header pre-piped "under-the-hood", no need for primary/secondary piping, pipes just like the existing boiler
- ▶ **Wiring:** Connection boxes (both high and low voltage) conveniently located on the back of the boiler for quick and easy connection
- ▶ **Controlling:** Simplified control, no programming required (control options sold separately)

Installer Benefits

- ▶ Ease of Installation
- ▶ Easy and Fast Replacement
- ▶ Trouble Free Set up
- ▶ Fast Service and Maintenance
- ▶ Multiple Installation Options for the Right Fit