

**Project No: 3884/ Store #3001**  
Domino's Pizza Bakery Store  
Pizza Theater Lobby Remodel  
788 Forest Ave., Portland, ME 04103  
for Boston Pie, Inc.  
100 Conifer Hill Dr. #402  
Danvers, MA 01923

ISSUED FOR PERMIT:  
03.11.16

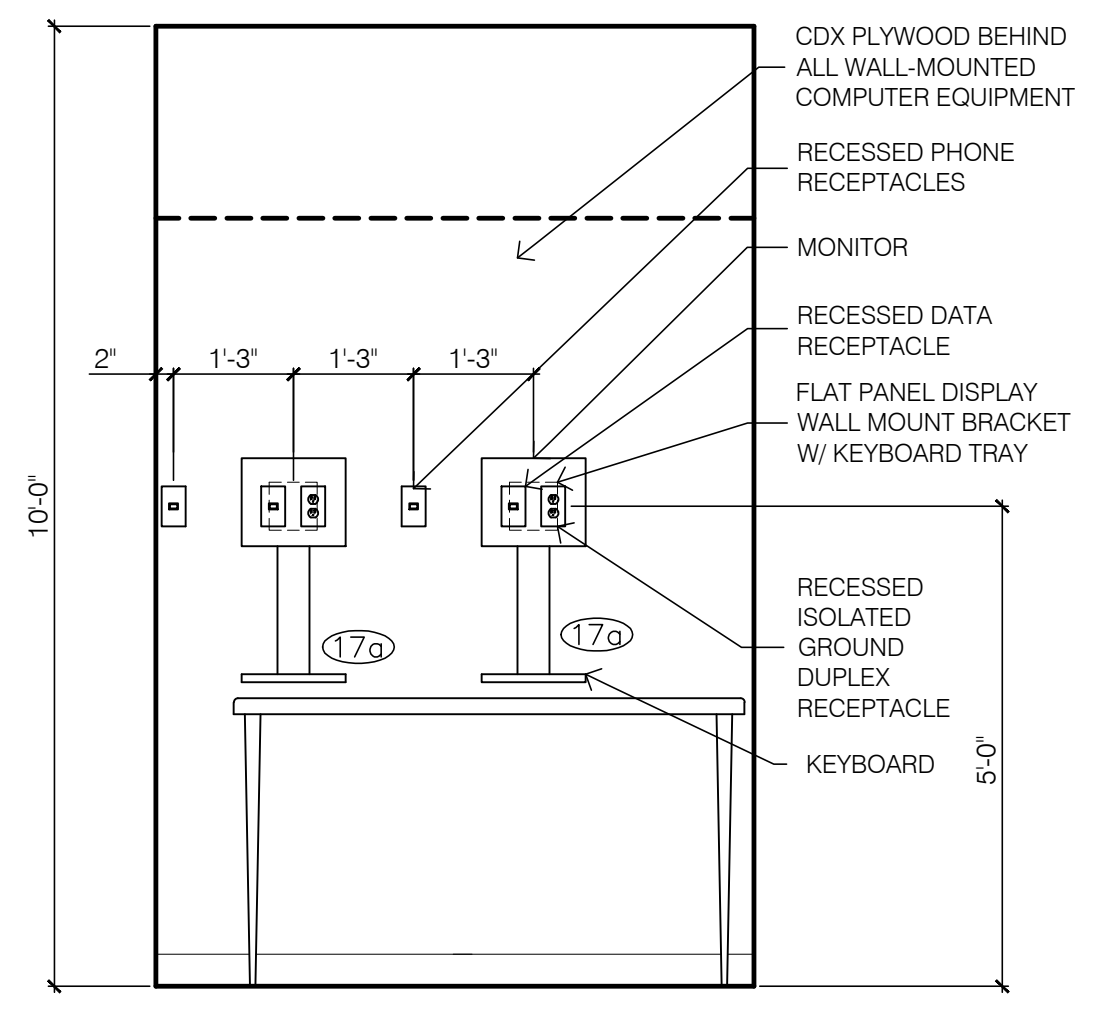
REV: DATE:	DESCRIPTION:
1 03.15.16	OWNER COMMENTS

SHEET NAME:

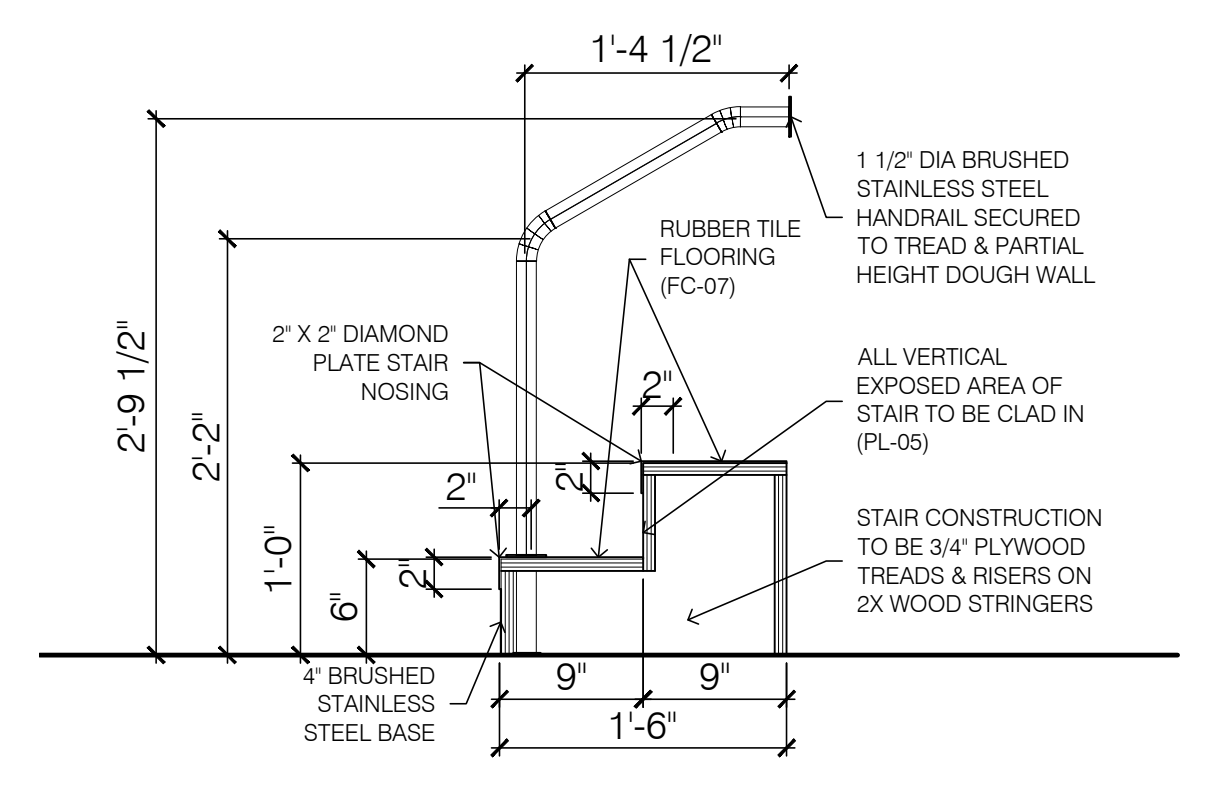
INTERIOR ELEVATIONS/  
DETAILS

SHEET NUMBER:

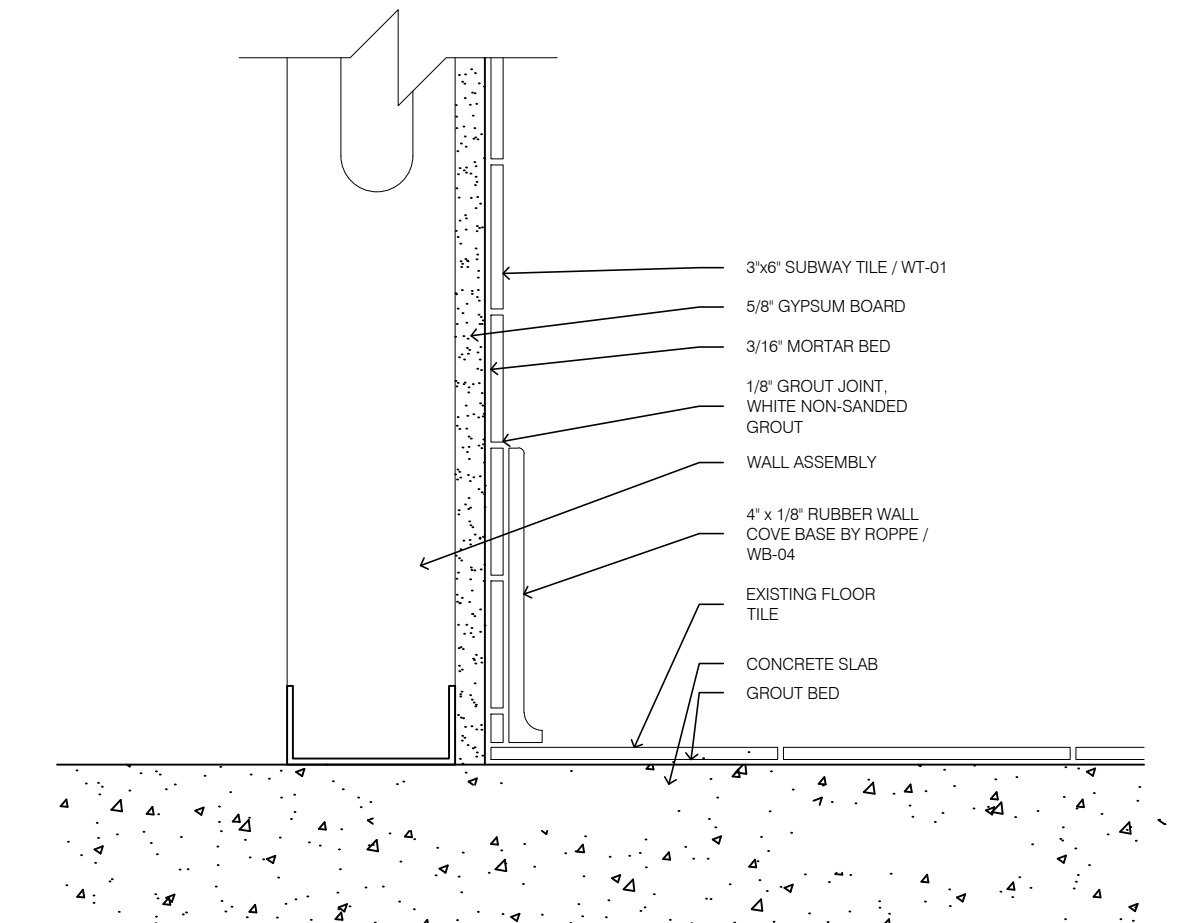
**A4.1**



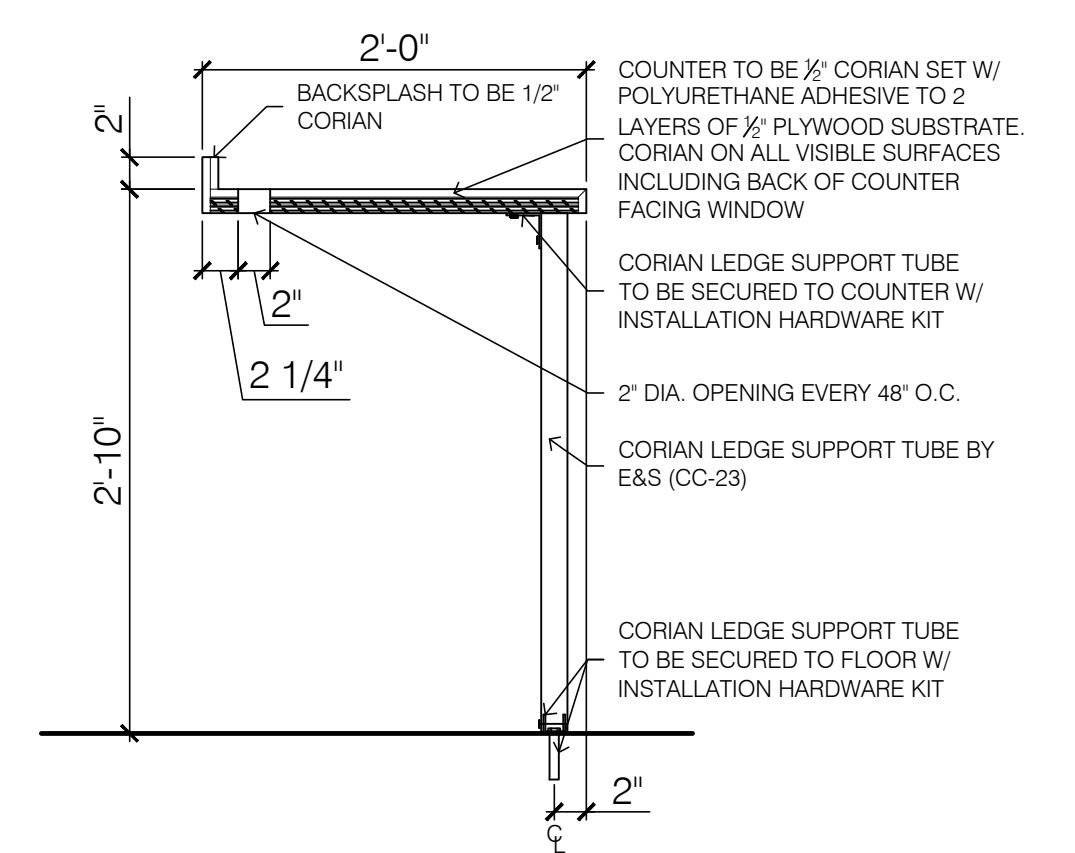
**3** ADDITIONAL POS TERMINALS (TYPICAL)  
SCALE: 1/2" = 1'-0"



**6** CHILD STEP SECTION  
SCALE: 1" = 1'-0"

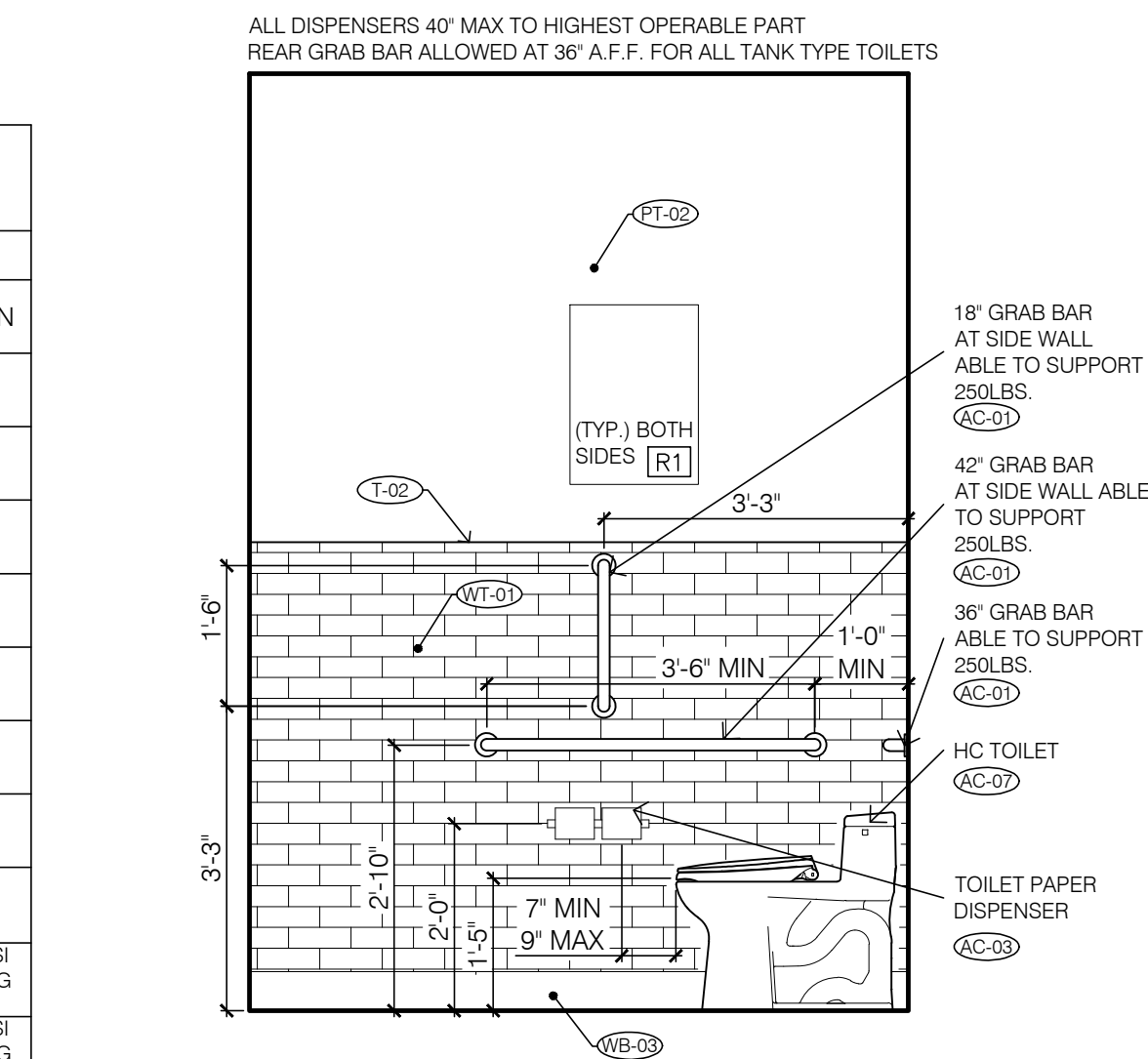


**5** B.O.H. RUBBER COVE DETAIL  
SCALE: 3" = 1'-0"

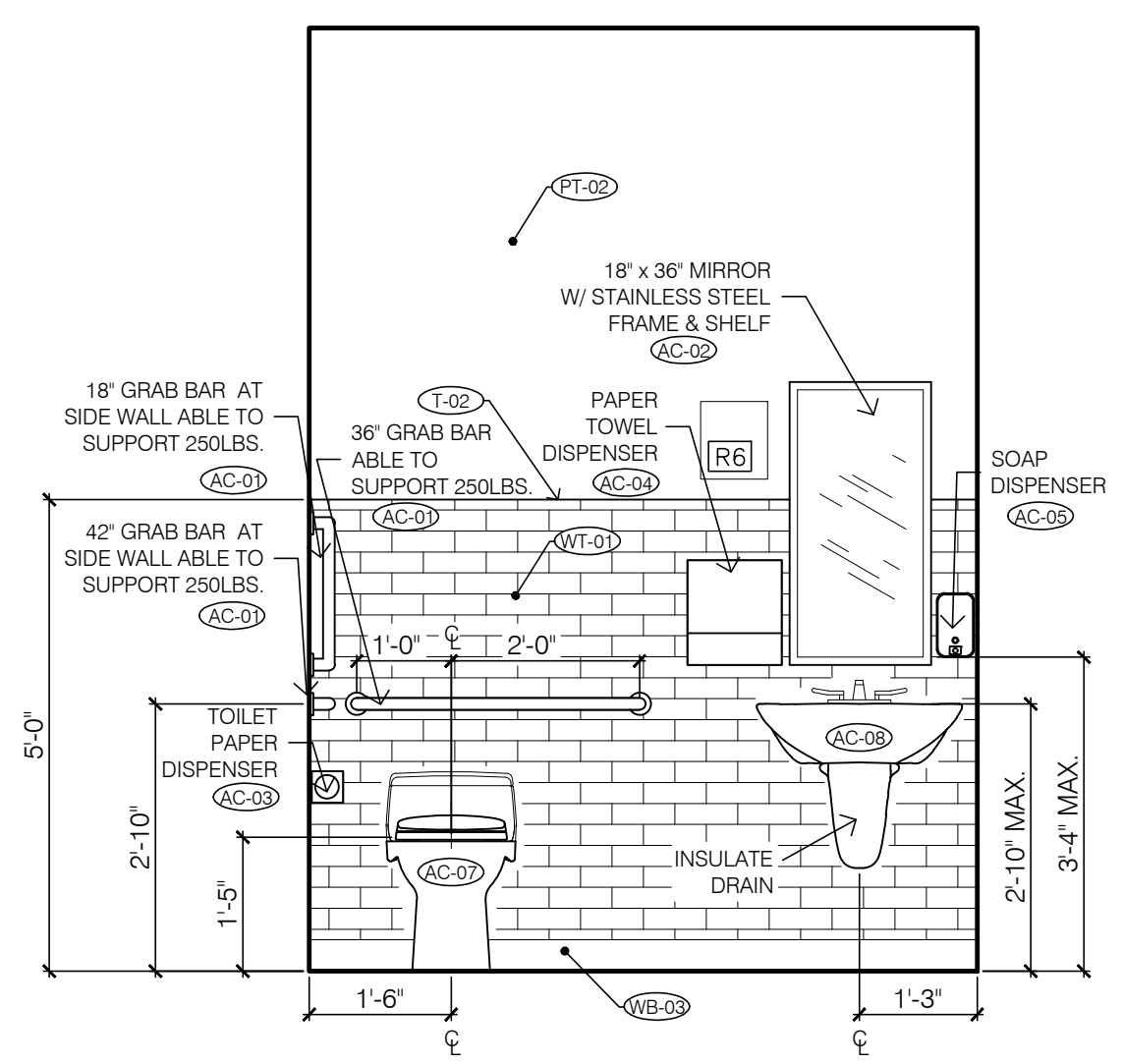


**4** 24" CORIAN WAITING LEDGE SECTION @ WINDOW  
SCALE: 1/2" = 1'-0"

TOILET ACCESSORY LEGEND (BY G.C.)						
MARK	MATERIAL	MANUFACTURER	MODEL #	COLOR	FINISH	COMMENT
AC-01	ADA GRAB BAR - 1.25" Ø	BOBRICK	B-5806	---	---	SIZE AND LOCATION ON PLAN
AC-02	MIRROR	BOBRICK	B-165 1836	---	---	WALL MOUNT
AC-03	TOILET PAPER DISPENSER	BOBRICK	B-265	---	---	WALL MOUNT
AC-04	PAPER TOWEL DISPENSER	BOBRICK	B-2620	---	---	WALL MOUNT
AC-05	SOAP DISPENSER	BOBRICK	B-2111	---	---	WALL MOUNT
AC-06	XLERATOR HIGH VELOCITY HAND DRYER	EXCEL DRYER INC.	XL-SB	---	S.S.	WALL MOUNT (OPTIONAL) SUBSTITUTE FOR AC-04
AC-07	ACCESSIBLE TOILET-LH	ZURN	Z5550	WHITE	---	LEFT HAND, FLOOR MOUNT, ELONGATED BOWL, OPEN FRONT SEAT
	ACCESSIBLE TOILET-RH	ZURN	Z5550-RH	WHITE	---	RIGHT HAND, FLOOR MOUNT, ELONGATED BOWL, OPEN FRONT SEAT
NOTE: FLUSH CONTROLS SHALL BE LOCATED ON THE OPEN SIDE OF WATER CLOSET						
AC-08	ACCESSIBLE SINK	ZURN	Z5340	WHITE	---	WALL MOUNT, MEETS ADA AND ANSI A117.1 REQUIREMENTS WHEN HUNG 34" A.F.F.
AC-09	ACCESSIBLE URINAL	ZURN	Z5730	WHITE	---	WALL MOUNT, MEETS ADA AND ANSI A117.1 REQUIREMENTS WHEN HUNG 17" A.F.F.



**2** RESTROOM ELEVATION  
SCALE: 1/2" = 1'-0"



**1** RESTROOM ELEVATION  
SCALE: 1/2" = 1'-0"