

DATE : 07-11-06
 SCALE : 1/4" = 1'-0"
 DESIGN BY: ASW
 DRAWN BY: RSC
 FILE #: 06183-A101.DWG
 PROJECT NUMBER:
06183
 SHEET NO:
A101

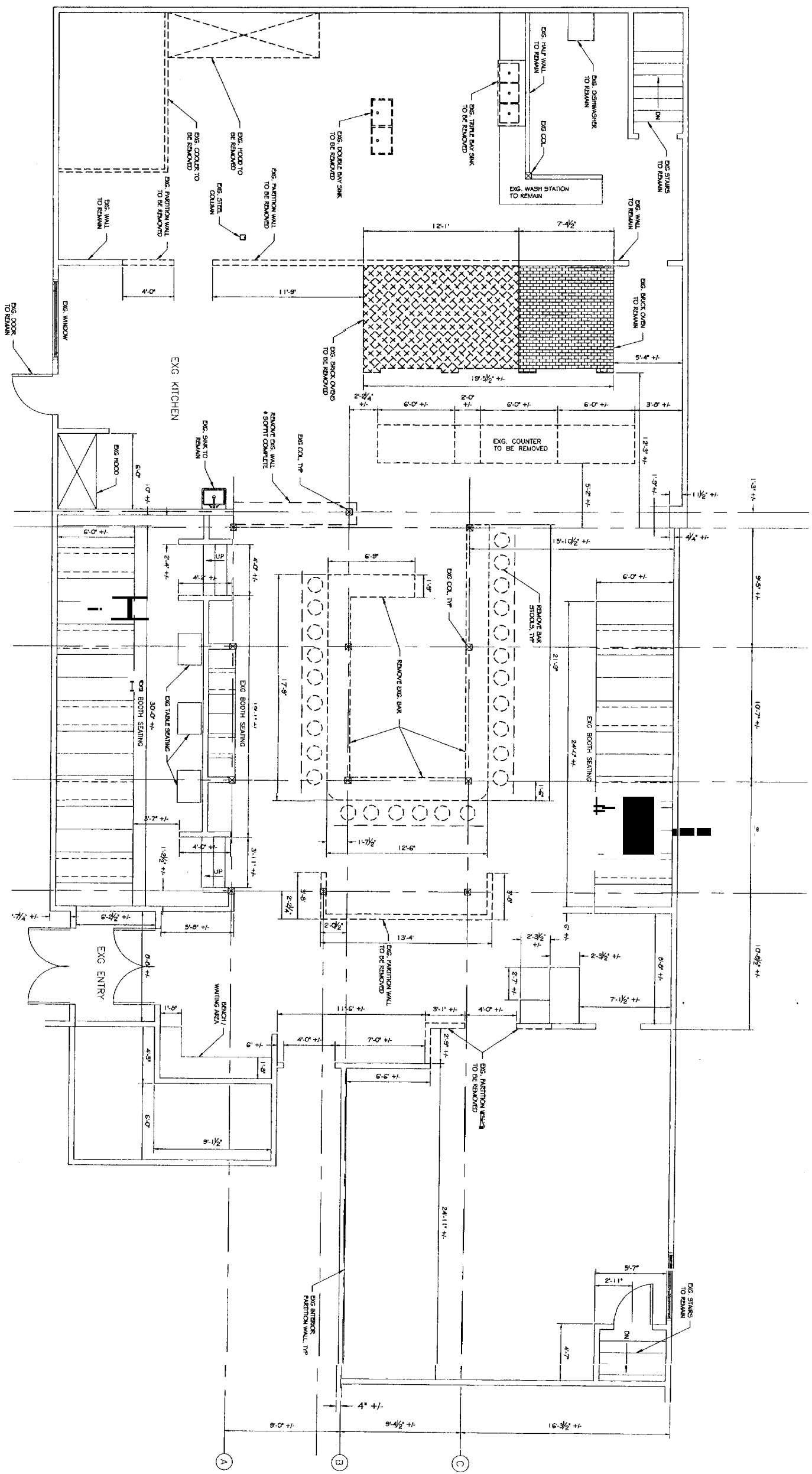
No.	BY	DESCRIPTION	DATE

PROJECT: **865 FOREST AVE.**
PORTLAND, MAINE
 FOR: GRANT WILSON
 SHEET TITLE:
PROPOSED FLOOR PLAN
ISSUED FOR PERMITTING

THIS DRAWING, DESIGN AND
 CONSTRUCTION SHALL BE THE PROPERTY
 OF ASSOCIATED DESIGN PARTNERS
 INC. AND SHALL BE KEPT IN CONFIDENTIAL
 AND PROPRIETARY. NO PART OF THIS
 DRAWING IS TO BE REPRODUCED OR
 TRANSMITTED IN ANY FORM OR BY
 ANY MEANS, ELECTRONIC OR MECHANICAL,
 INCLUDING PHOTOCOPYING, RECORDING,
 OR BY ANY INFORMATION STORAGE
 AND RETRIEVAL SYSTEM, WITHOUT
 THE WRITTEN PERMISSION OF ASSOCIATED
 DESIGN PARTNERS INC.

**ASSOCIATED DESIGN
 PARTNERS INC.**
 80 Leighton Road
 Falmouth, Maine 04105
 Office: (207) 878-1751
 Fax: (207) 878-1788
 E-Mail: adp@adpengineering.com





DATE : 07-11-08
 SCALE : 1/4" = 1'-0"
 DESIGN BY: ASW
 DRAWN BY: RSG
 FILE # 06183-010.DWG
 PROJECT NUMBER
06183
 SHEET NO.
D101

REVISIONS		
No.	BY	DESCRIPTION

865 FOREST AVE.
 PORTLAND, MAINE
 FOR GRANT WILSON

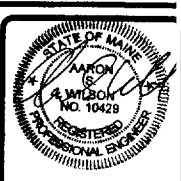
SHEET TITLE:
DEMO PLAN
ISSUED FOR PERMITTING

THIS DOCUMENT IS THE PROPERTY OF ASSOCIATED DESIGN PARTNERS, INC. IT IS TO BE USED ONLY FOR THE PROJECT AND SITE SPECIFICALLY IDENTIFIED HEREIN. ANY OTHER USE OF THIS DOCUMENT WITHOUT WRITTEN CONSENT IS PROHIBITED.

ASSOCIATED DESIGN PARTNERS INC.

80 Leighton Road
 Falmouth, Maine 04105

Office: (207) 878-1751
 Fax: (207) 878-1788
 E-Mail: adp@cdpengineering.com





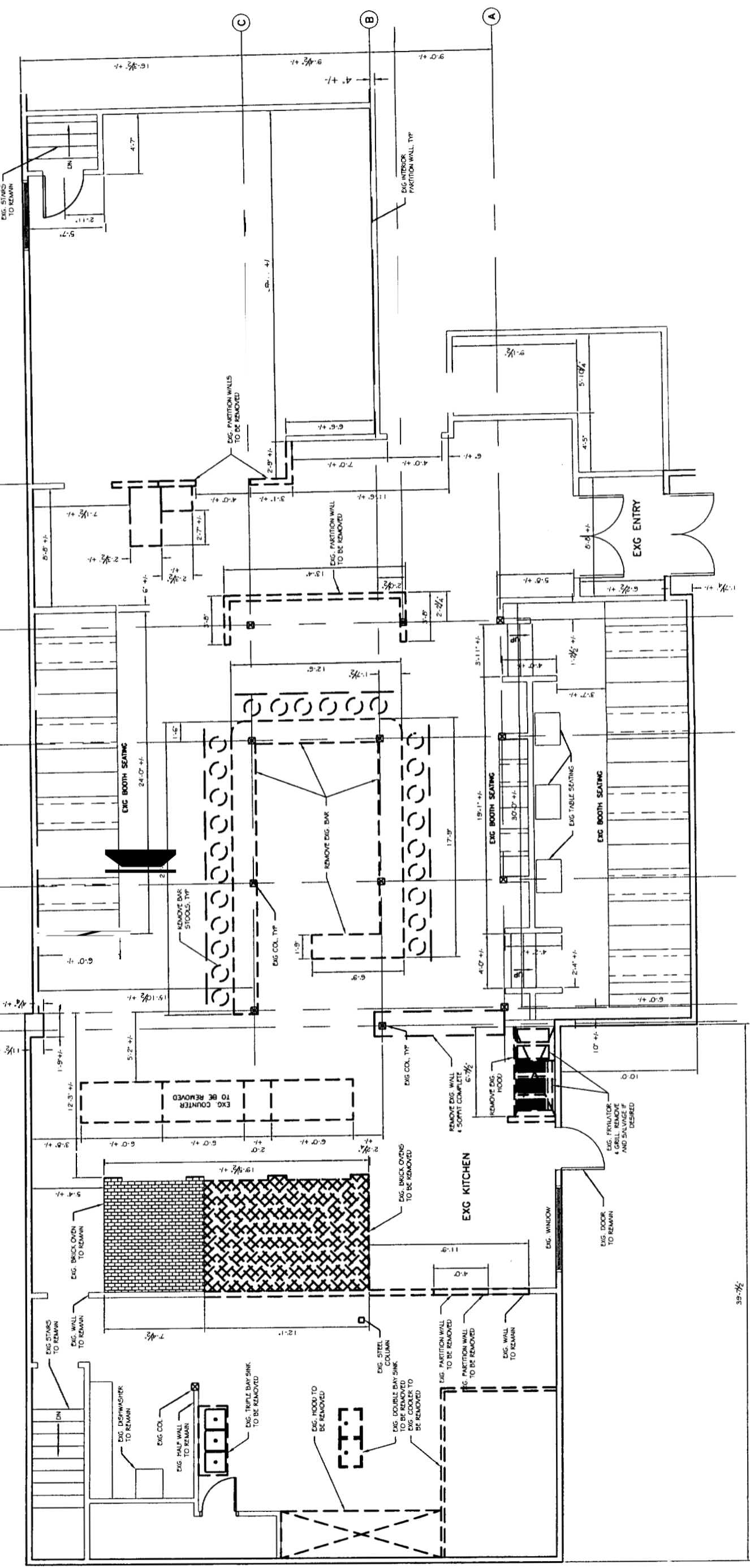
ASSOCIATED DESIGN PARTNERS INC.
 80 Leighton Road 04105
 Portland, Maine
 Office: (207) 878-1751
 Fax: (207) 878-1788
 E-Mail: adp@depengineering.com

**PROJECT: 865 FOREST AVE
 PORTLAND, MAINE
 FOR GRANT WILSON**
**DEMOLITION PLAN
 ISSUED FOR PERMITTING**

NO.	BY	DESCRIPTION	DATE

DATE: 08-11-06
 SCALE: AS NOTED
 DESIGN BY: ASW
 DRAWN BY: RSC
 PROJECT NUMBER:
06183
 SHEET NO:
D101

THIS PLAN IS THE PROPERTY OF ASSOCIATED DESIGN PARTNERS INC. IT IS TO BE USED ONLY FOR THE PROJECT AND SITE SPECIFICALLY IDENTIFIED HEREON. IT IS NOT TO BE REPRODUCED, COPIED, OR TRANSMITTED IN ANY FORM OR BY ANY MEANS, ELECTRONIC OR MECHANICAL, WITHOUT THE WRITTEN PERMISSION OF ASSOCIATED DESIGN PARTNERS INC.



RECEIVED
 AUG 11 2006
 DEPT. OF BUILDING INSPECTION
 CITY OF PORTLAND, ME

137-C-11
 061058



ASSOCIATED DESIGN PARTNERS INC.
 80 Leighton Road
 Falmouth, Maine 04105
 Office: (207) 878-1781
 Fax: (207) 878-1788
 E-Mail: adp@adpengineering.com

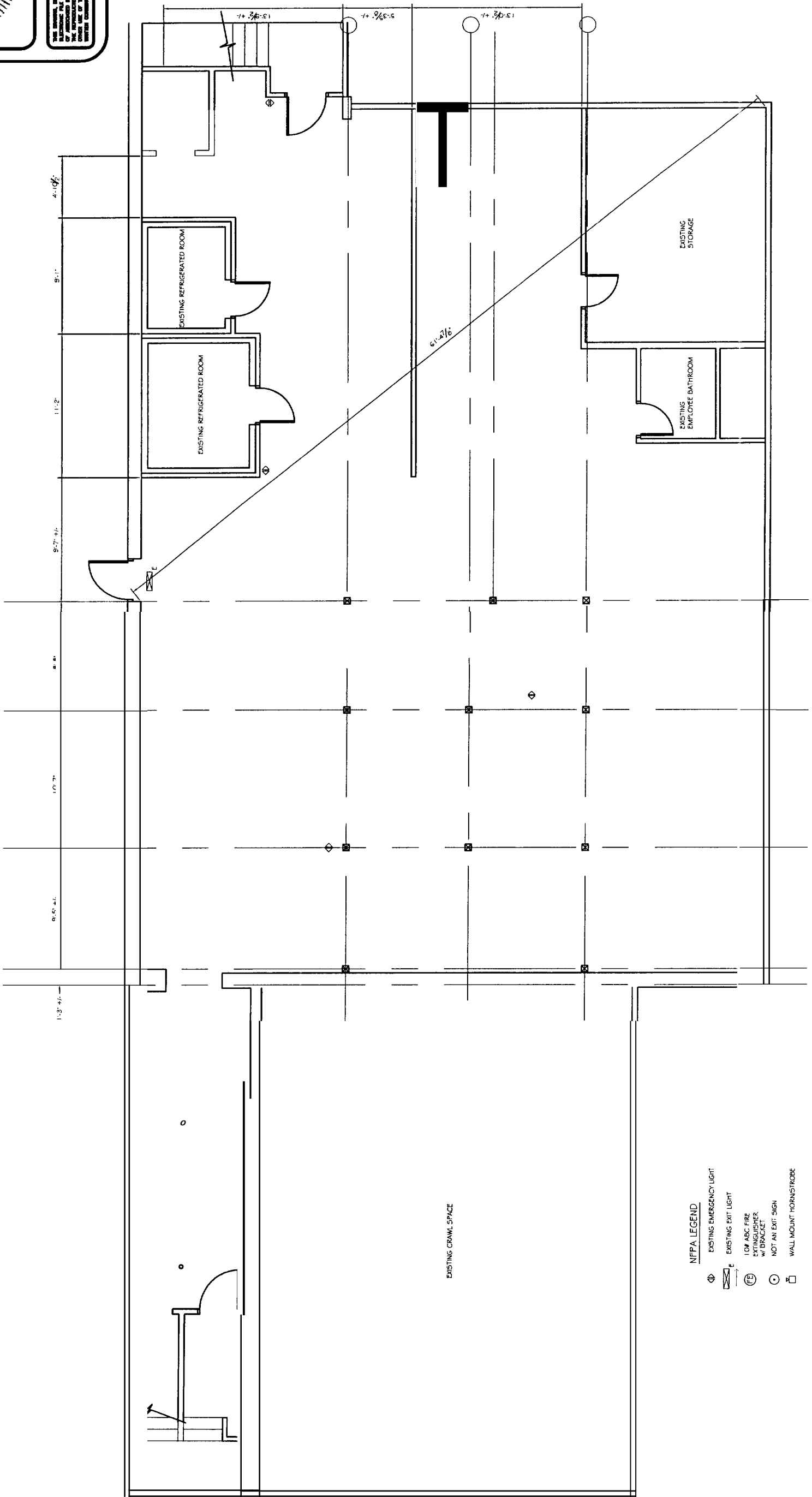
THIS DRAWING, SPECIFICATIONS AND ALL INFORMATION HEREON ARE THE PROPERTY OF ASSOCIATED DESIGN PARTNERS INC. NO REPRODUCTION, EITHER IN WHOLE OR IN PART, WITHOUT WRITTEN PERMISSION IS FORWARDED.

**PROJECT: 865 FOREST AVE.
 PORTLAND, MAINE
 FOR: ERIK RICHARDSON**

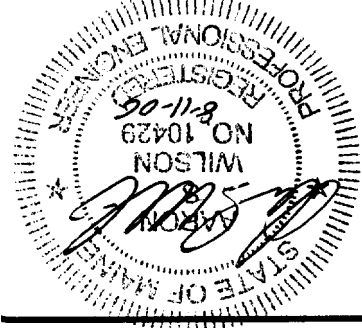
**SHEET TITLE:
 BASEMENT PLAN
 ISSUED FOR PERMITTING**

No.	BY	DESCRIPTION	DATE

DATE: 08-11-08
 SCALE: NOT TO SCALE
 DESIGN BY: ASW
 DRAWN BY: RSC
 FILE #: 08183-A1010W
 PROJECT NUMBER: **06183**
 SHEET NO: **A100**



- NIFPA LEGEND**
- EXISTING EMERGENCY LIGHT
 - EXISTING EXIT LIGHT
 - 10W ABC FIRE EXTINGUISHER w/ BRACKET
 - NOT AN EXIT SIGN
 - WALL MOUNT HORN/STROBE



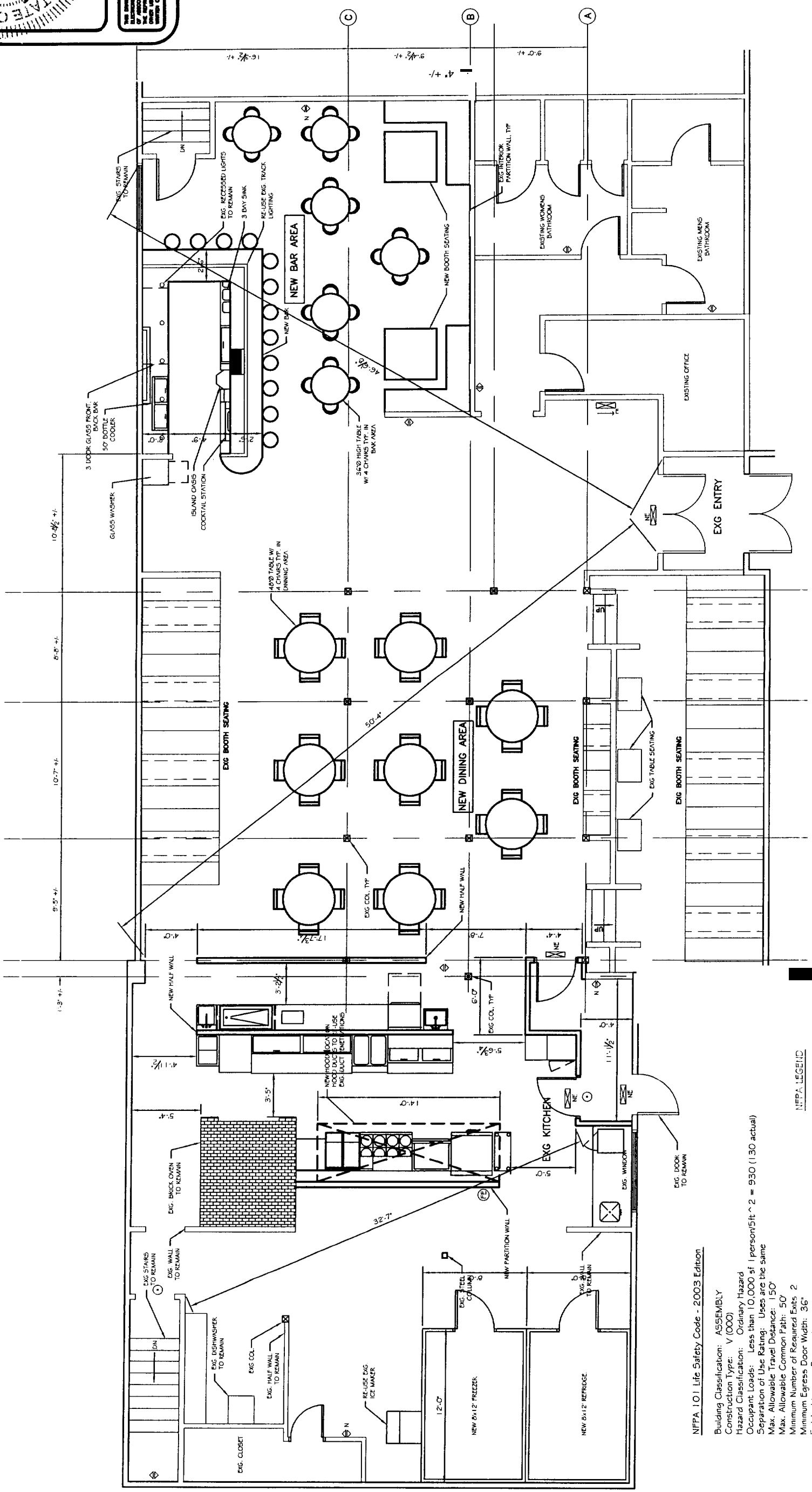
ASSOCIATED DESIGN PARTNERS INC.
 80 Lashburn Road
 Portland, Maine 04105
 Office: (207) 878-1751
 Fax: (207) 878-1788
 E-Mail: adp@adpengineering.com

PROJECT: 865 FOREST AVE.
PORTLAND, MAINE
 FOR: GRANT WILSON
SHEET TITLE: PROPOSED FLOOR PLAN
ISSUED FOR PERMITTING

NO.	BY	DESCRIPTION	DATE

DATE: 08-11-08
 SCALE: NOT TO SCALE
 DESIGN BY: ASW
 DRAWN BY: RSC
 FILE #: 08183-A101LWG
 PROJECT NUMBER: **06183**
 SHEET NO.: **A101**

THIS DRAWING, INCLUDING ALL PROVISIONS, IS THE PROPERTY OF ASSOCIATED DESIGN PARTNERS INC. AND IS TO BE USED ONLY FOR THE PROJECT AND SITE SPECIFICALLY IDENTIFIED HEREIN. CONSENT IS REQUIRED FOR REUSE.



N.F.P.A. LEGEND

⬢	EXISTING EMERGENCY LIGHT
⬢	EXISTING EXIT LIGHT
⊕	NEW LOW AMPS FIRE EXTINGUISHER w/ BRACKET
⊖	NEW NOT AN EXIT SIGN
⊕	NEW EMERGENCY LIGHT
⊖	NEW EXIT LIGHT

NEPA 101 Life Safety Code - 2003 Edition

Building Classification: ASSEMBLY
 Construction Type: V (000)
 Hazard Classification: Ordinary Hazard
 Occupant Loads: Less than 10,000 sf | person/5ft² = 930 (130 actual)
 Separation of Use Ratings: Uses are the same
 Max. Allowable Travel Distance: 150
 Minimum Number of Required Exits: 2
 Minimum Egress Door Width: 36"
 Exit Lighting: Required
 Emergency Lighting: Required
 Smoke Detection System: Required
 Fire Sprinkler System: Not Required
 Emergency Annunciation System: Not Required
 Fire Alarm System: Not Required
 Portable Fire Extinguishers: Required