

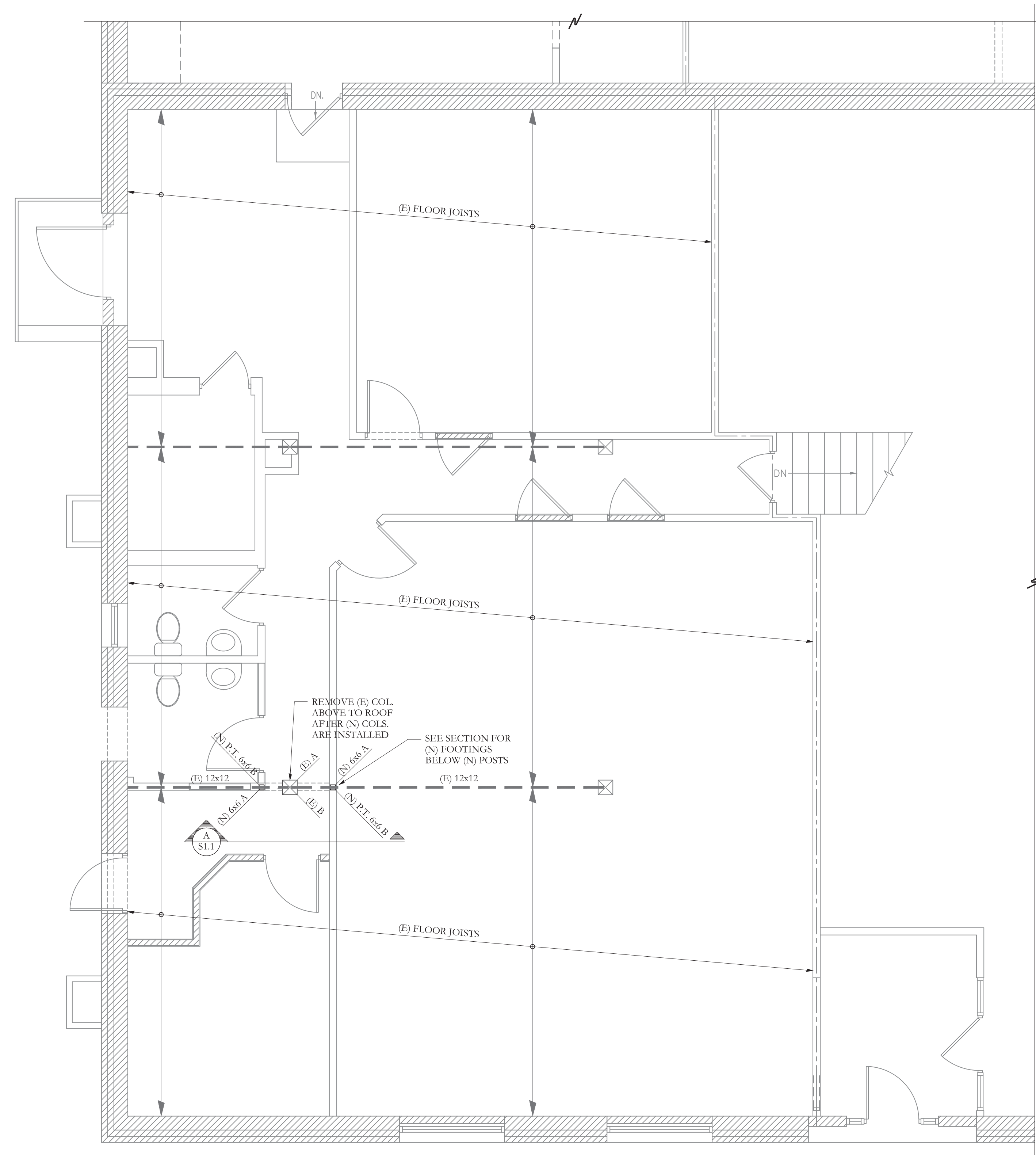
ALPHAarchitects
17 CHESTNUT STREET
PORTLAND, ME 04101
PHONE: 207.761.9500
FAX: 207.761.9595
design@alphaarchitects.com

© COPYRIGHT

Reuse or reproduction of the contents of this document is not permitted without written permission of ALPHA ARCHITECTS

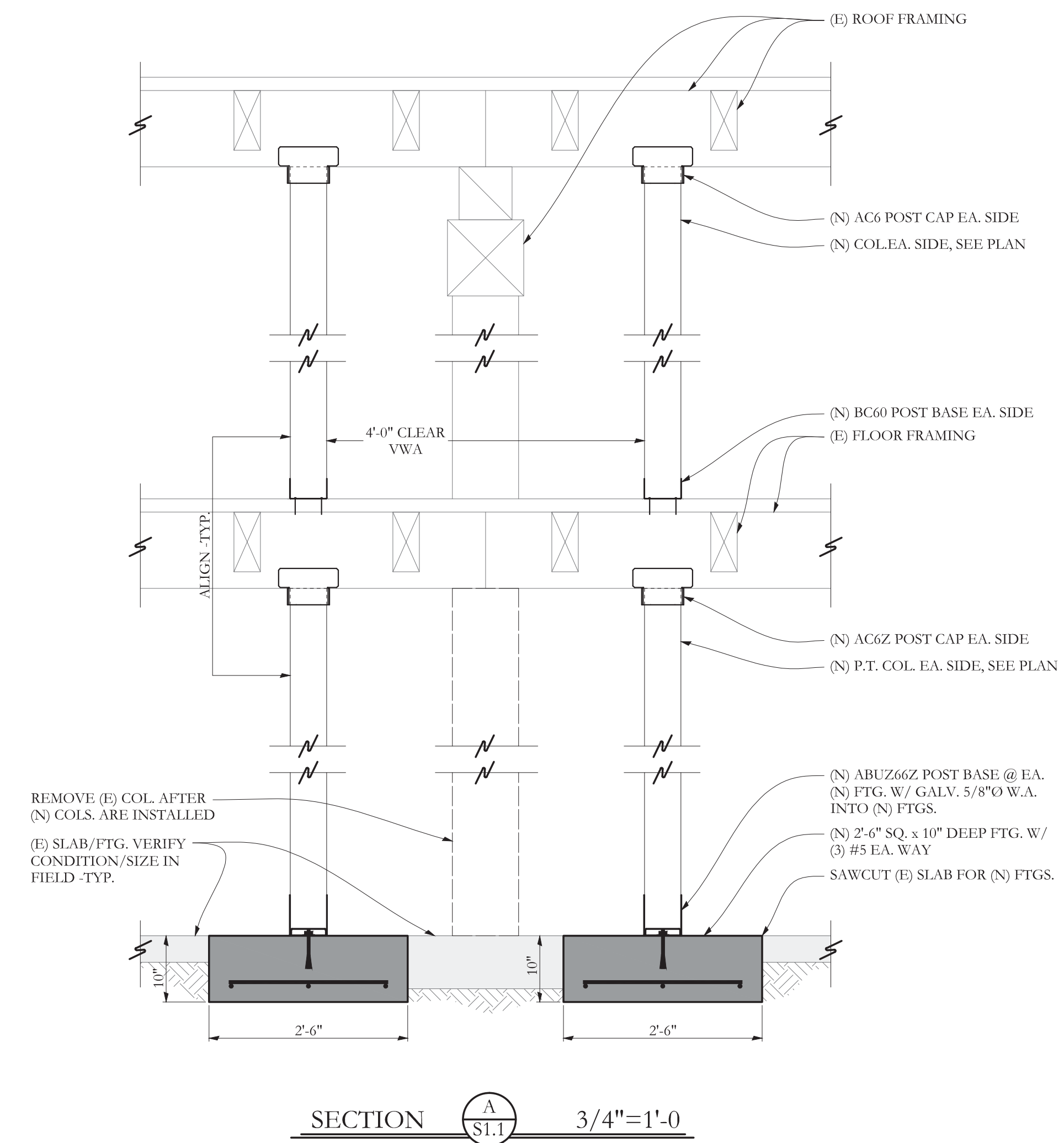
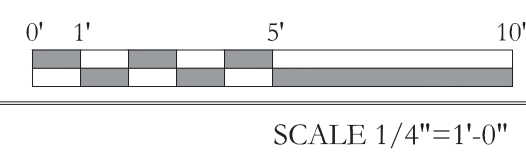
FOR PERMIT

Pam MMMJ
803 Forest Ave. Unit B
Portland, ME. 04102

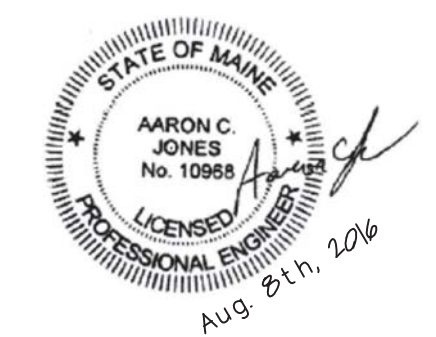


PARTIAL FIRST FLOOR FRAMING PLAN

- NOTES:
1. SEE SHEET S1.0 FOR GENERAL STRUCTURAL NOTES
2. ALL SHORING BY G.C. -TYP.



SECTION A-A
S1.1
3/4"=1'-0"



Structural Integrity
Consulting Engineers, Inc.

SI # 16-0136

77 Oak Street
Portland, ME, 04101
p. 207-774-4614
f. 866-793-7835
www.structuralintg.com

BUILD WITH CONFIDENCE
© 2016 Structural Integrity Consulting Engineers, Inc.

JOB: 16130

ISSUE DATE	
PRELIM	05-11-16
SFMO	-
CD's	-
REV. 1	-
REV. 2	-
PRINT	08-08-16

PARTIAL FRAMING PLAN AND DETAILS

S1.1

08-08-16