

ADDENDUM NO. 1, APRIL 14, 2009

RE: Ocean Avenue Elementary School
Portland, Maine
A/E Comm. No. 3316.10

City of Portland RFP No. 7109
BGS project No. 723

FROM: WBRC Architects-Engineers
141 Preble Street
Portland, Maine 04101
Tel: (207) 828-4511

City of Portland, Purchasing Department
389 Congress Street
Portland, Maine 04101
Tel: (207) 874-8654

TO: Prospective Bidders

This Addendum forms a part of the Contract Documents and modifies the original Bidding Documents dated April 02, 2009, as noted below. Acknowledge receipt of the Addendum in the space provided on the Bid Form. Failure to do so may subject the Bidder to disqualification.

This Addendum consists of the following:

- Specification Changes
- Drawing Changes
- ADD1-CU101-1
- ADD1-AE103-A-1
- ADD1-AE103-B-1 & AE103-B-2
- ADD1-AE103-C-1
- ADD1-AE104-B-1
- ADD1-AE104-C-1
- ADD1-AE201-1
- ADD1-MH101-B-1 & MH101-B-2
- ADD1-MH101-C-1
- ADD1-MP102-B-1
- ADD1-MP102-C-1
- ADD1-EP101-B-1
- ADD1-EY101-A-1
- ADD1-EY101-B-1
- ADD1-E-601-1

SPECIFICATION CHANGES:

1. Section 075423, Thermoplastic Polyolefin (TPO) Roofing:
 - Par. 2.1.A.1, ADD Subpar. c and d as follows:
 - “c. Firestone Building Products, UltraPly TPO.”
 - “d. GAF Materials Corp., EverGuard TPO.”
2. Section 087100, Finish Hardware:
 - Par. 2.06.B.7, DELETE in its entirety and REPLACE with the following: “Cylinders and keys shall be Sargent Signature Series and lettered keyway by Sargent Manufacturing, New Haven, CT.”
 - Par. 2.10.J, Electric Door Opener/Closer, ADD the following “or Gyro Tech GT-500 by Nabco.”

3. Section 101400, Signage, Par. 2.2.B, ADD Item 5 as follows: "5. Size: 24" x 48".
4. Section 102813, Toilet and Bath Accessories, Par. 2.4.C.1, ADD the following: "as distributed by R & M Health Care Inc., Oakville, Canada, 866-664-1983."
5. Section 105126, Plastic Lockers:
 - Par. 2.4.A, DELETE in its entirety and REPLACE with the following: "A. Provide two side panel mounted double coat hooks within every locker in one and two tier lockers."
 - Par. 3.4.B.1, DELETE in its entirety.
6. Section 115213, Projection Screens:
 - Par. 2.1.B, Add Subpar. 2 as follows: "2. Size of Viewing Surface: 84" wide".
 - Par. 2.2.A.4, DELETE in its entirety.
 - Par. 2.2.B, ADD Subpar. 6 as follows: "6. Size of Viewing Surface: 10' x 10'."
 - Par. 2.3.H, DELETE in its entirety.
7. Section 230900, Instrumentation & Control for HVAC, Par. 2.1.B, DELETE in its entirety and REPLACE with the following: "B. The Portland School Department Energy Management System is a TAC/IA new and legacy system. The new Ocean Ave school shall be fully compatible with both of these existing systems. The system software and hardware shall have the capability to network and migrate to the existing facilities through a web browser".

DRAWING CHANGES:

8. 2007 Survey Control Check
 On April 6, 2009, Colonial Surveying Company performed an Elevation Check of the 2007 Survey Control shown on plans CS101 and CP101.

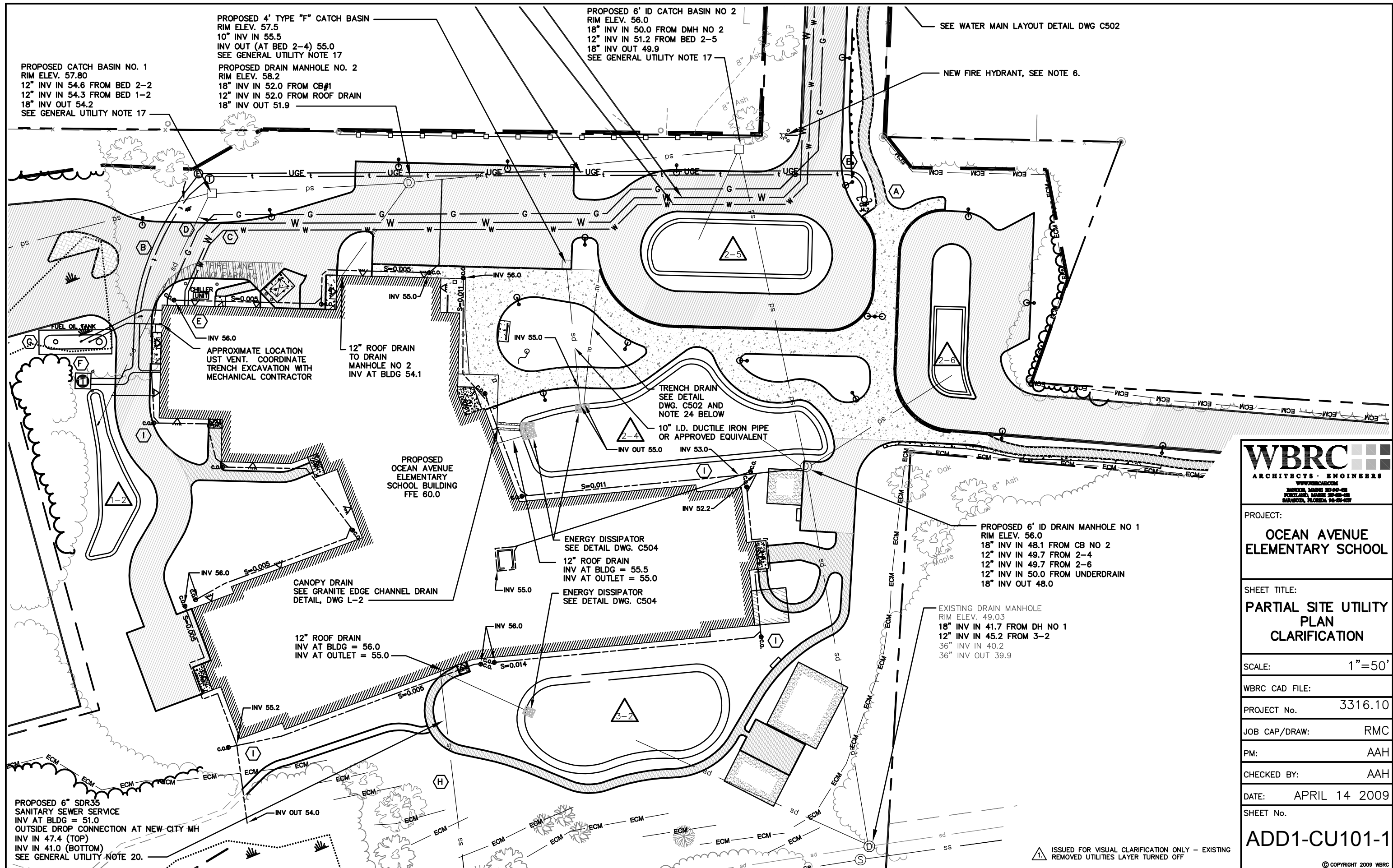
 They observed some movement in the control points set in 2007 and have listed the correct elevations below. They also established a "Project Benchmark" on site. The Benchmark is a Railroad Spike set in the root of a large tree located on the east side of the Walton Street entrance and marks the southwest corner of land now or formerly of Joanne L. Gillies as shown on the Boundary Survey Plan, C-100. The elevation for the Project Benchmark is 57.42.

REVISED ELEVATIONS FOR SURVEY CONTROL POINTS:

GMON W/DH	47.93 (UNCHANGED)
STA 25	49.65
STA 24	57.06
NEW PROJECT BENCHMARK	57.42
9. Sheet CU101, Site Utility Plan, CLARIFICATION as indicated on Sketch ADD1-CU101-1.
10. Sheet C504, Site Details, CLARIFICATION, Street Sign Details, for changeable signage letters, provide slide in letter set containing 250 characters.
11. Sheet S-001, Structural General Notes, ADD the following Note No. 22: "22. Cranked indicates beam to be fabricated to match ridge or valley of adjacent framing to maintain roof slope for drainage. Shop weld for full moment and shear capacity of the section."

12. Sheet S-102-A, S-102-B, and S-102-C in the “Second Floor, Low Roof, Mech. Mezz. Floor Framing Plan Notes,” in Note #4 REVISE the length of the #3 hooked bars from 2’-0” to 3’-0” long.
13. Sheet S-301, Typical Concrete Details, Detail A1, “Typical Reinf. At Slab Edges”, REVISE the length of the #3 hooked bars from 2’-0” to 3’-0” long.
14. Sheet AE103-A, First Floor Reflected Ceiling Plan Seg. A, REVISE portions as indicated on Sketch ADD1-AE103-A-1.
15. Sheet AE103-B, First Floor Reflected Ceiling Plan Seg. B, REVISE portions as indicated on Sketch ADD1-AE103-B-1 & AE103-B-2.
16. Sheet AE103-C, First Floor Reflected Ceiling Plan Seg. C, REVISE portions as indicated on Sketch ADD1-AE103-C-1.
17. Sheet AE104-B, Second Floor Reflected Ceiling Plan Seg. B, REVISE portions as indicated on Sketch ADD1-AE104-B-1.
18. Sheet AE104-C, Second Floor Reflected Ceiling Plan Seg. C, REVISE portions as indicated on Sketch ADD1-AE104-C-1.
19. Sheet AE201, Exterior Elevations, REVISE portions as indicated on Sketch ADD1-AE201-1.
20. Sheet MH101-B, First Floor Mechanical Ductwork Plan – Seg. B, REVISE portions as indicated on Sketch ADD1-MH101-B-1 & MH101-B-2.
21. Sheet MH101-C, First Floor Mechanical Ductwork Plan – Seg. C, REVISE portions as indicated on Sketch ADD1-MH101-C-1.
22. Sheet MP102-B, Second Floor Mechanical Piping Plan – Seg. B, REVISE portions as indicated on Sketch ADD1-MP102-B-1.
23. Sheet MP102-C, Second Floor Mechanical Piping Plan – Seg. C, REVISE portions as indicated on Sketch ADD1-MP102-C-1.
24. Sheet EP101-B, First Floor Electrical Power Plan – Seg. B, REVISE portions as indicated on Sketch ADD1-EP101-B-1.
25. Sheet EY101-A, First Floor Systems Plan – Seg. A, REVISE portions as indicated on Sketch ADD1-EY101-A-1.
26. Sheet EY101-B, First Floor Systems Plan – Seg. B, REVISE portions as indicated on Sketch ADD1-EY101-B-1.
27. Sheet E-601, Electrical Panel Schedules, REVISE portions as indicated on Sketch ADD1-E-601-1.

END OF ADDENDUM



WBRC
 ARCHITECTS · ENGINEERS
 WWW.WBRC.COM
 MIAMI, FLORIDA 33136-1010
 PORTLAND, OREGON 97208-4000
 MIAMI, FLORIDA 33136-1010

PROJECT:
**OCEAN AVENUE
 ELEMENTARY SCHOOL**

SHEET TITLE:
**PARTIAL SITE UTILITY
 PLAN
 CLARIFICATION**

SCALE: 1"=50'

WBRC CAD FILE:

PROJECT No. 3316.10

JOB CAP/DRAW: RMC

PM: AAH

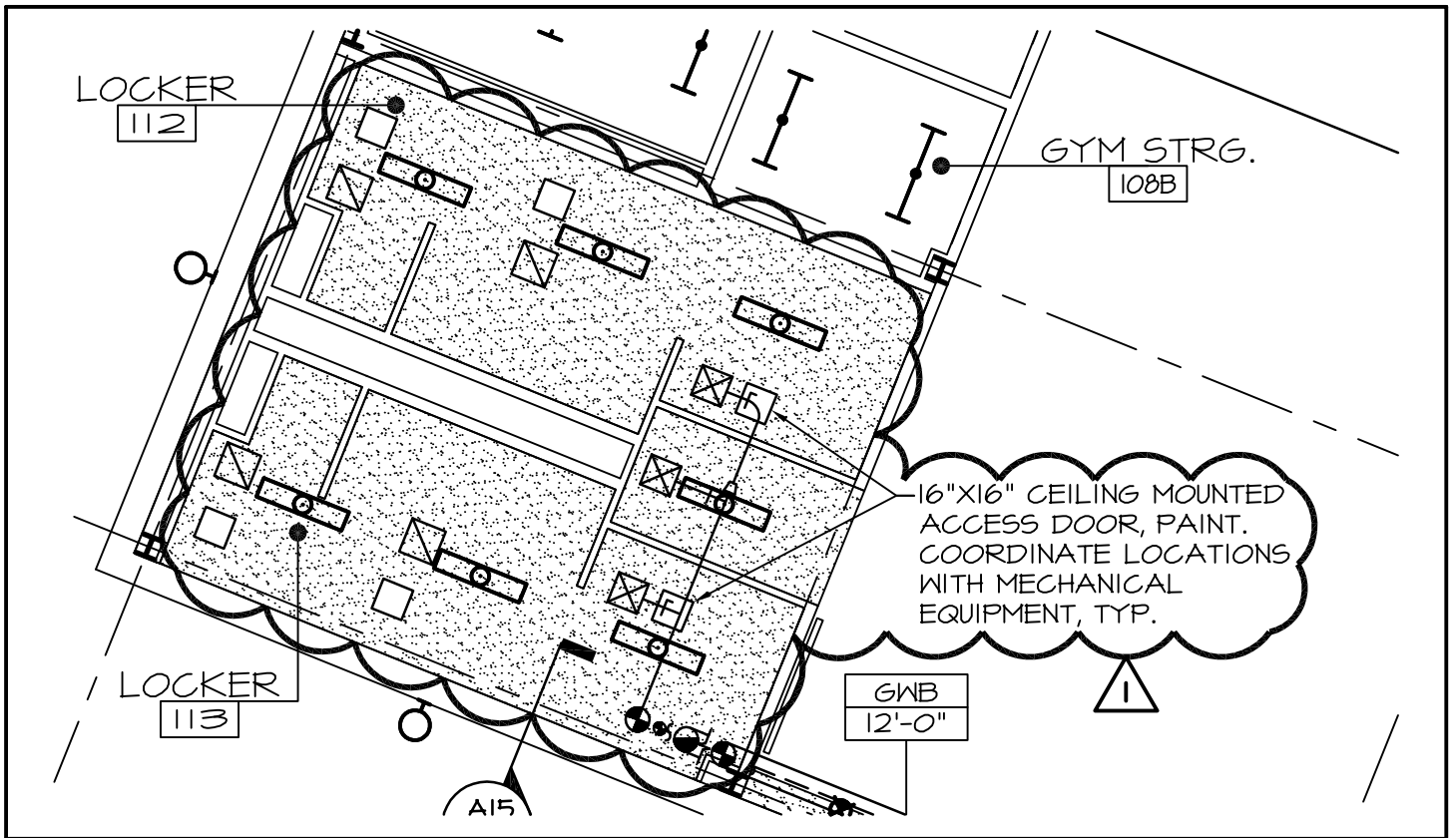
CHECKED BY: AAH

DATE: APRIL 14 2009

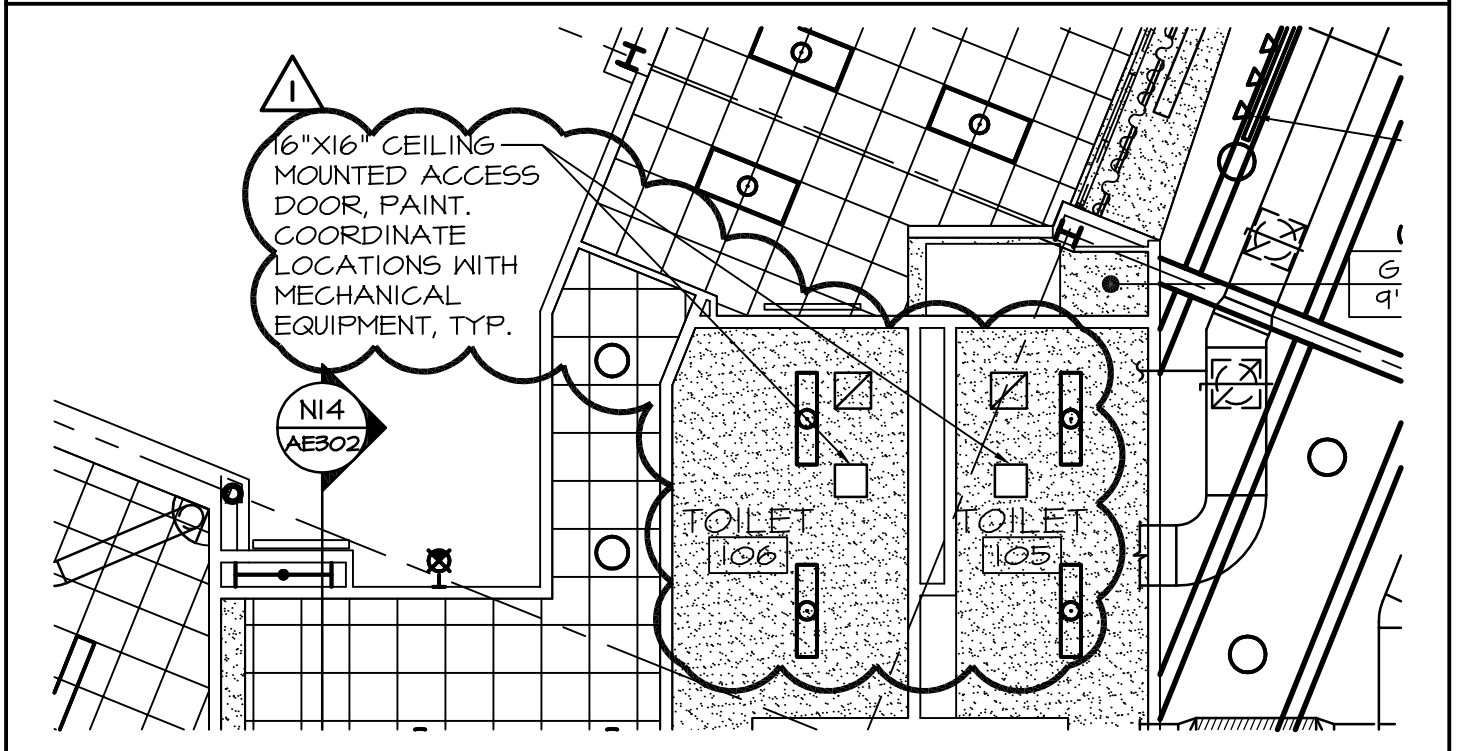
SHEET No.

ADD1-CU101-1

© COPYRIGHT 2009 WBRC



PARTIAL PLAN



PARTIAL PLAN

WBRC
ARCHITECTS · ENGINEERS

BANGOR, MAINE
207-947-4311
PORTLAND, MAINE
207-828-4311
SARASOTA, FLORIDA
941-556-0757
WWW.WBRCAE.COM

SCALE: 1/8" = 1'-0"

WBRC CAD FILE:

PROJECT No. 331610

JOB CAP/DRAW: TRJ

PROJECT:

SCHOOL

PM: MEJ

SHEET No.

ADDENDUM #1

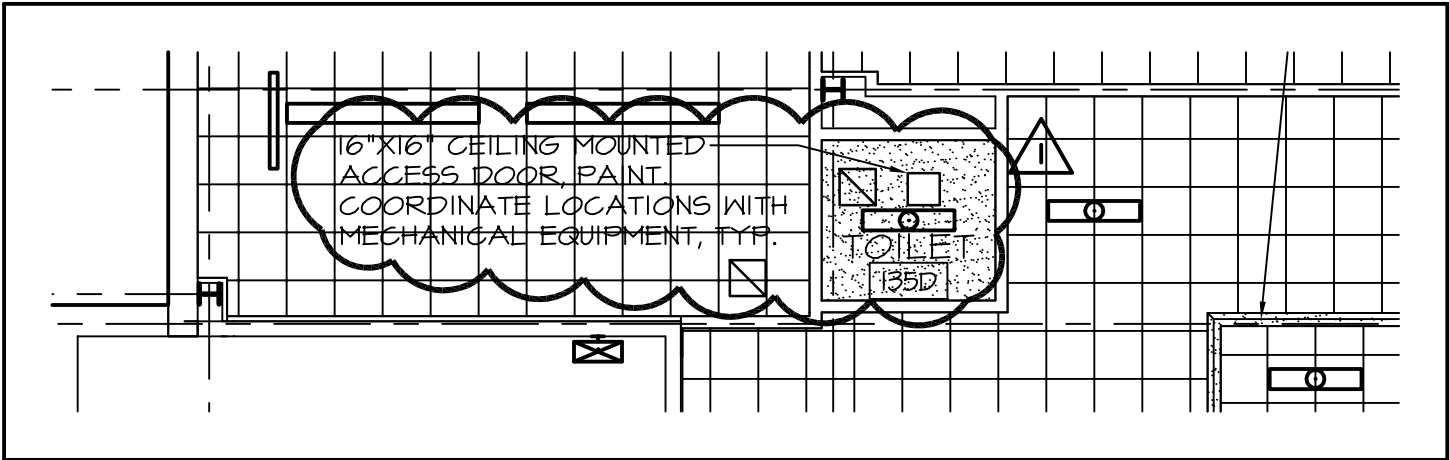
CHECKED BY: MEJ

ADD1-AE103-A-1

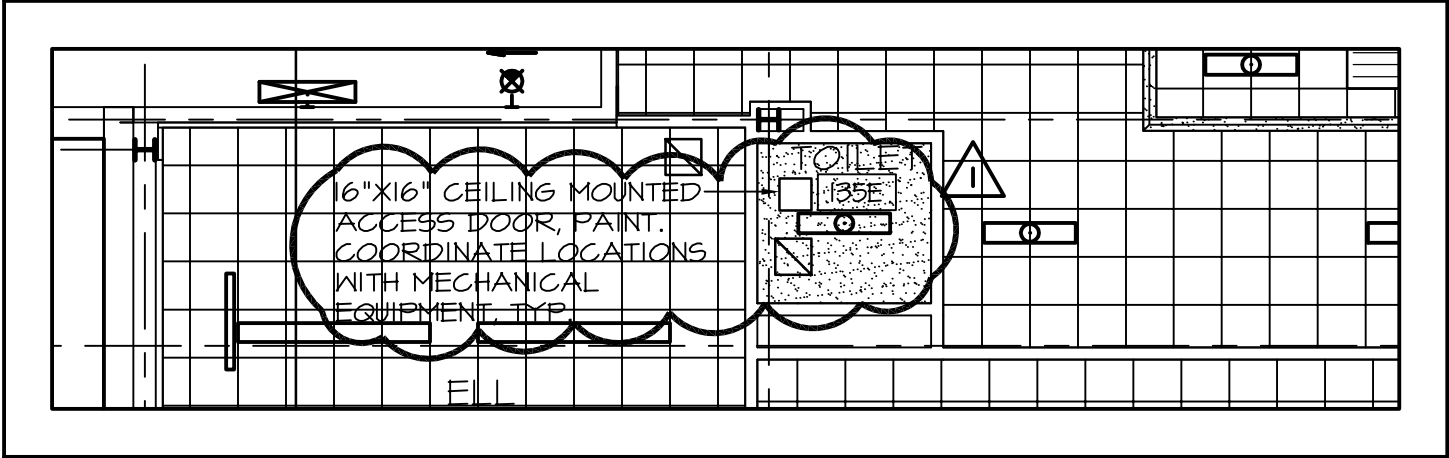
SHEET TITLE: CEILING ACCESS DOORS ADDED

DATE: 04-14-2009

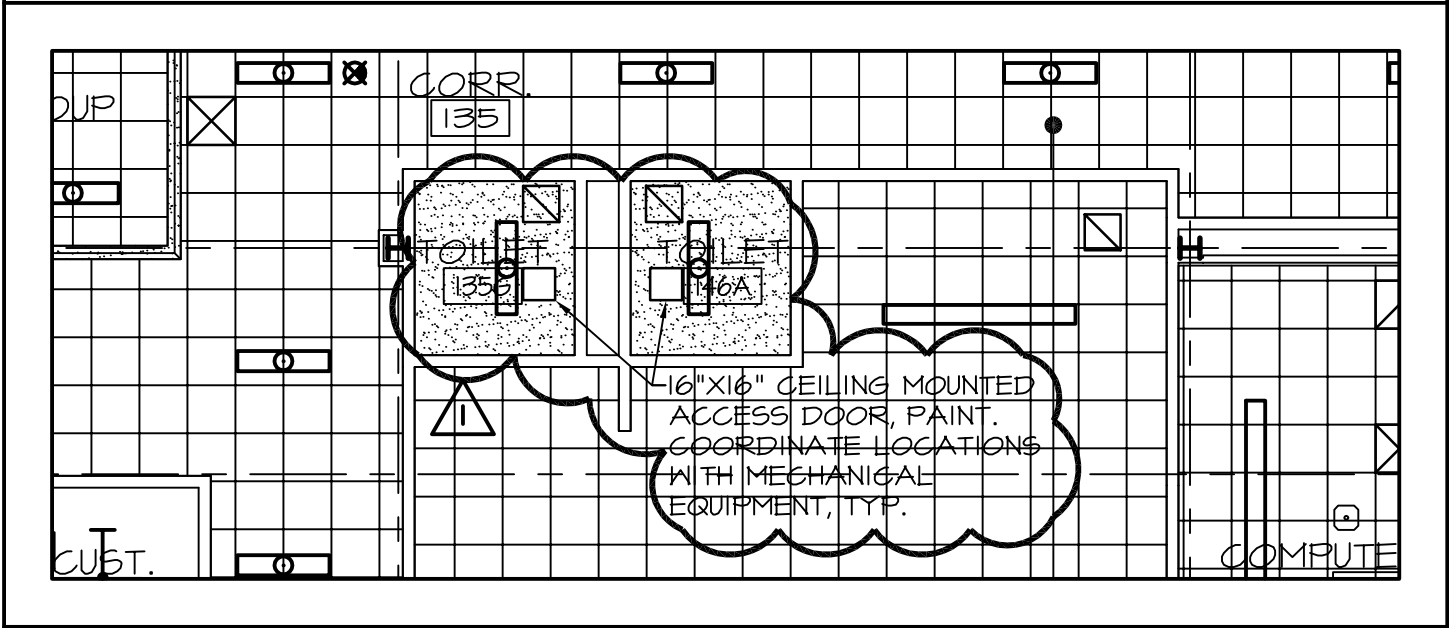
© COPYRIGHT 2009 WBRC



PARTIAL PLAN



PARTIAL PLAN



PARTIAL PLAN

WBRC
ARCHITECTS · ENGINEERS

BANGOR, MAINE
207-947-4311
PORTLAND, MAINE
207-828-4311
SARASOTA, FLORIDA
941-536-0757
WWW.WBRCAE.COM

SCALE: 1/8" = 1'-0"

WBRC CAD FILE:

PROJECT No. 331610

JOB CAP/DRAW: TRJ

PM: MEJ SHEET No.

CHECKED BY: MEJ ADD1-AE103-B-1

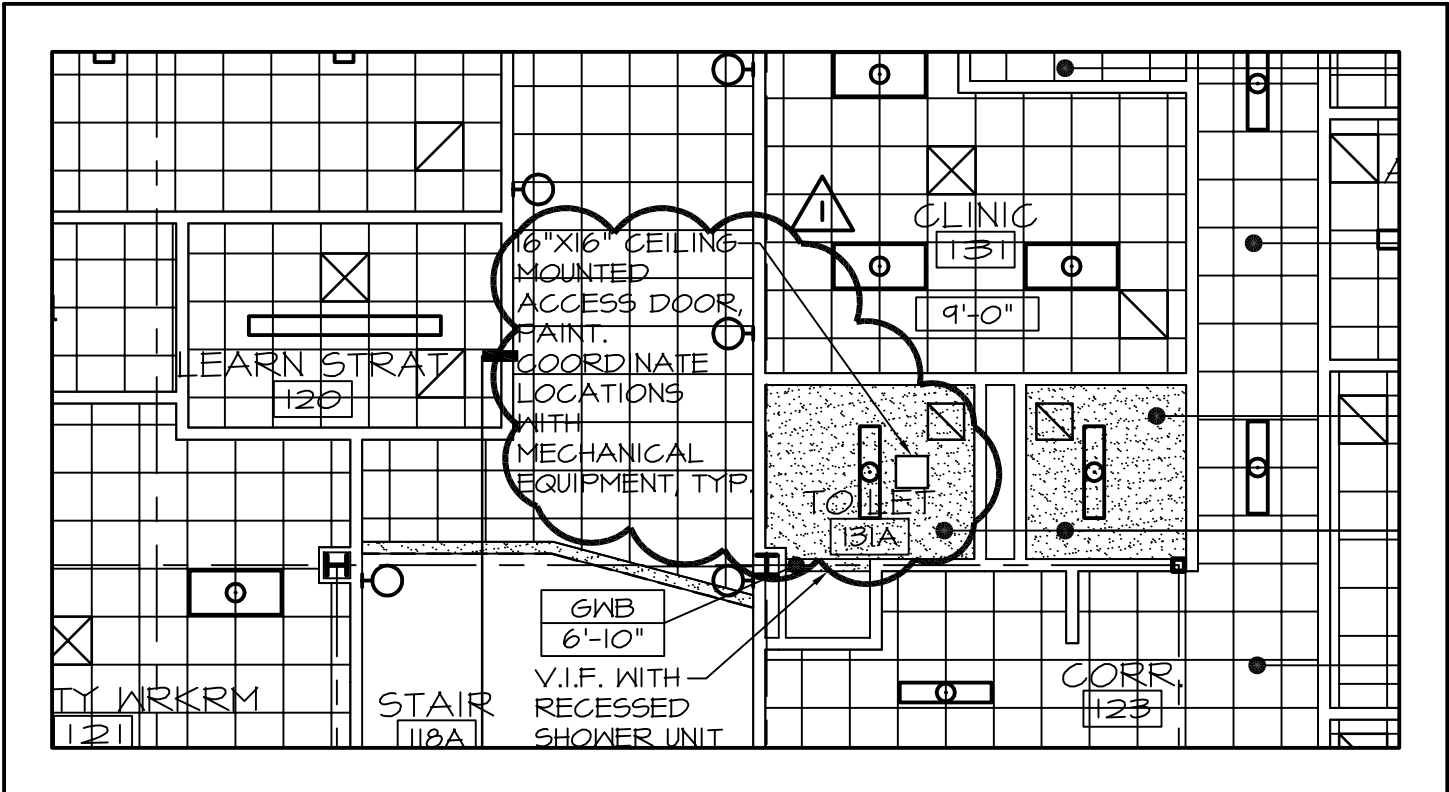
DATE: 04-14-2009 © COPYRIGHT 2007 WBRC

OCEAN AVENUE ELEMENTARY

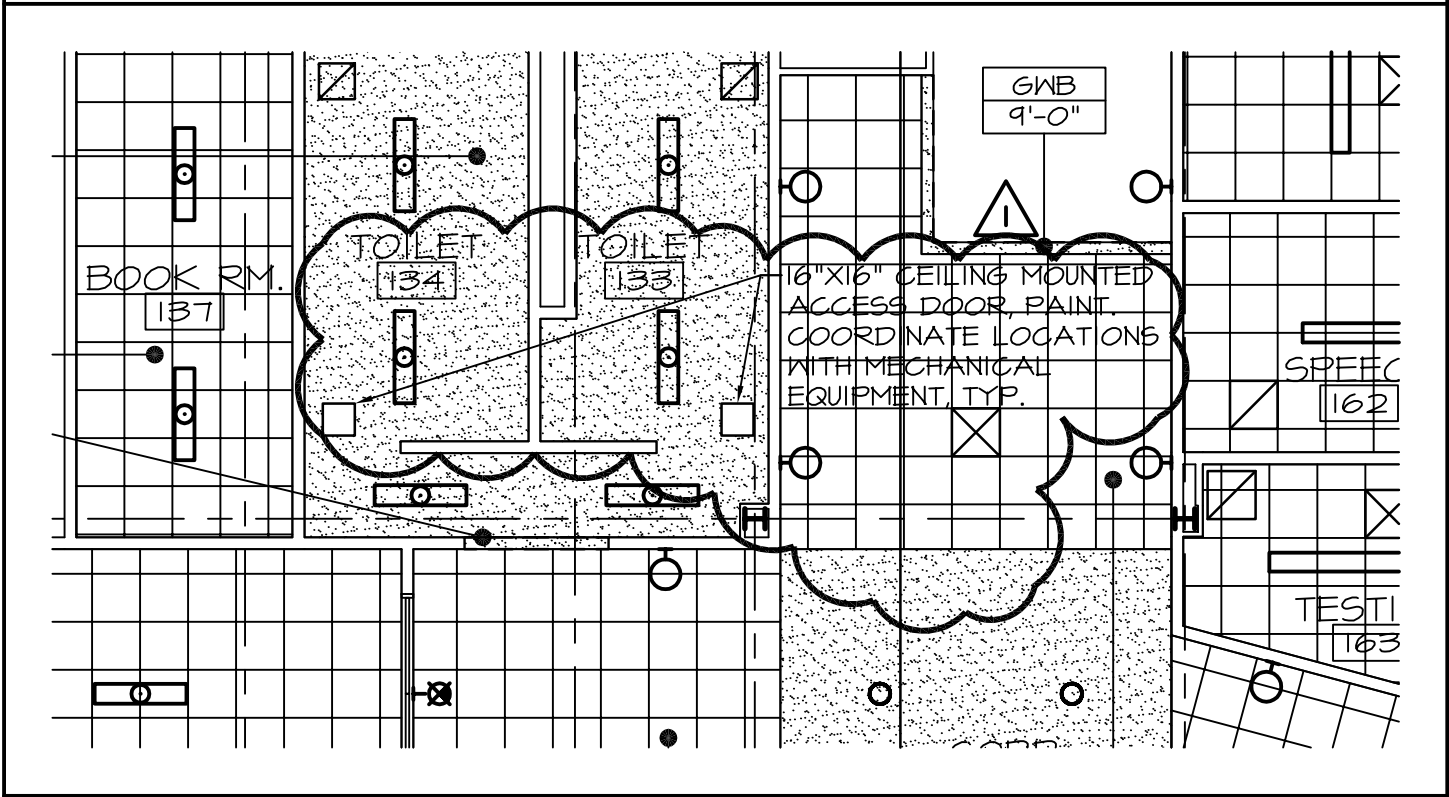
PROJECT: SCHOOL

SHEET TITLE: ADDENDUM #1

CEILING ACCESS DOORS ADDED AND DIFFUSER MOVED



PARTIAL PLAN



PARTIAL PLAN

WBRC
ARCHITECTS · ENGINEERS

BANGOR, MAINE 207-947-4311
PORTLAND, MAINE 207-828-4311
SARASOTA, FLORIDA 941-556-0757
WWW.WBRCAE.COM

SCALE: 1/8" = 1'-0"

WBRC CAD FILE:

PROJECT No. 331610

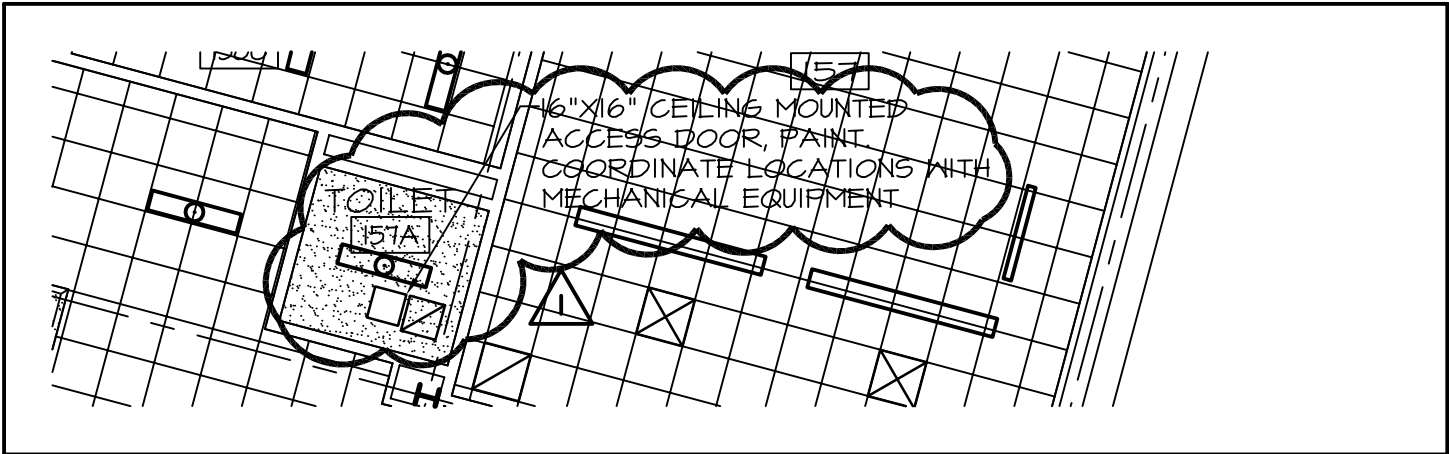
JOB CAP/DRAW: TRJ

PM: MEJ SHEET No.

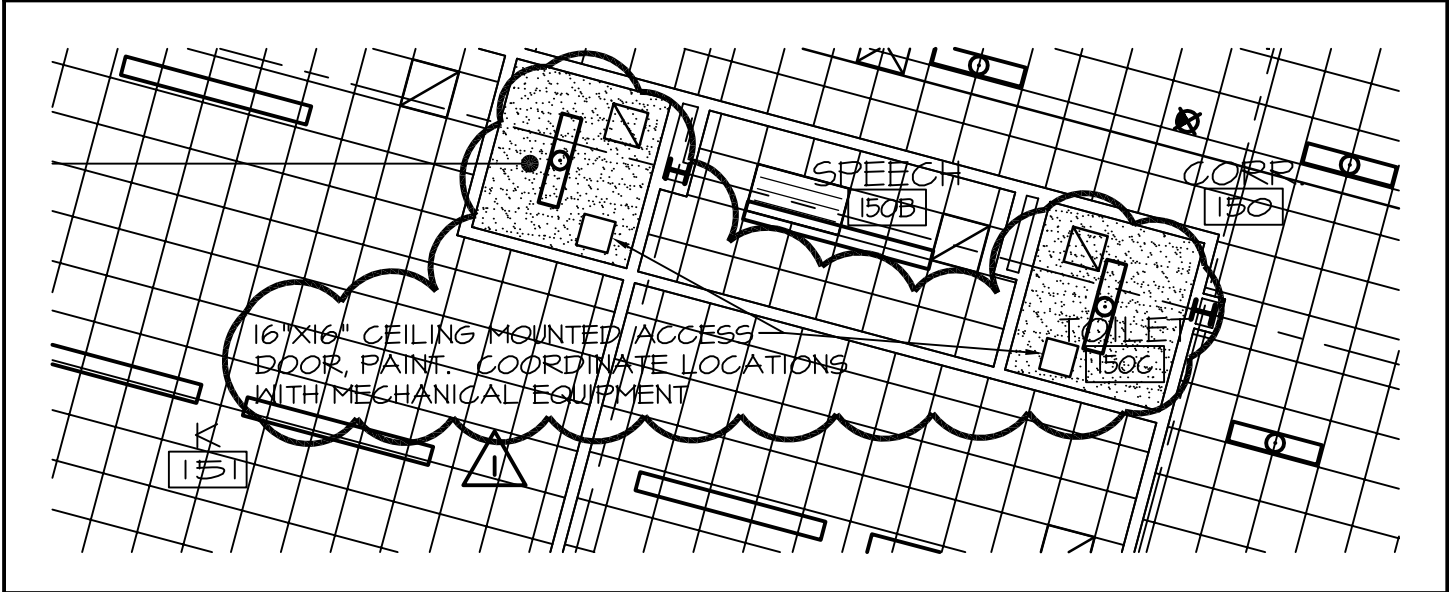
CHECKED BY: MEJ ADD1-AE103-B-2

DATE: 04-14-2009 © COPYRIGHT 2007 WBRC

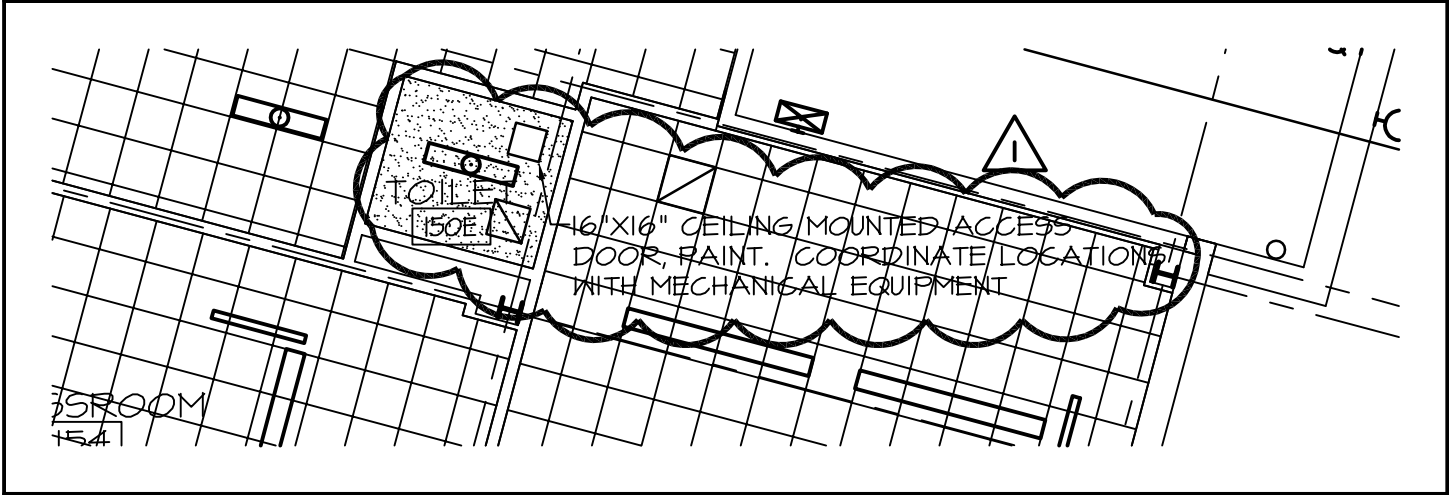
OCEAN AVENUE ELEMENTARY
SCHOOL
PROJECT:
SHEET TITLE: ADDENDUM #1
CEILING ACCESS DOORS ADDED AND DIFFUSER MOVED



PARTIAL PLAN



PARTIAL PLAN



PARTIAL PLAN

WBRC
ARCHITECTS · ENGINEERS

BANGOR, MAINE
207-947-4311
PORTLAND, MAINE
207-828-4311
SARASOTA, FLORIDA
941-556-0757
WWW.WBRCAE.COM

SCALE: 1/8" = 1'-0"

WBRC CAD FILE:

PROJECT No. 331610

JOB CAP/DRAW: TRJ

PM: MEJ SHEET No.

CHECKED BY: MEJ ADD1-AE103-C-1

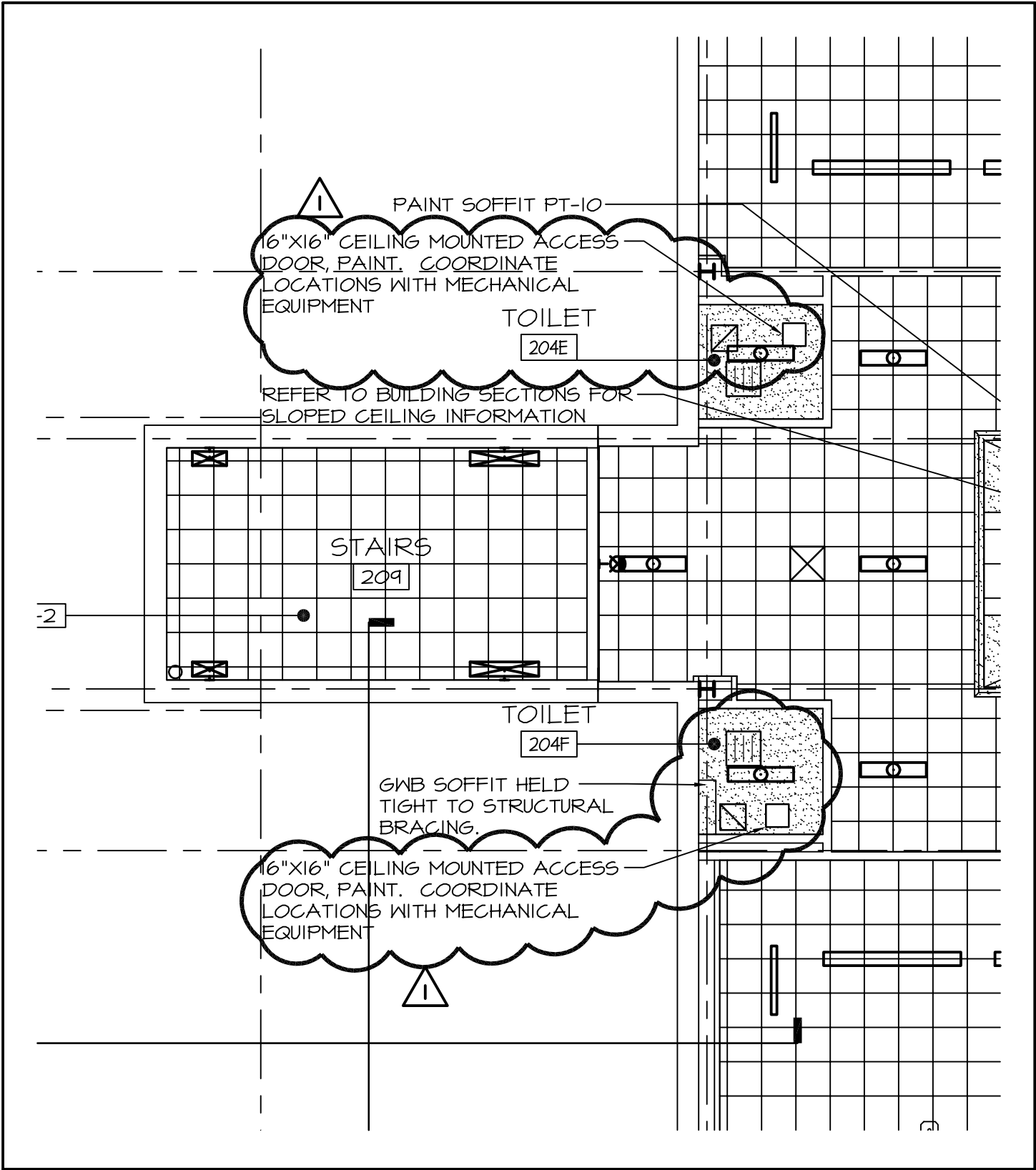
DATE: 04-14-2009 © COPYRIGHT 2007 WBRC

OCEAN AVENUE ELEMENTARY

PROJECT: SCHOOL

ADDENDUM #1

SHEET TITLE: CEILING ACCESS DOORS ADDED



PARTIAL PLAN



BANGOR, MAINE
207-947-4311
PORTLAND, MAINE
207-828-4311
SARASOTA, FLORIDA
941-556-0757
WWW.WBRCAE.COM

SCALE: 1/8" = 1'-0"

WBRC CAD FILE:

PROJECT No. 331610

JOB CAP/DRAW: TRJ

PROJECT:

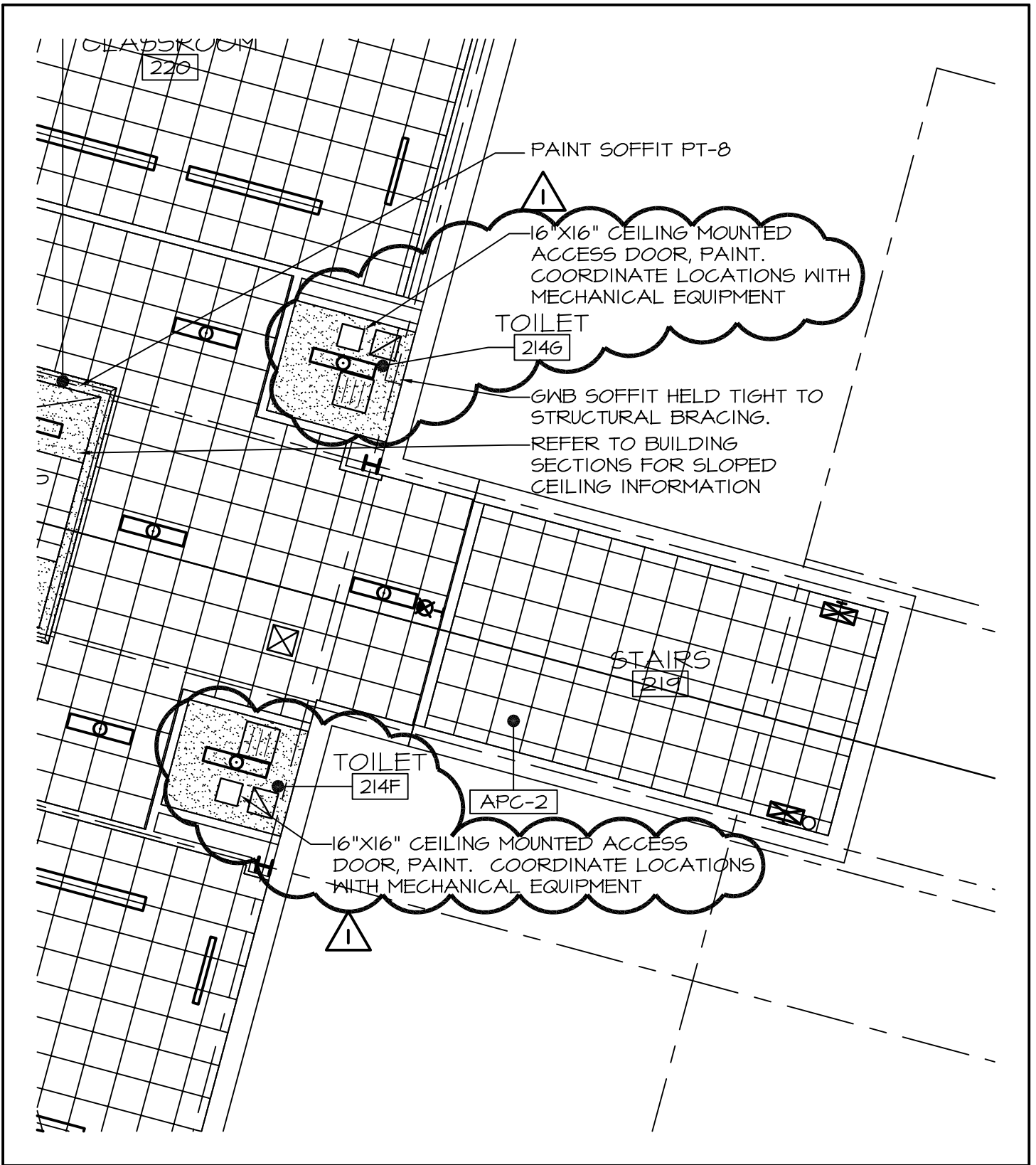
OCEAN AVENUE ELEMENTARY
SCHOOL

PM: MEJ SHEET No.

CHECKED BY: MEJ ADD1-AE104-B-1

SHEET TITLE: CEILING ACCESS DOORS ADDED

DATE: 04-14-2009 © COPYRIGHT 2007 WBRC



PARTIAL PLAN

WBRC
ARCHITECTS · ENGINEERS

BANGOR, MAINE
207-947-4311
PORTLAND, MAINE
207-828-4311
SARASOTA, FLORIDA
941-556-0757
WWW.WBRCAE.COM

SCALE: 1/8" = 1'-0"

WBRC CAD FILE:

PROJECT No. 331610

JOB CAP/DRAW: TRJ

PROJECT:

OCEAN AVENUE ELEMENTARY
SCHOOL

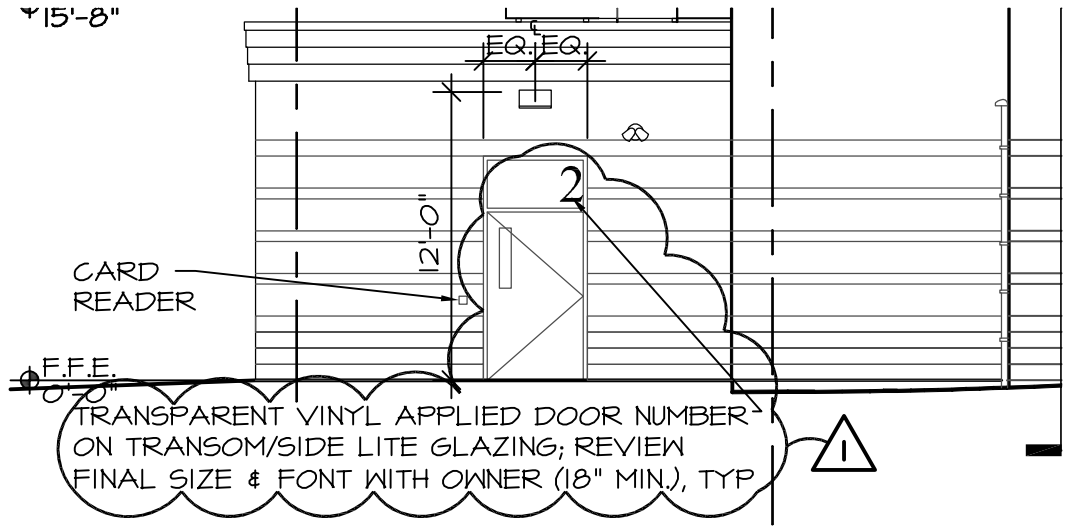
PM: MEJ SHEET No.

CHECKED BY: MEJ ADD1-AE104-C-1

SHEET TITLE: CEILING ACCESS DOORS ADDED

DATE: 04-14-2009 © COPYRIGHT 2007 WBRC

15'-8"



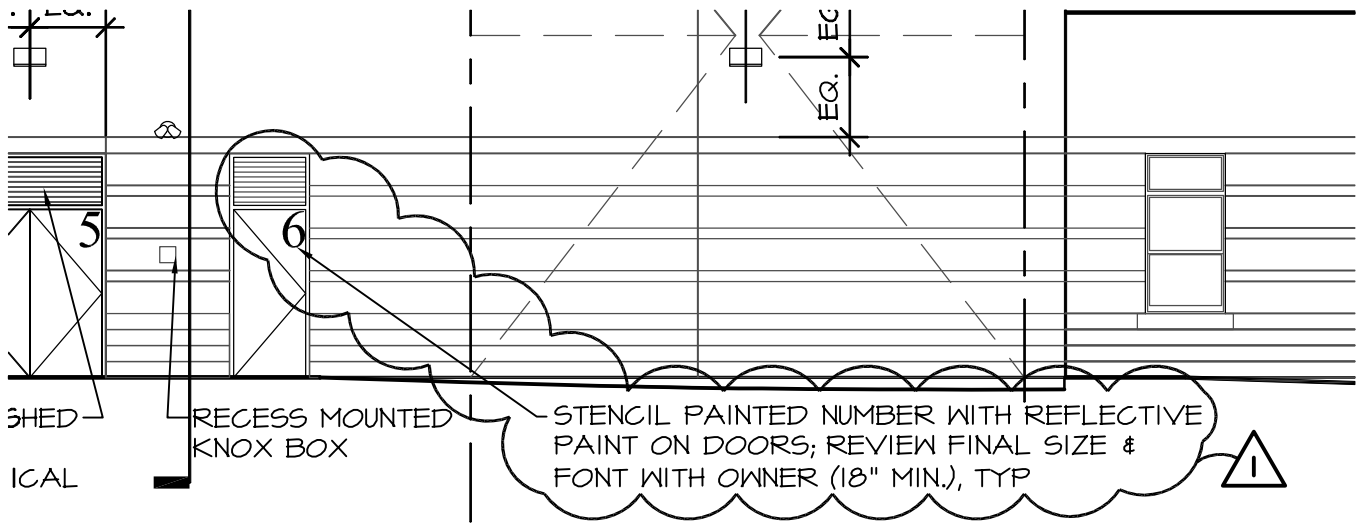
EI

SEGMENT A WEST ELEVATION

1/8" = 1'-0"

AE101-A, AE102-A

(PARTIAL ELEVATION)



EI

SEGMENT A WEST ELEVATION

1/8" = 1'-0"

AE101-A, AE102-A

(PARTIAL ELEVATION)



BANGOR, MAINE
207-947-4311
PORTLAND, MAINE
207-828-4311
SARASOTA, FLORIDA
941-556-0757
WWW.WBRCAE.COM

SCALE: 1/8" = 1'-0"

WBRC CAD FILE: 3316.10

PROJECT No. MEJ

JOB CAP/DRAW: TRJ

PM: MEJ SHEET No.

CHECKED BY: MEJ ADD1-AE201-1

DATE: 04-14-09

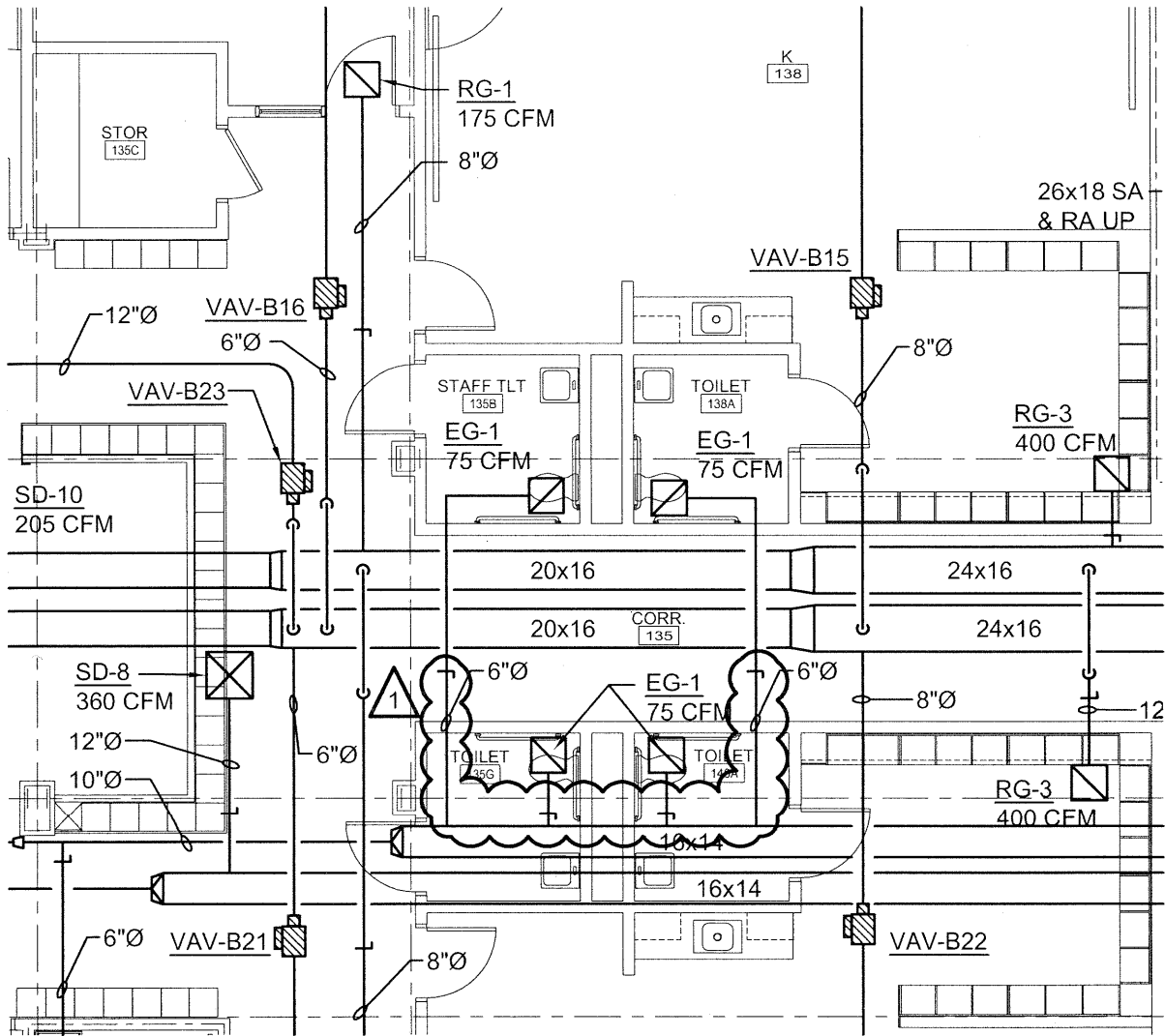
© COPYRIGHT 2009 WBRC

PROJECT:

SCHOOL

SHEET TITLE:

ADDENDUM #1
NOTE REVISION



WBRC
 ARCHITECTS • ENGINEERS

BANGOR, MAINE
 207-947-4511
 PORTLAND, MAINE
 207-828-4511
 SARASOTA, FLORIDA
 941-556-0757
 WWW.WBRCAE.COM

SCALE: 1/8" = 1'-0"

WBRC CAD FILE: 331610-MH101-B

PROJECT No. 3316.10

JOB CAP/DRAW: CGB

PROJECT:

OCEAN AVENUE
 ELEMENTARY SCHOOL

PM: MEJ

SHEET No.

CHECKED BY: DMON

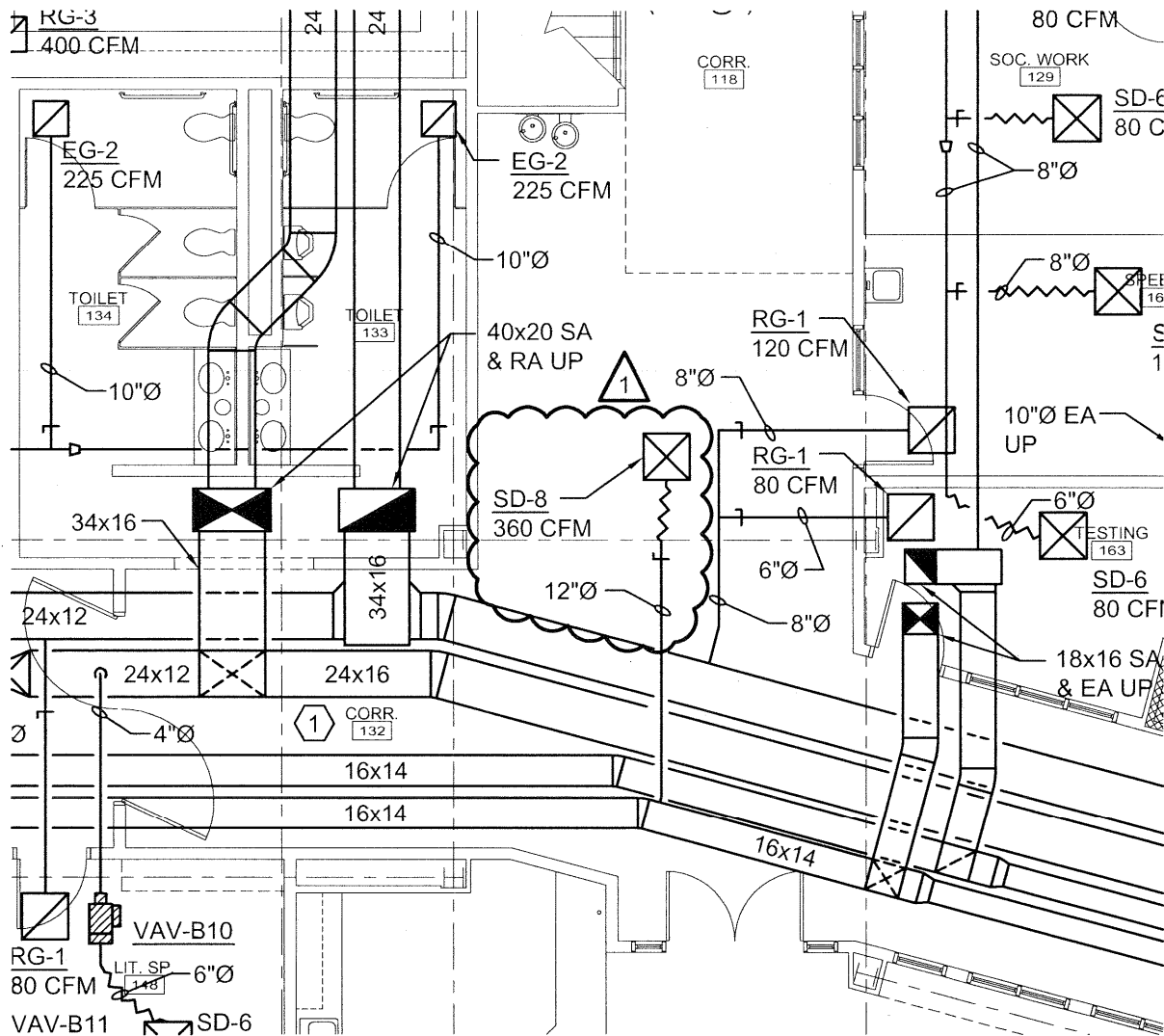
ADD1-MH101-B-1

SHEET TITLE:

TOILET ROOM
 VOLUME DAMPER RELOCATIONS

DATE: 04-14-09

© COPYRIGHT 2007 WBRC



WBRC
ARCHITECTS • ENGINEERS

BANGOR, MAINE
207-947-4311
PORTLAND, MAINE
207-828-4311
SARASOTA, FLORIDA
941-556-0757
WWW.WBRCAE.COM

SCALE: 1/8" = 1'-0"

WBRC CAD FILE: 331610-MH101-B

PROJECT No. 3316.10

JOB CAP/DRAW: CGB

PROJECT:

OCEAN AVENUE
ELEMENTARY SCHOOL

PM: MEJ

SHEET No.

CHECKED BY: DMON

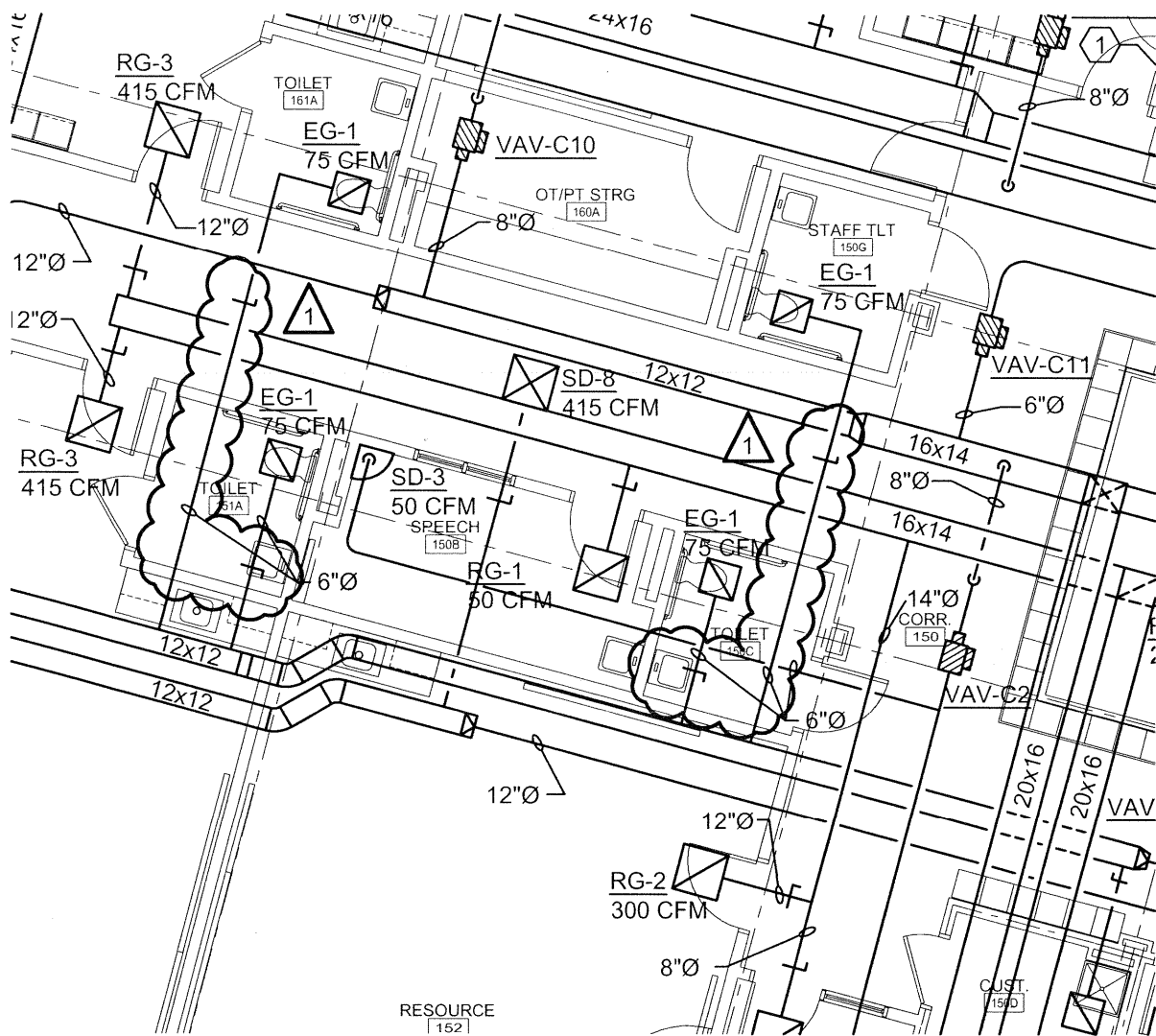
ADD1-MH101-B-2

SHEET TITLE:

CORR. DIFFUSER &
VOLUME DAMPER RELOCATIONS

DATE: 04-14-09

© COPYRIGHT 2007 WBRC



WBRC
 ARCHITECTS • ENGINEERS

BANGOR, MAINE
 207-947-4311
 PORTLAND, MAINE
 207-828-4311
 SARASOTA, FLORIDA
 941-556-0757
 WWW.WBRCCAR.COM

SCALE: 1/8" = 1'-0"

WBRC CAD FILE: 331610-MH101-C

PROJECT No. 3316.10

JOB CAP/DRAW: CGB

PROJECT:

OCEAN AVENUE
 ELEMENTARY SCHOOL

PM: MEJ

SHEET No.

CHECKED BY: DMON

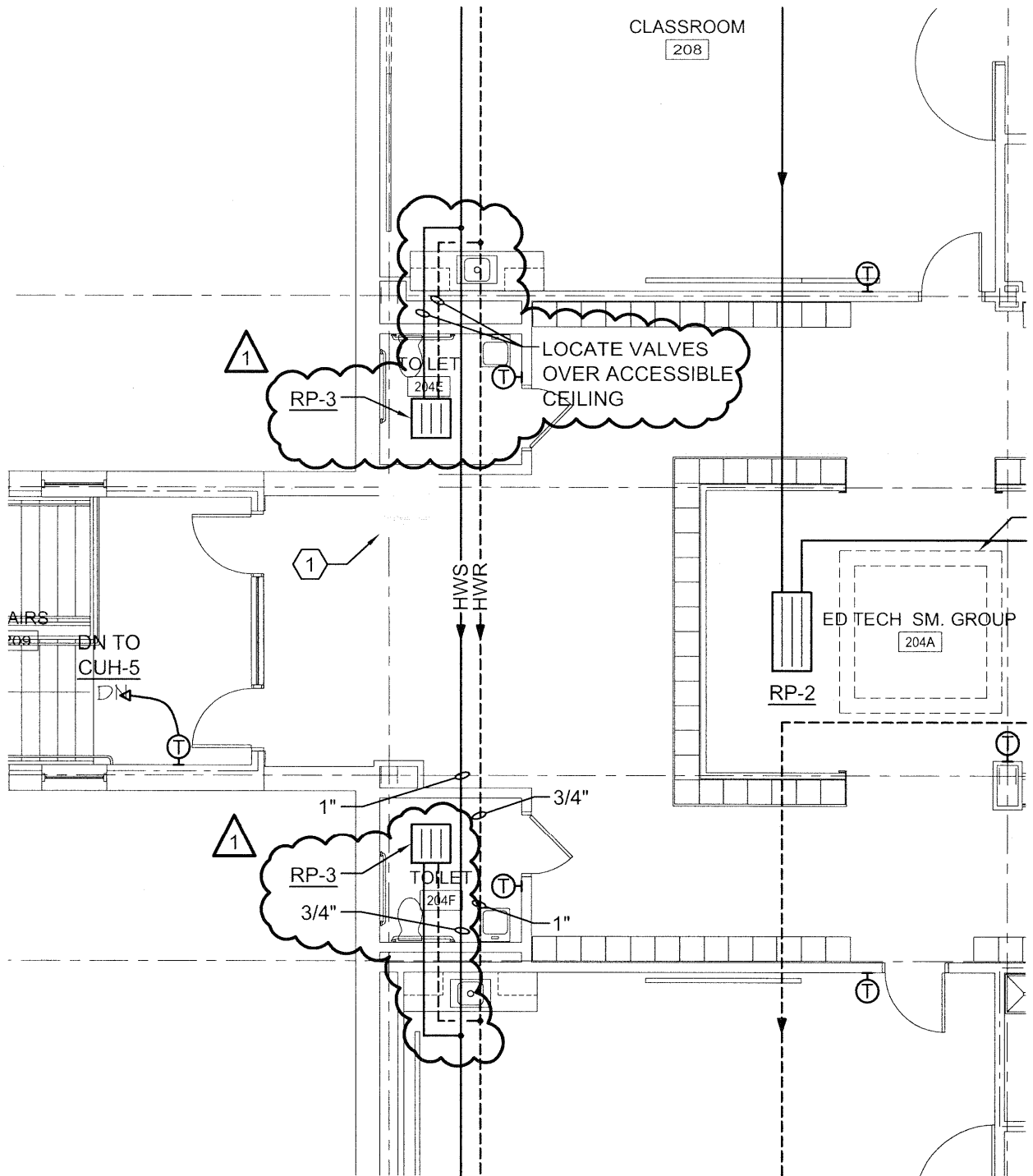
ADD1-MH101-C-1

SHEET TITLE:

TOILET ROOM
 VOLUME DAMPER RELOCATIONS

DATE: 04-14-09

© COPYRIGHT 2007 WBRC



WBRC
 ARCHITECTS • ENGINEERS

BANGOR, MAINE
 207-947-4511
 PORTLAND, MAINE
 207-828-4511
 SARASOTA, FLORIDA
 941-556-0757
 WWW.WBRCAR.COM

SCALE: 1/8" = 1'-0"

WBRC CAD FILE: 331610-MP102-B

PROJECT No. 3316.10

JOB CAP/DRAW: CGB

PROJECT:

OCEAN AVENUE
 ELEMENTARY SCHOOL

PM: MEJ SHEET No.

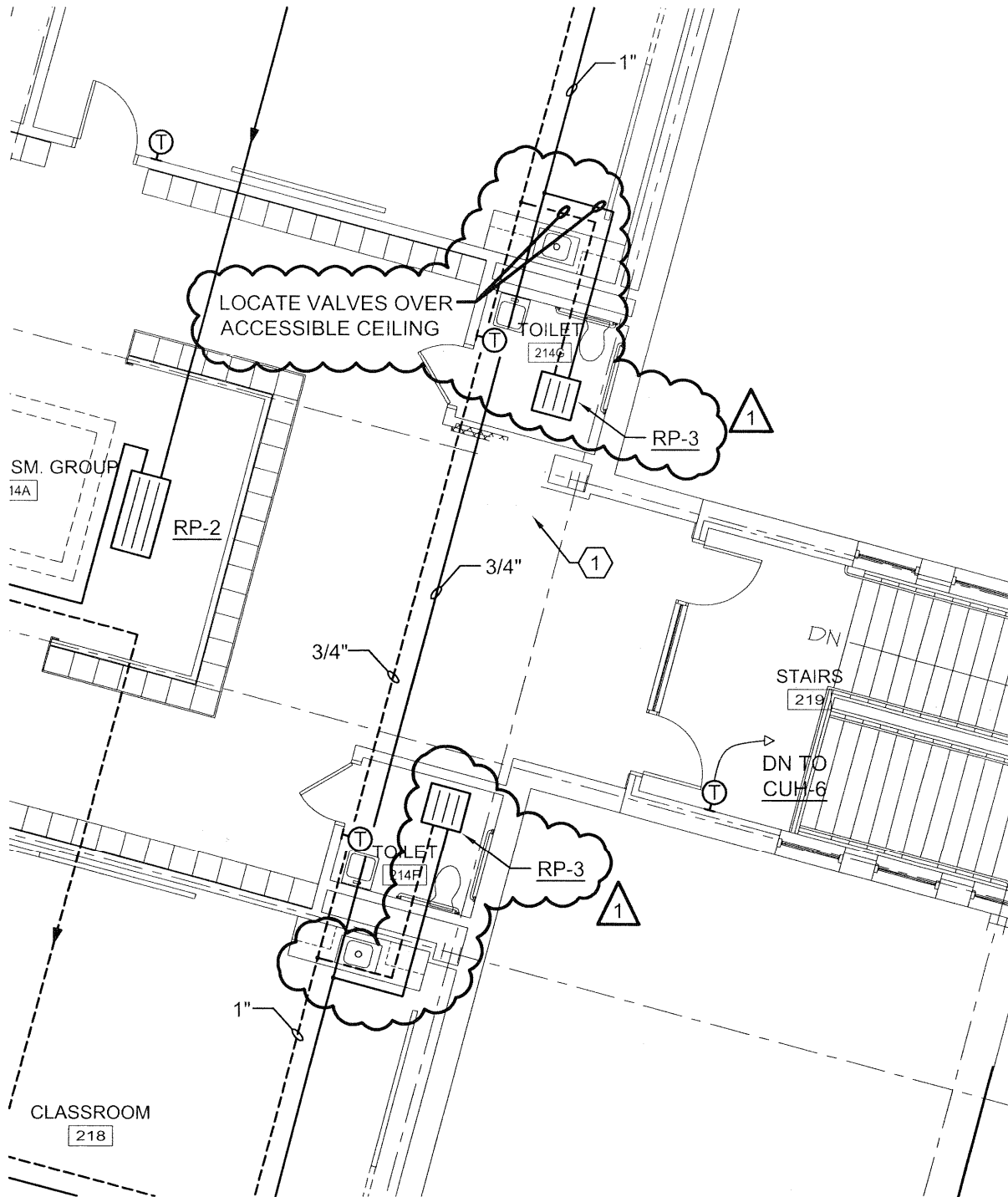
SHEET TITLE:

TOILET ROOMS
 RADIANT PANEL PIPING

CHECKED BY: DMON ADD1-MP102-B-1

DATE: 04-14-09

© COPYRIGHT 2007 WBRC



WBRC
 ARCHITECTS • ENGINEERS

BANGOR, MAINE
 207-947-4511
 PORTLAND, MAINE
 207-828-4511
 SARASOTA, FLORIDA
 941-556-0757
 WWW.WBRCAE.COM

SCALE: 1/8" = 1'-0"

WBRC CAD FILE: 331610-MP102-C

PROJECT No. 3316.10

JOB CAP/DRAW: CGB

PROJECT:

OCEAN AVENUE
 ELEMENTARY SCHOOL

PM: MEJ SHEET No.

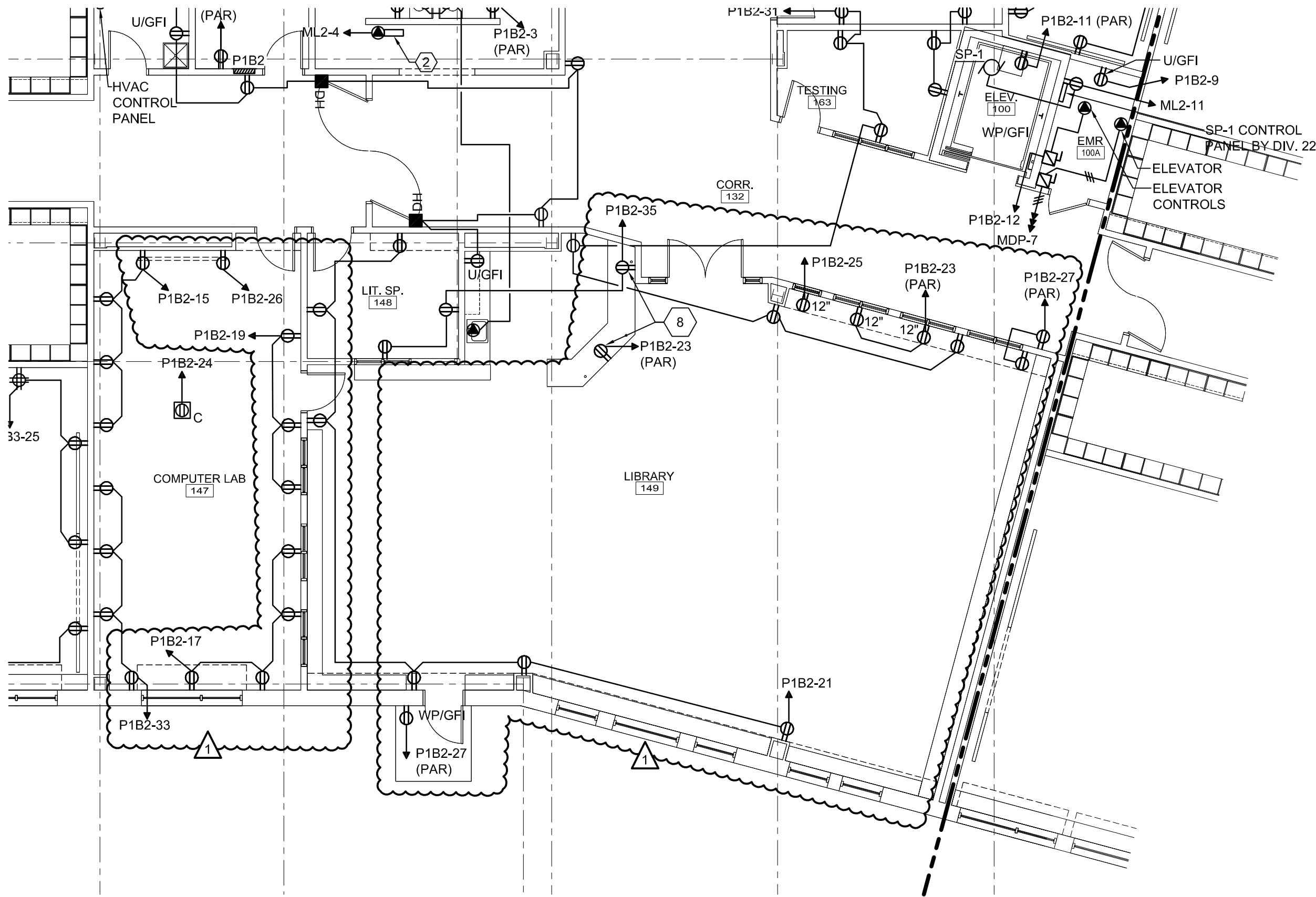
SHEET TITLE:

TOILET ROOMS
 RADIANT PANEL PIPING

CHECKED BY: DMON ADD1-MP102-C-1

DATE: 04-14-09

© COPYRIGHT 2007 WBRC



PROJECT:
 OCEAN AVENUE
 ELEMENTARY
 SCHOOL

SHEET TITLE:
 ADD. #1

SCALE: 1/8" = 1'-0"

WBRC CAD FILE: 3316.10-EP101-B

PROJECT No. 3316.10

JOB CAP/DRAW: JBL

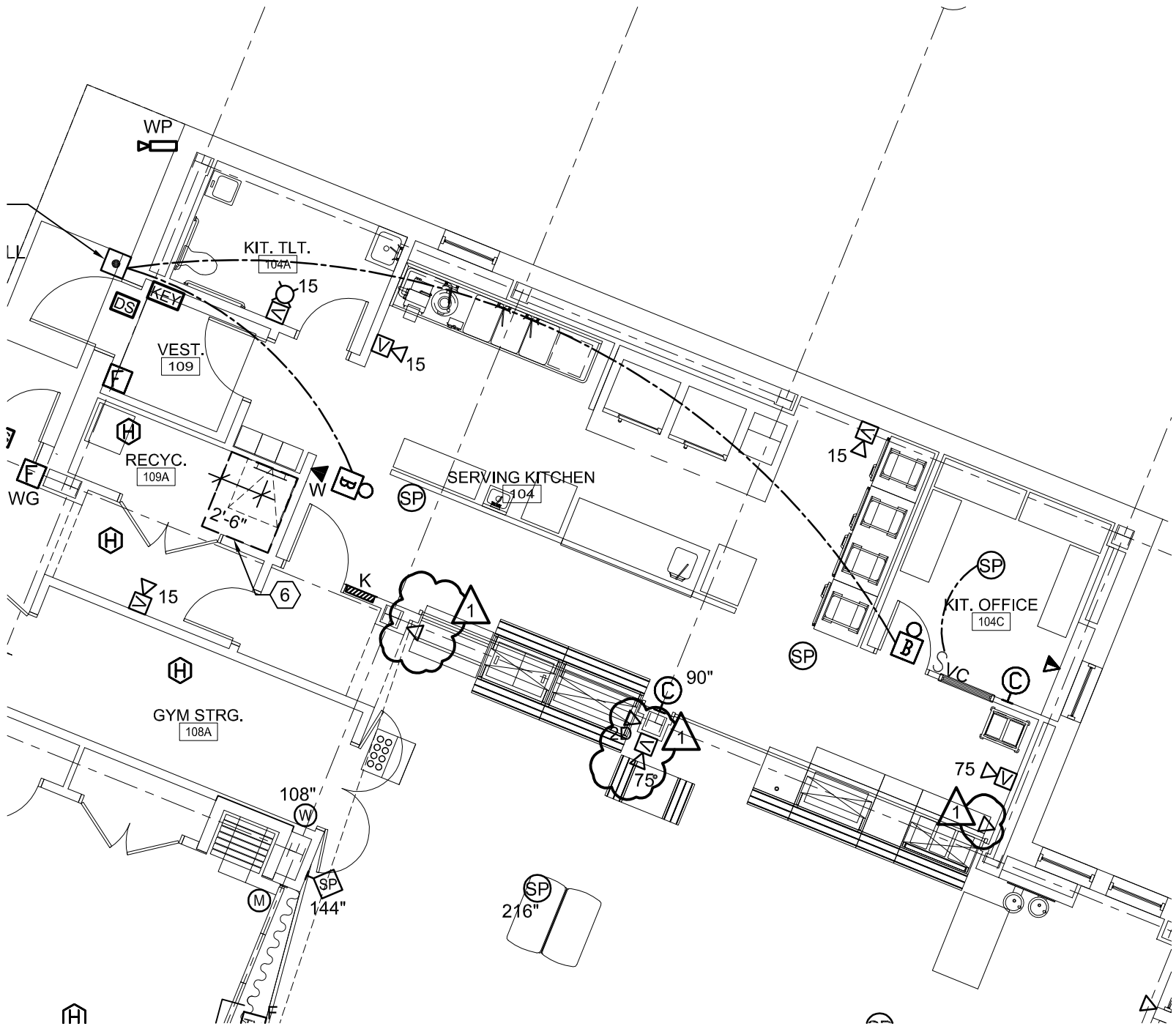
PM: MEJ

CHECKED BY: SJL

DATE: 04.14.09

SHEET No.

ADD1-EP101-B-1



PROJECT:
**OCEAN AVENUE
 ELEM. SCHOOL**

SHEET TITLE:
ADD. #1

SCALE: 1/8" = 1'-0"

WBRC CAD FILE: 3316.10-EY101-A

PROJECT No. 3316.10

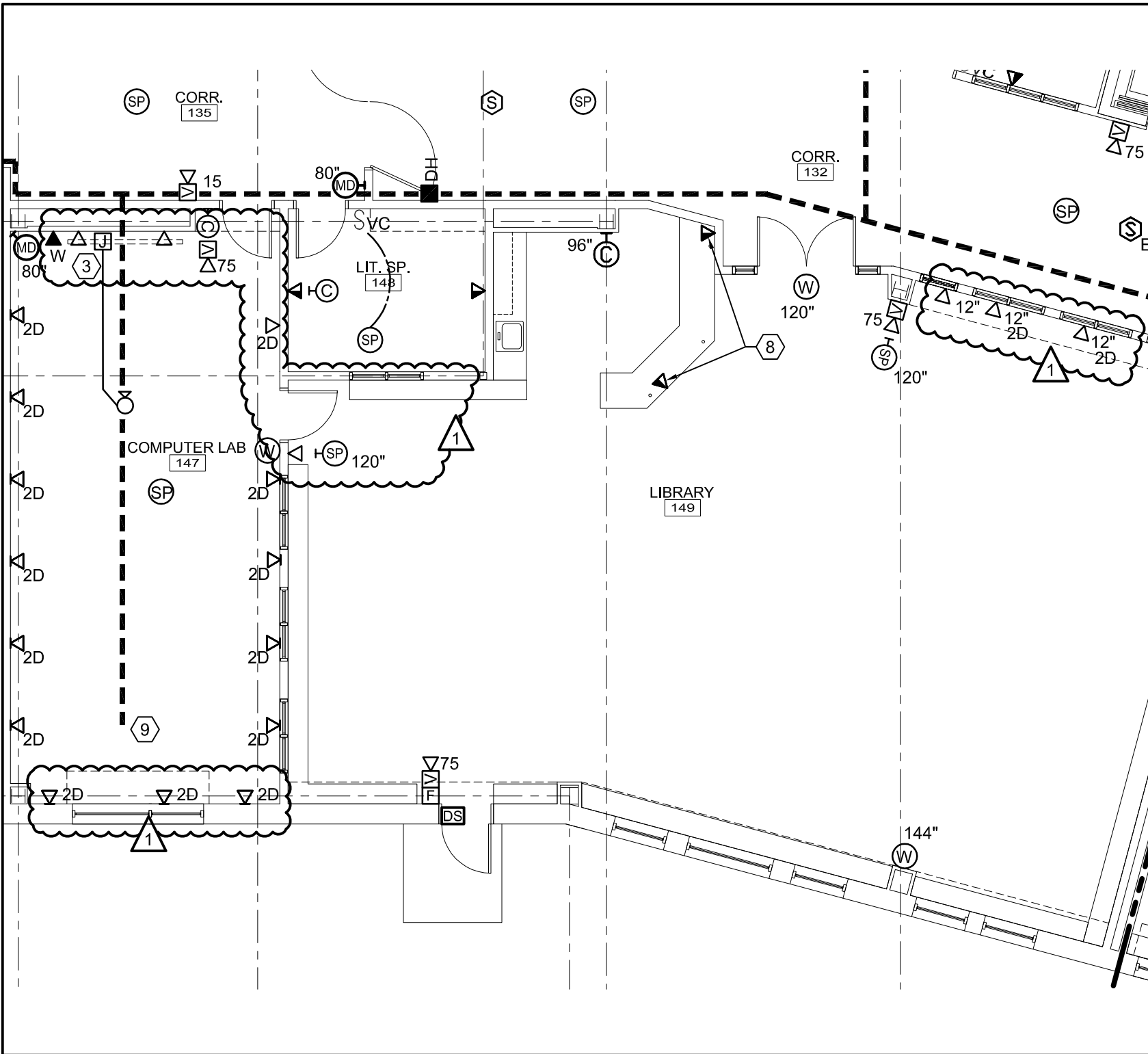
JOB CAP/DRAW: JBL

PM: MEJ

CHECKED BY: SJL

DATE: 04.14.09

SHEET No.
ADD1-EY101-A-1



PROJECT:
**OCEAN AVENUE
 ELEMENTARY
 SCHOOL**

SHEET TITLE:
ADD. #1

SCALE: 1/8" = 1'-0"

WBRC CAD FILE: 3316.10-EY101-B

PROJECT No. 3316.10

JOB CAP/DRAW: JBL

PM: MEJ

CHECKED BY: SJL

DATE: 04.14.09

SHEET No.
ADD1-EY101-B-1

PANEL			P1B2									
VOLTAGE: 120/208V			PHASES: 3		WIRE: 4		TYPE: SQUARE D NQOD		LOCATION: CORR. 132			
225A MLO			FED FROM: DPP					MOUNTING: FLUSH				
SERVICE	KW	BRKR	NOTE	NO	PHASE	NO	NOTE	BRKR	KW	SERVICE		
REC - FAC WKRM, LOUNGE	1.0	1P20		1	A	2		1P20	1.0	COPIER - FACULTY WORKROOM		
REC - FAC LOUNGE, TLTS, CUST	1.4	1P20		3	B	4		1P20	1.0	COPIER - FACULTY WORKROOM		
REC - SOC. WORK, CONF.	1.2	1P20		5	C	6		1P20	1.4	REFRIGERATOR - FAC LOUNGE		
REC -CONF., TESTING, SPEECH	1.0	1P20		7	A	8		1P20	1.1	DISHWASHER - FAC LOUNGE		
REC - ELEV. MACH. ROOM	0.2	1P20		9	B	10		1P20	1.0	MICROWAVE - FAC LOUNGE		
REC & LIGHTS - ELEV. PIT	0.3	1P20		11	C	12		1P20	0.5	ELEVATOR CONTROLS		
REC - CORR, TEST, SOC., FAC.	1.4	1P20		13	A	14		1P20	1.2	ELECTRIC WATER COOLER		
REC -COMPUTER LAB	0.8	1P20		15	B	16		1P20	0.1	OBSERVATION AMPLIFIER - SOC WORK 127		
REC - COMPUTER LAB.	0.8	1P20		17	C	18		1P20	1.0	FIRE ALARM EXTENDER- SEG B		
REC - COMPUTER LAB.	0.6	1P20		19	A	20		1P20	1.6	REC. - LAPTOP CART - K 138		
REC - LIBRARY, LIT. SPEC.	1.2	1P20		21	B	22		1P20	0.2	FAUCET & FLUSH VALVE- TLT, LIBRARY		
REC - LIBRARY	0.6	1P20		23	C	24		1P20	0.3	PROJECTOR - COMPUTER LAB		
REC - LIBRARY PRINTER	1.0	1P20		25	A	26		1P20	1.5	REC - PRINTER - COMPUTER LAB		
REC - EXT.,LIBRARY, CORR	0.6	1P20		27	B	28		1P20	0.2	FAUCET & FLUSH VALVE- K, TLT		
REC - TEST, CONF, SOC., CORR	1.2	1P20		29	C	30		1P20	0.8	REC. - K 146		
REC - TEST, SPEECH LIB, LIT	1.2	1P20		31	A	32		1P20	0.8	REC. - K 138		
REC - COMPUTER LAB	0.8	1P20		33	B	34		2P20		FLOOR SCRUBBER (FUTURE)		
REC - LIBRARY, LIT. SPEC.	0.6	1P20		35	C	36		---		FLOOR SCRUBBER (FUTURE)		
SPARE		1P20		37	A	38		---		SPACE		
SPARE		1P20		39	B	40		---		SPACE		
SPARE		1P20		41	C	42		---		SPACE		



PROJECT:

OCEAN AVENUE
ELEM. SCHOOL

SHEET TITLE:

ADD. #1

SCALE: N.T.S.

WBRC CAD FILE: 3316.10-E-601

PROJECT No. 3316.10

JOB CAP/DRAW: JBL

PM: MEJ

CHECKED BY: SJL

DATE: 04.14.09

SHEET No.

ADD1-E-601-1