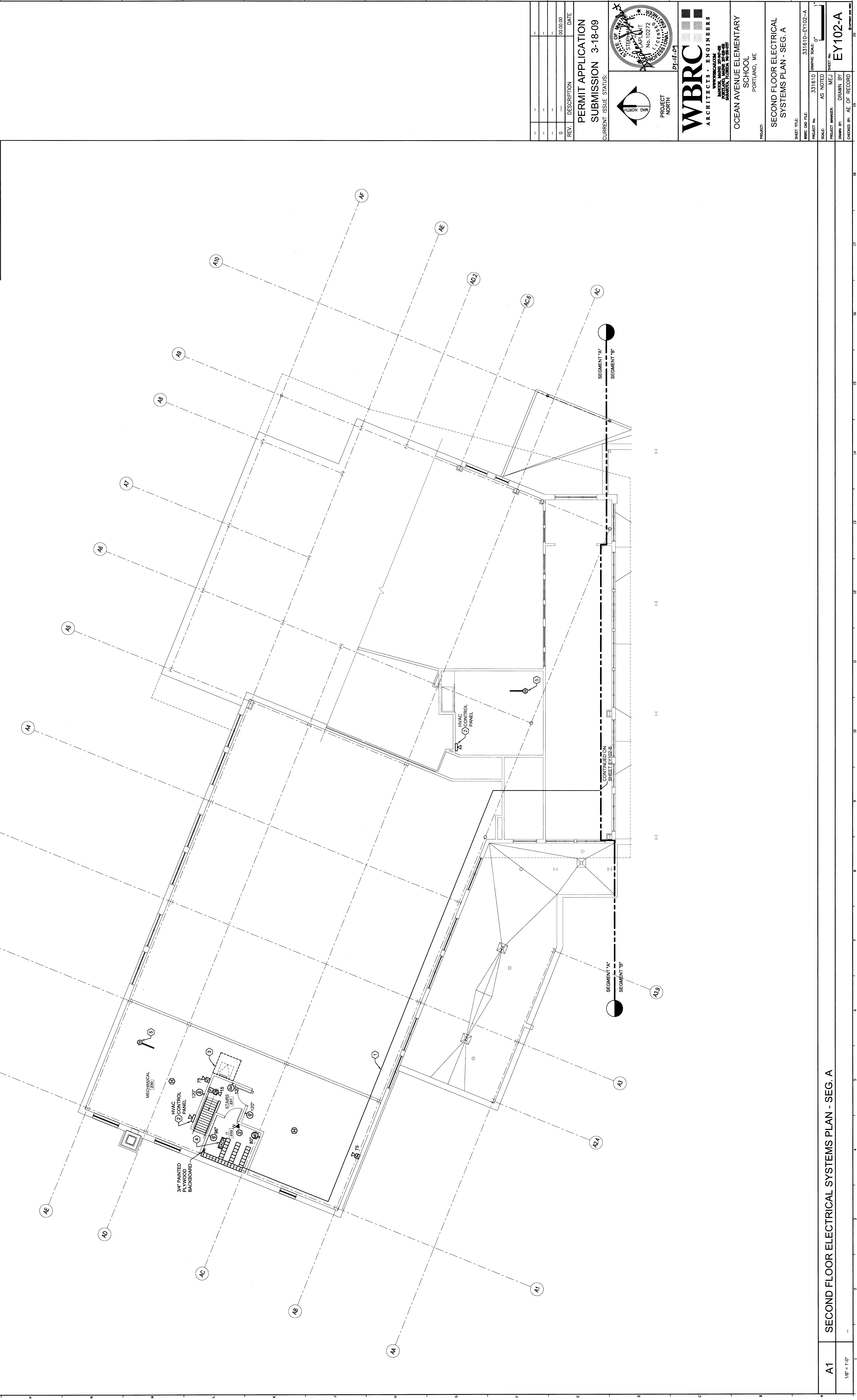
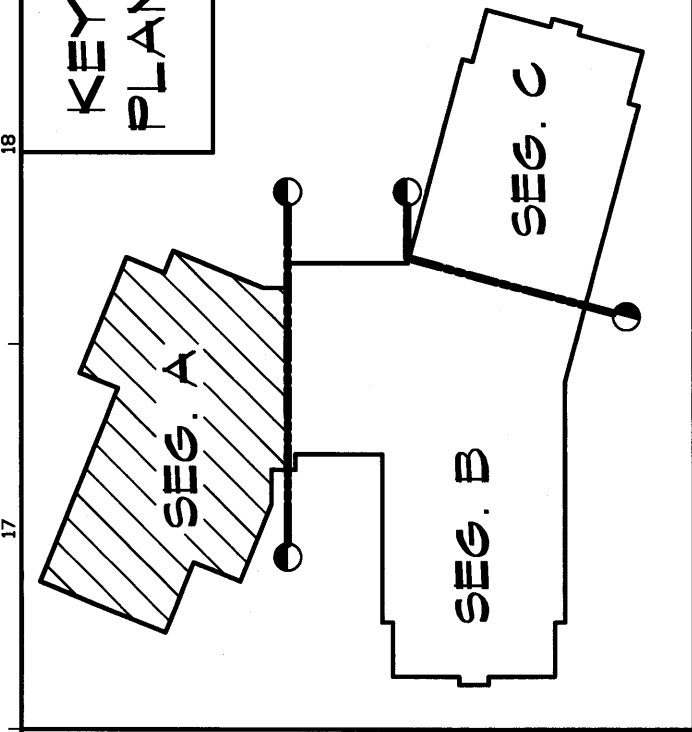


TECHNICAL NOTES:

- PROVIDE 3/4" CONDUITS ALONG MECHANICAL ROOM AND GYM CEILING FOR COMMUNICATIONS & SECURITY CABLING. PROVIDE PULLBOXES AS REQUIRED.
- PROVIDE DATA JACK W/ STATIC IP ADDRESS AT HVAC CONTROL PANEL.
- 5 SQUARE CLEAR SPACE FOR ROOF HATCH. DO NOT TRAP PIPES, CONDUIT, ETC. FROM FLOOR TO ROOF DECK.
- PACK MOUNTED SECURITY ALARM CONTROL PANEL.
- DUCT MOUNTED SMOKE DETECTOR PROVIDED BY MECHANICAL CONTRACTOR. PROVIDE SMOKE DETECTOR ALARM SYSTEM BY 24/7 STAN 120V/4P POWER FROM NEARBY RECEPTACLE CIRCUIT.



REV.	DESCRIPTION	DATE
0		08.09.09

**PERMIT APPLICATION
SUBMISSION 3-18-09**

CURRENT ISSUE STATUS:



WBRC
ARCHITECTS • ENGINEERS

OCEAN AVENUE ELEMENTARY
SCHOOL
PORTLAND, ME

SECOND FLOOR ELECTRICAL
SYSTEMS PLAN - SEG. A

SHEET TITLE: 331610-01
PROJECT No. 331610
SCALE: AS NOTED
DRAWN BY: AE
CHECKED BY: AE OF RECORD

A1 SECOND FLOOR ELECTRICAL SYSTEMS PLAN - SEG. A

1/8" = 1'-0"