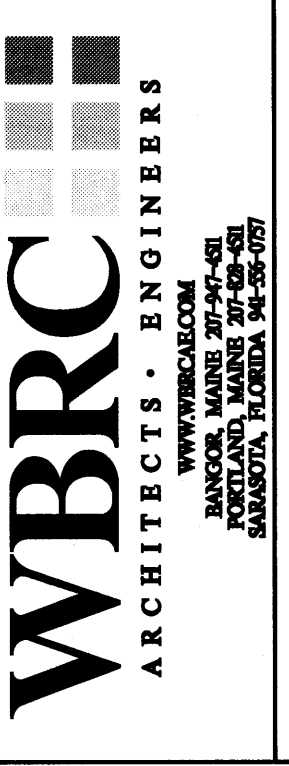


TECHNICAL NOTES:

- 1 NOT USED
- 2 VFDS & ASSOCIATED DISCONNECTS PROVIDED AND MOUNTED IN ACCORDANCE WITH THE NATIONAL ELECTRICAL CODE AND ASSOCIATED MOTOR SHALL BE PROVIDED BY DIV.26
- 3 MOUNT TO EQUIPMENT CURB OF ROOF-MOUNTED EQUIPMENT.
- 4 SQUARE CLEAR SPACE FOR ROOF-HATCH DO NOT RUN PIPES, CONDUIT, ETC FROM FLOOR TO ROOF DECK
- 5 ELECTRONIC TRAP PRIMER - CONTROLS PROVIDED BY DIV.22. CONNECTION AND POWER TO UNIT BY DIV.22. REFER TO PLUMBING DRAWINGS FOR MORE INFORMATION

REV.	DESCRIPTION	DATE
0		00/00/00

PERMIT APPLICATION
SUBMISSION 3-18-09
CURRENT ISSUE STATUS:



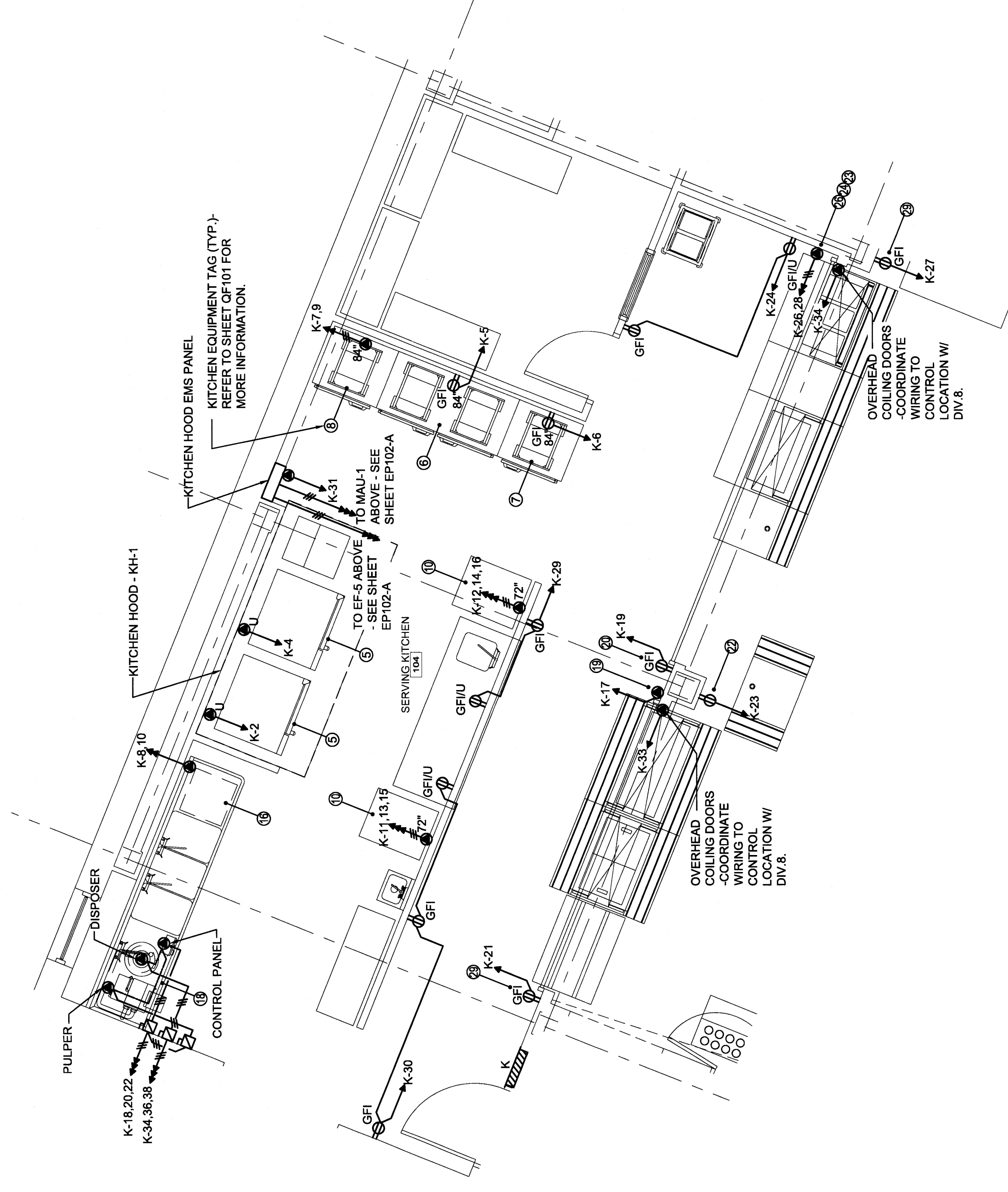
WBRC ARCHITECTS - ENGINEERS
 100 WASHINGTON STREET, SUITE 200
 PORTLAND, MAINE 04101
 TEL: 603.761.7600
 FAX: 603.761.7601
 WWW.WBRC-ARCHITECTS.COM

OCEAN AVENUE ELEMENTARY SCHOOL
 PORTLAND, ME

PROJECT: ENLARGED POWER PLANS

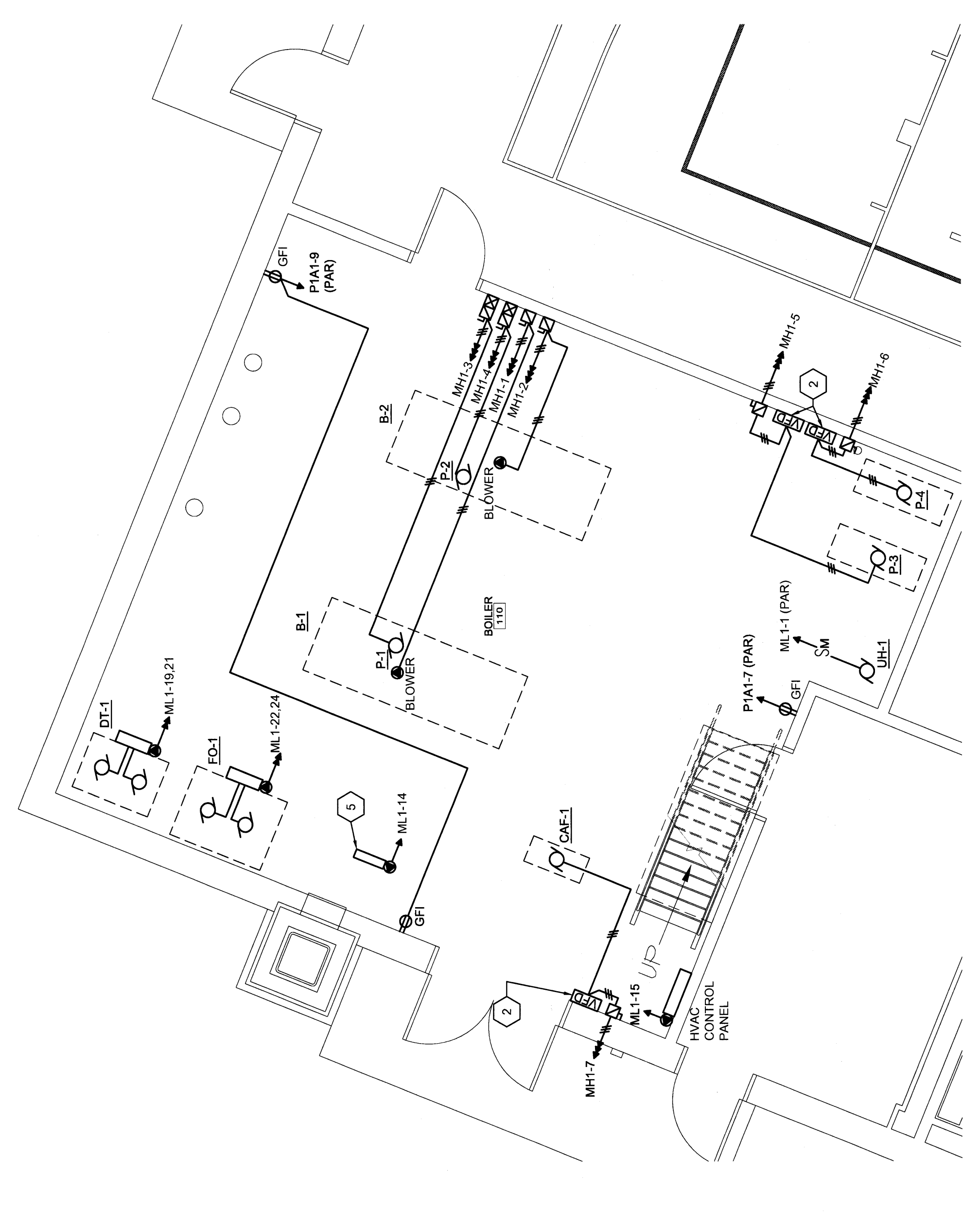
SHEET TITLE: 331610-EP401
 SHEET No. 01
 PROJECT No. 331610
 DRAWING SCALE: AS NOTED

DESIGNED BY: MEJ
 CHECKED BY: SLL
 PROJECT MANAGER: MEJ
 SHEET No. EP401



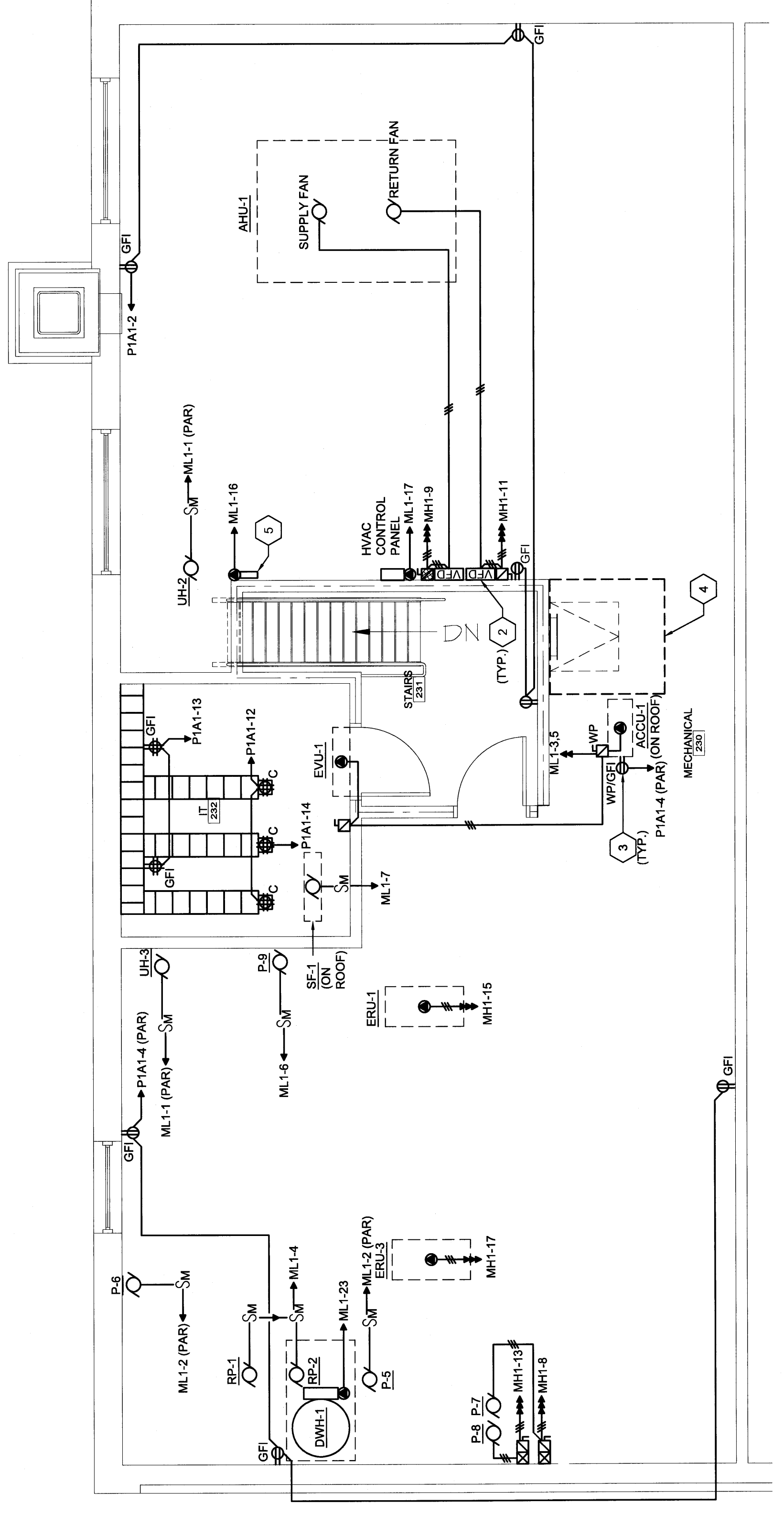
J12 ENLARGED KITCHEN EQUIPMENT PLAN

1/4" = 1'-0"



A12 ENLARGED BOILER 110 PLAN

1/4" = 1'-0"



J8 ENLARGED MECHANICAL 230 PLAN

1/4" = 1'-0"