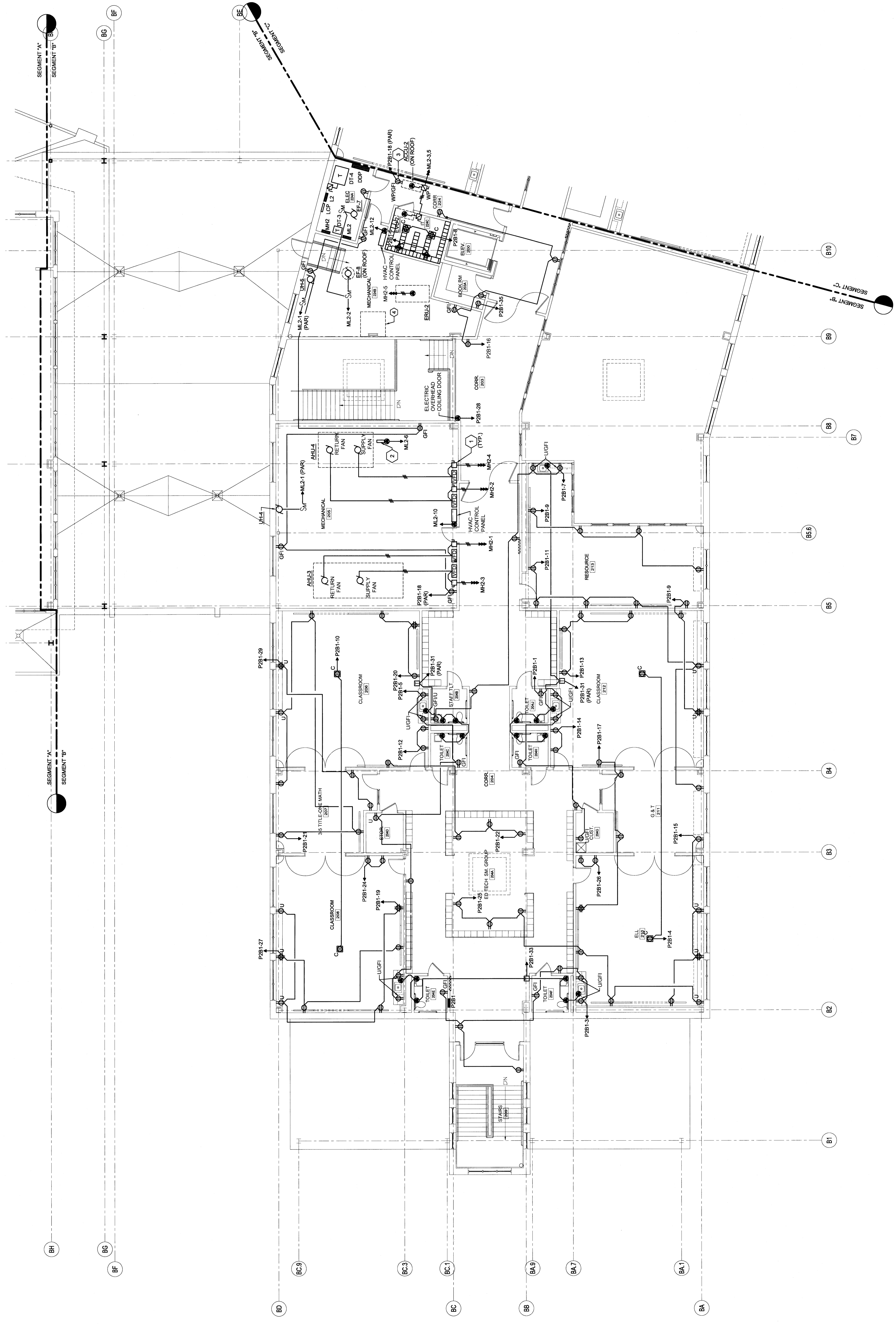
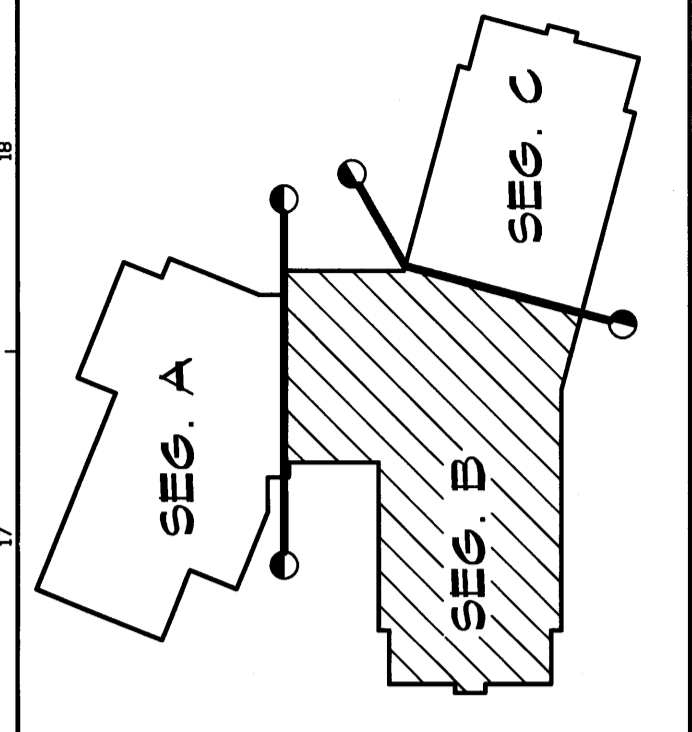


TECHNICAL NOTES:

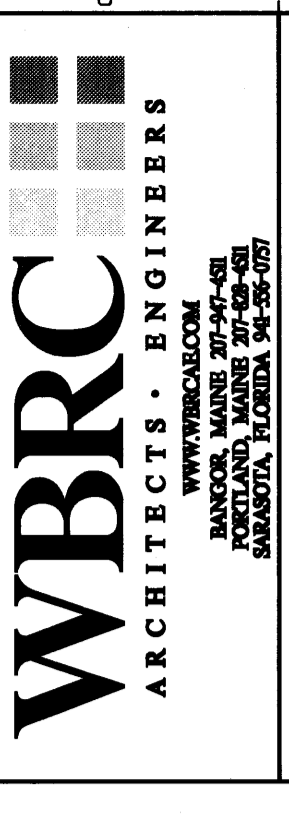
1. ALL ASSOCIATED DISCONNECTS, CIRCUIT BREAKERS AND INSTALLED BY THE CONTRACTOR. POWER CONNECTION TO VFD AND BETWEEN VFD AND ASSOCIATED MOTOR SHALL BE PROVIDED BY DIV. 26.
2. ELECTRICAL TRAP PRIMER - CONTROLS PROVIDED BY DIV. 22. CONNECTION AND POWER TO UNIT BY CONTRACTOR. REFER TO PLUMBING DRAWINGS FOR MORE INFORMATION.
3. MOUNT TO EQUIPMENT CURB OF ROOF-MOUNTED EQUIPMENT.
4. PROVIDE CLEAR SPACE FOR ROOF HATCH, DO NOT PROVIDE RISERS, GANTRY, ETC. FROM HATCH TO ROOF DECK.

KEY PLAN



REV.	DESCRIPTION	DATE
0	ISSUED	03/01/24

PERMIT APPLICATION
SUBMISSION 3-18-09
 CURRENT ISSUE STATUS:



WBRC
 ARCHITECTS • ENGINEERS
 100 WATER STREET
 PORTLAND, ME 04101
 (603) 876-1111

OCEAN AVENUE ELEMENTARY SCHOOL
 PORTLAND, ME
 SECOND FLOOR ELECTRICAL POWER PLAN - SEG. B

SHEET TITLE: 331610-EP102-B
 PRODUCT NO.: 331610 DRAWING SCALE: 1/8" = 1'-0"
 PROJECT MANAGER: MEJ
 DRAWN BY: JBL
 CHECKED BY: SLL
 SHEET NO.: EP102-B

A1 SECOND FLOOR ELECTRICAL POWER PLAN - SEG. B

1/8" = 1'-0"