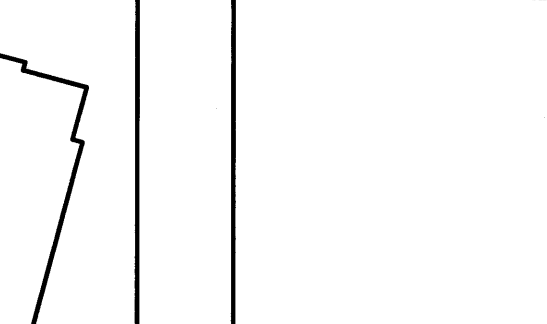
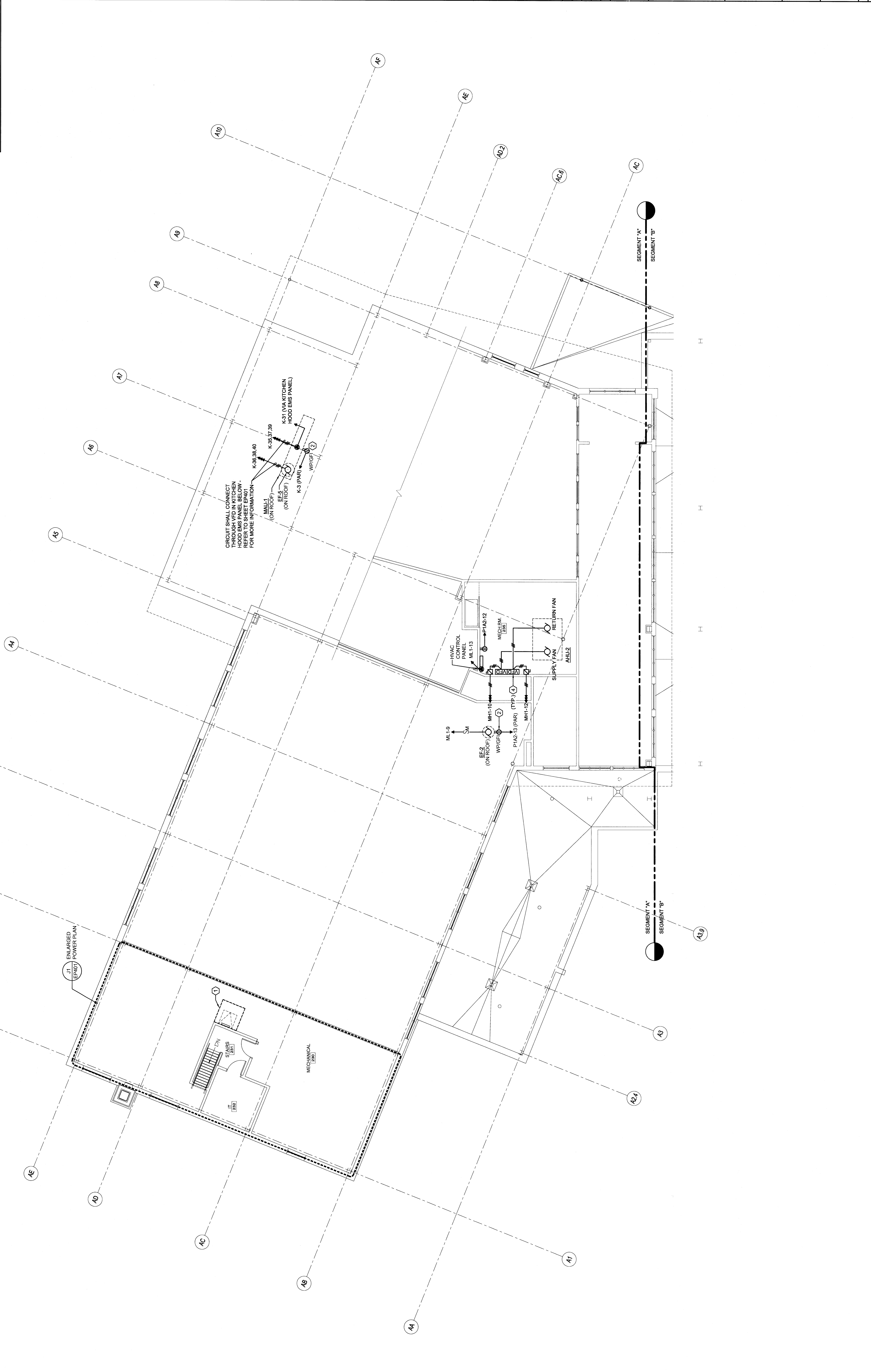


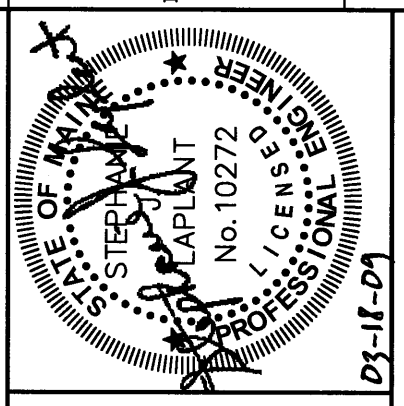
- TECHNICAL NOTES:**
- 1) MAINTAIN CLEAR SPACE FOR ROOF WATCH DO NOT RUN CABLES OR CONDUIT, ETC. FROM FLOOR TO ROOF DECK.
 - 2) MOUNT TO EQUIPMENT CURB OF ROOF-MOUNTED EQUIPMENT.
 - 3) ELECTRONIC TRANS PRIMER - CONTROLS PROVIDED BY DIV 26. CONNECTION AND POWER TO UNIT FOR MORE INFORMATION.
 - 4) VEDS & ASSOCIATED DISCONNECTS PROVIDED AND INSTALLED BY DIV 23. POWER CONNECTION TO VEDS SHALL BE PROVIDED BY DIV 26. ASSOCIATED WAFOR SHALL BE PROVIDED BY DIV 26.

KEY PLAN

REV.	DESCRIPTION	DATE
0	ISSUED	03/18/09

**PERMIT APPLICATION
SUBMISSION 3-18-09**
CURRENT ISSUE STATUS:



PROJECT NORTH

WBRC
ARCHITECTS - ENGINEERS

100 WEST BAY STREET
BALTIMORE, MARYLAND 21201
410.326.7000

DT-1F-21

OCEAN AVENUE ELEMENTARY
SCHOOL
PORTLAND, ME

SECOND FLOOR ELECTRICAL
POWER PLAN - SEG. A

SHEET TITLE: 331610-EP102-A
WBRC JOB FILE: 331610
PROJECT No.: 331610-EP102-A
SCALE: 1/8" = 1'-0"
PROJECT NUMBER: MEJ
DRAWN BY: JBL
CHECKED BY: SLL

A1 SECOND FLOOR ELECTRICAL POWER PLAN - SEG. A
1/8" = 1'-0"