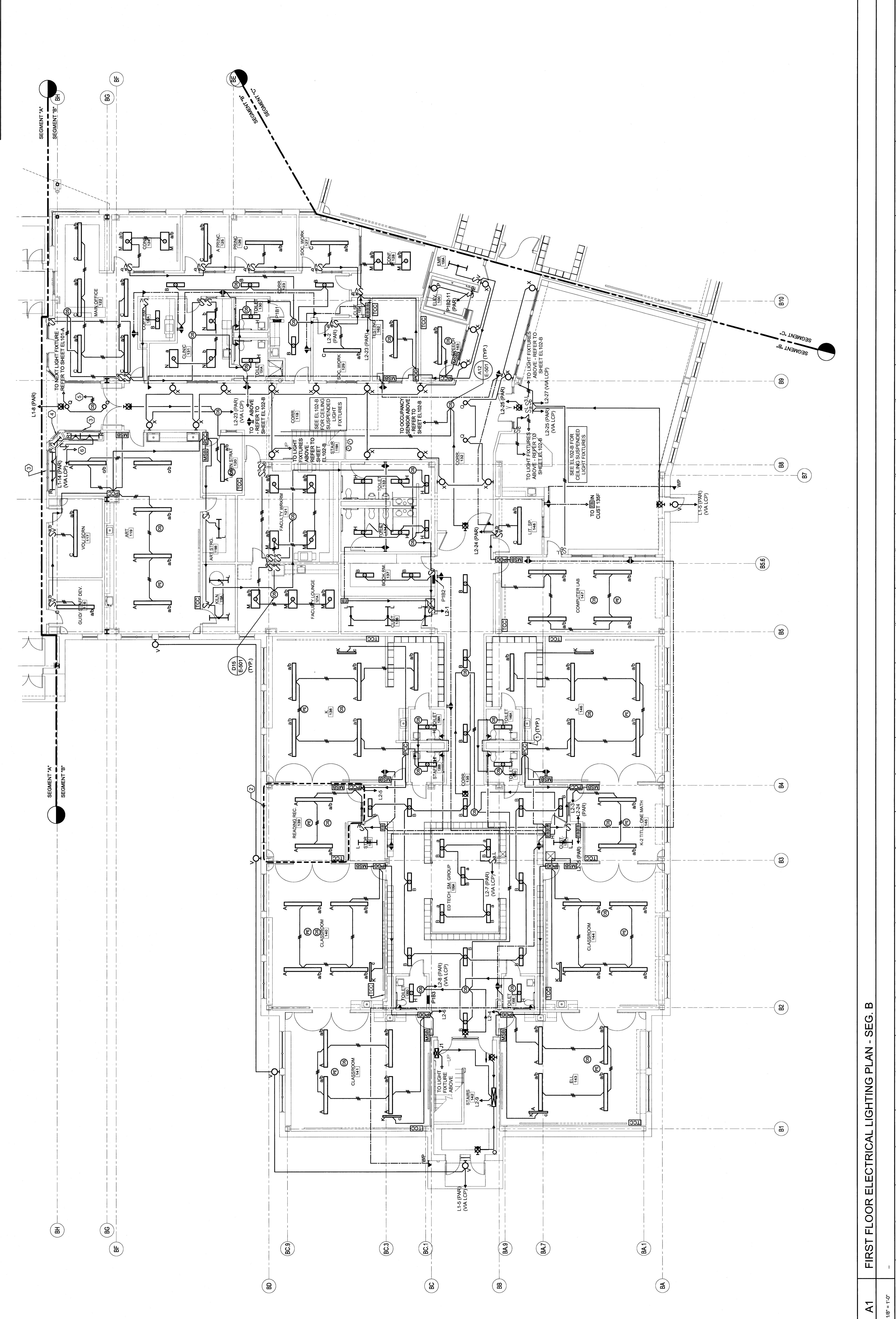


- TECHNICAL NOTES:**
1. DIMMER CONTROL CENTER - MOUNT ABOVE SUSPENDED CEILING
 2. PLUG & PLAY CONNECTIONS NOT SHOWN FOR LIGHT FIXTURES. REFER TO THE NEXT SHEET FOR ADDITIONAL WIRING INFORMATION (TYP.)
 3. REAR LOAD DISPLAY CASE - FIXTURES ON TOP AND BOTTOM - REFER TO DETAIL J15AF502 FOR ADDITIONAL LAYOUT INFORMATION.
 4. FRONT LOAD DISPLAY CASE - FIXTURES ON TOP AND BOTTOM - REFER TO DETAIL J11AF502 FOR ADDITIONAL LAYOUT INFORMATION.
 5. TO NEXT OCCUPANCY SENSOR - REFER TO SHEET EL101-A FOR NEXT DEVICE.
 6. TO DISPLAY CASE FIXTURE IN LOBBY 102 - REFER TO SHEET EL101-A FOR MORE INFORMATION.



REV.	DESCRIPTION	DATE
0		03.02.09

**PERMIT APPLICATION
SUBMISSION 3-18-09**
CURRENT ISSUE STATUS:



WBRC
ARCHITECTS • ENGINEERS
100 WASHINGTON STREET
PORTLAND, MAINE 04101
PHONE: 603.761.1111
FAX: 603.761.1112

PROJECT NORTH

OCEAN AVENUE ELEMENTARY SCHOOL
PORTLAND, ME

FIRST FLOOR ELECTRICAL LIGHTING PLAN - SEG. B

PROJECT: OCEAN AVENUE ELEMENTARY SCHOOL
SHEET TITLE: FIRST FLOOR ELECTRICAL LIGHTING PLAN - SEG. B
SHEET NO.: EL101-B
DATE: 03/18/09
SCALE: AS NOTED
PROJECT MANAGER: MEJ
DRAWN BY: LHM
CHECKED BY: SML

A1 FIRST FLOOR ELECTRICAL LIGHTING PLAN - SEG. B

1/8" = 1'-0"