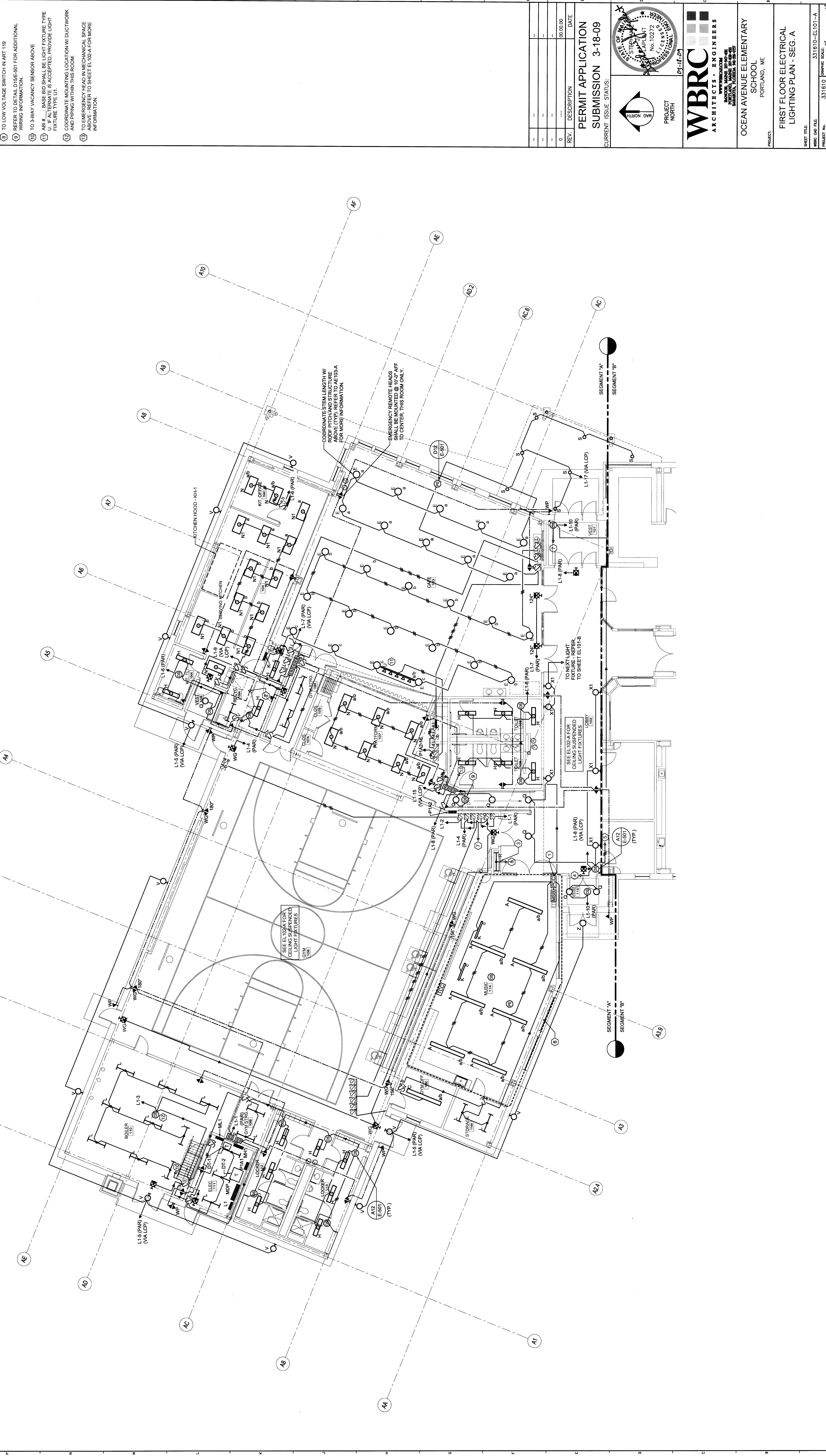
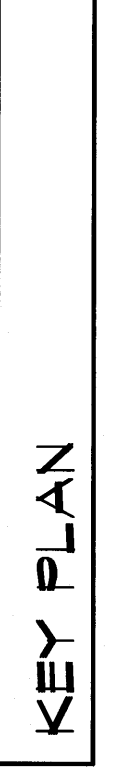
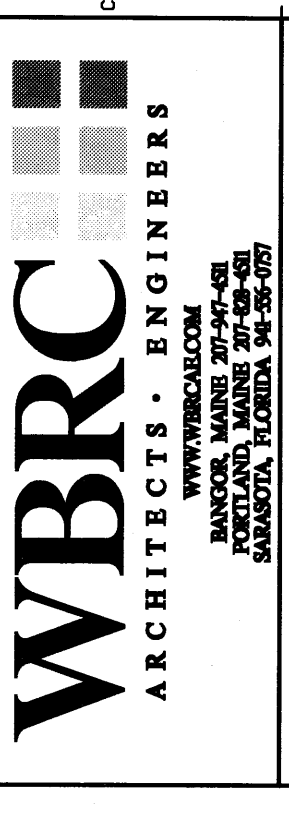


- TECHNICAL NOTES:**
- POWER CONTROL CENTER - MOUNT ABOVE SUSPENDED CEILING
 - CLEAR SPACE FOR ROOF HATCH, DO NOT RUN PIPES, CONDUIT, ETC FROM FLOOR TO ROOF DECK
 - FRONT LOAD DISPLAY CASE - FIXTURES ON TOP AND REFRIGERATION UNIT ARE 30" FOR ADDITIONAL LAYOUT INFORMATION.
 - TO PHOTOCELL ABOVE - REFER TO SHEET EL102A FOR WIRING INFORMATION.
 - TO NEXT OCCUPANCY SENSOR - REFER TO SHEET EL103 FOR NEXT DEVICE.
 - PLUG & PLAY CONNECTIONS NOT SHOWN FOR PHOTOCELLS, OCCUPANCY SENSORS, ETC. REFER TO SHEET EL102A FOR WIRING INFORMATION.
 - TO LIGHT FIXTURE ABOVE - REFER TO SHEET EL102A FOR WIRING INFORMATION.
 - TO LOW VOLTAGE SWITCH IN ART 119 WIRING INFORMATION.
 - REFER TO DETAIL D15E-901 FOR ADDITIONAL WIRING INFORMATION.
 - TO 3-WAY VACUANCY SENSOR ABOVE
 - ALL #___ BASE AND SMALL BE LIGHT FIXTURE TYPE U, IF ALTERNATE IS ACCEPTED, PROVIDE LIGHT FIXTURE TYPE U1.
 - COORDINATE MOUNTING LOCATION W/ DUCTWORK AND PIPING WITHIN THIS ROOM.
 - TO EMERGENCY HEAD IN MECHANICAL SPACE ABOVE - REFER TO SHEET EL102A FOR MORE INFORMATION.



REV.	DESCRIPTION	DATE
0		03/02/09

PERMIT APPLICATION
SUBMISSION 3-18-09
 CURRENT ISSUE STATUS:



WBRC
 ARCHITECTS - ENGINEERS
 1000 BROADWAY
 PORTLAND, ME 04101
 PROJECT NORTH
 OCEAN AVENUE ELEMENTARY SCHOOL
 PORTLAND, ME
 FIRST FLOOR ELECTRICAL LIGHTING PLAN - SEG. A

SHEET TITLE:	331610-EL101-A
PROJECT NO.:	331610
SCALE:	1/8" = 1'-0"
PROJECT MANAGER:	MEJ
DRAWN BY:	LWJ
CHECKED BY:	SUL
SHEET NO.:	EL101-A

A1 FIRST FLOOR ELECTRICAL LIGHTING PLAN - SEG. A
 1/8" = 1'-0"