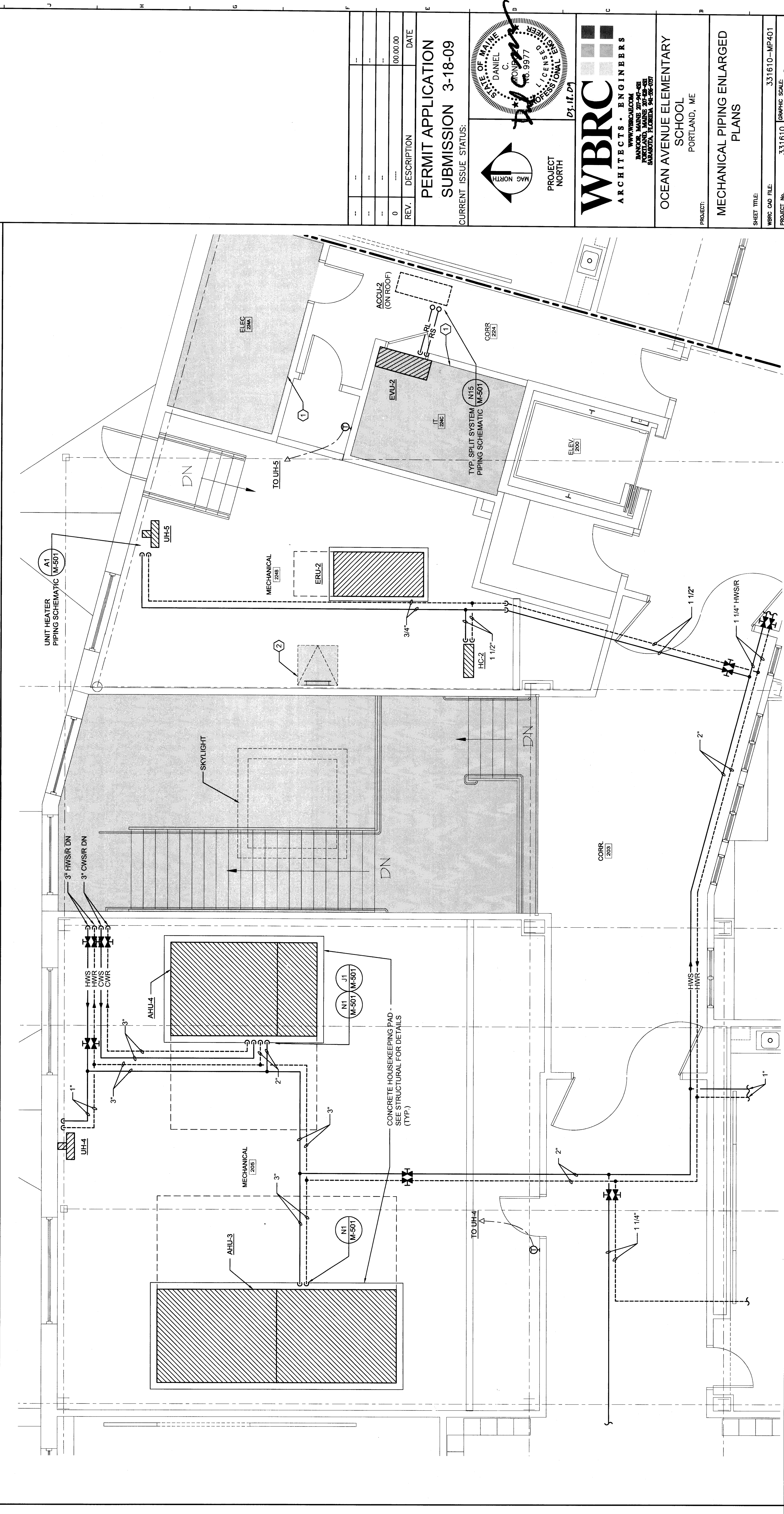
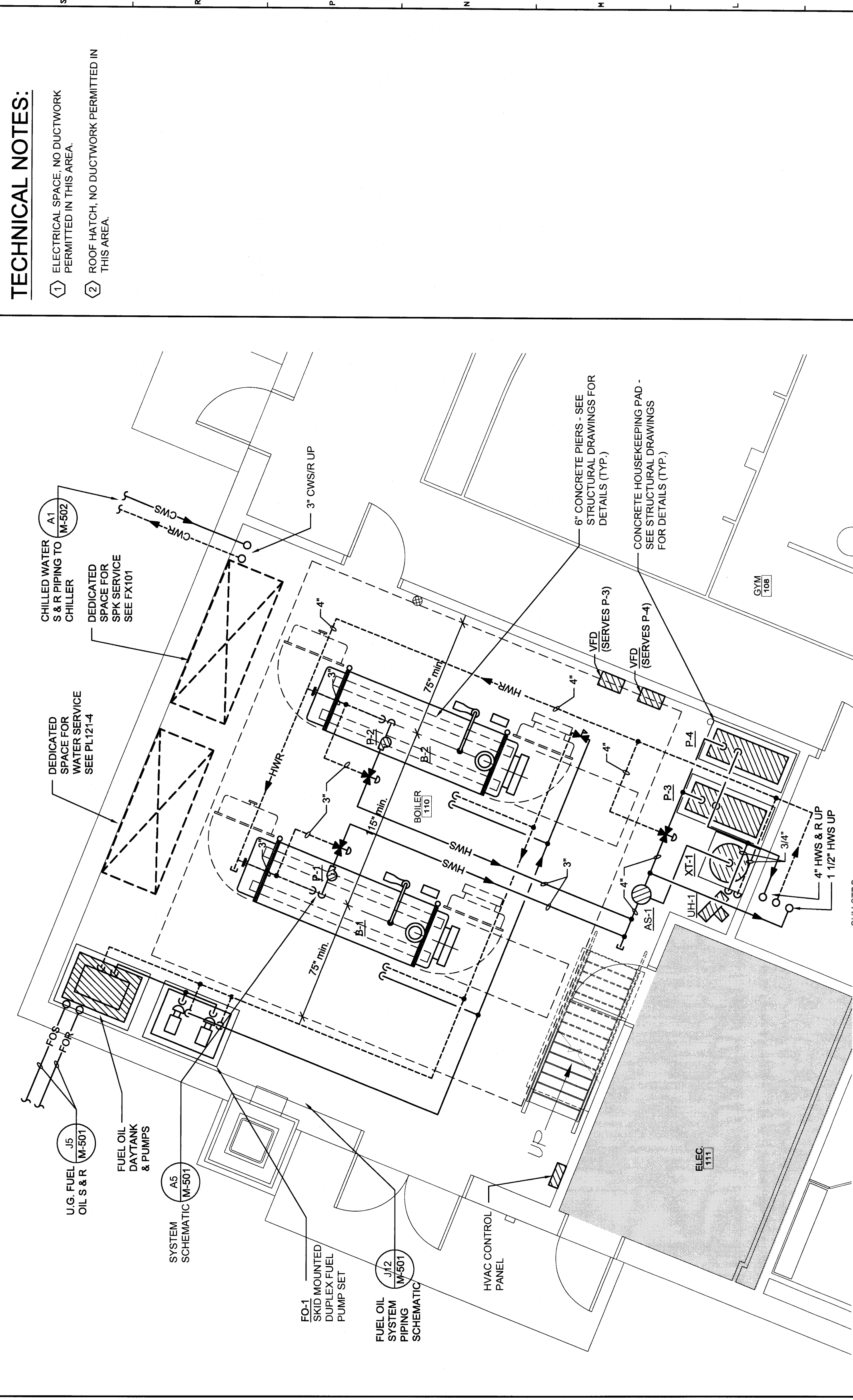


K12 BOILER ROOM 110 MECHANICAL PART PLAN
1/4" = 1'-0"



A7 MECHANICAL 205 & MECHANICAL 224B ENLARGED PIPING PLAN
1/4" = 1'-0"



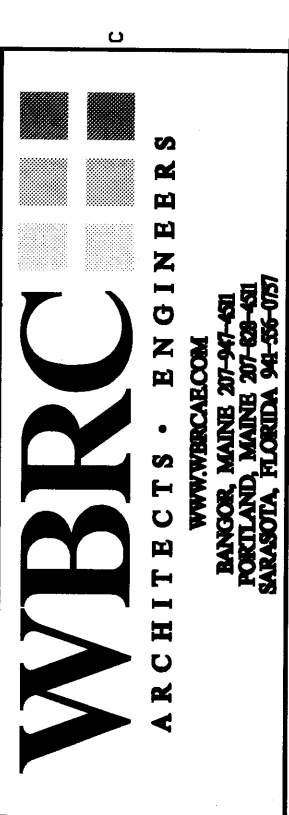
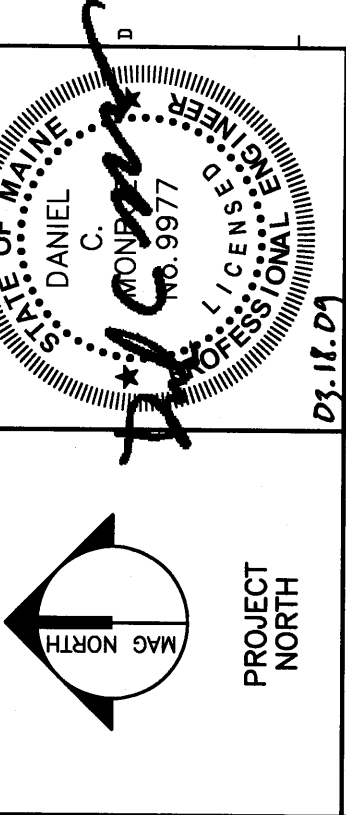
A1 MECHANICAL 230 ENLARGED MECHANICAL PIPING PLAN
1/4" = 1'-0"

TECHNICAL NOTES:

- 1 ELECTRICAL SPACE NO DUCTWORK PERMITTED IN THIS AREA.
- 2 ROOF HATCH NO DUCTWORK PERMITTED IN THIS AREA.

REV.	DESCRIPTION	DATE
0		08/08/08

PERMIT APPLICATION
SUBMISSION 3-18-09
CURRENT ISSUE STATUS:



OCEAN AVENUE ELEMENTARY SCHOOL
PORTLAND, ME

MECHANICAL PIPING ENLARGED PLANS

SHEET TITLE:	331610-MP401
PROJECT No.:	331610
SCALE:	AS NOTED
PROJECT MANAGER:	MEJ
DRAWN BY:	CSB
CHECKED BY:	DNON
SHEET No.:	MP401