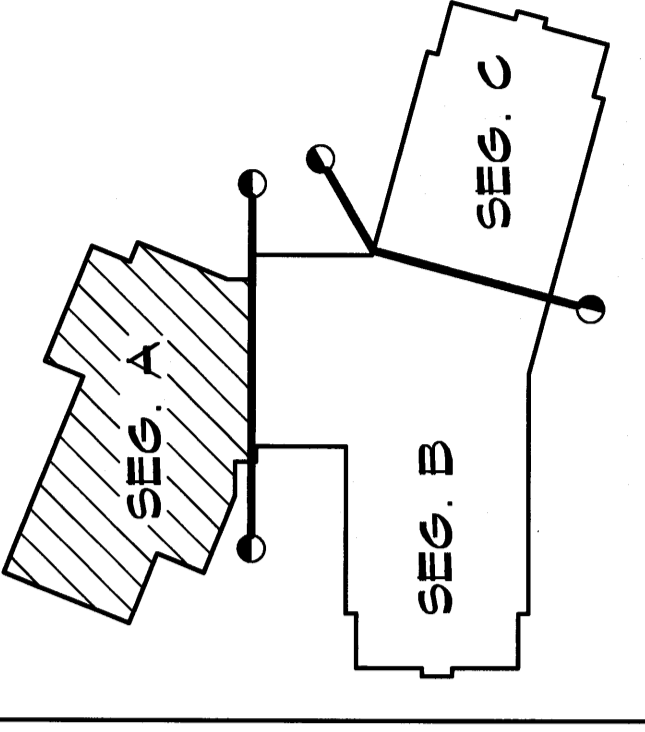
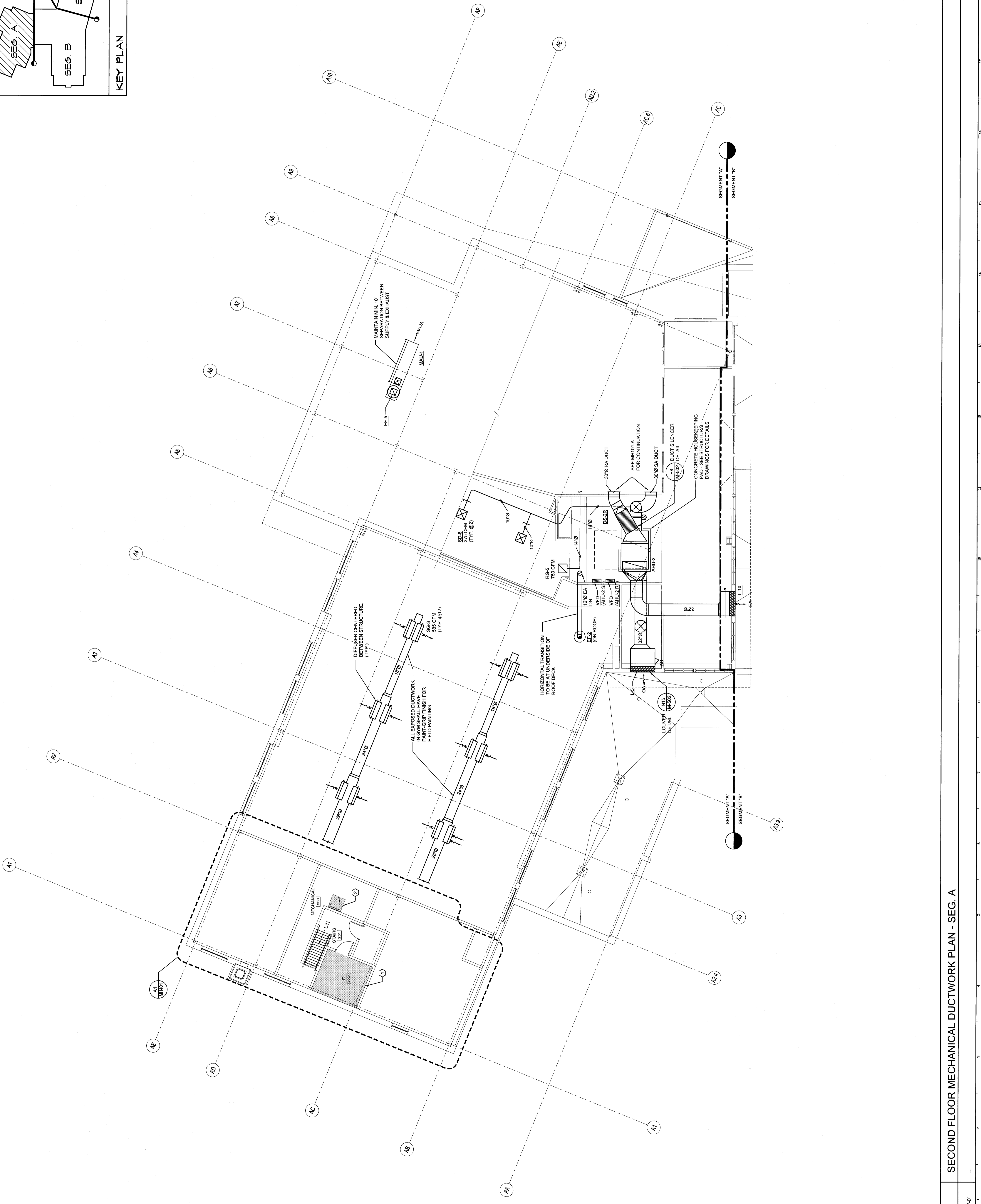


TECHNICAL NOTES:

- ① ELECTRICAL SPACE, NO DUCTWORK PERMITTED IN THIS AREA.
- ② ROOF HATCH, NO DUCTWORK PERMITTED IN THIS AREA.

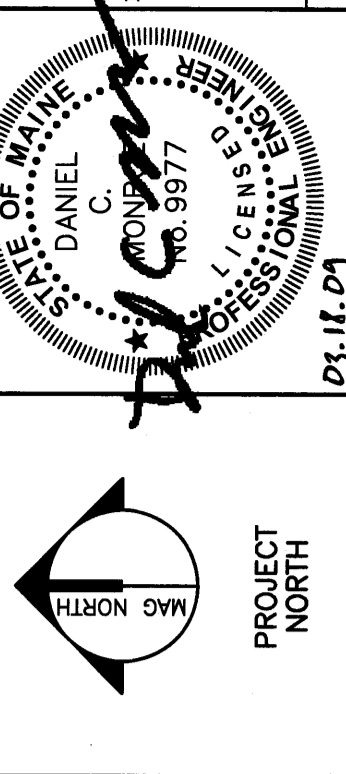


KEY PLAN



| REV. | DESCRIPTION | DATE |
|------|-------------|------|
| 0 | 00.00.00 | |

PERMIT APPLICATION
SUBMISSION 3-18-09
CURRENT ISSUE STATUS:



WBRC
ARCHITECTS - ENGINEERS
WWW.WBRC.COM
1000 WASHINGTON ST., SUITE 200
PORTLAND, ME 04101-3000
TEL: 603.761.1111
FAX: 603.761.1112

PROJECT:
OCEAN AVENUE ELEMENTARY SCHOOL
PORTLAND, ME

PROJECT TITLE:
SECOND FLOOR MECHANICAL DUCTWORK PLAN - SEG. A

| | |
|----------------|----------------|
| SHEET NO. | 331610-MH102-A |
| PROJECT NO. | 331610 |
| SCALE | 1/8" = 1'-0" |
| PROJECT NUMBER | MEJ |
| DRAWN BY | COB |
| CHECKED BY | DMON |
| SHEET NO. | MH102-A |

A1 SECOND FLOOR MECHANICAL DUCTWORK PLAN - SEG. A

1/8" = 1'-0"