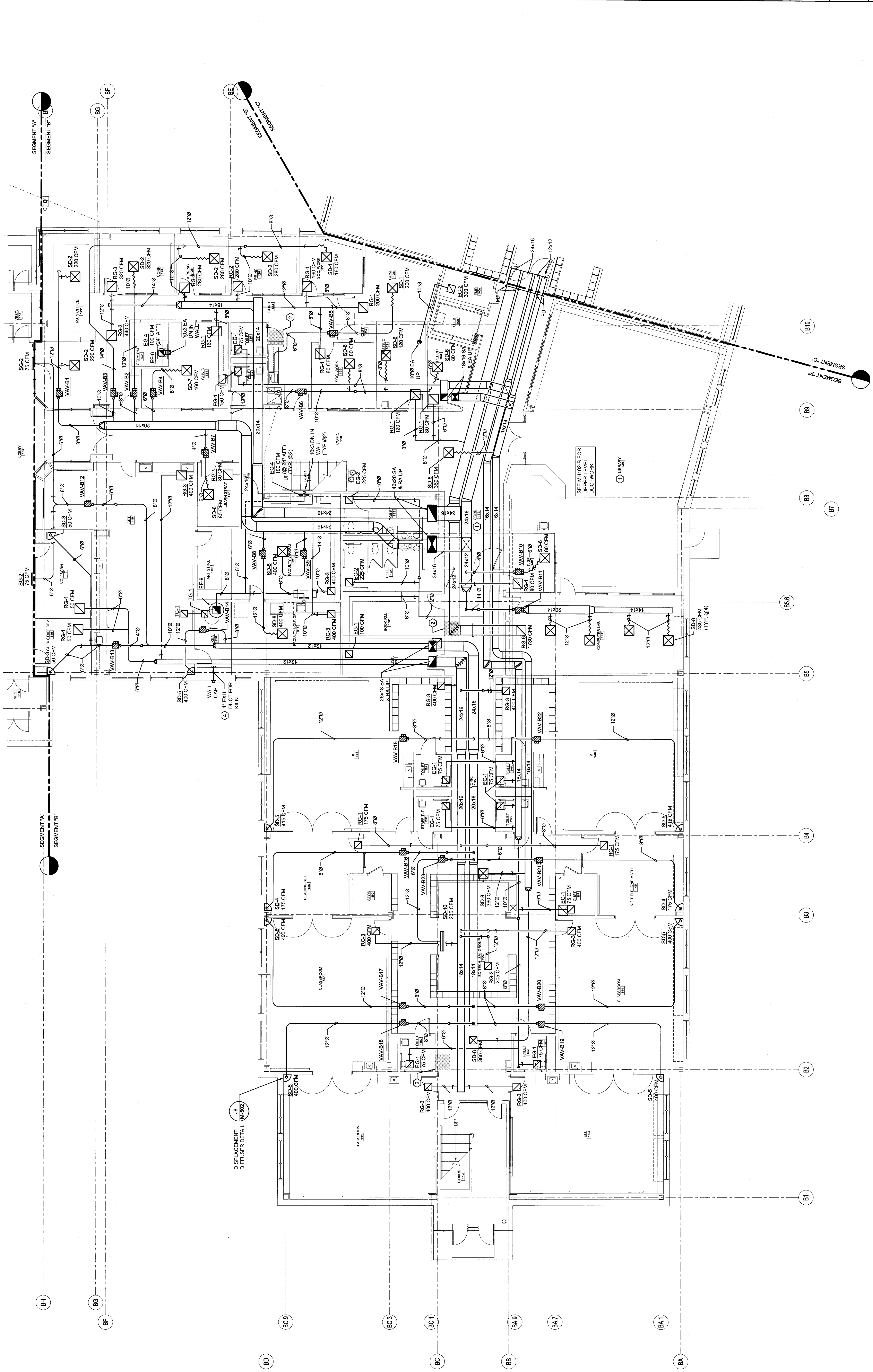
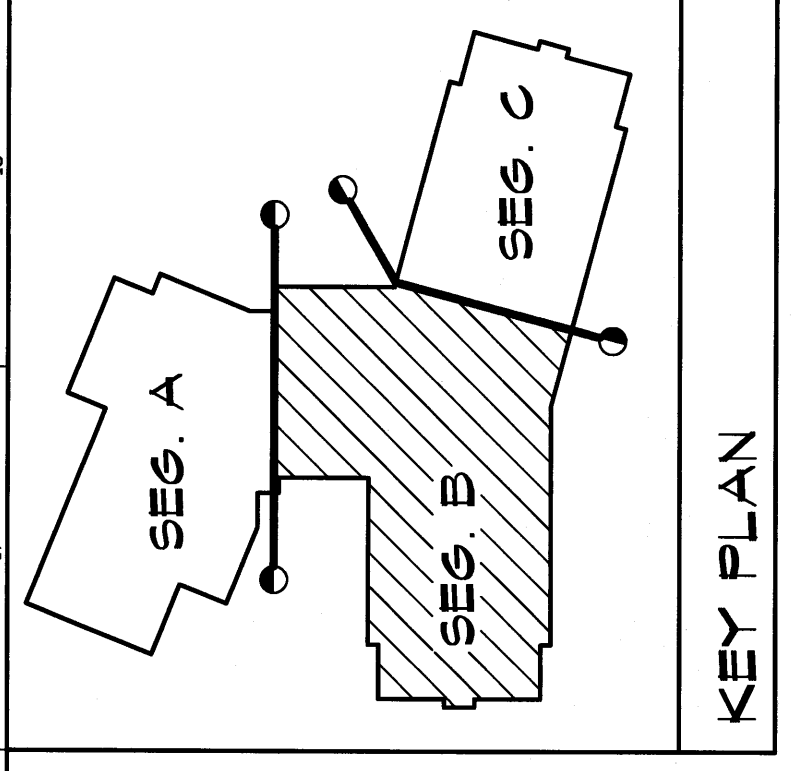


TECHNICAL NOTES:

- EXPOSED STRUCTURE, NO CEILING THIS PROJECT. ALL EXPOSED MECHANICAL DUCTWORK SHALL BE PAINTED TO MATCH THE EXISTING CEILING FINISH. REFER TO DIVISION 9 FOR PAINTING REQUIREMENTS.
- ELECTRICAL SPACE, NO DUCTWORK PERMITTED IN THIS AREA.
- ROOF MATCH, NO DUCTWORK PERMITTED IN THIS AREA.
- 4"Ø ALUMINUM EA DUCT PROVISION FOR UTILITIES. SHUTTLEWORTH KIT WITH INTEGRAL BLOWER 60-80 CFM, MAX. LENGTH 11'10" FEET AND MAX. (4) LONG SWEEP ELBOWS.



REV.	DESCRIPTION	DATE
0		08/20/09

PERMIT APPLICATION
SUBMISSION 3-18-09
CURRENT ISSUE STATUS:



WBRC
ARCHITECTS • ENGINEERS
WWW.WBRC.COM
100 WASHINGTON ST., SUITE 200
PORTLAND, ME 04101-4000
TEL: 603.761.1111 FAX: 603.761.1112

PROJECT
NORTH

OCEAN AVENUE ELEMENTARY
SCHOOL
PORTLAND, ME

FIRST FLOOR MECHANICAL
DUCTWORK PLAN - SEG. B

SHEET TITLE:	331610-MH101-B
PROJECT No.:	331610
SCALE:	1/8" = 1'-0"
PROJECT MANAGER:	MEJ
DRAWN BY:	CSB
CHECKED BY:	DNON
SHEET No.:	MH101-B