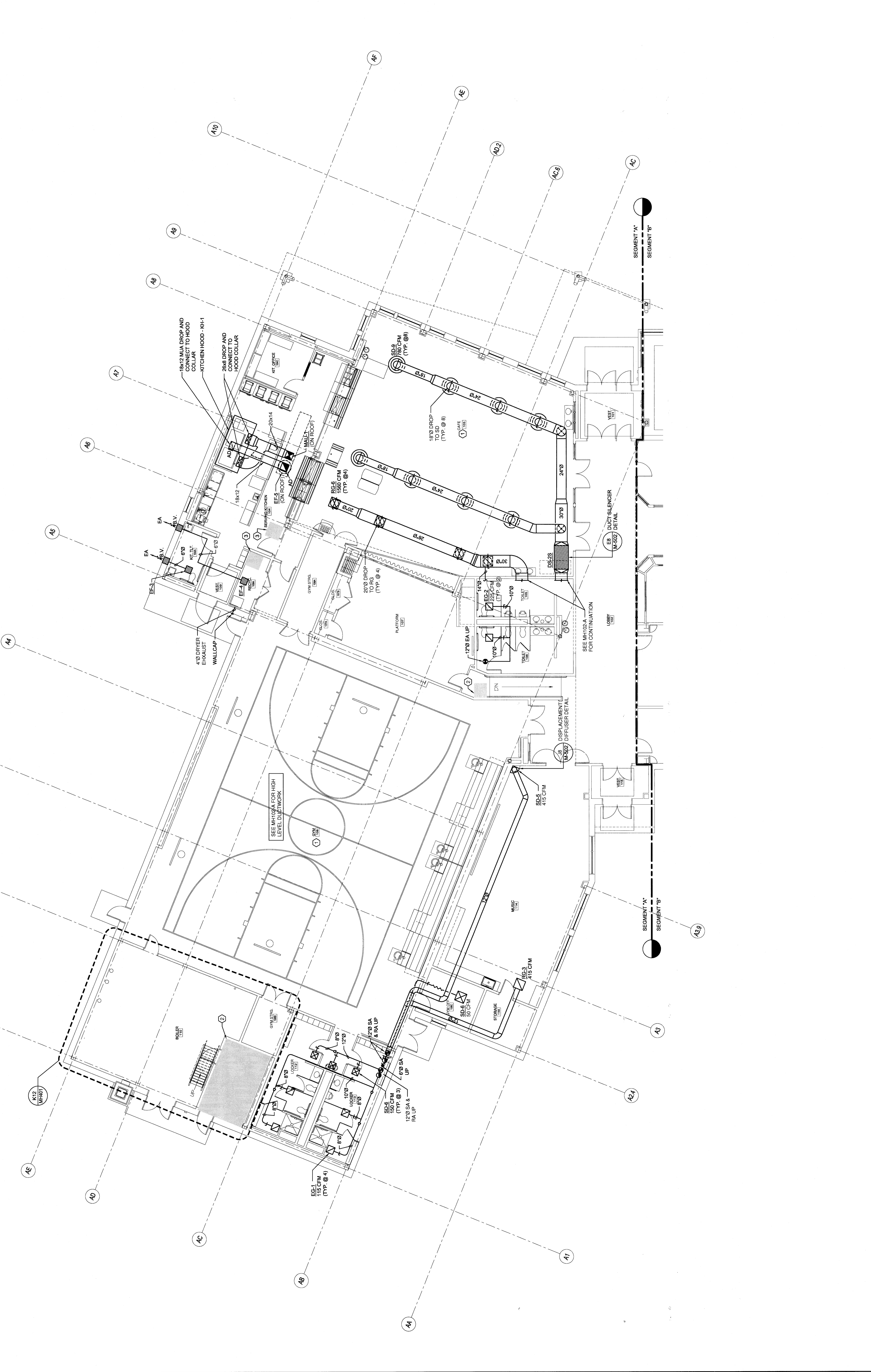
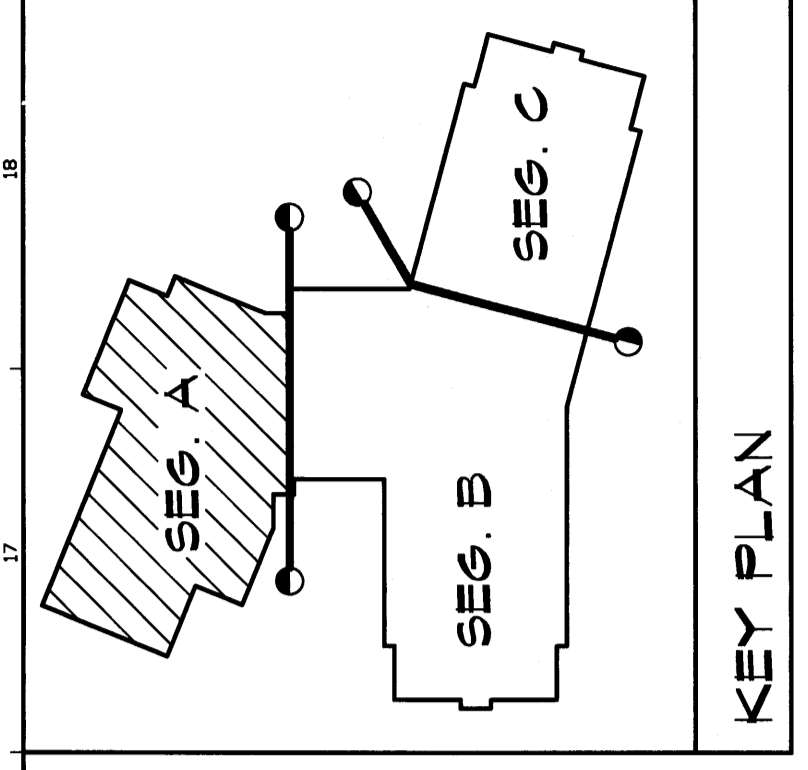


TECHNICAL NOTES:

- 1. ENGINEER STRUCTURES AND CEILING THIS AREA COORDINATE WITH ARCHITECT REFLECTED CEILING PLANS. INTENT IS EXPOSED UTILITIES. DUCTWORK SHALL HAVE FINISH PAINTING BY OTHERS REFER TO DIVISION 9.
- 2. ELECTRICAL SPACE. NO DUCTWORK PERMITTED IN THIS AREA.
- 3. ROOF HATCH. NO DUCTWORK PERMITTED IN THIS AREA.



PERMIT APPLICATION
SUBMISSION 3-18-09
 CURRENT ISSUE STATUS:



WBRC
 ARCHITECTS + ENGINEERS
 WWW.WBRCORC.COM
 100 WATER STREET, SUITE 200
 PORTLAND, ME 04101-3000
 PHONE: 603.761.1111
 FAX: 603.761.1112

OCEAN AVENUE ELEMENTARY SCHOOL
 PORTLAND, ME

FIRST FLOOR MECHANICAL DUCTWORK PLAN - SEG. A

SHEET No.	331810-MH101-A
SCALE	1/8" = 1'-0"
PROJECT MANAGER	MJC
DRAWN BY	CCB
CHECKED BY	DMCN
SHEET No.	MH101-A