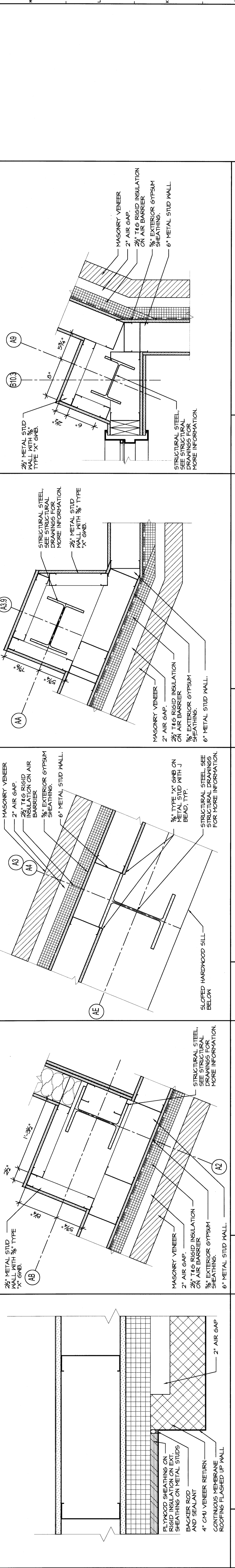
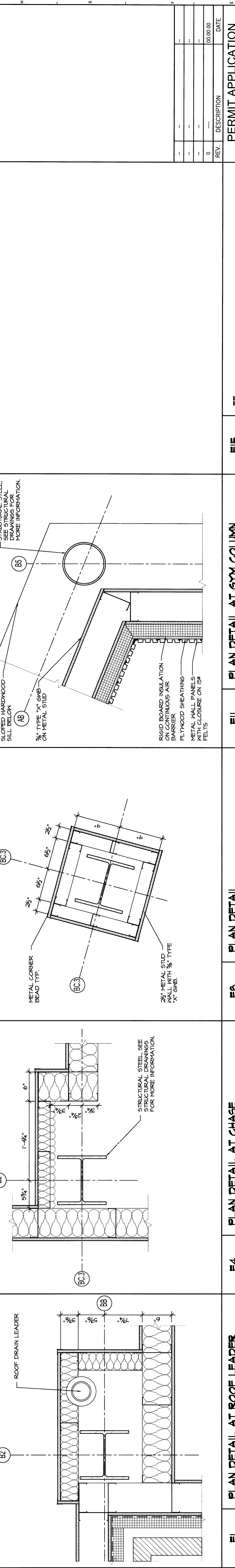


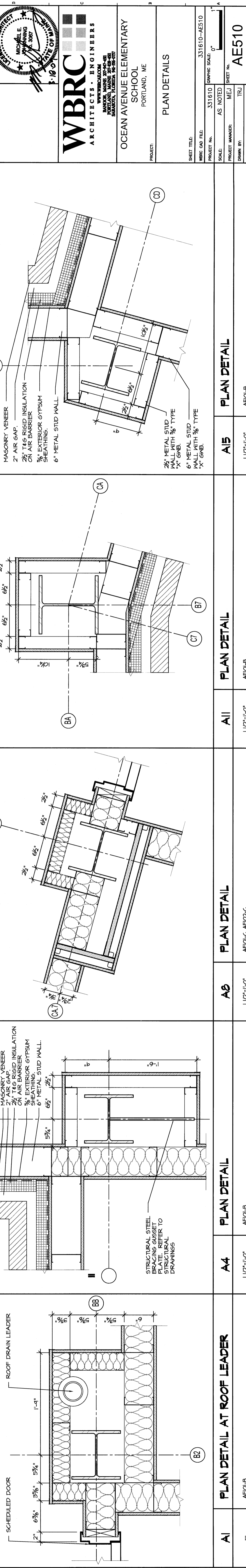
NI	3' - 1'-0"	AE201	BRICK RETURN DETAIL AT HIGH ROOF
N4	3' - 1'-0"	AE02-A	RETURN DETAIL AT HIGH ROOF
N8	1 1/2' - 1'-0"	AE02-C	PLAN DETAIL AT CHASE
NII	1 1/2' - 1'-0"	AE02-A	SOLAR COLLECTOR BRACKET DETAIL
N15	1 1/2' - 1'-0"	AE02-A	PLAN DETAIL AT HIGH ROOF
N16	1 1/2' - 1'-0"	AE01-A	PLAN DETAIL



JI	3' - 1'-0"	AE201	CMU RETURN AT ROOF MEMBRANE
J4	1 1/2' - 1'-0"	AE02-C	PLAN DETAIL AT LOCKER ROOM
J6	1 1/2' - 1'-0"	AE02-A	PLAN DETAIL AT GYM COLUMNS
JII	1 1/2' - 1'-0"	AE02-A	PLAN DETAIL
J15	1 1/2' - 1'-0"	AE01-A	PLAN DETAIL
J16	1 1/2' - 1'-0"	AE01-A	PLAN DETAIL



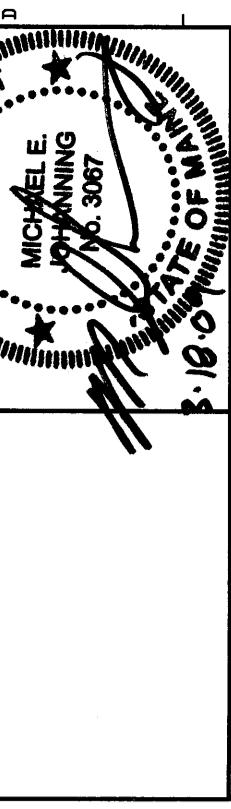
EI	1 1/2' - 1'-0"	AE02-B	PLAN DETAIL AT ROOF LEADER
E4	1 1/2' - 1'-0"	AE01-B	PLAN DETAIL AT CHASE
E6	1 1/2' - 1'-0"	AE02-C	PLAN DETAIL
EII	1 1/2' - 1'-0"	AE02-A	PLAN DETAIL AT GYM COLUMN
E15	1 1/2' - 1'-0"	--	PLAN DETAIL
E16	1 1/2' - 1'-0"	--	PLAN DETAIL



AI	--	AE01-B	PLAN DETAIL AT ROOF LEADER
A4	1 1/2' - 1'-0"	AE01-B	PLAN DETAIL
A6	1 1/2' - 1'-0"	AE01-C, AE02-C	PLAN DETAIL
AII	1 1/2' - 1'-0"	AE01-B	PLAN DETAIL
A15	1 1/2' - 1'-0"	AE01-B	PLAN DETAIL
A16	1 1/2' - 1'-0"	AE01-B	PLAN DETAIL

REV.	DESCRIPTION	DATE
0		00.00.00

PERMIT APPLICATION  
SUBMISSION 3-18-09  
CURRENT ISSUE STATUS:



**WBRC**  
ARCHITECTS & ENGINEERS  
1000 WASHINGTON ST.  
PORTLAND, ME 04101-2000

OCEAN AVENUE ELEMENTARY  
SCHOOL  
PORTLAND, ME

PLAN DETAILS	
SHEET TITLE:	331610 - AE10
SCALE:	AS NOTED
PROJECT MANAGER:	MEJ
DRAWN BY:	TRJ
CHECKED BY:	MEJ
PROJECT NO. 331610 - AE10	
SHEET NO. AE510	