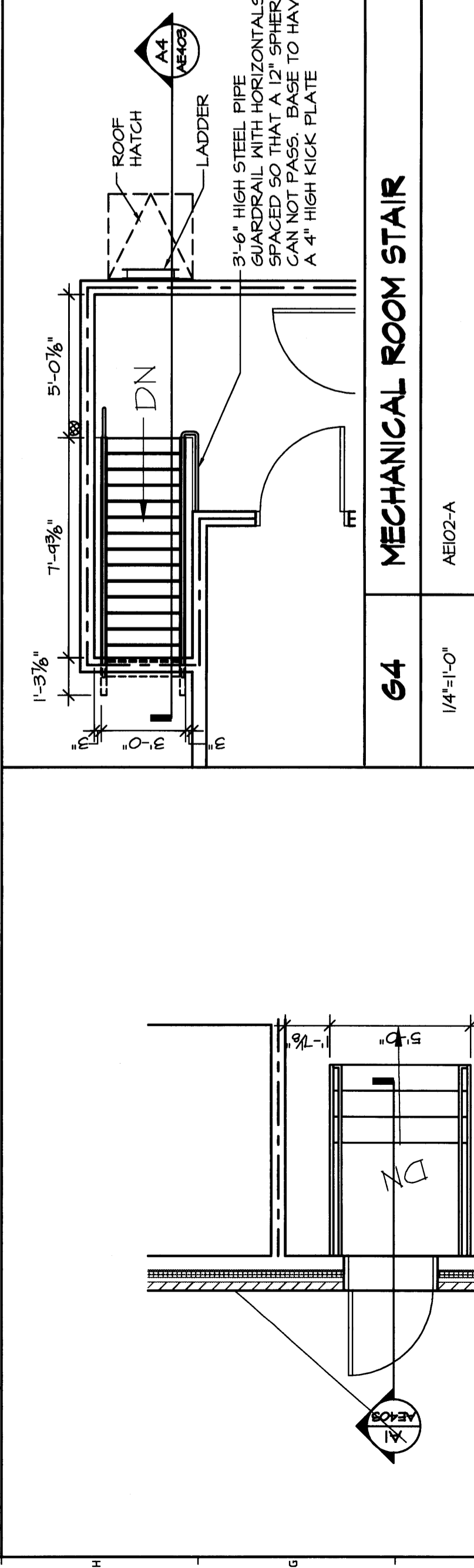
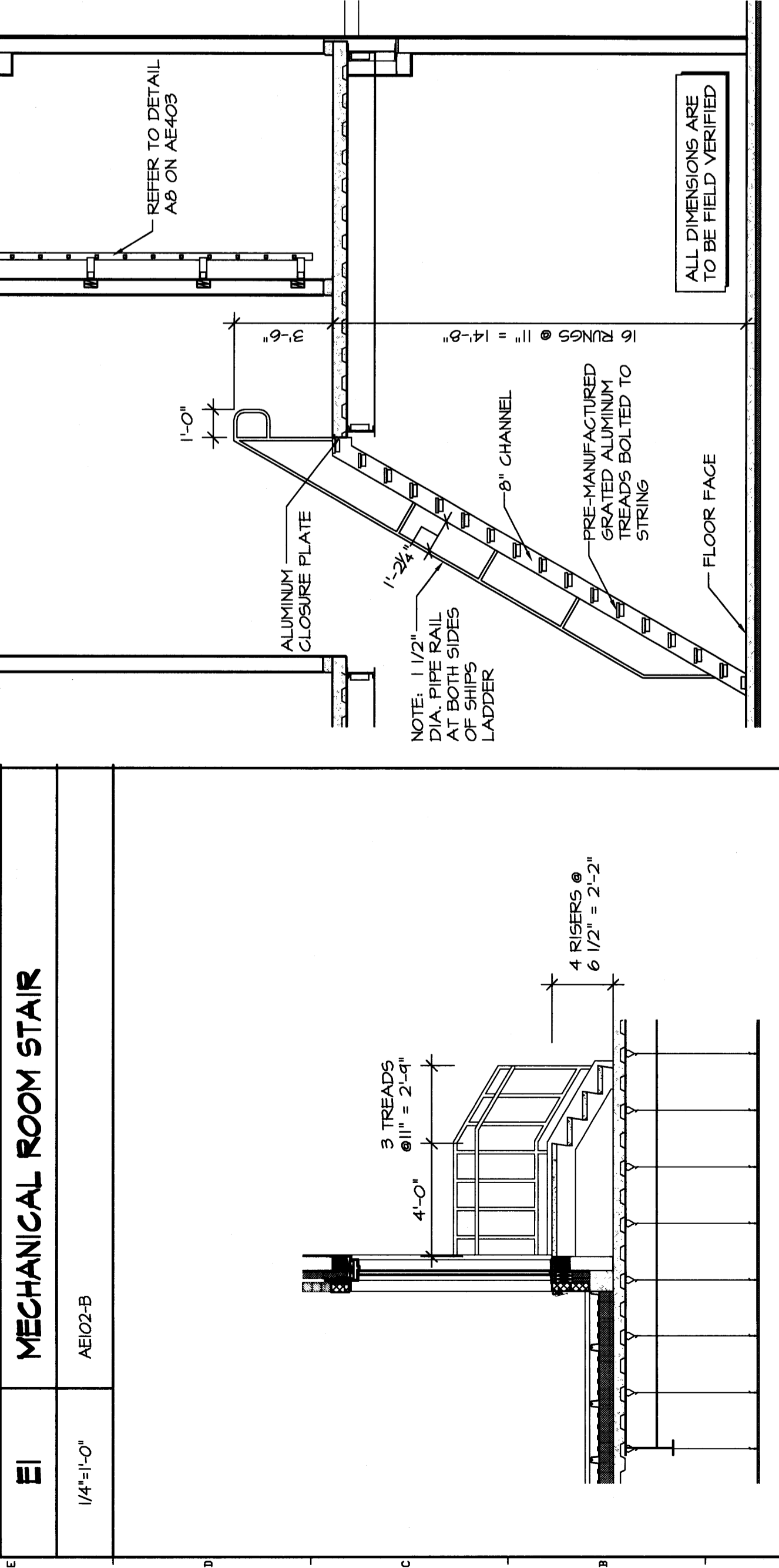


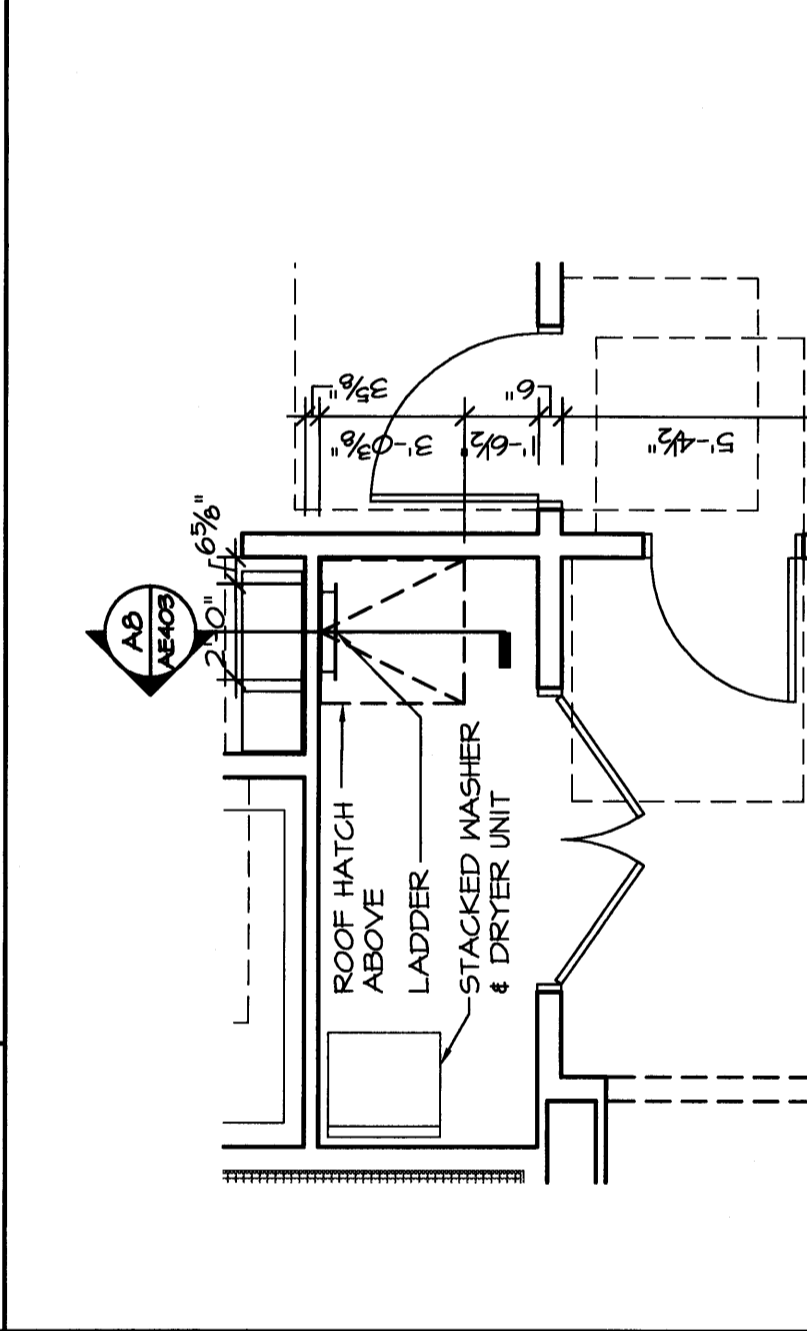
J1 ENLARGED ELEVATOR PLAN
 3/4"=1'-0" AE403



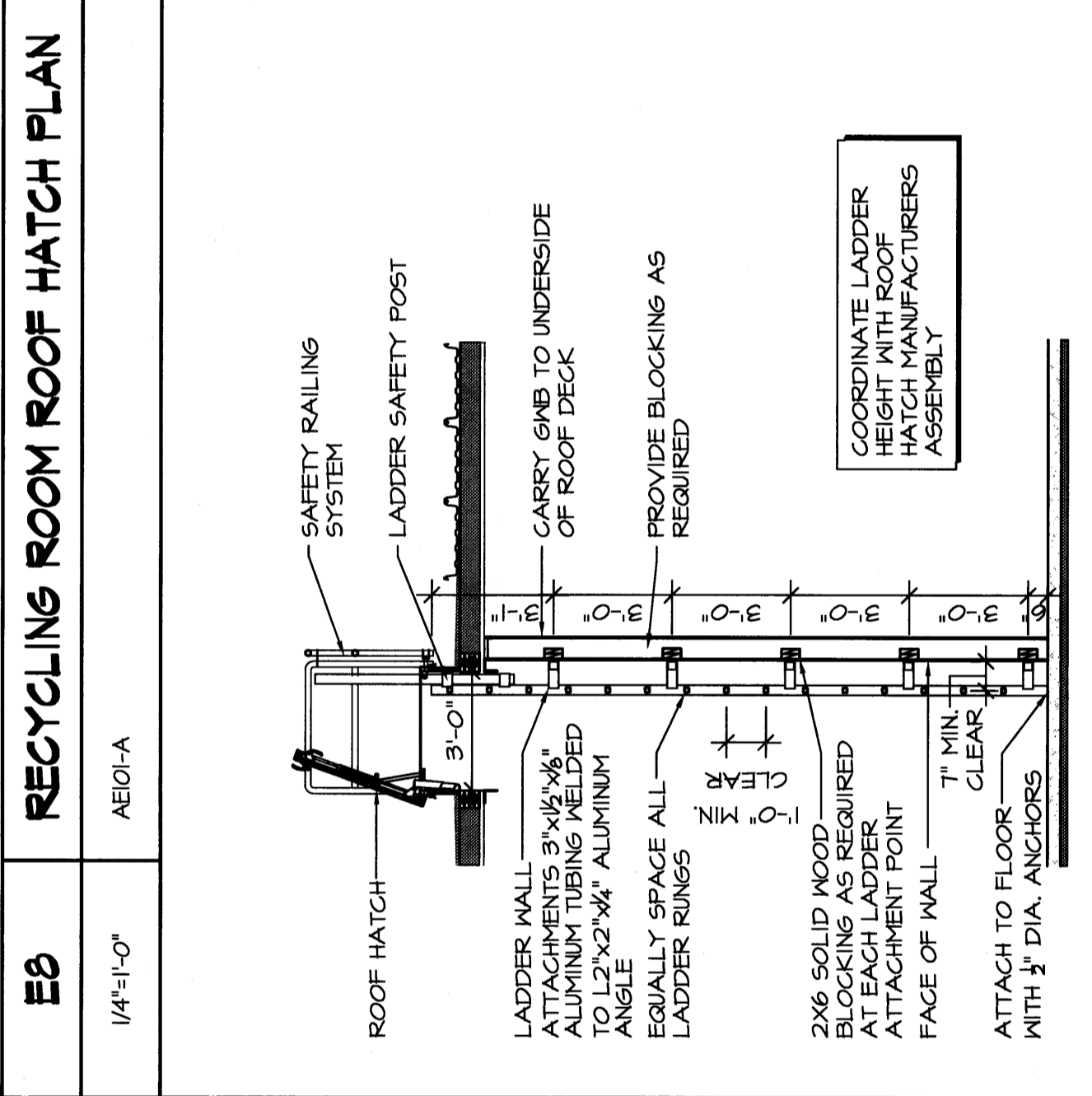
EI MECHANICAL ROOM STAIR
 1/4"=1'-0" AEI02-B



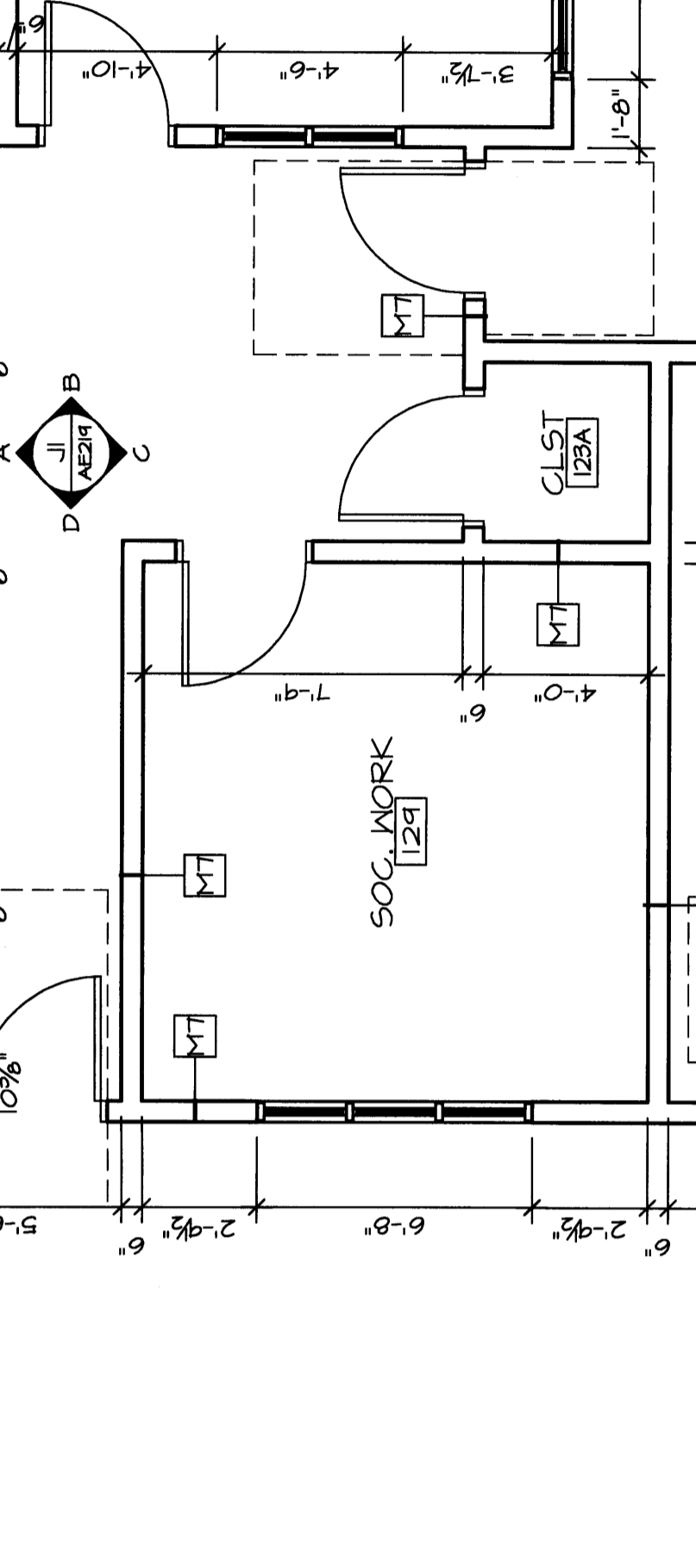
A4 SHIPS LADDER SECTION @ MECH. ROOM
 1/4"=1'-0"



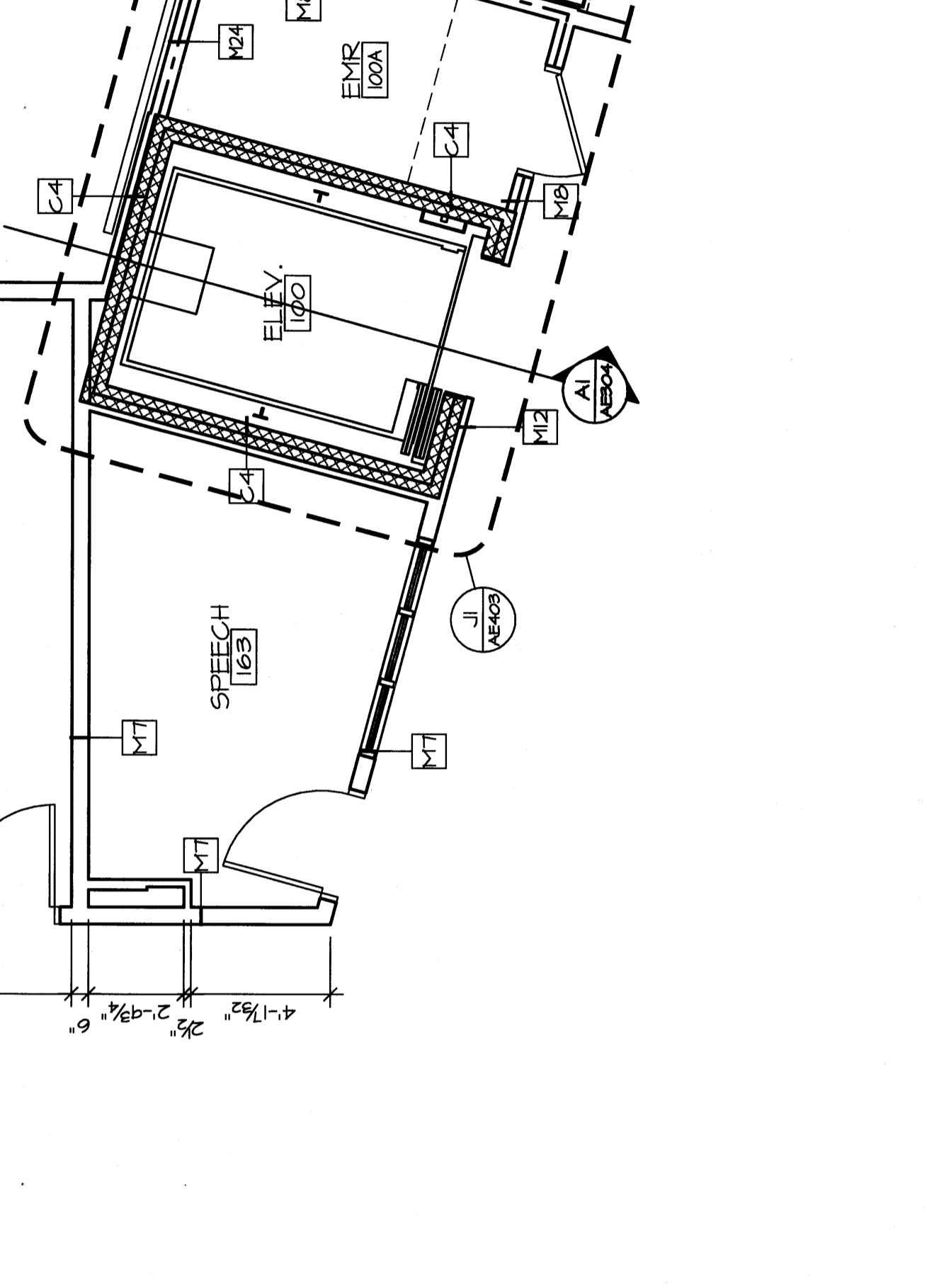
EI MECHANICAL ROOM STAIR
 1/4"=1'-0" AEI02-A



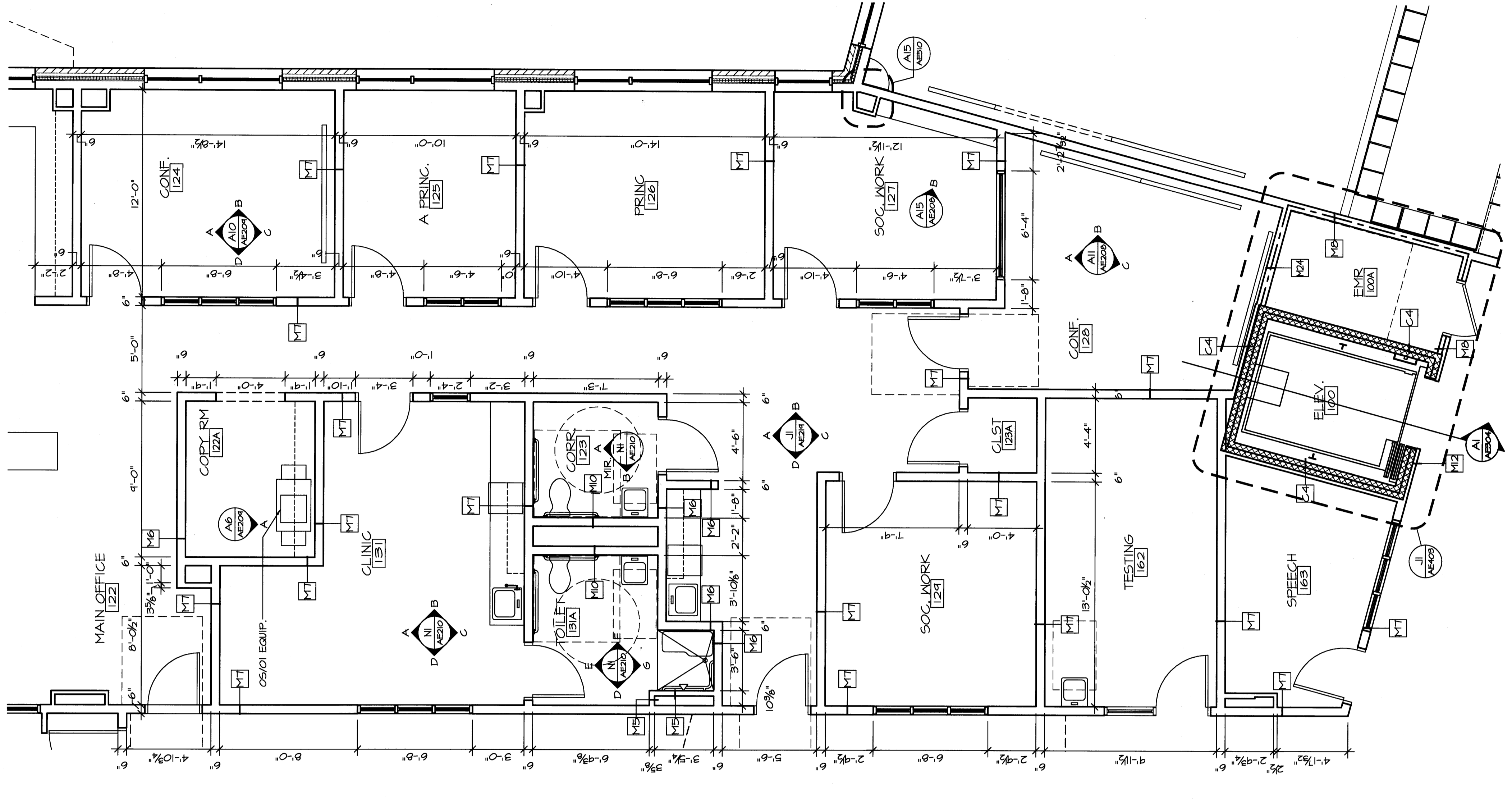
A4 SHIPS LADDER SECTION @ MECH. ROOM
 1/4"=1'-0"



JB RAMP SECTION
 1/4"=1'-0" AE402



EB RECYCLING ROOM ROOF HATCH PLAN
 1/4"=1'-0" AEI01-A



A11 OFFICE ENLARGED PLAN
 1/4"=1'-0" AEI01-B

REV.	DESCRIPTION	DATE
0		00.00.00

PERMIT APPLICATION
 SUBMISSION 3-18-09
 CURRENT ISSUE STATUS:

WBRC
 ARCHITECTS - ENGINEERS
 1000 WASHINGTON ST. 4TH FLOOR
 PORTLAND, ME 04101-2001
 5-18-07

OCEAN AVENUE ELEMENTARY SCHOOL
 PORTLAND, ME

ENLARGED FLOOR PLANS

SHEET TITLE: 331610 DRAWING SCALE: C
 PROJECT NO.: 331610-AE403
 SCALE: AS NOTED
 PROJECT MANAGER: MEJ
 SHEET NO.: AE403
 DRAWN BY: KAM
 CHECKED BY: MEJ