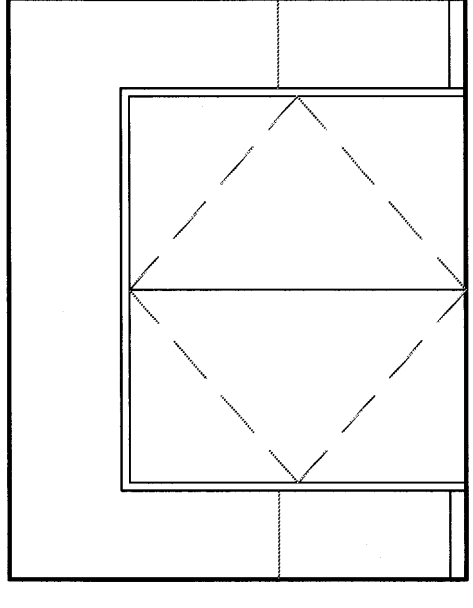
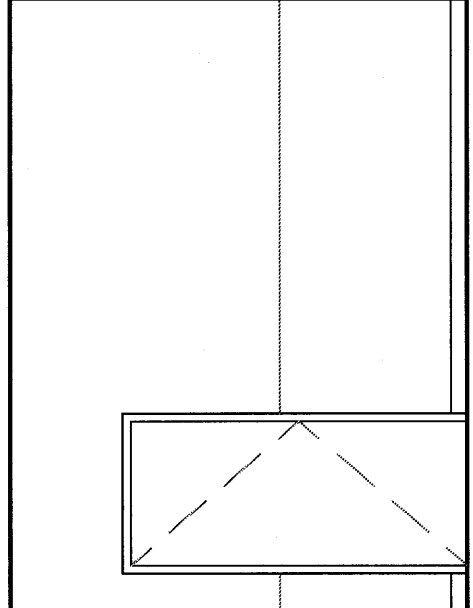


GENERAL INTERIOR ELEVATIONS NOTES:

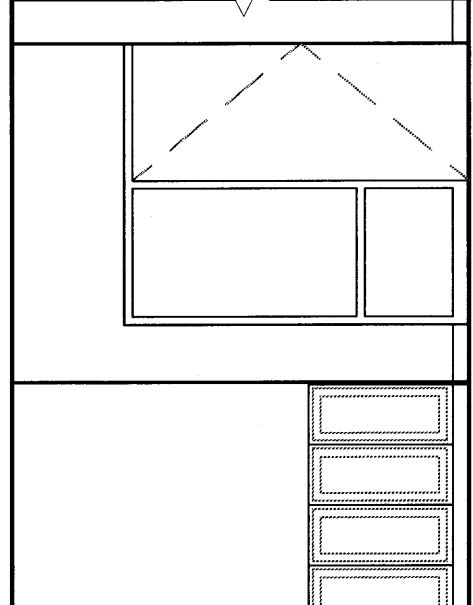
1. REFER TO ARCHITECTURAL ABBREVIATIONS ON SHEET 01665 FOR ALL ABBREVIATIONS
2. REFER TO K1/AE035 FOR TYPICAL TOILET (LEGEND) AND MOUNTING HEIGHT INFORMATION.
3. G.C. SHALL PROVIDE AND INSTALL BLOCKING, STIFFENERS, BACKING PLATES AND SUPPORTING BRACKETS FOR THE PROPER INSTALLATION OF ALL CABINETRY. ALL CABINETRY SHALL BE FINISHED WITH SUPPLIED TOILET ACCESSORIES, VISUAL DISPLAY UNITS AND MISCELLANEOUS EQUIPMENT WHETHER SUCH SUPPORTS ARE SHOWN OR NOT. G.C. TO COORDINATE ALL CABINETRY WITH THE OWNER.
4. REFER TO AEM1 FOR ALL DOOR TYPES, STYLE AND FRAME STYLES.
5. ALL EQUIPMENT, CASEWORK, ETC TO BE CSO1.
6. REFER TO DIVISION 4 SPECIFICATIONS FOR DETAILED INFORMATION RELATED TO MILLWORK WOOD CABINETS.
7. CABINETS SHOWN TO ILLUSTRATE INTENT. IT IS THE RESPONSIBILITY OF THE SUPPLIER TO ENSURE ALL CABINET DOORS AND DRAWERS OPEN TO THEIR HARDWARE, WITHOUT INTERFERENCE SUCH AS HARDWARE.
8. ALL FILLER PANELS AND FINISHED END PANELS TO MATCH WOOD CABINETS IN SPECIES AND FINISH.
9. "CJ" DENOTES GWB CONTROL JOINT LOCATIONS.
10. "CG" DENOTES CORNER GUARD LOCATIONS.
11. AGFIBER PANELS GRAPHICALLY INDICATE DIRECTION OF GRAIN EITHER HORIZONTALLY OR



(C)



(E)

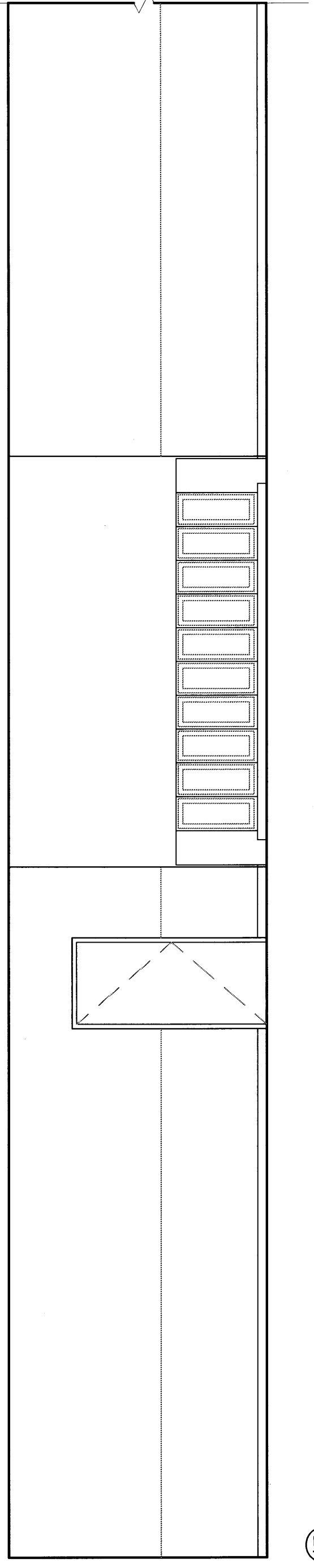


(A)

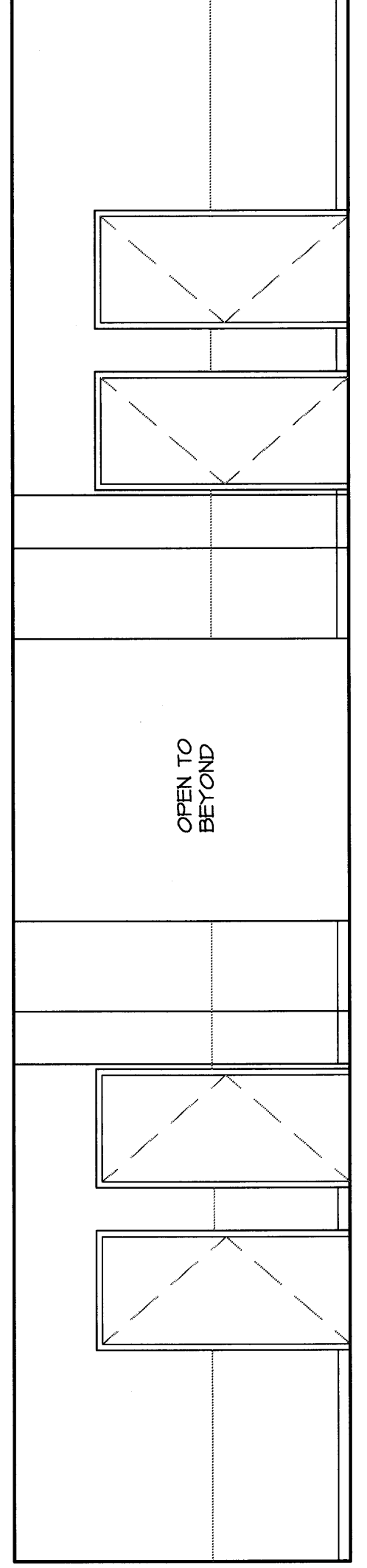
LOCKERS, TYP.

ELECTRICAL PANEL, REFER TO ELECTRICAL DRAWINGS

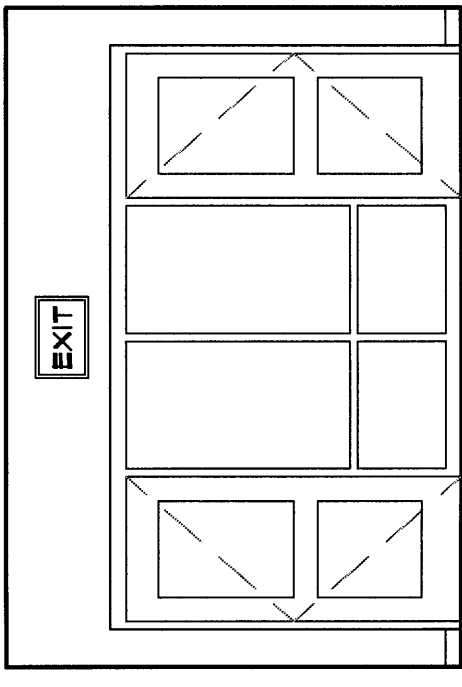
G1 MAIN, TYP. SEE MAIN FLOOR FOR MORE INFO.



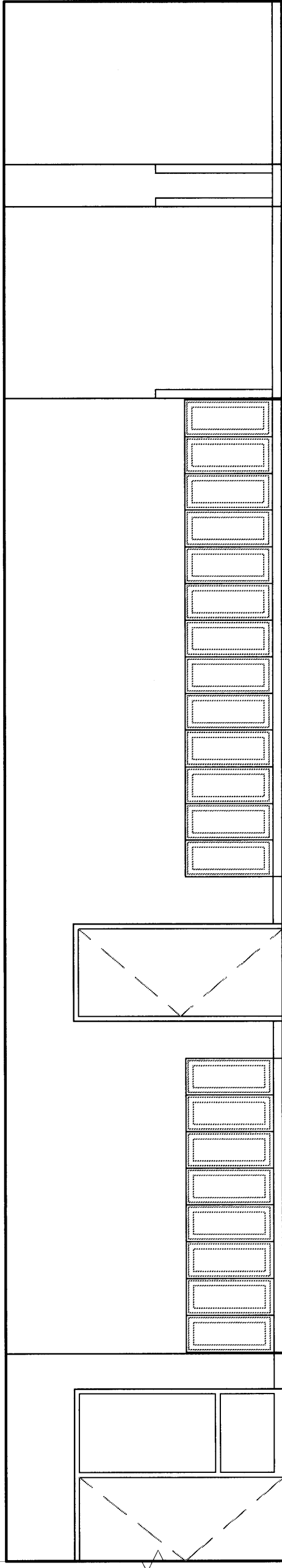
(E)



(D)



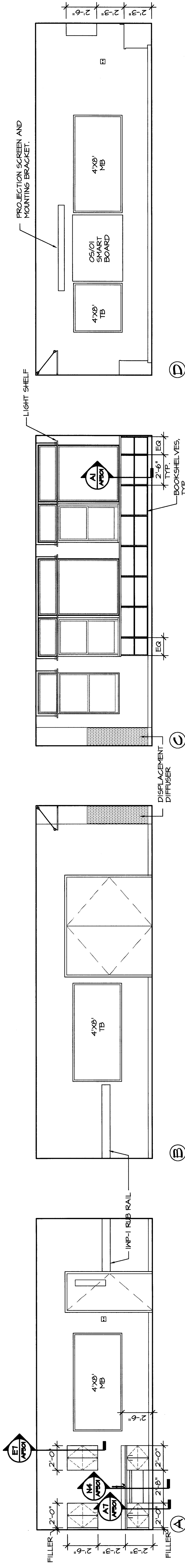
(S)



(F)

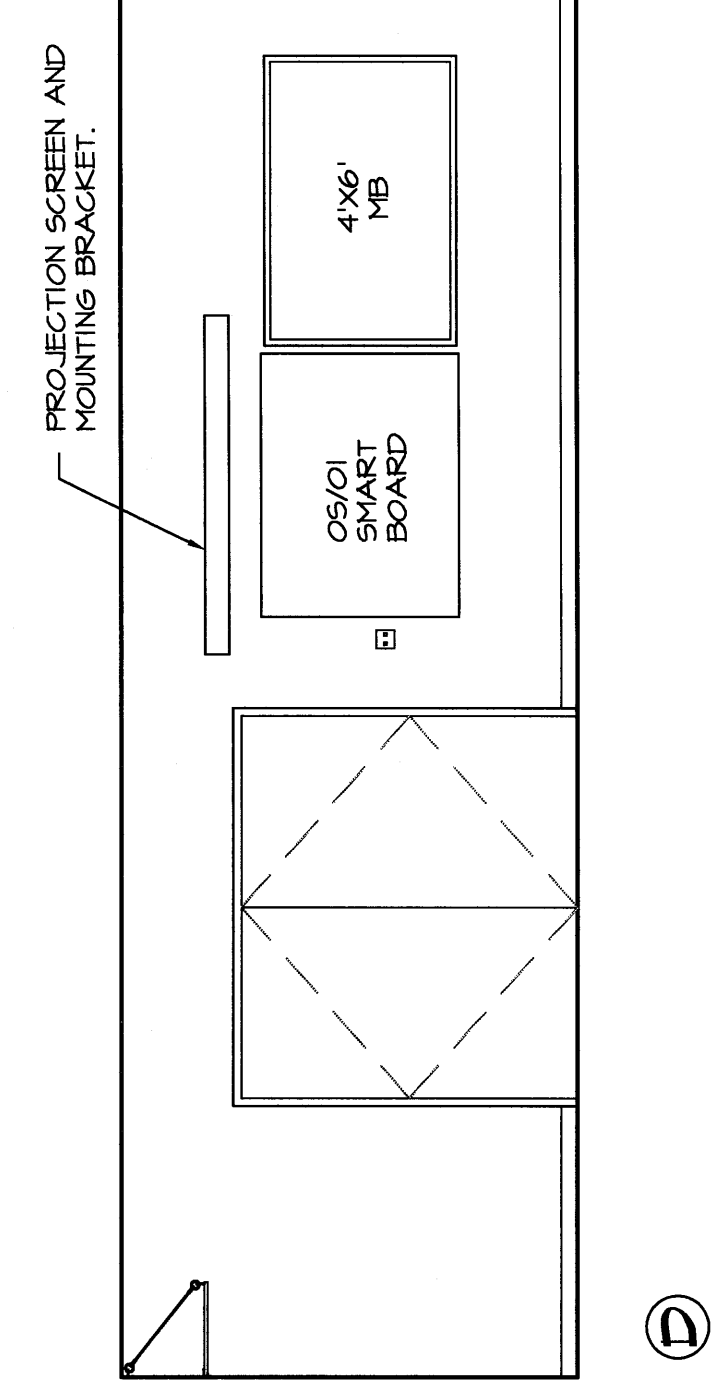
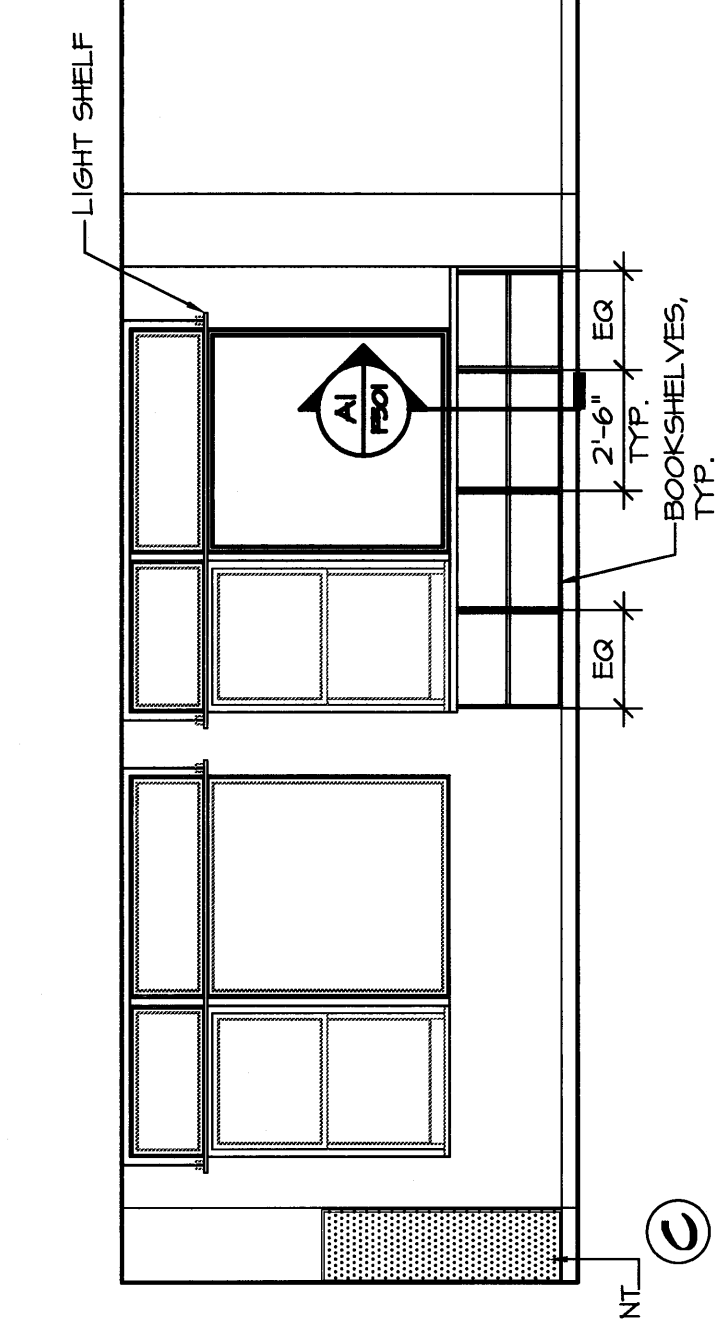
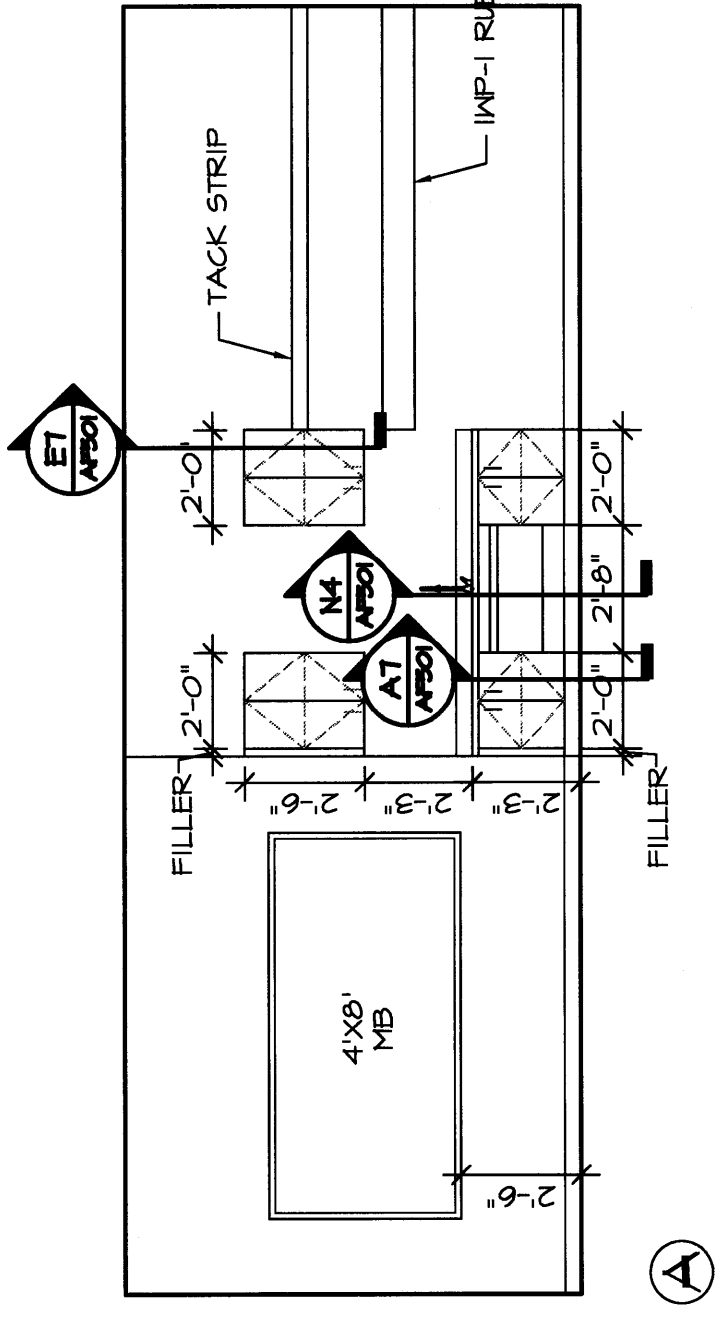
**|| CORRIDOR #204**

1/4"=1'-0" AE02-B



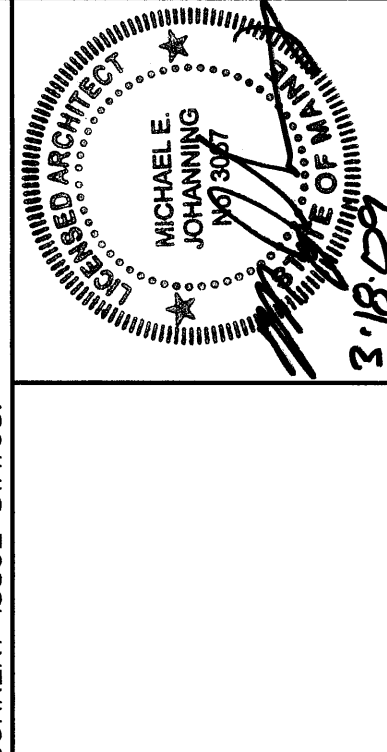
**EI CLASSROOM #215**

1/4"=1'-0" AE02-C



REV.	DESCRIPTION	DATE
0		00.00.00

PERMIT APPLICATION  
SUBMISSION 3-18-09  
CURRENT ISSUE STATUS:



**WBRC**  
ARCHITECTS & ENGINEERS  
MANOR MANE 100-45  
AVENUE  
ANNAPOLIS, MARYLAND 21403

OCEAN AVENUE ELEMENTARY  
SCHOOL  
PORTLAND, ME

INTERIOR ELEVATIONS

SHEET TITLE	331610-AE217
PROJECT NO.	331610
SCALE	AS NOTED
PROJECT MANAGER	MEJ
DRAWN BY	JLR/RAD
CHECKED BY	MEJ
SHEET NO.	AE217