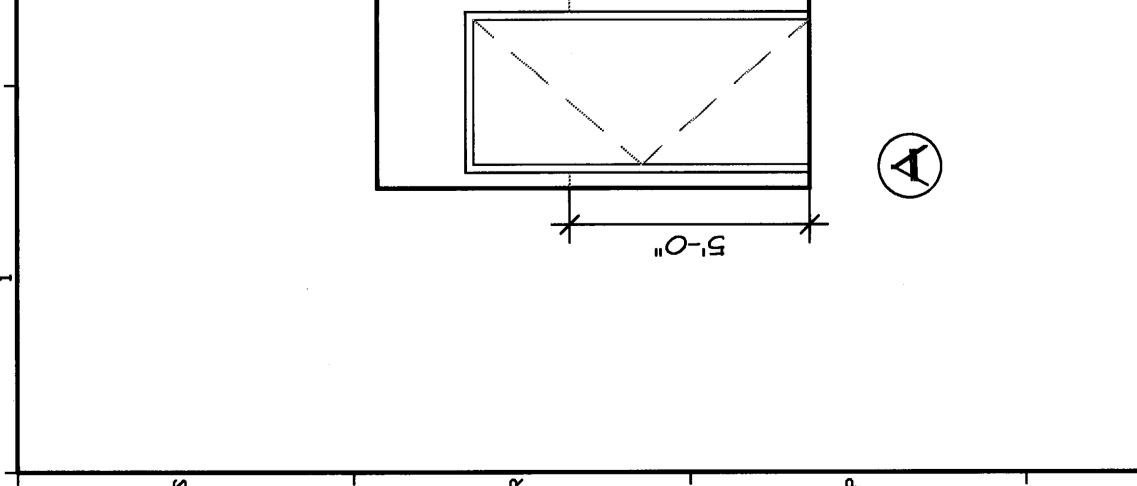
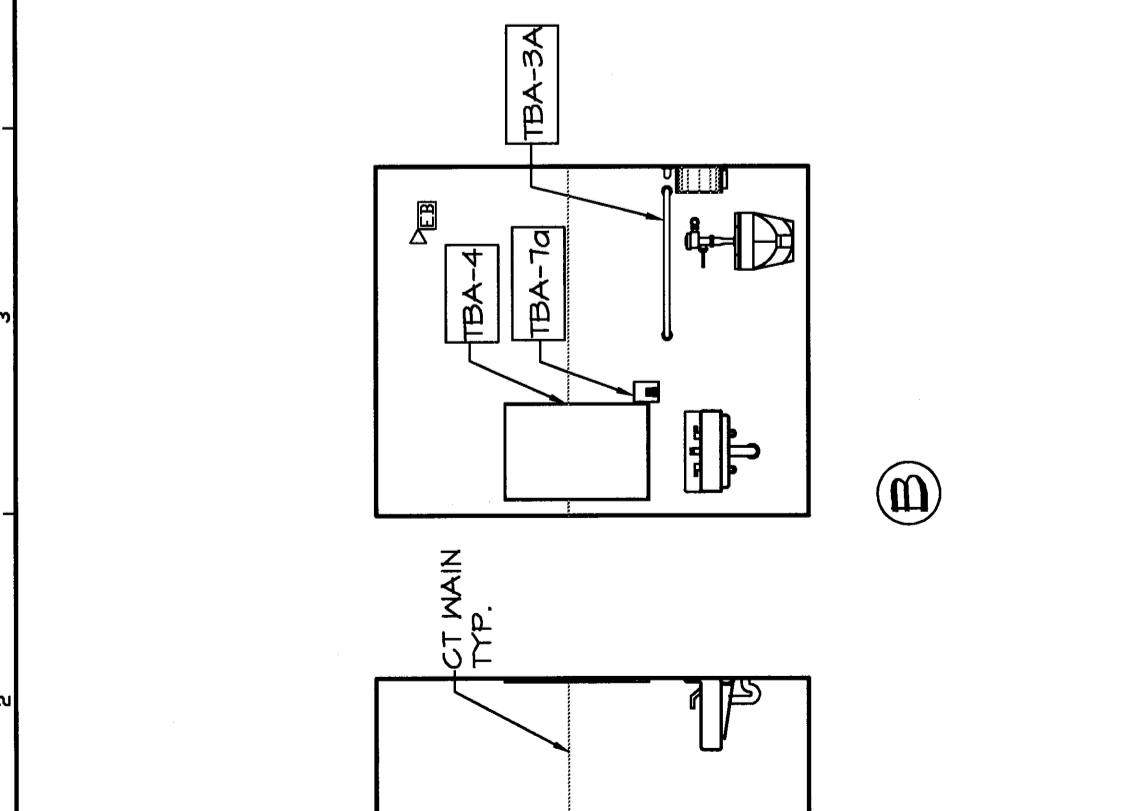
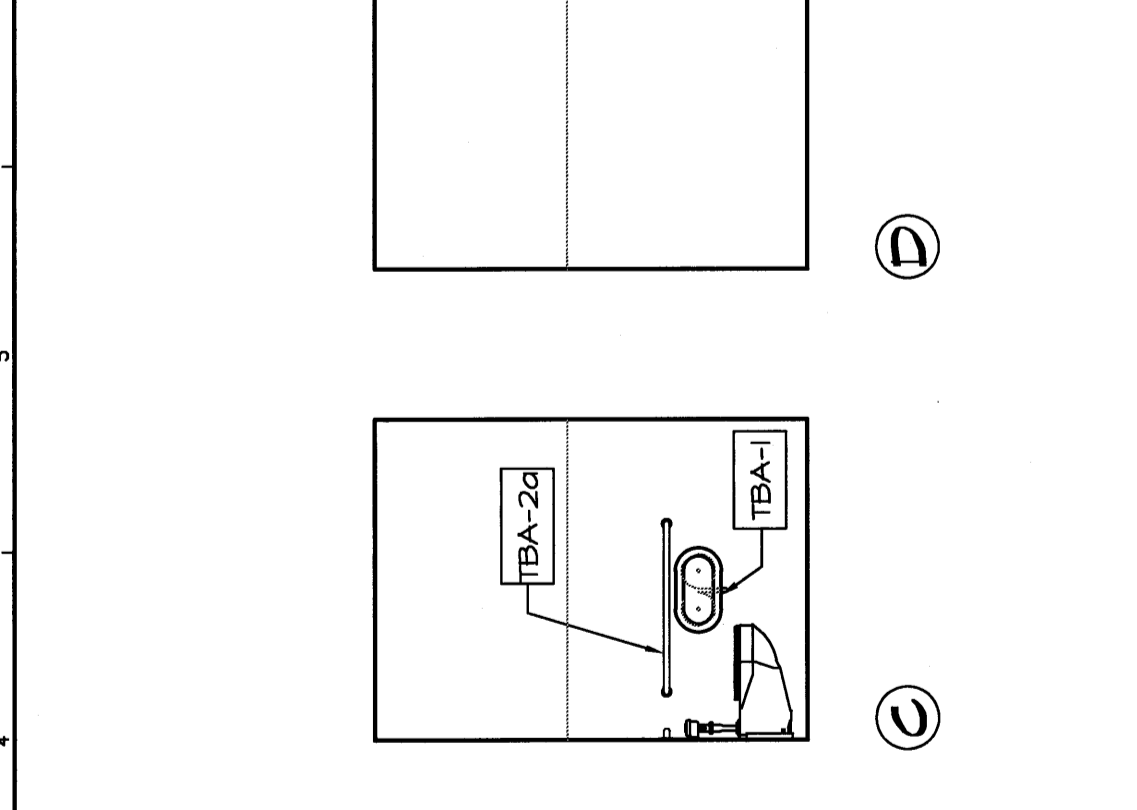
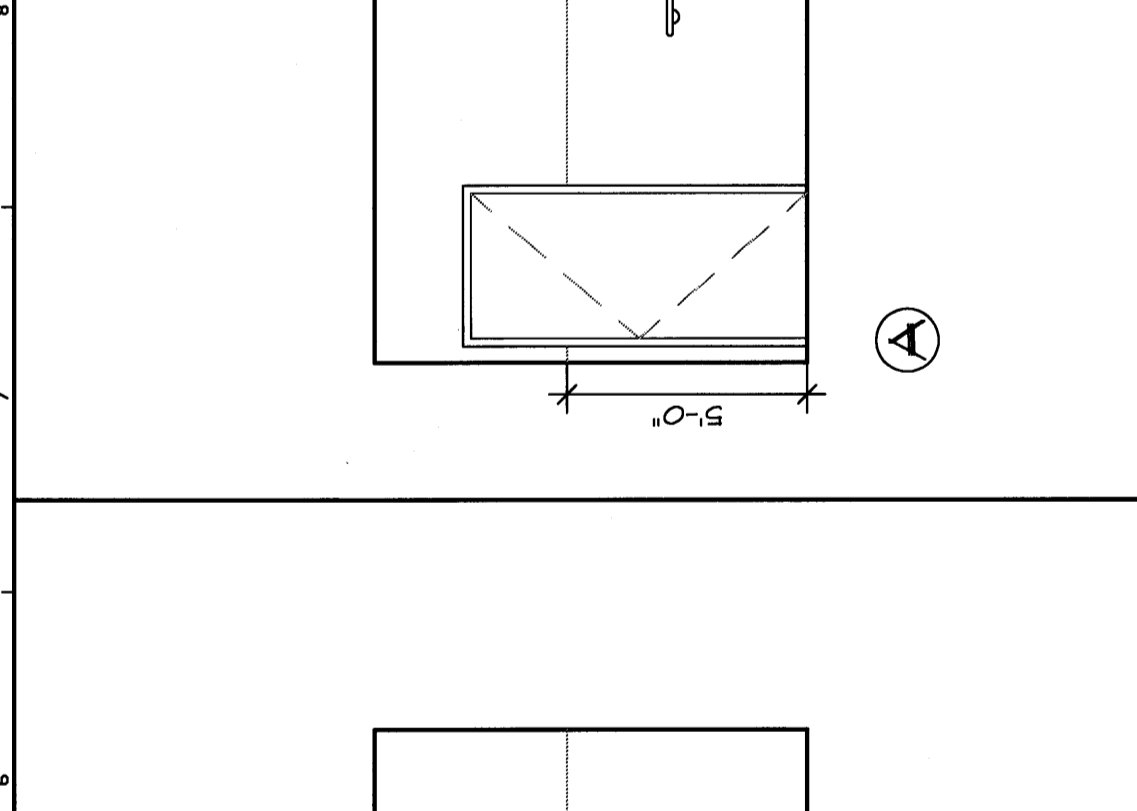
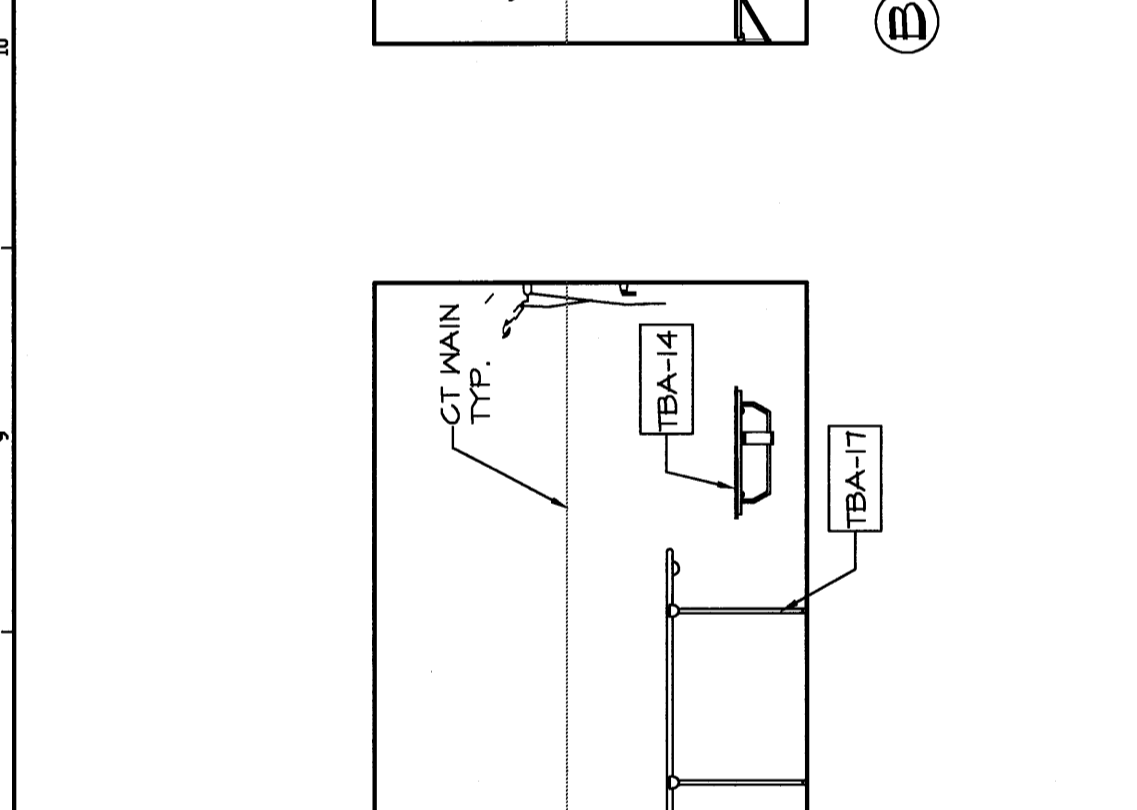
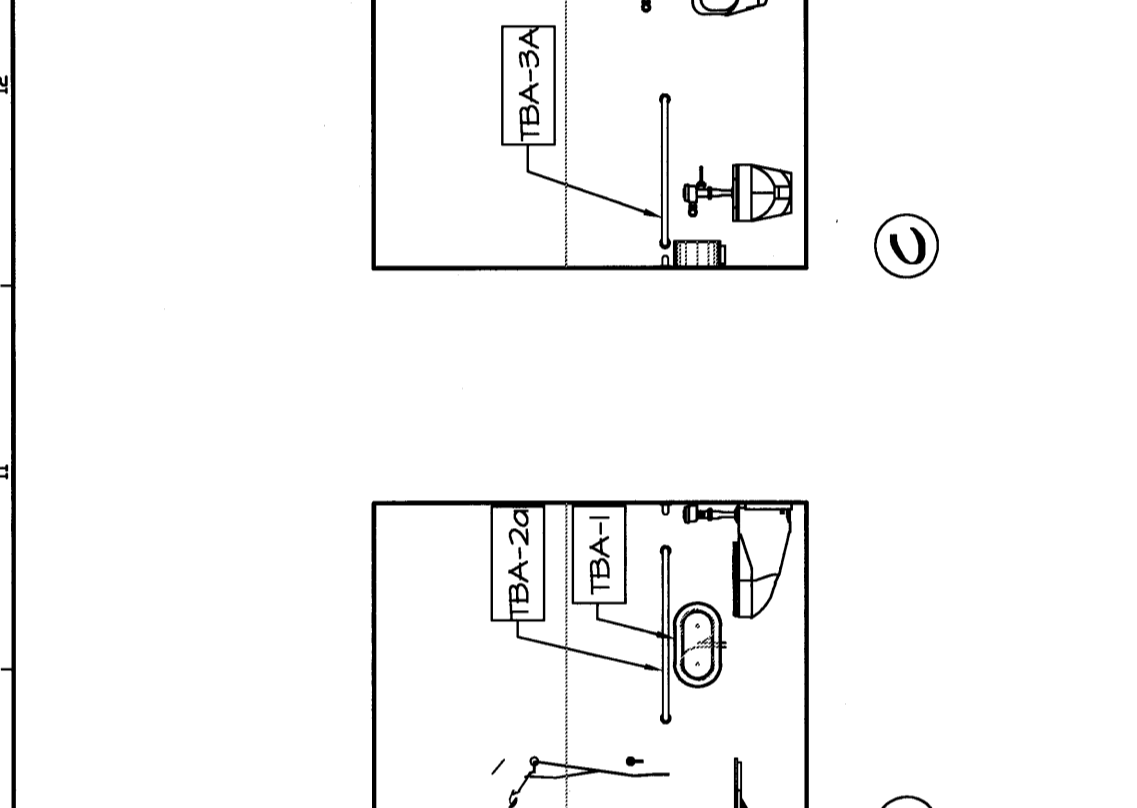
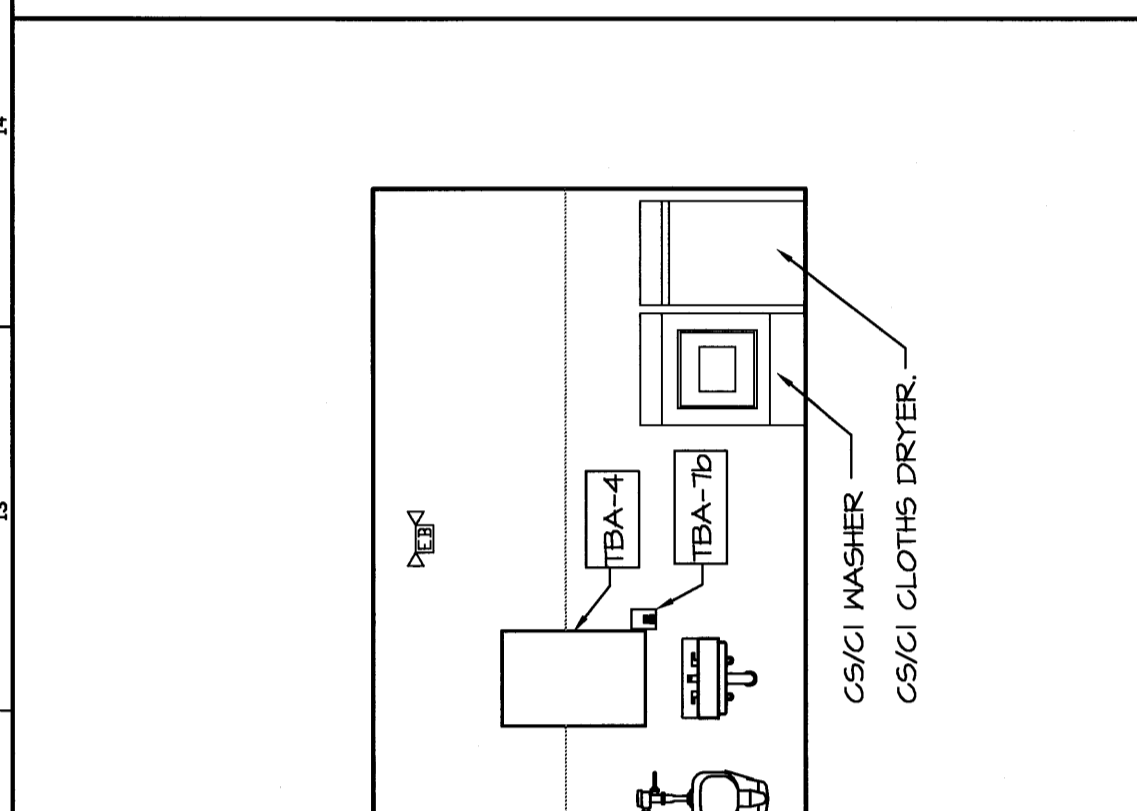
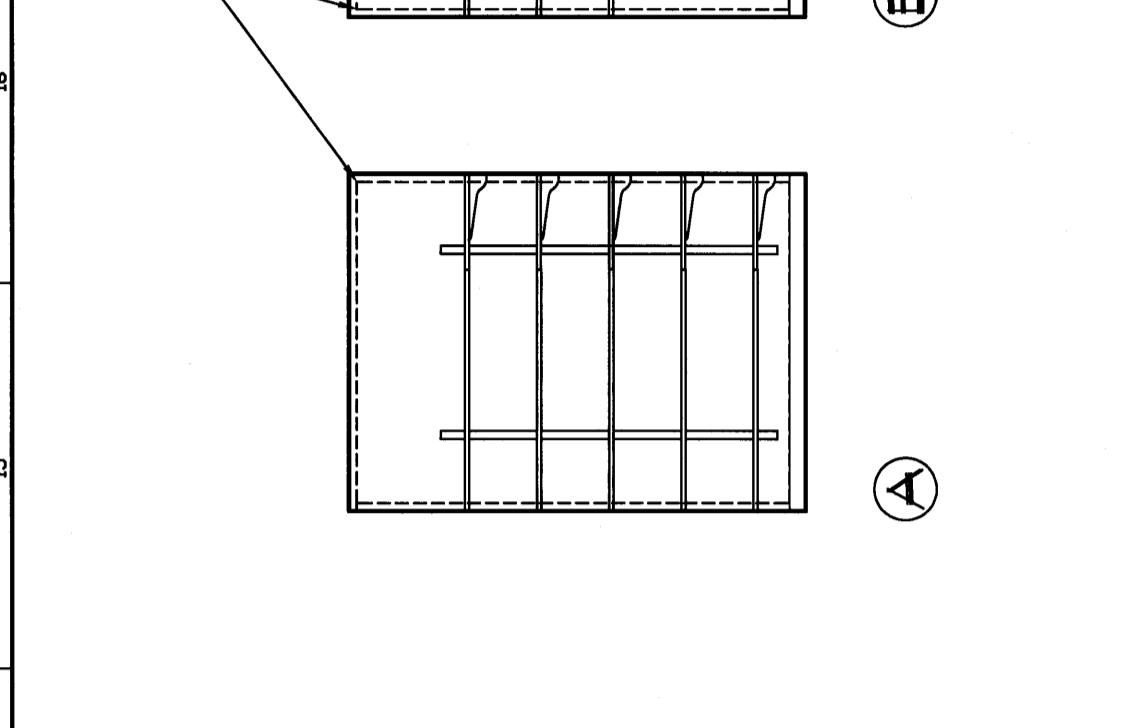
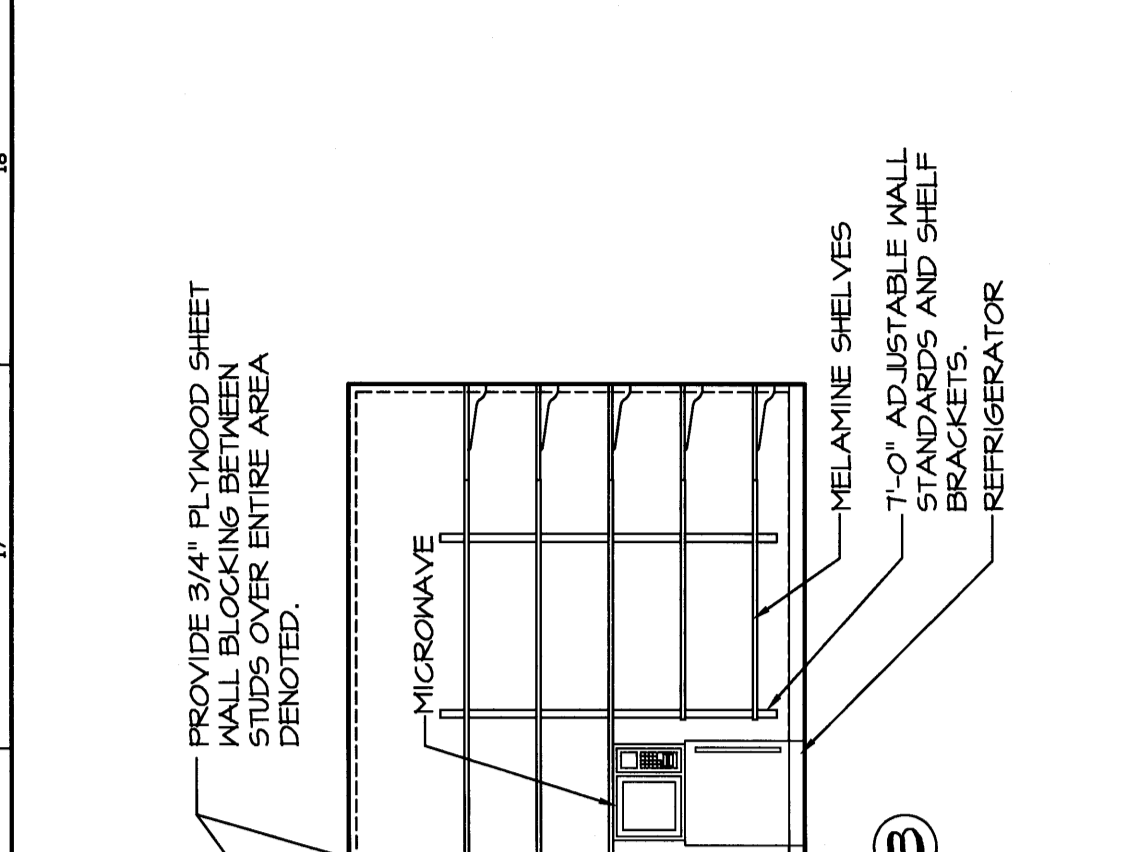
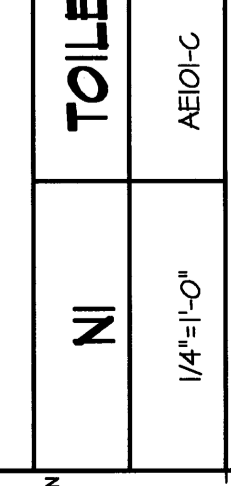
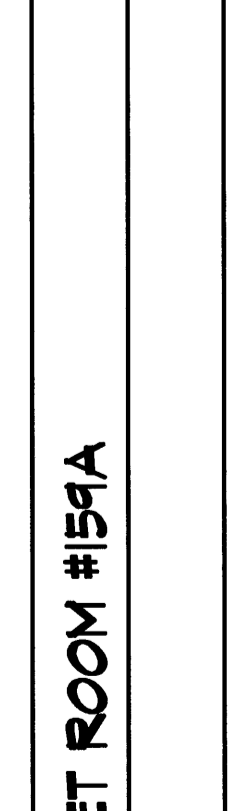
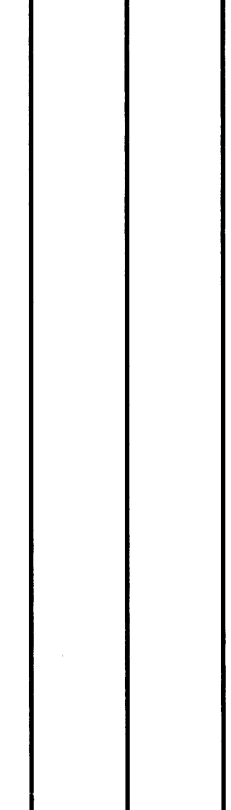
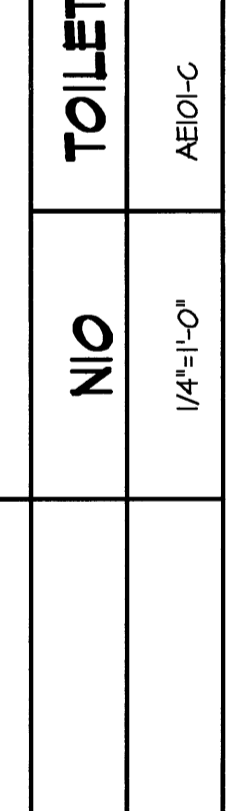
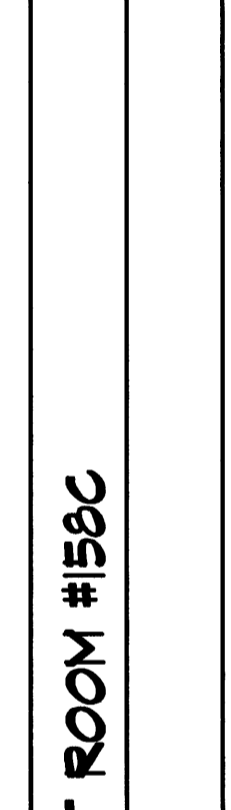
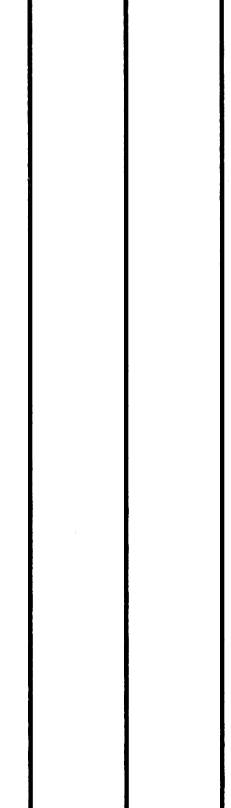
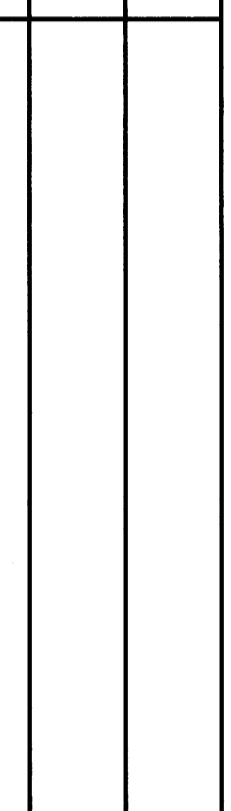
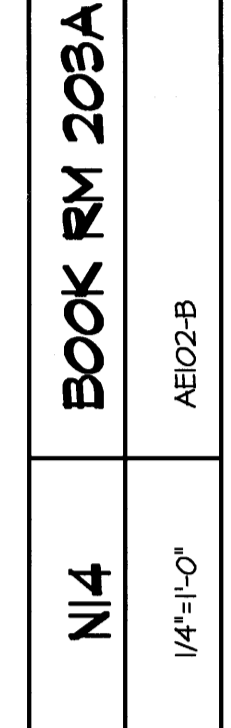
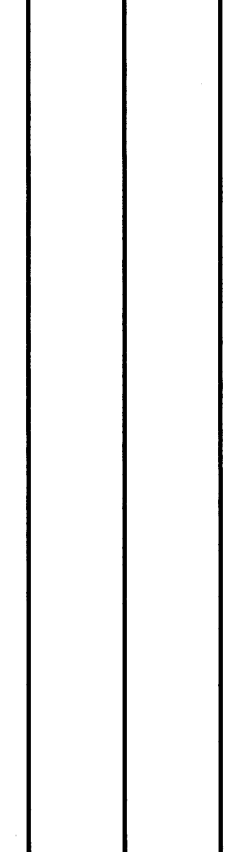


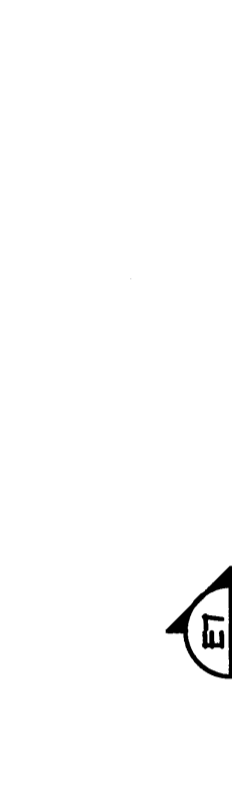
- GENERAL INTERIOR ELEVATIONS NOTES:**
1. REFER TO ARCHITECTURAL ABBREVIATIONS ON SHEET 0102 FOR ALL ABBREVIATIONS
  2. REFER TO K/M/ZZS FOR TYPICAL TOILET AND BATH LEGEND AND MOUNTING HEIGHT INFORMATION
  3. O.C. SHALL PROVIDE AND INSTALL BLOCKING STIFFENERS, BACKING PLATES AND SUPPORTING BRACKETS FOR THE PROPER INSTALLATION OF ALL SURFACES AND FINISHES. ALL FINISHES SHALL BE APPLIED TO ACCESSORIES, UNLESS OTHERWISE SHOWN OR NOTED. O.C. TO SUCH SUPPORTS ARE SHOWN OR NOTED. O.C. TO SUPPLIED ITEMS WITH THE OWNER.
  4. REFER TO AEO01 FOR ALL DOOR TYPES, STYLE AND FRAME STYLES.
  5. ALL EQUIPMENT, CASEWORK, ETC TO BE CSCI, UNLESS NOTED OTHERWISE.
  6. REFER TO DIVISION SPECIFICATION FOR DETAILED INFORMATION RELATED TO MILLWORK/WOOD CABINETS.
  7. CABINETS SHOWN TO ILLUSTRATE INTENT. IT IS THE RESPONSIBILITY OF THE SUPPLIER TO ENSURE ALL CABINET DOORS AND DRAWERS OPEN TO THEIR FULL EXTENT WITHOUT INTERFERENCE SUCH AS HARDWARE.
  8. ALL FILLER PANELS AND FINISHED END PANELS TO MATCH WOOD CABINETS IN SPECIES AND FINISH.
  9. "CJ" DENOTES GWB CONTROL JOINT LOCATIONS.
  10. "CG" DENOTES CORNER GUARD LOCATIONS.
  11. ARCHER PANELS GRAPHICALLY INDICATE DIRECTION OF GRAIN EITHER HORIZONTALLY OR VERTICALLY. REFER TO SPECIFICATIONS FOR GRAIN DIRECTION NOT SHOWN.



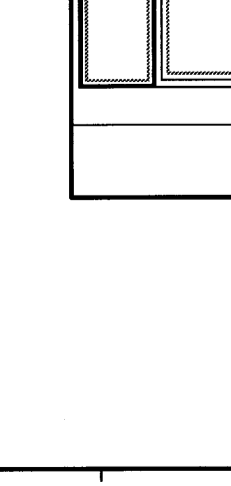
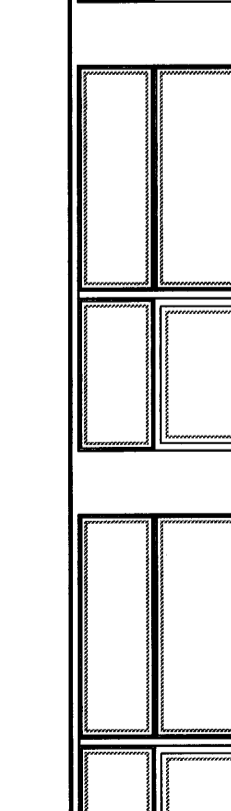
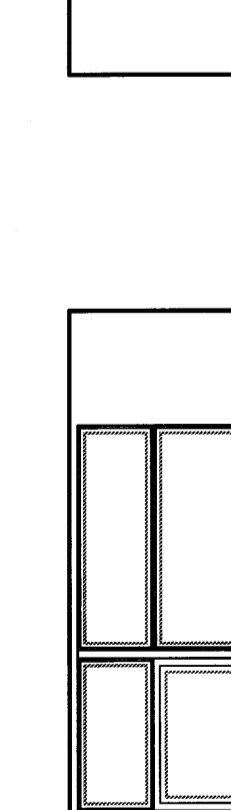
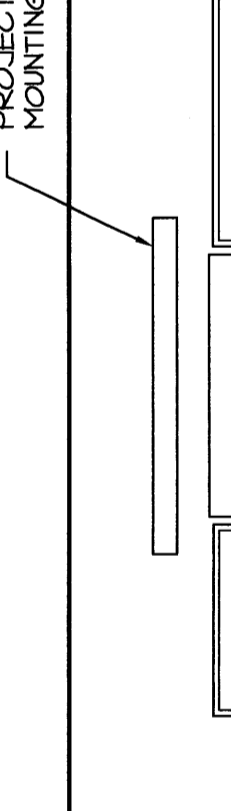
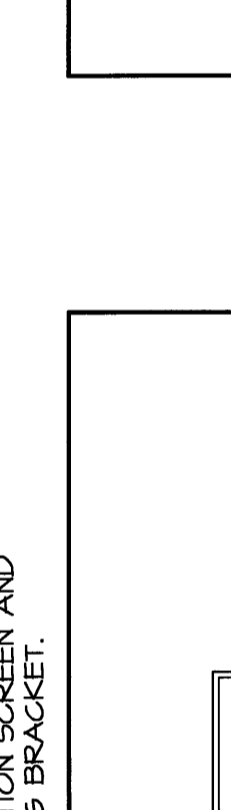
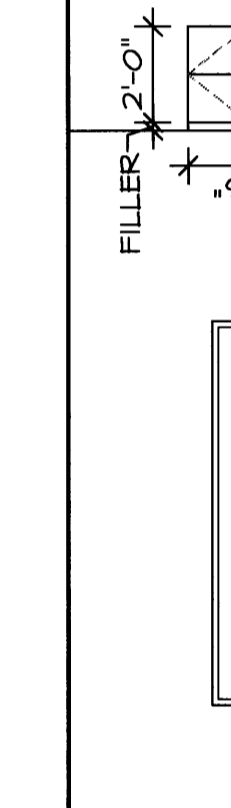
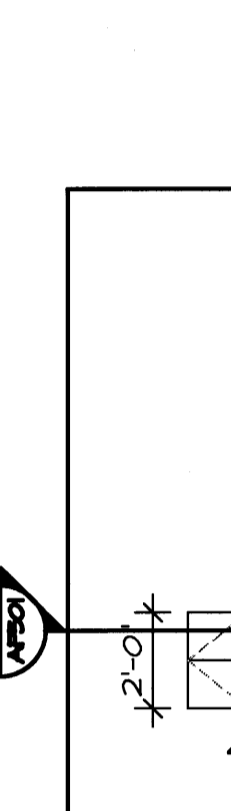
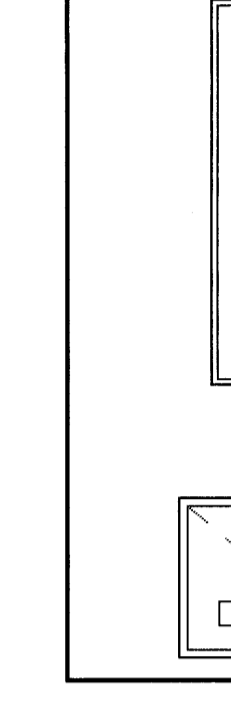
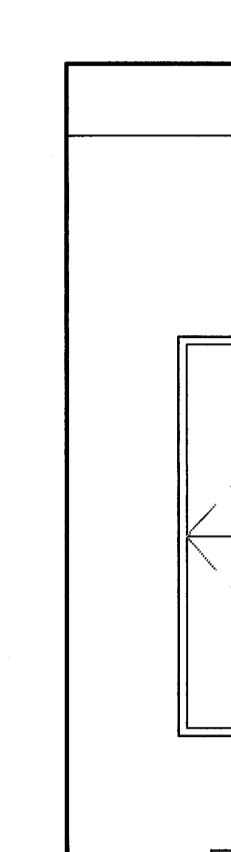
**TOILET ROOM #158A**  
 N14  
 1/4"-1'-0"  
 AEO02-B



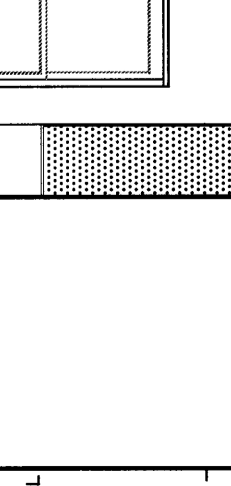
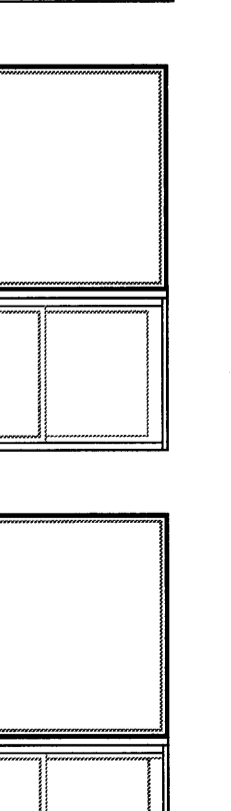
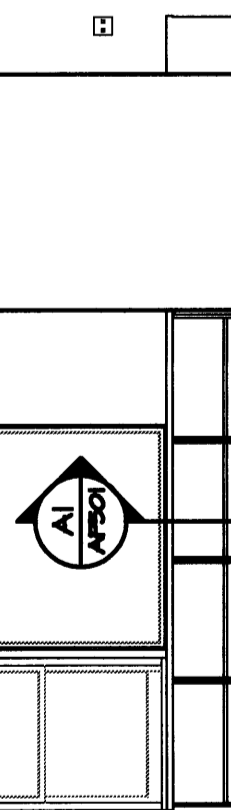
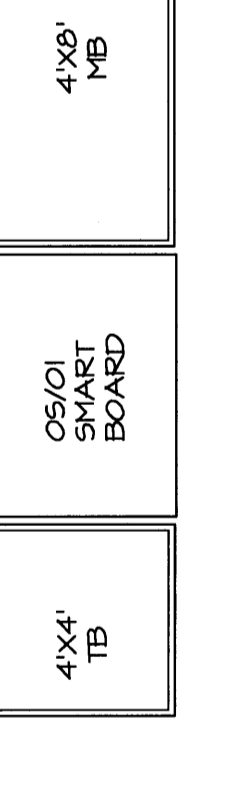
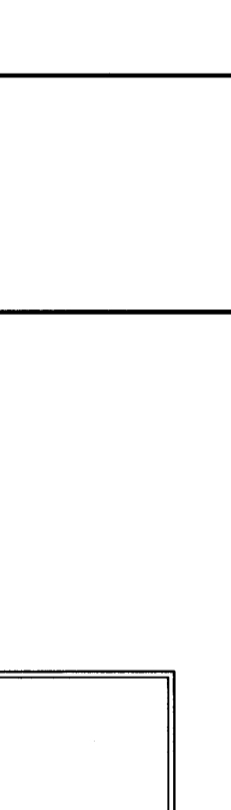
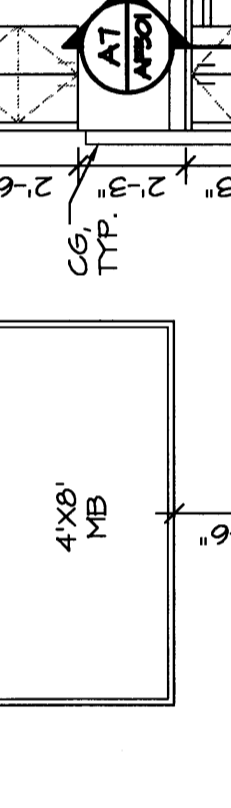
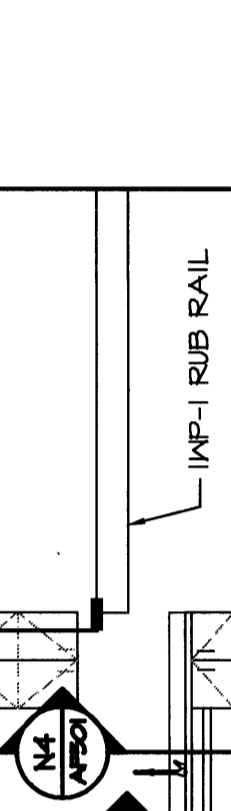
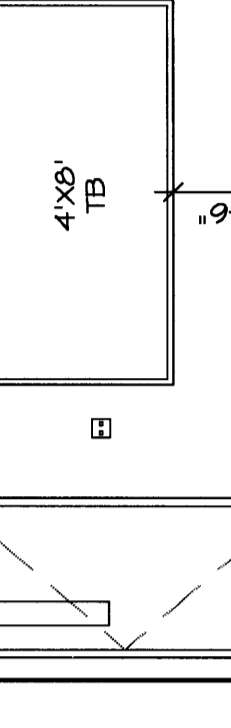
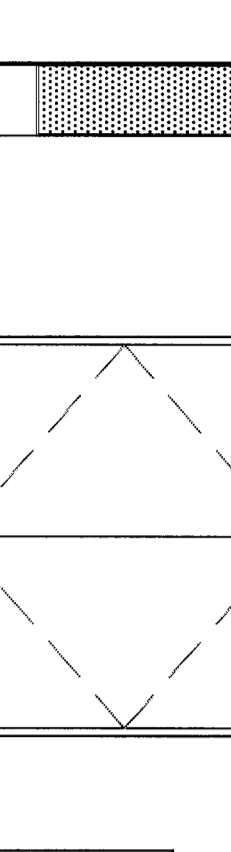
**TOILET ROOM #158C**  
 N10  
 1/4"-1'-0"  
 AEO10-C



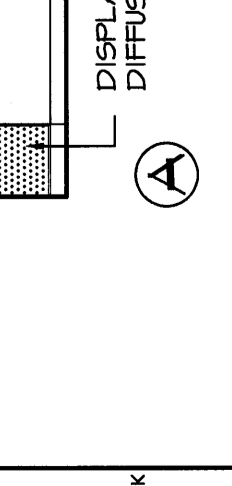
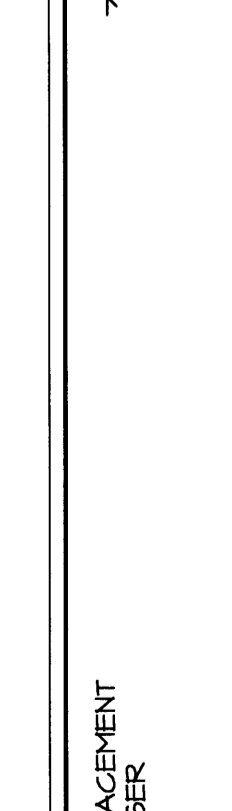
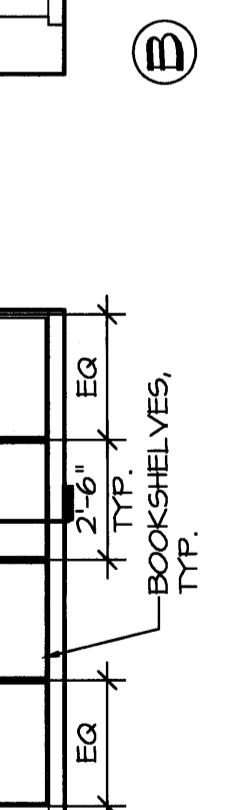
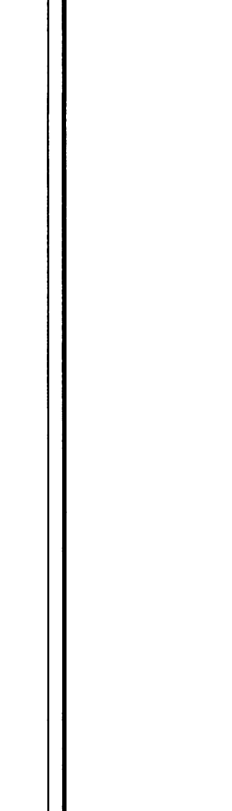
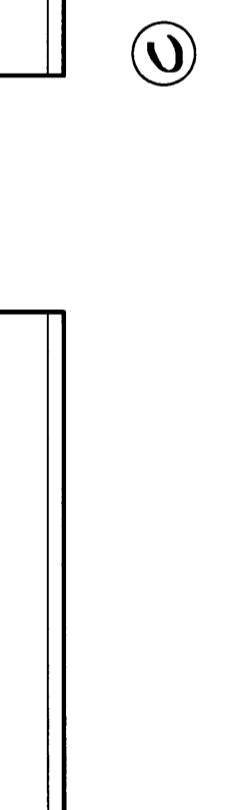
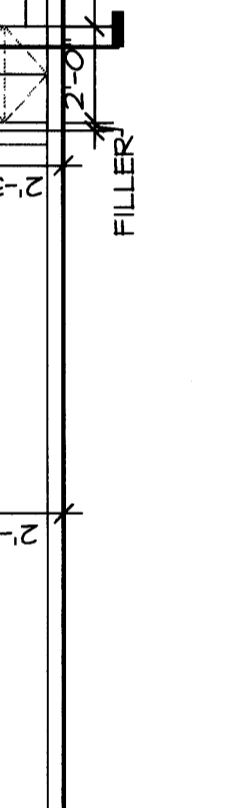
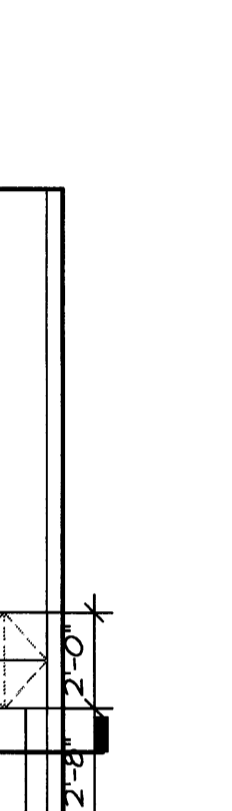
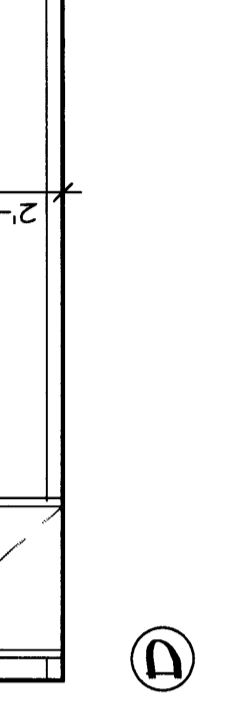
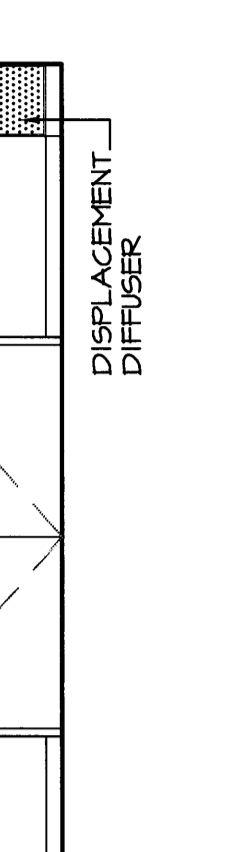
**CLASSROOM #206**  
 J1  
 1/4"-1'-0"  
 AEO02-B



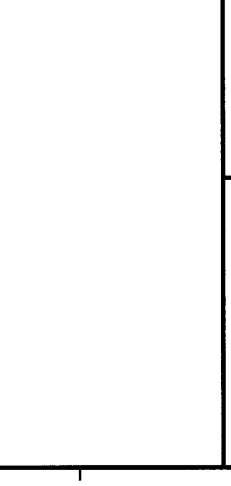
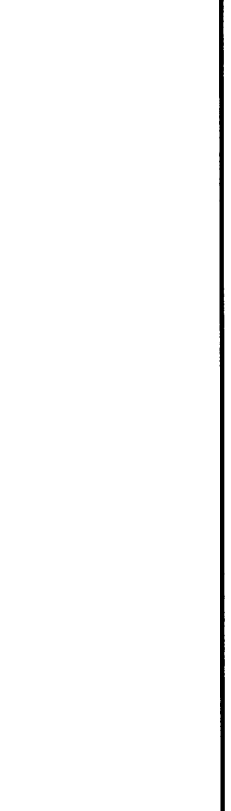
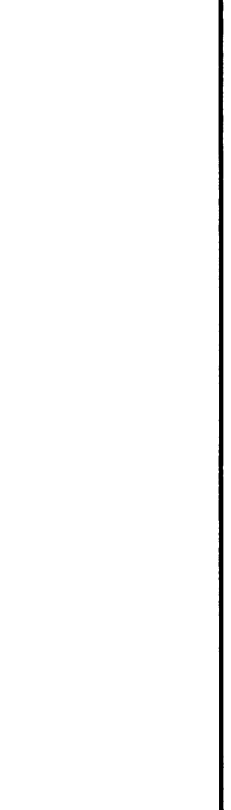
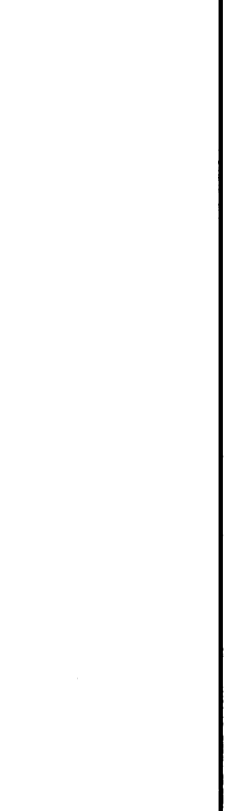
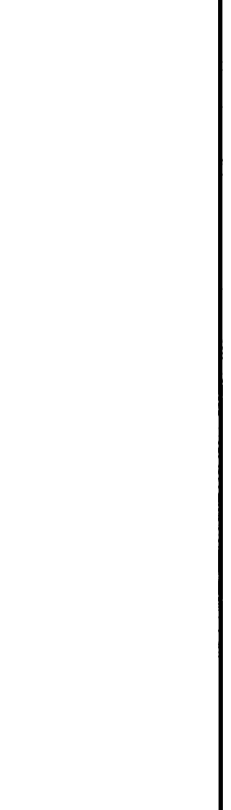
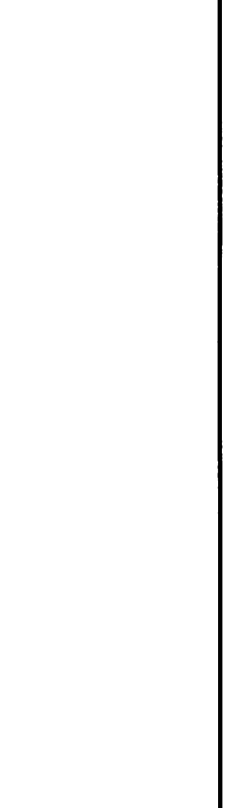
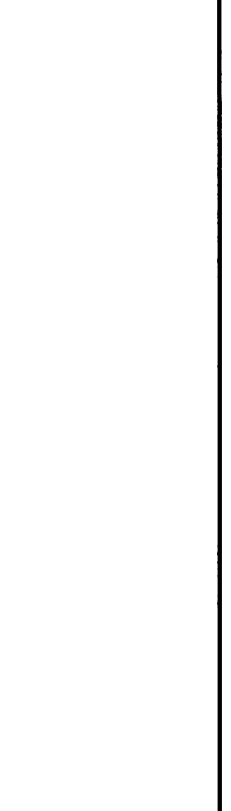
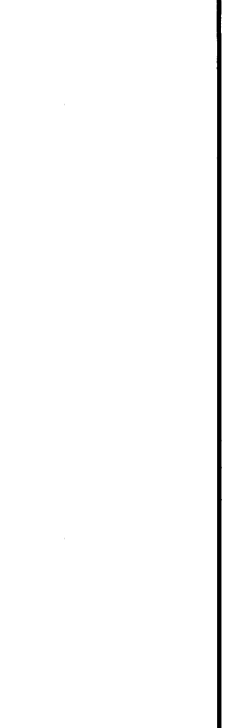
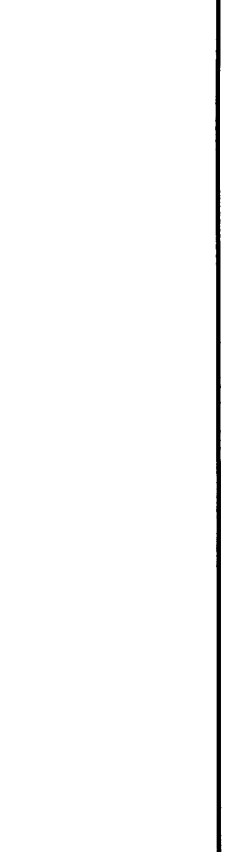
**CLASSROOM #209**  
 E1  
 1/4"-1'-0"  
 AEO02-B, AEO02-C



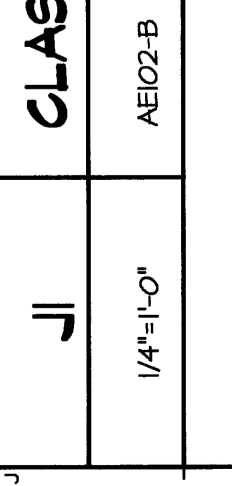
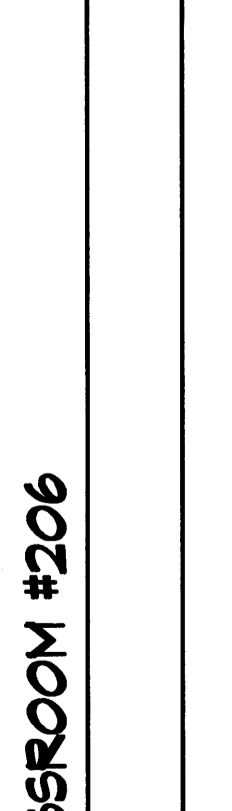
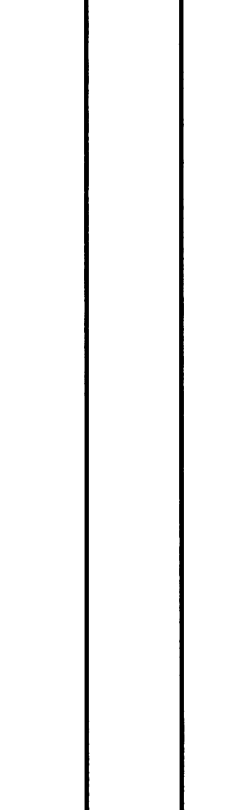
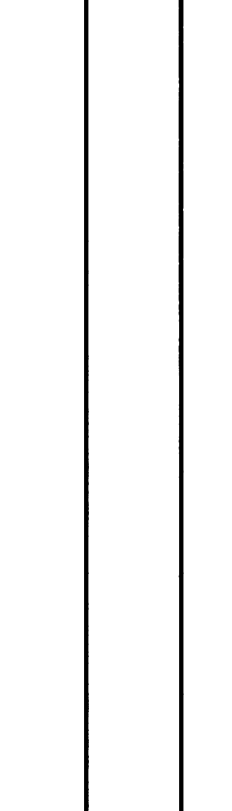
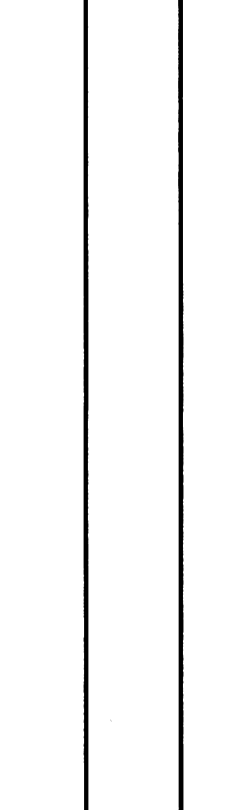
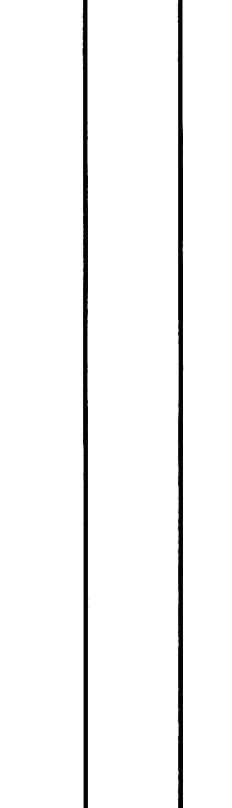
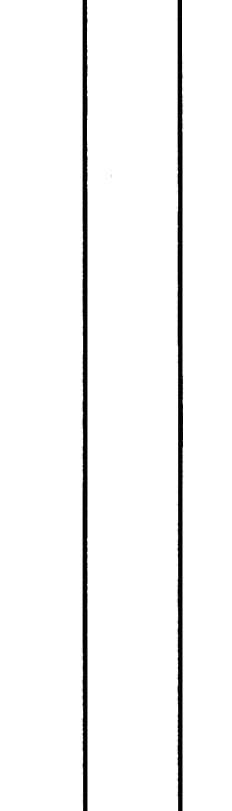
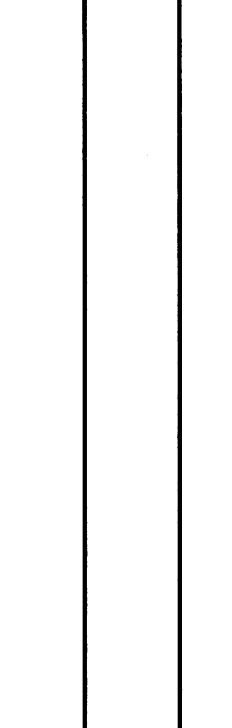
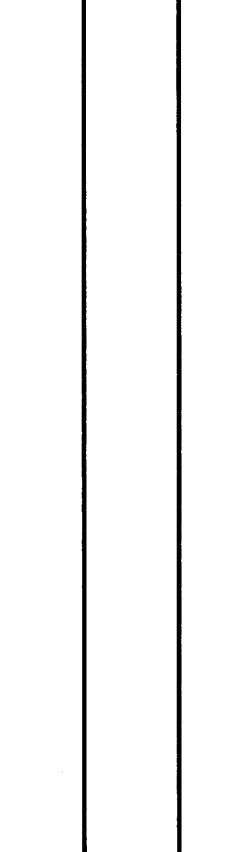
**RESOURCE #213**  
 A1  
 1/4"-1'-0"  
 AEO02-B



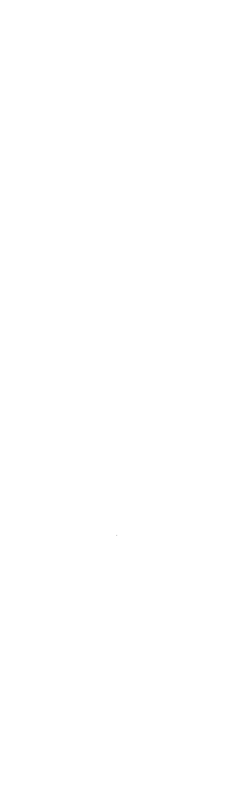
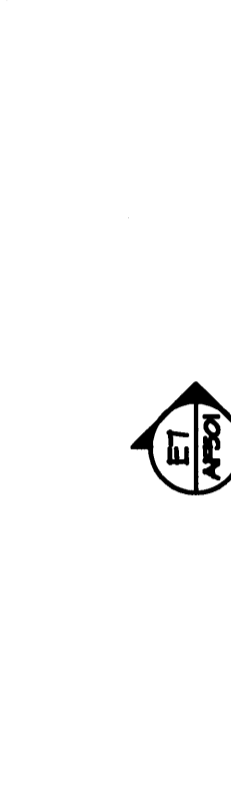
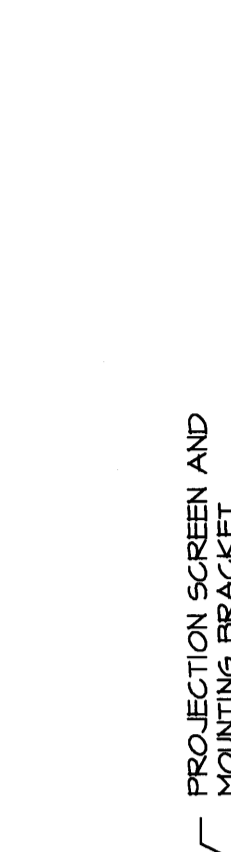
**CLASSROOM #206**  
 J1  
 1/4"-1'-0"  
 AEO02-B



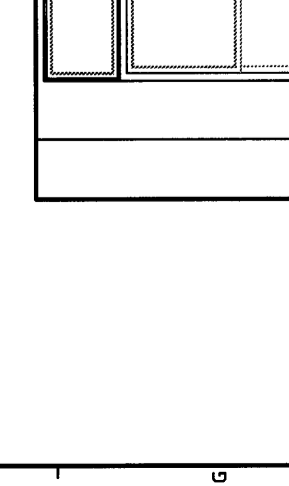
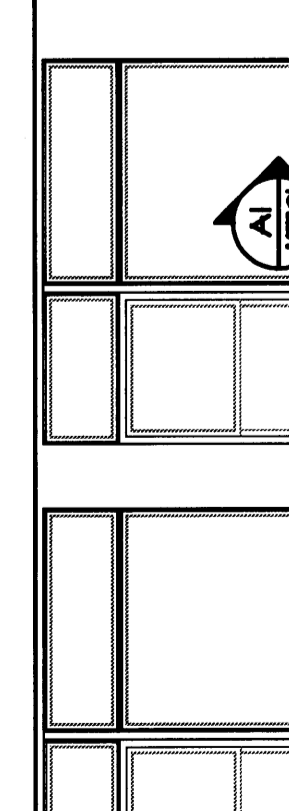
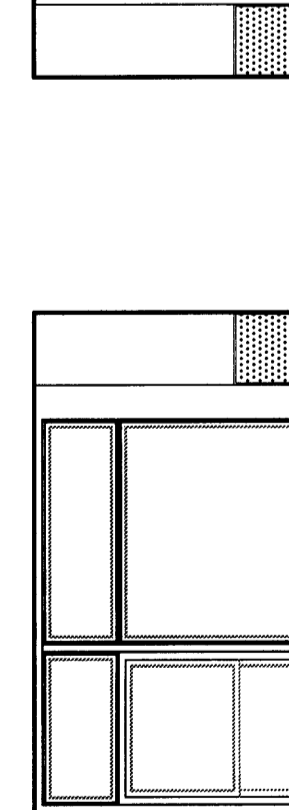
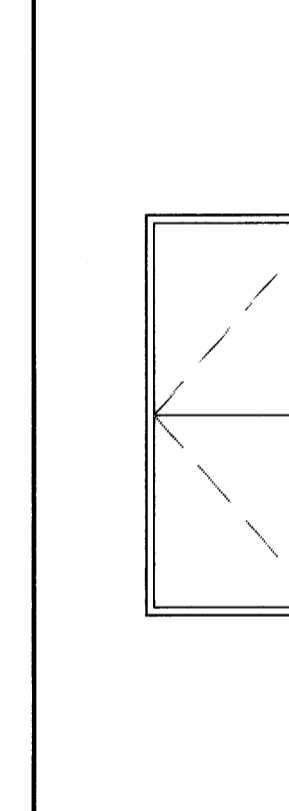
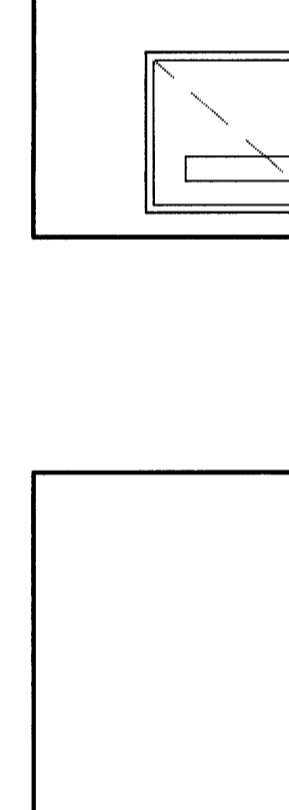
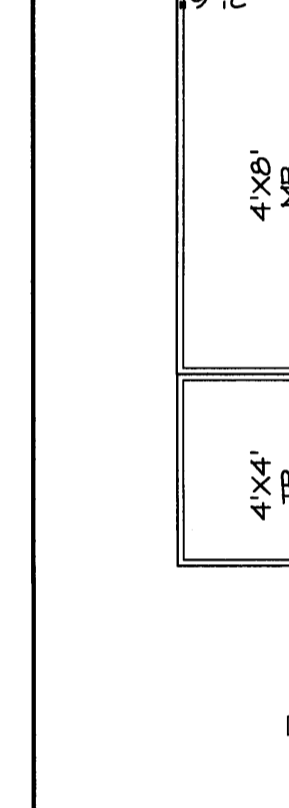
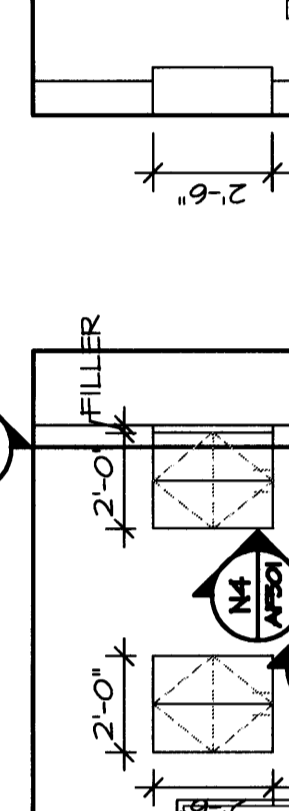
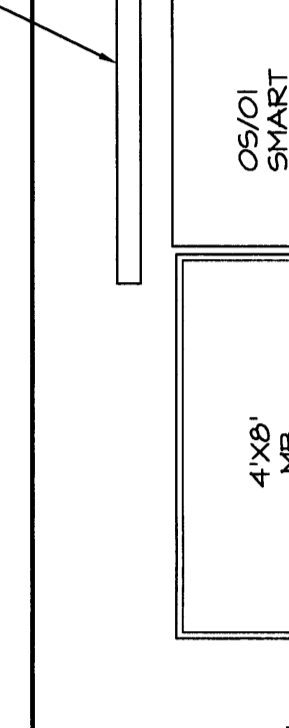
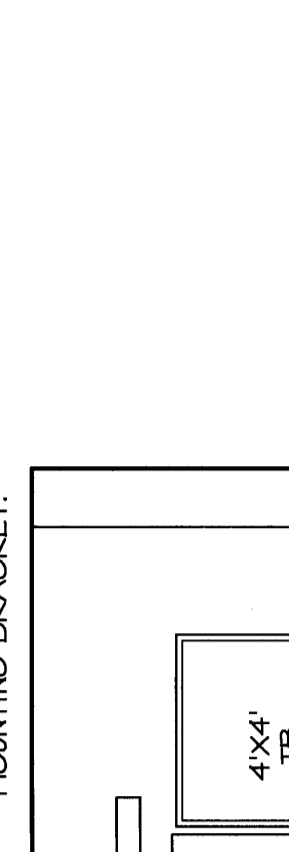
**CLASSROOM #209**  
 E1  
 1/4"-1'-0"  
 AEO02-B, AEO02-C



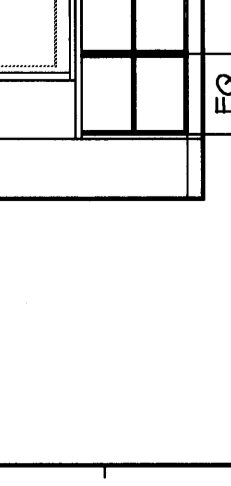
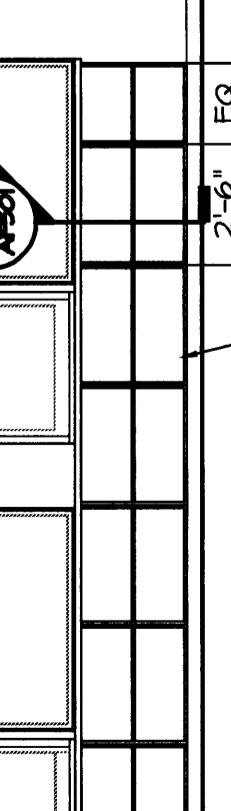
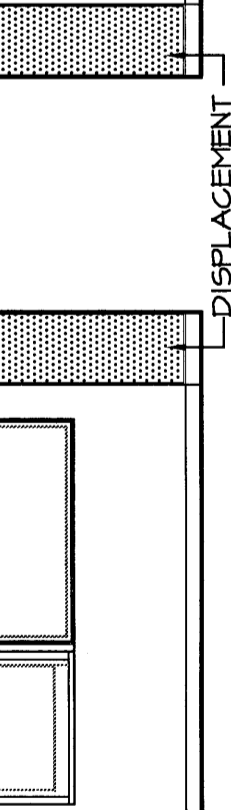
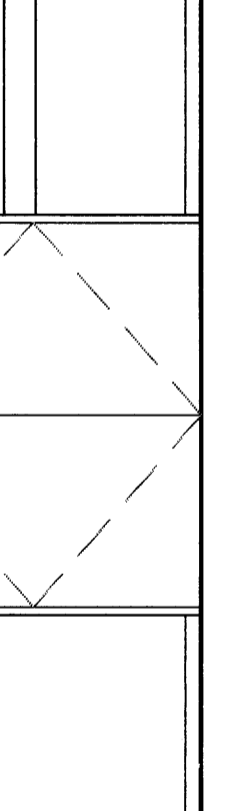
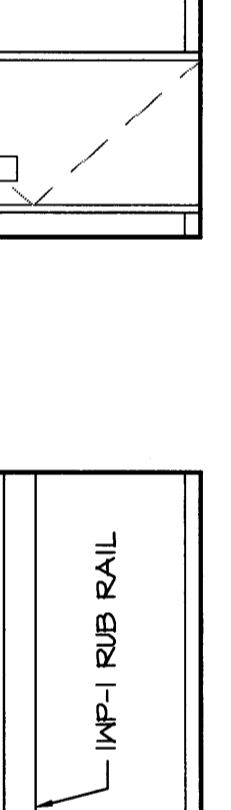
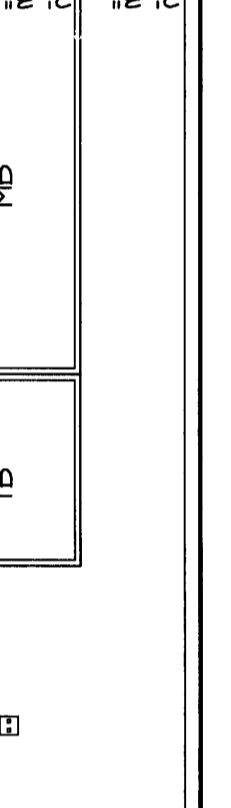
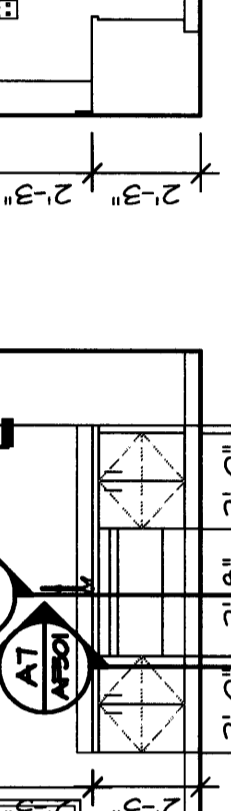
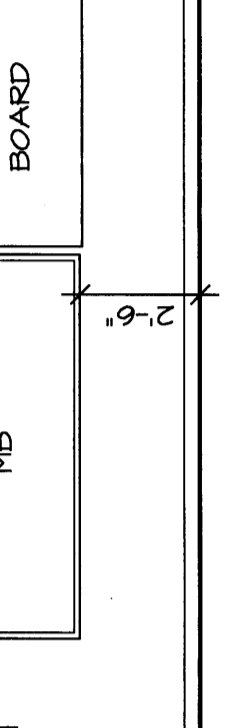
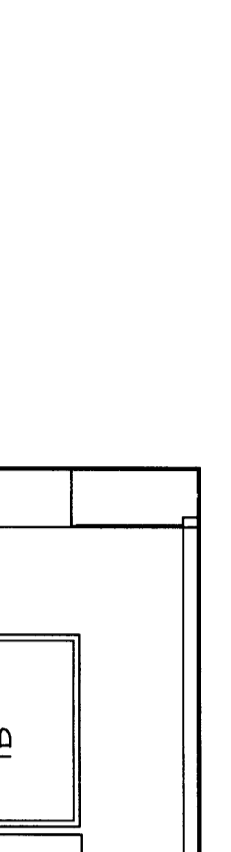
**RESOURCE #213**  
 A1  
 1/4"-1'-0"  
 AEO02-B



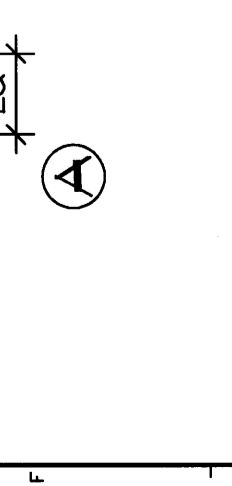
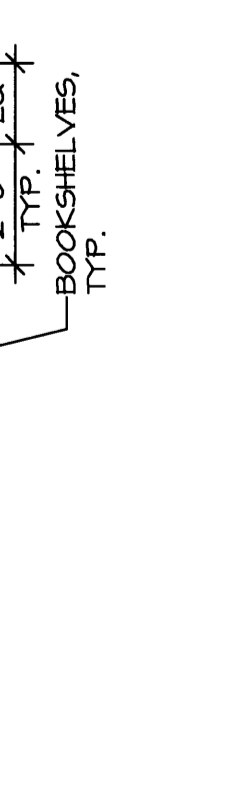
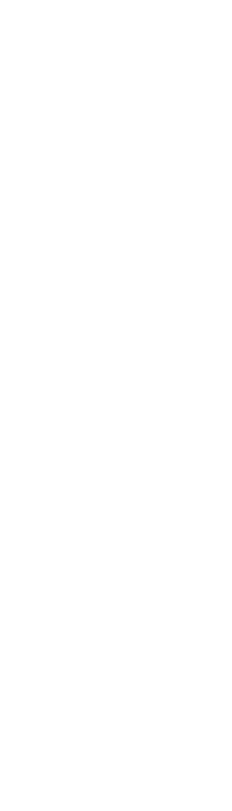
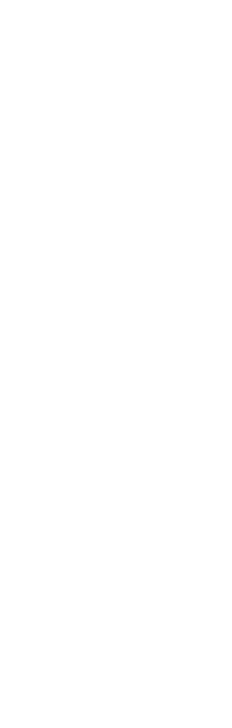
**CLASSROOM #206**  
 J1  
 1/4"-1'-0"  
 AEO02-B



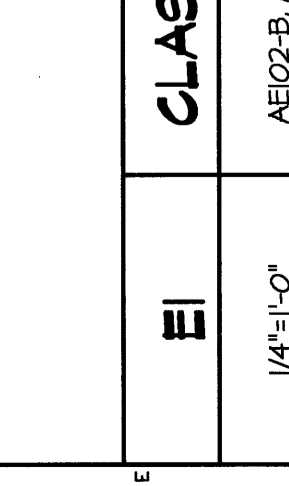
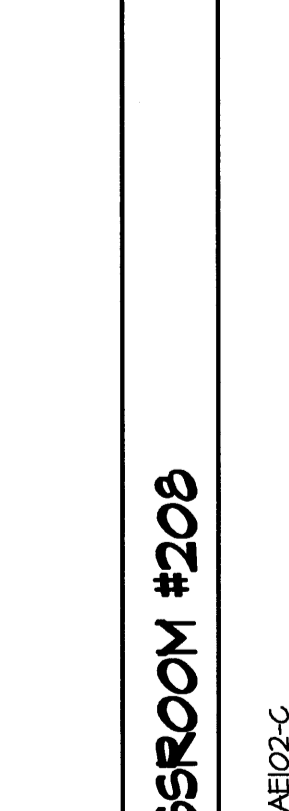
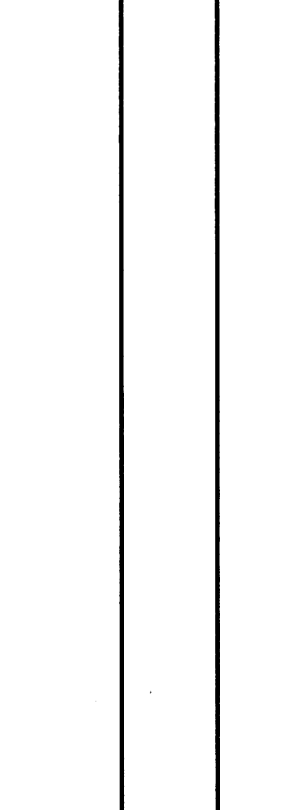
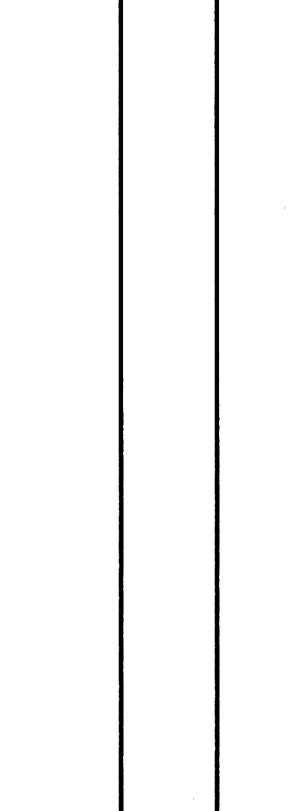
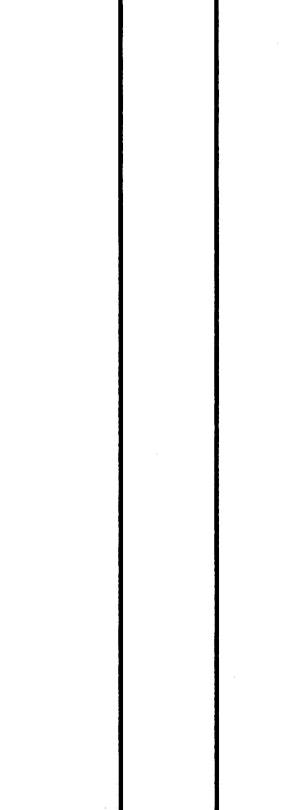
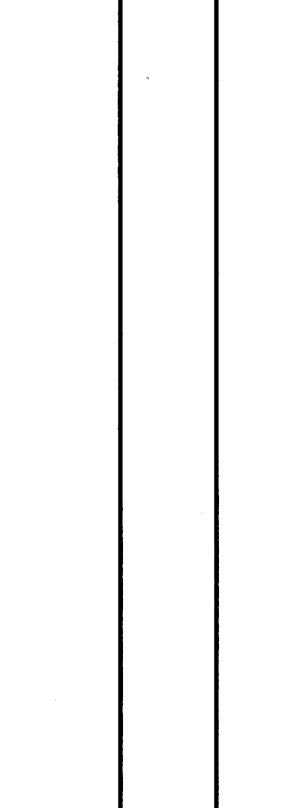
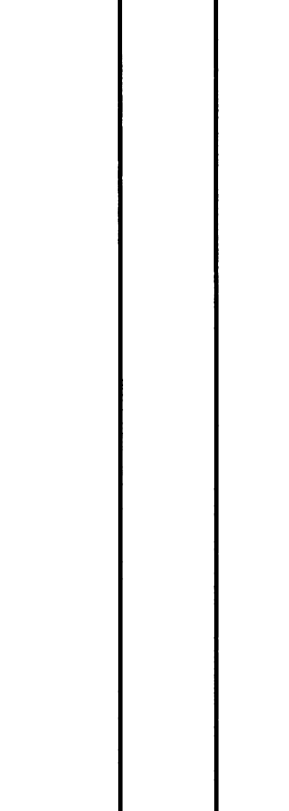
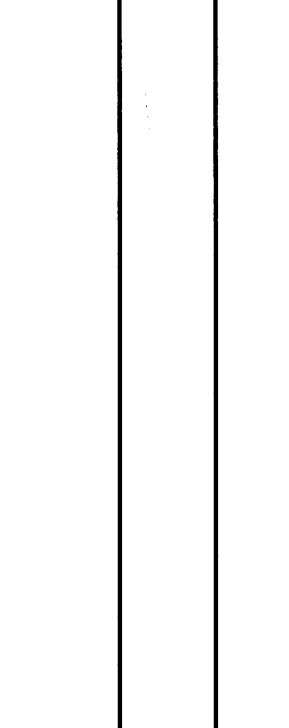
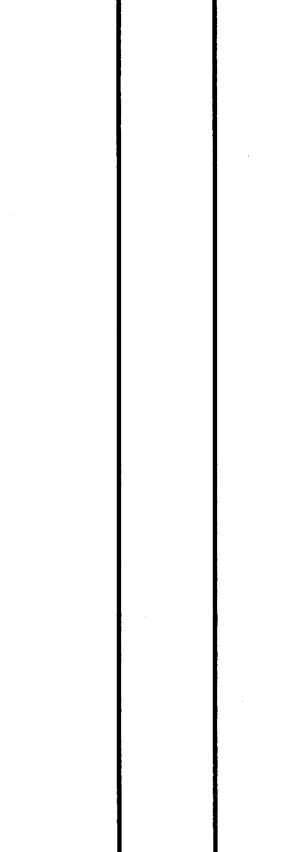
**CLASSROOM #209**  
 E1  
 1/4"-1'-0"  
 AEO02-B, AEO02-C



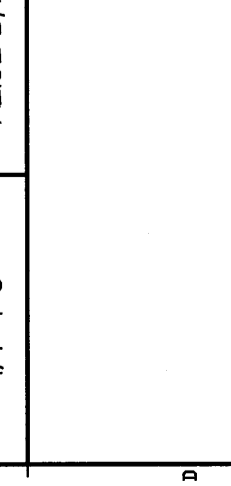
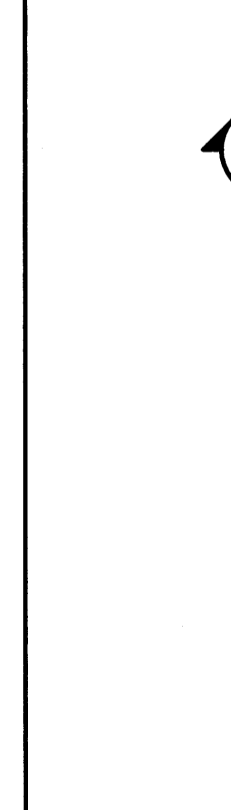
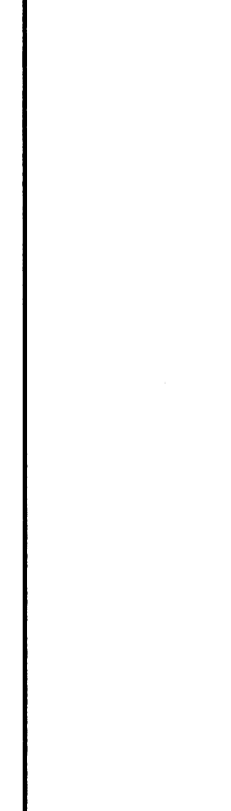
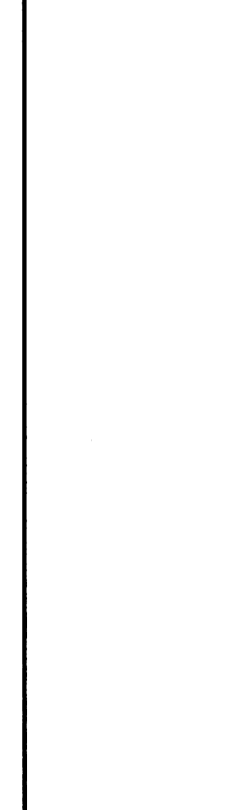
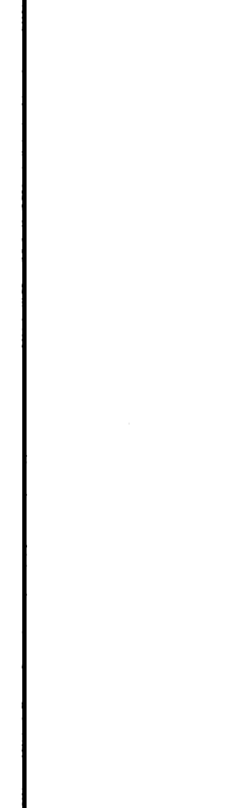
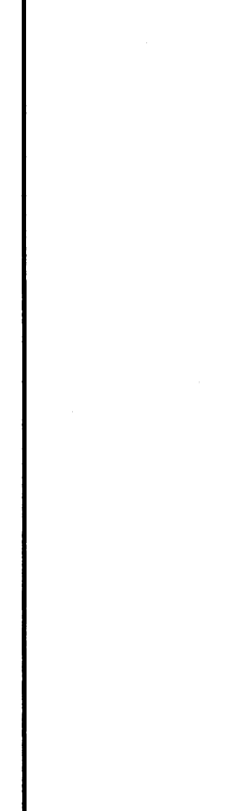
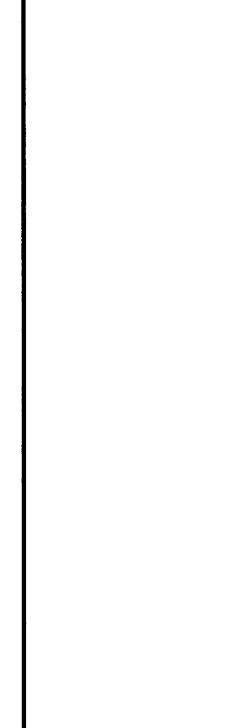
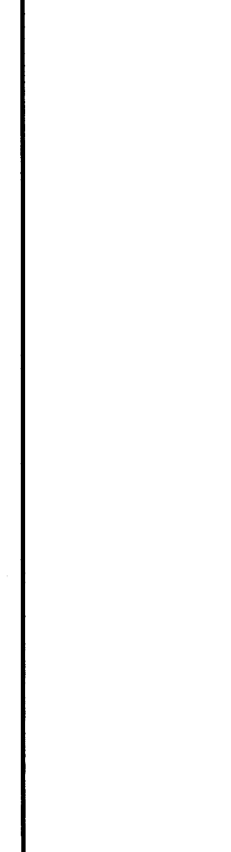
**RESOURCE #213**  
 A1  
 1/4"-1'-0"  
 AEO02-B



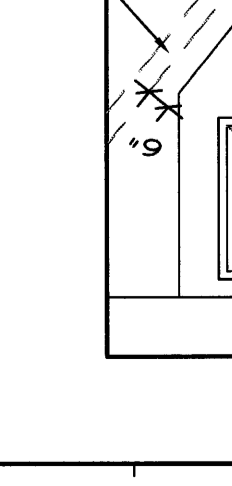
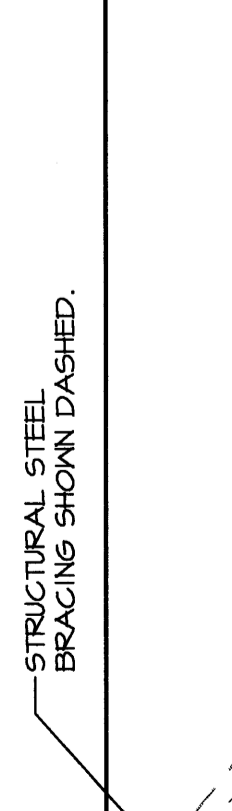
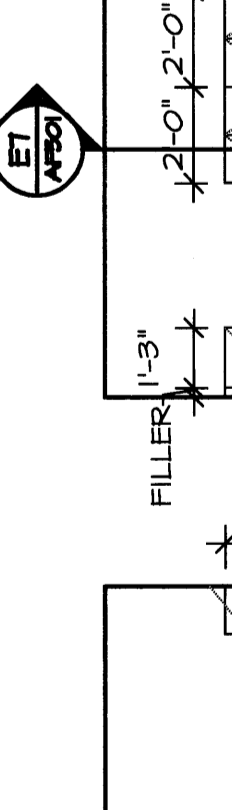
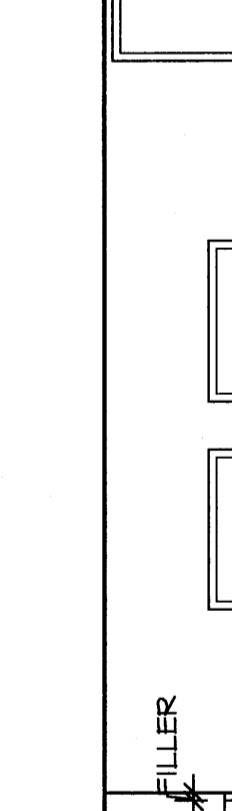
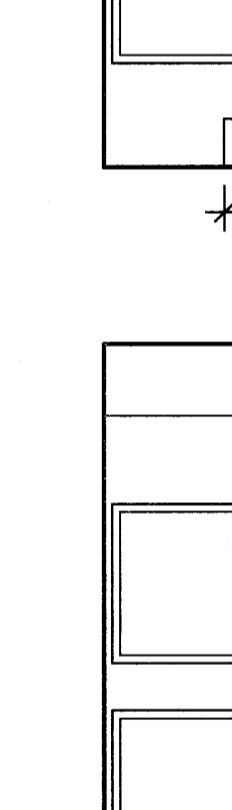
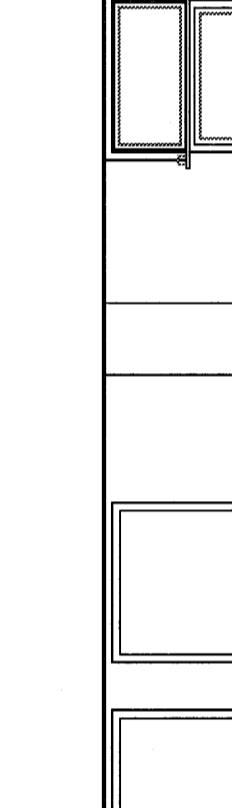
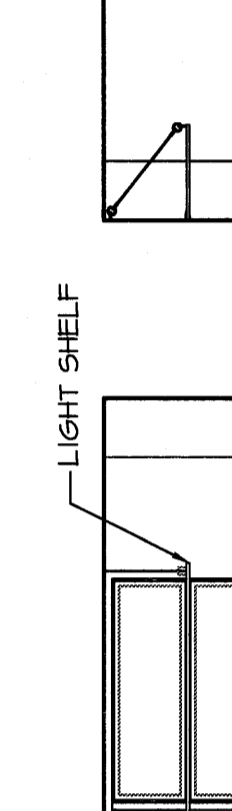
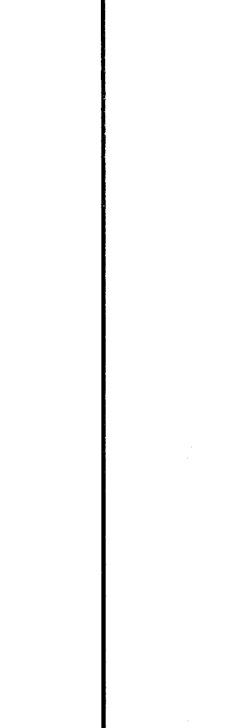
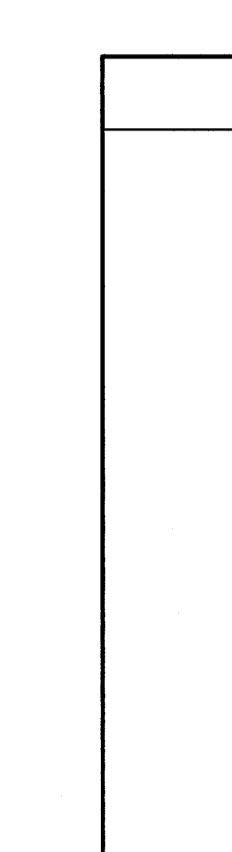
**CLASSROOM #206**  
 J1  
 1/4"-1'-0"  
 AEO02-B



**CLASSROOM #209**  
 E1  
 1/4"-1'-0"  
 AEO02-B, AEO02-C



**RESOURCE #213**  
 A1  
 1/4"-1'-0"  
 AEO02-B



**WBRC ARCHITECTS ENGINEERS**  
 3-18-09  
 MICHAEL JOHANNES  
 ARCHITECT  
 1000 W. 10TH AVE. SUITE 200  
 ANAHEIM, CALIFORNIA 92801-3800  
 (714) 771-1111

**OCEAN AVENUE ELEMENTARY SCHOOL**  
 PORTLAND, ME

**INTERIOR ELEVATIONS**

SHEET TITLE: 331610-AE216  
 WRC CAD FILE: 331610  
 PROJECT NO.: 331610  
 SCALE: AS NOTED  
 PROJECT MANAGER: MEJ  
 DRAWN BY: JLP/RAD  
 CHECKED BY: MEJ

PERMIT APPLICATION  
 SUBMISSION 3-18-09

REV. DESCRIPTION DATE  
 0 00:00:00