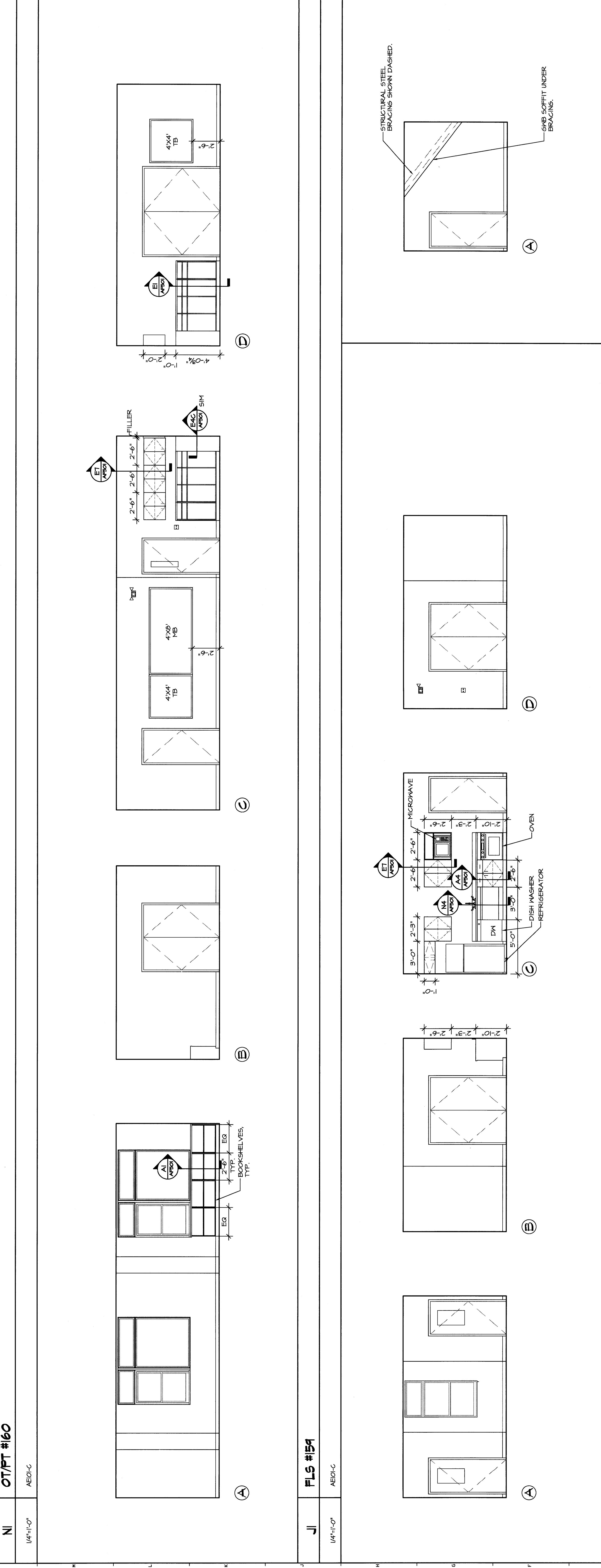


- GENERAL INTERIOR ELEVATIONS NOTES:**
- REFER TO ARCHITECTURAL ABBREVIATIONS ON SHEET 0102 FOR ALL ABBREVIATIONS
  - REFER TO K1/AE205 FOR TYPICAL TOILET ACCESSORY LEGEND AND MOUNTING HEIGHT INFORMATION.
  - G.C. SHALL PROVIDE AND INSTALL BLOORING BRACKETS FOR THE PROPER INSTALLATION OF ALL CASEWORK (BOTH CONTRACTOR AND OWNER SUPPLIED) INCLUDING ALL MISCELLANEOUS EQUIPMENT WHETHER SUCH SUPPORTS ARE SHOWN OR NOT. G.C. TO SUPPLY AND INSTALL CORNER JOINTS AND CORNER SUPPORTS WITH THE OWNER.
  - REFER TO A801 FOR ALL DOOR TYPES, STYLE AND FRAME STYLES.
  - ALL EQUIPMENT, CASEWORK, ETC TO BE C.S.C.I. U.N.O.
  - REFER TO DIVISION 6 SPECIFICATION FOR DETAILED CABINETS.
  - CABINETS SHOWN TO ALL UNITS. IT IS THE RESPONSIBILITY OF THE SUPPLIER TO ENSURE ALL CABINET DOORS AND DRAWERS OPEN TO THEIR FULL EXTENT WITHOUT INTERFERENCE SUCH AS HARDWARE.
  - ALL FILLER PANELS AND FINISHED END PANELS TO MATCH WOOD CABINETS IN SPECIES AND FINISH.
  - "CJ" DENOTES GMB CONTROL JOINT LOCATIONS.
  - "CC" DENOTES CORNER GUARD LOCATIONS.

NI	1/4"-1'-0"	OT/PT #160	AE01-C
J	1/4"-1'-0"	FLS #154	AE01-C
EI	1/4"-1'-0"	FLS #150	AE01-C
AI	1/4"-1'-0"	FLS #157	AE01-C



EI	1/4"-1'-0"	FLS #150	AE01-C
EI5	1/4"-1'-0"	LIT. SP. #140	---
AI	1/4"-1'-0"	FLS #157	AE01-C

REV.	DESCRIPTION	DATE
0		00.00.00

PERMIT APPLICATION  
SUBMISSION 3-18-09  
CURRENT ISSUE STATUS:

**WBRC**  
ARCHITECTS - ENGINEERS  
316 05  
MANLYN, MAINE 04048  
ANNAPOLIS, MARYLAND 21403

OCEAN AVENUE ELEMENTARY SCHOOL  
PORTLAND, ME

PROJECT: INTERIOR ELEVATIONS

SHEET TITLE: 331610-AE215  
WBRC JOB FILE: 331610  
SCALE: AS NOTED  
PROJECT MANAGER: MEJ  
DRAWN BY: JLB/RAD  
CHECKED BY: MEJ

SHEET NO. AE215