

- GENERAL INTERIOR ELEVATIONS NOTES:**
- REFER TO ARCHITECTURAL ABBREVIATIONS ON SHEET 11002 FOR ALL ABBREVIATIONS.
  - REFER TO K/MEAS FOR TYPICAL TOILET ABBREVIATIONS, LEGEND AND MOUNTING HEIGHT INFORMATION.
  - G.C. SHALL PROVIDE AND INSTALL BLOCKING BRACKETS FOR THE PROPER INSTALLATION OF ALL CASEWORK (BOTH CONTRACTOR AND OWNER SUPPLIED). ALL CASEWORK SHALL BE INSTALLED ON UNITS AND MISCELLANEOUS EQUIPMENT WHETHER SUCH SUPPORTS ARE SHOWN OR NOT. G.C. TO COORDINATE ALL CASEWORK INSTALLMENTS OF OWNER SUPPLIED ITEMS WITH THE OWNER.
  - REFER TO A5601 FOR ALL DOOR TYPES, STYLE AND FRAME STYLES.
  - ALL EQUIPMENT, CASEWORK, ETC. TO BE C.S.I.C. U.N.C.
  - REFER TO DIVISION 6 SPECIFICATION FOR DETAILED CASEWORK INSTALLATION RELATED TO MILLWORK WOOD CABINETS.
  - CABINETS SHOWN TO ILLUSTRATE INTENT. IT IS THE RESPONSIBILITY OF THE SUPPLIER TO ENSURE ALL CABINET DOORS AND DRAWERS OPEN TO THEIR FULL EXTENT WITHOUT INTERFERENCE SUCH AS HARDWARE.
  - ALL FILLER PANELS AND FINISHED END PANELS TO MATCH WOOD CABINETS IN SPECIES AND FINISH.
  - "CJ" DENOTES GWB CONTROL JOINT LOCATIONS.
  - "CG" DENOTES CORNER JOINT LOCATIONS.
  - ASSUMER PANELS, COUNTERTOPS, MOUNTING BRACKETS, AND GRAIN EITHER HORIZONTALLY OR VERTICALLY. REFER TO SPECIFICATIONS FOR GRAIN DIRECTION NOT SHOWN.

1. REFER TO ARCHITECTURAL ABBREVIATIONS ON SHEET 11002 FOR ALL ABBREVIATIONS.

2. REFER TO K/MEAS FOR TYPICAL TOILET ABBREVIATIONS, LEGEND AND MOUNTING HEIGHT INFORMATION.

3. G.C. SHALL PROVIDE AND INSTALL BLOCKING BRACKETS FOR THE PROPER INSTALLATION OF ALL CASEWORK (BOTH CONTRACTOR AND OWNER SUPPLIED). ALL CASEWORK SHALL BE INSTALLED ON UNITS AND MISCELLANEOUS EQUIPMENT WHETHER SUCH SUPPORTS ARE SHOWN OR NOT. G.C. TO COORDINATE ALL CASEWORK INSTALLMENTS OF OWNER SUPPLIED ITEMS WITH THE OWNER.

4. REFER TO A5601 FOR ALL DOOR TYPES, STYLE AND FRAME STYLES.

5. ALL EQUIPMENT, CASEWORK, ETC. TO BE C.S.I.C. U.N.C.

6. REFER TO DIVISION 6 SPECIFICATION FOR DETAILED CASEWORK INSTALLATION RELATED TO MILLWORK WOOD CABINETS.

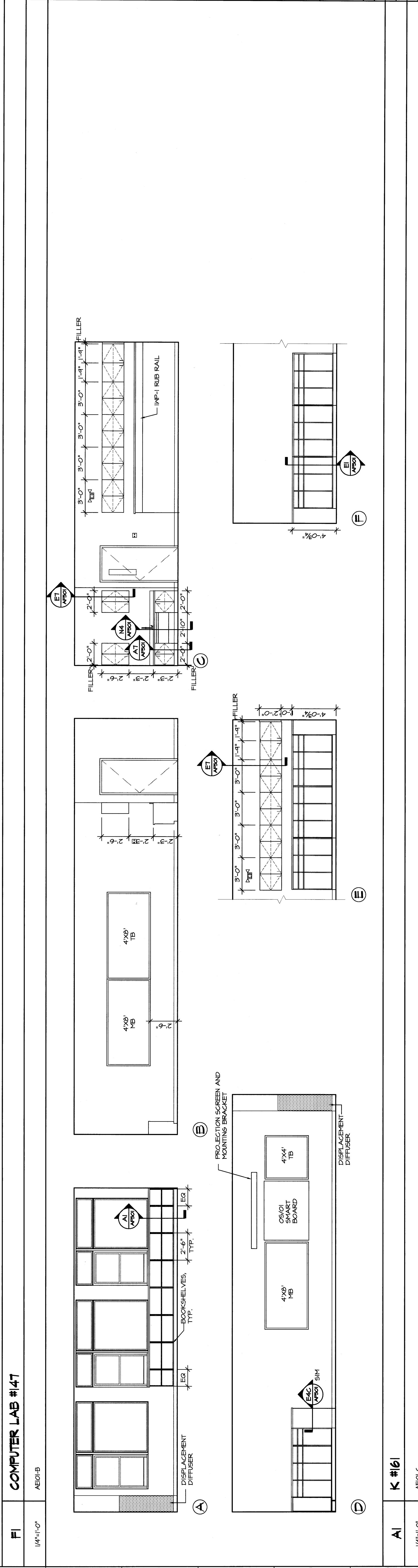
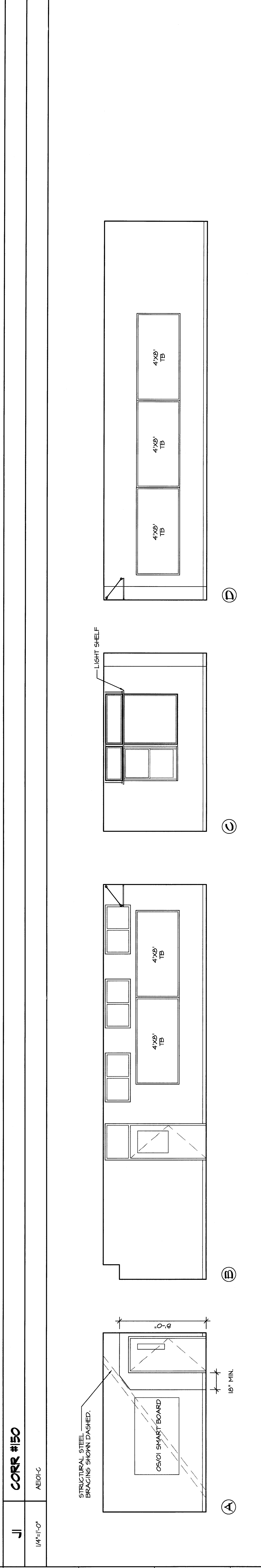
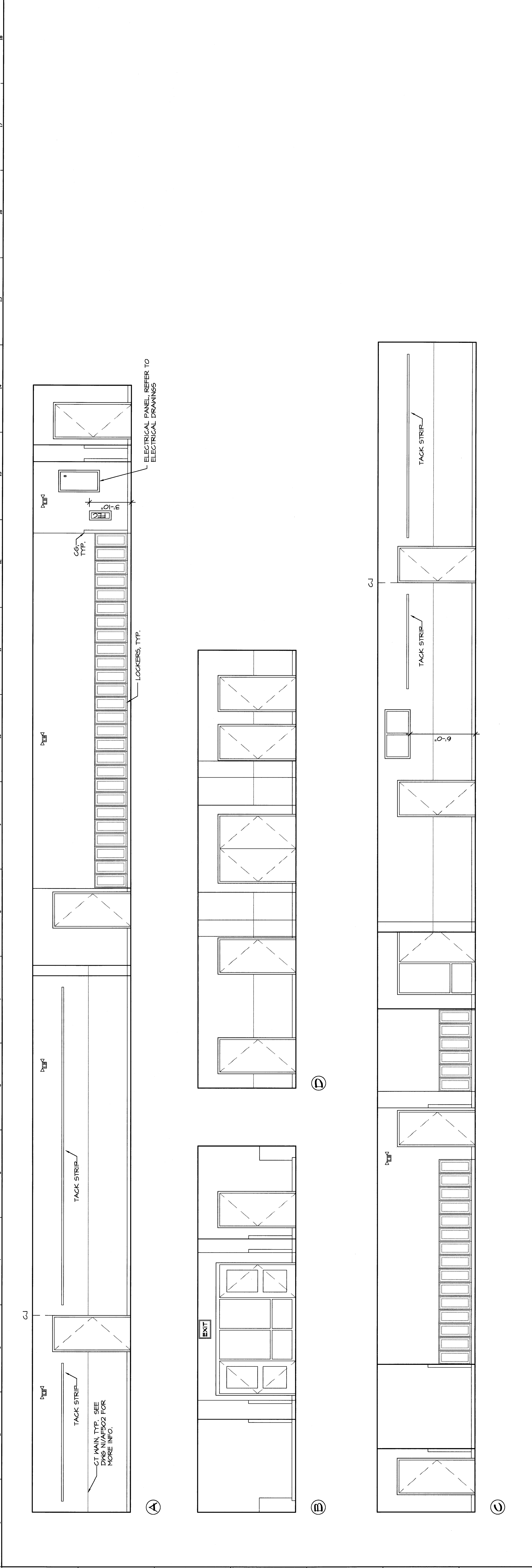
7. CABINETS SHOWN TO ILLUSTRATE INTENT. IT IS THE RESPONSIBILITY OF THE SUPPLIER TO ENSURE ALL CABINET DOORS AND DRAWERS OPEN TO THEIR FULL EXTENT WITHOUT INTERFERENCE SUCH AS HARDWARE.

8. ALL FILLER PANELS AND FINISHED END PANELS TO MATCH WOOD CABINETS IN SPECIES AND FINISH.

9. "CJ" DENOTES GWB CONTROL JOINT LOCATIONS.

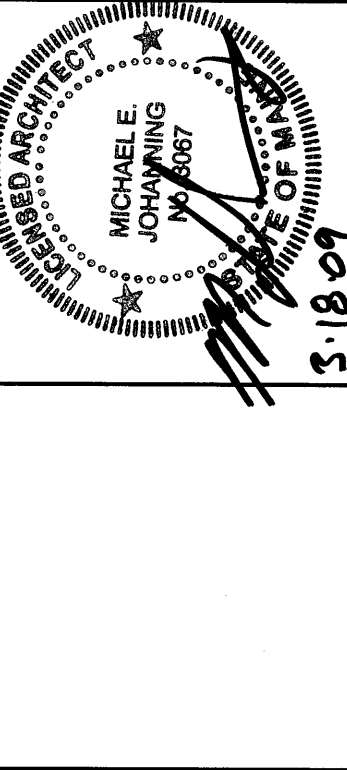
10. "CG" DENOTES CORNER JOINT LOCATIONS.

11. ASSUMER PANELS, COUNTERTOPS, MOUNTING BRACKETS, AND GRAIN EITHER HORIZONTALLY OR VERTICALLY. REFER TO SPECIFICATIONS FOR GRAIN DIRECTION NOT SHOWN.



REV.	DESCRIPTION	DATE
0		00.00.00

PERMIT APPLICATION  
SUBMISSION 3-18-09  
CURRENT ISSUE STATUS:



**WBRC**  
ARCHITECTS - ENGINEERS  
BANKS, MAIN, 200-40-05  
ARCHITECTS - ENGINEERS  
1000 WASHINGTON ST. SUITE 200  
PORTLAND, ME 04101

OCEAN AVENUE ELEMENTARY  
SCHOOL  
PORTLAND, ME

PROJECT: INTERIOR ELEVATIONS

SHEET TITLE: INTERIOR ELEVATIONS

WBRC CAD FILE: 331610-AE214

SCALE: AS NOTED

PROJECT MANAGER: MEJ

DRAWN BY: JLS/JAD

CHECKED BY: MEJ

331610-AE214

3-18-09

3-18-09

AE214