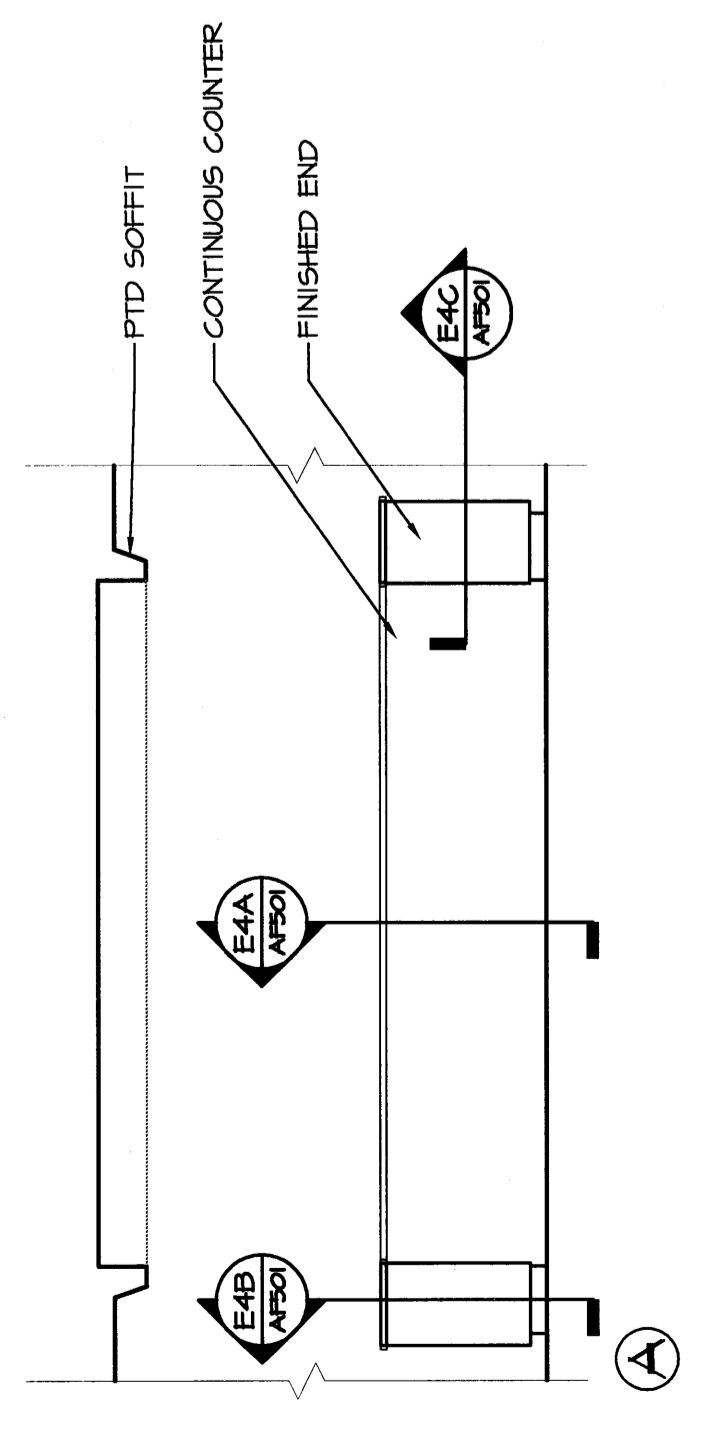
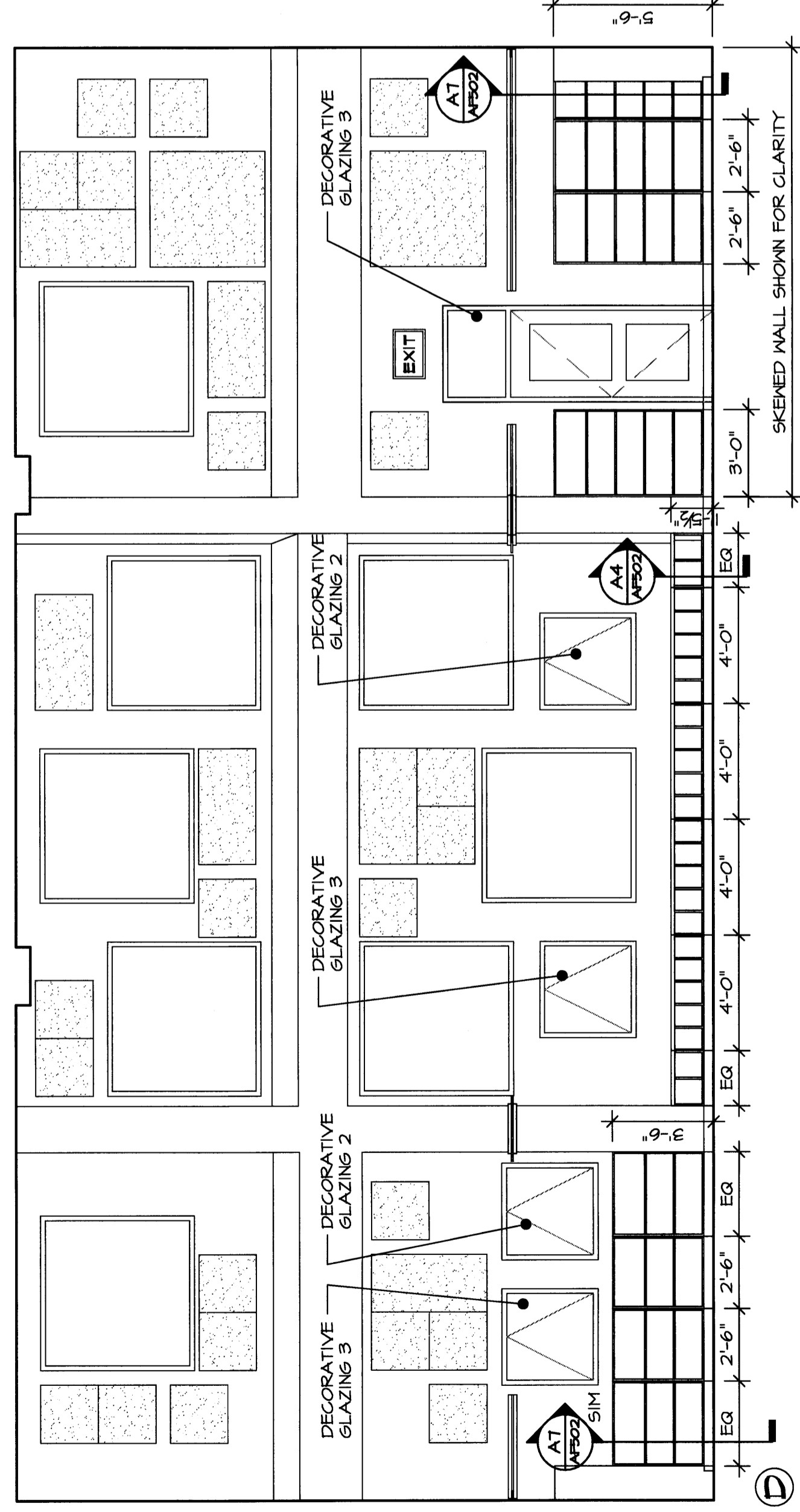
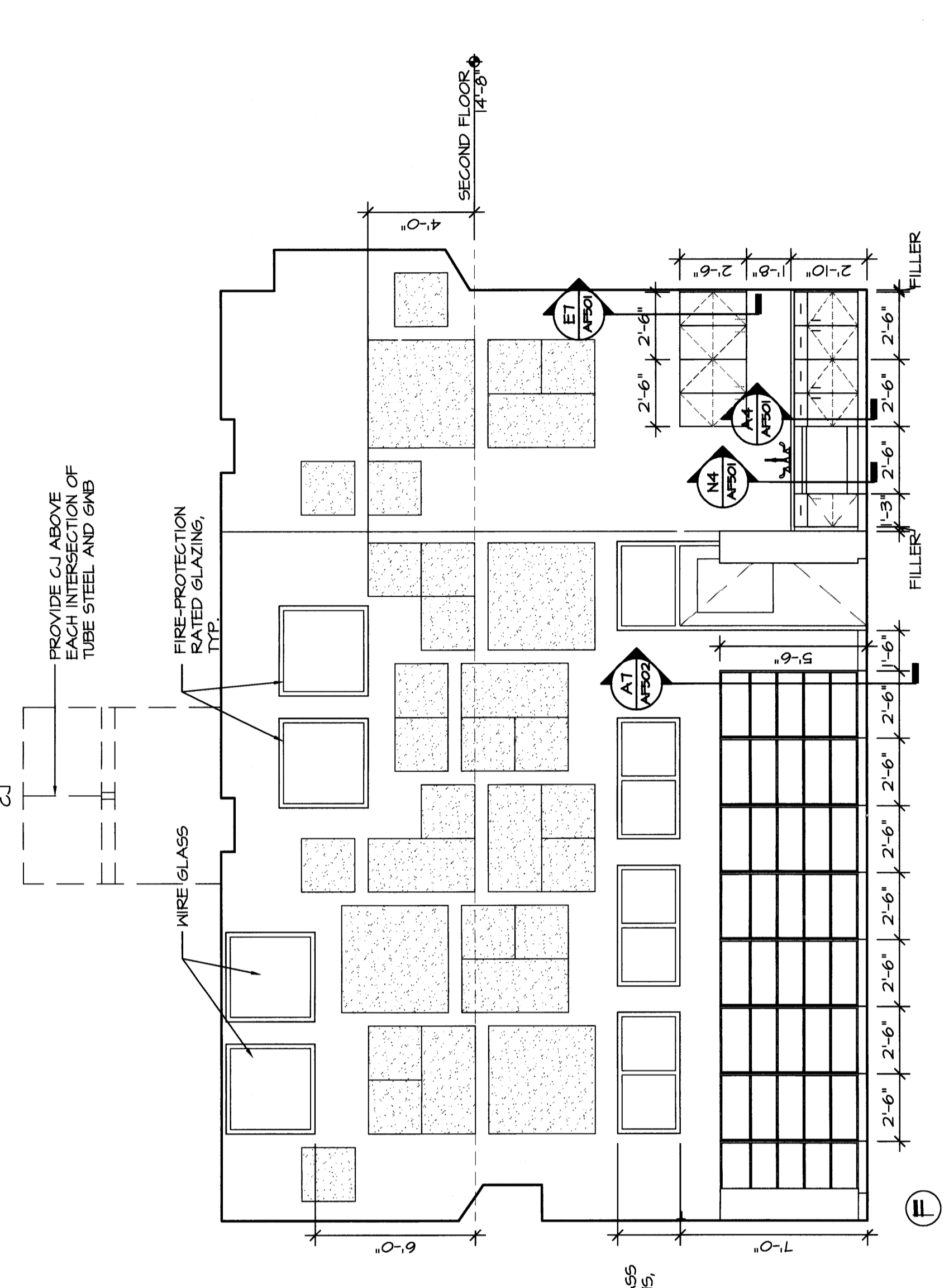
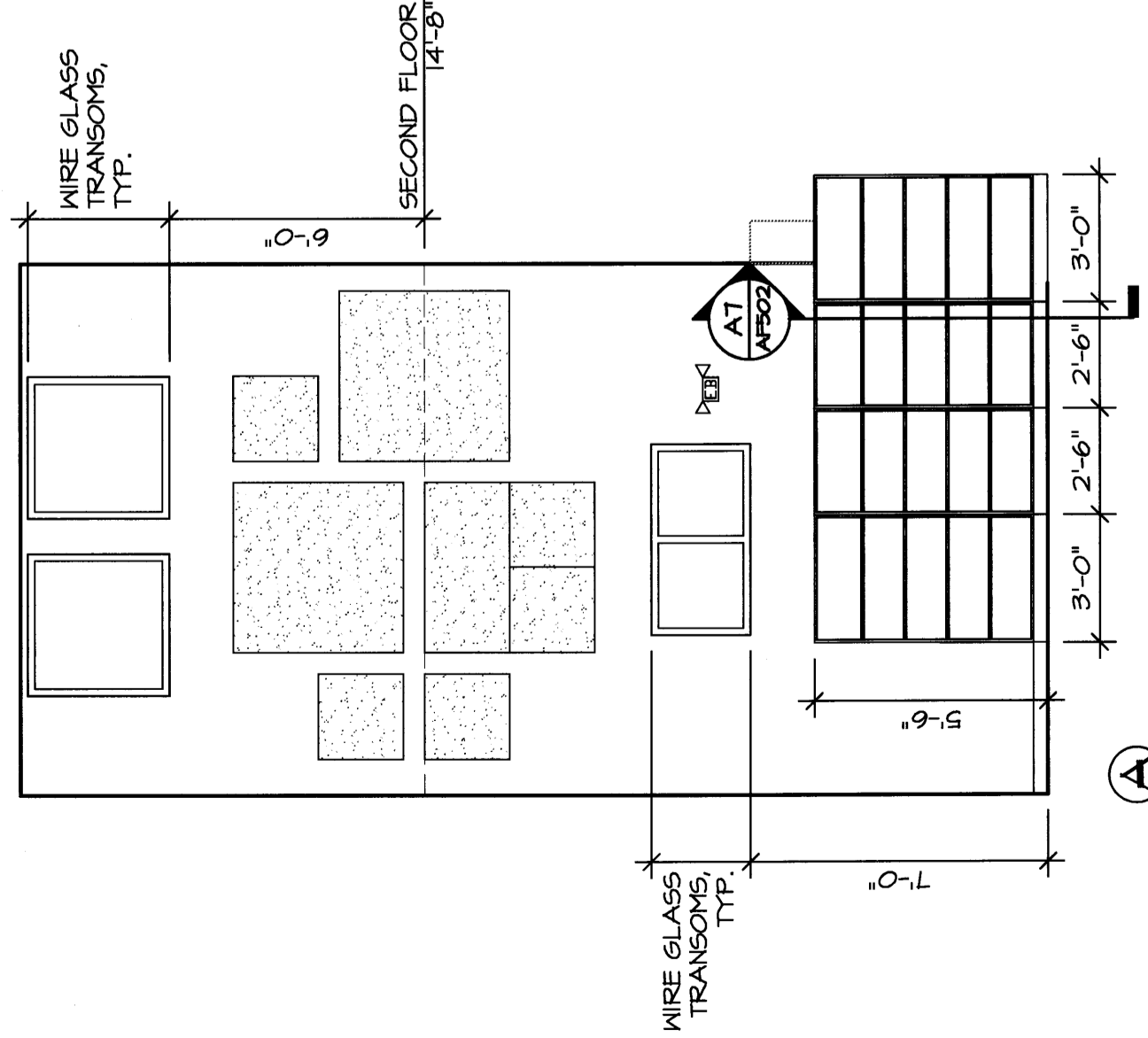
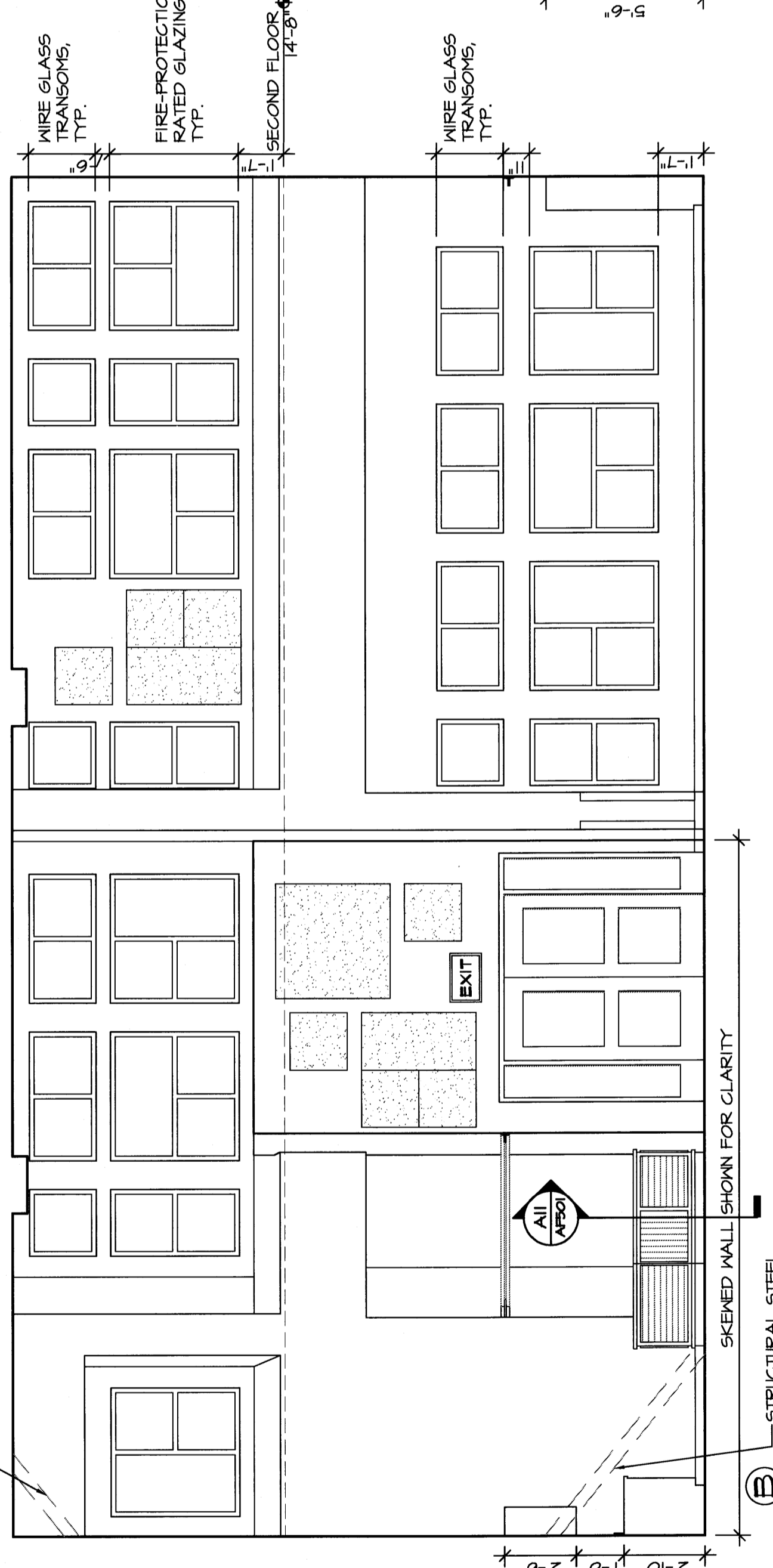
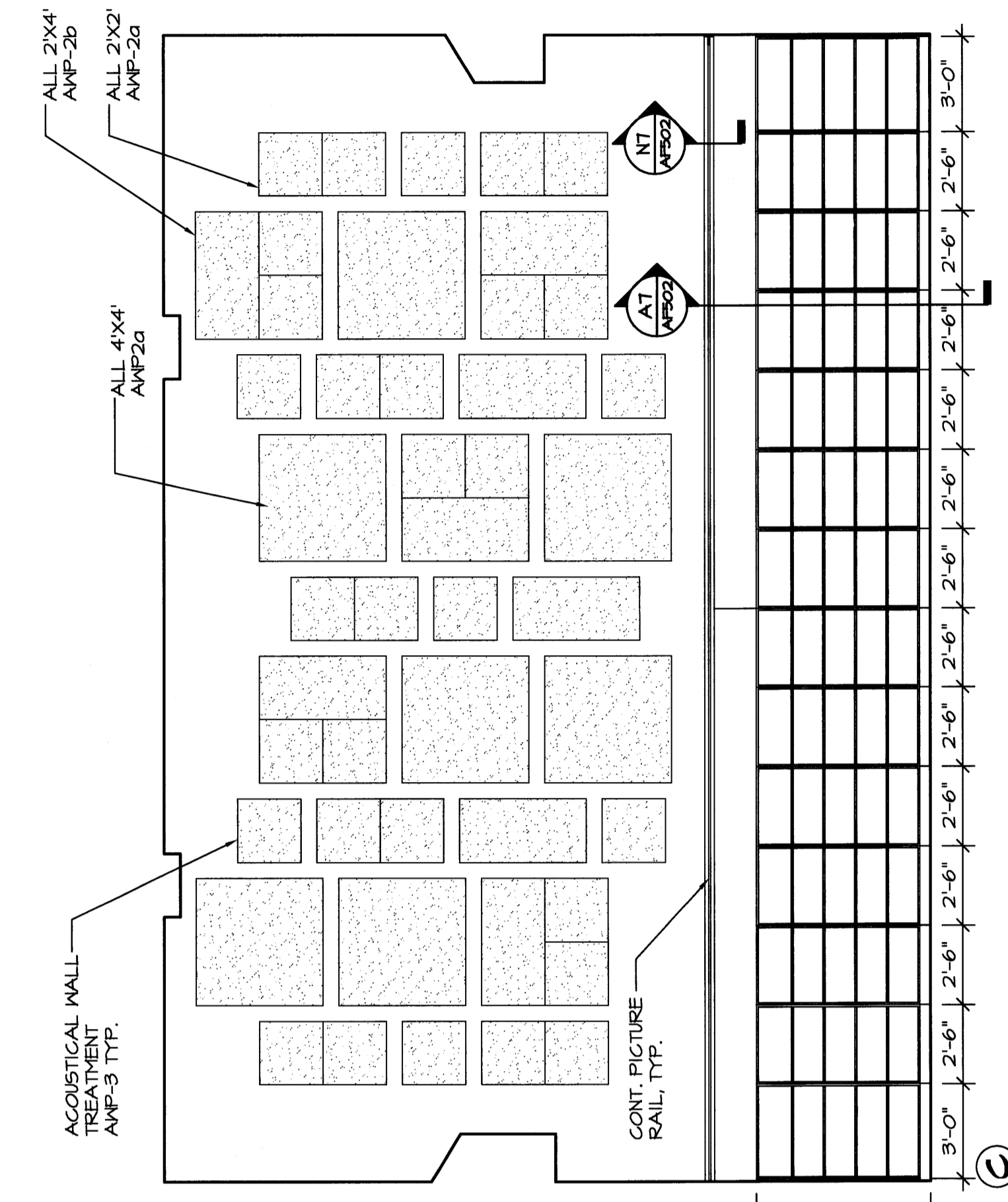


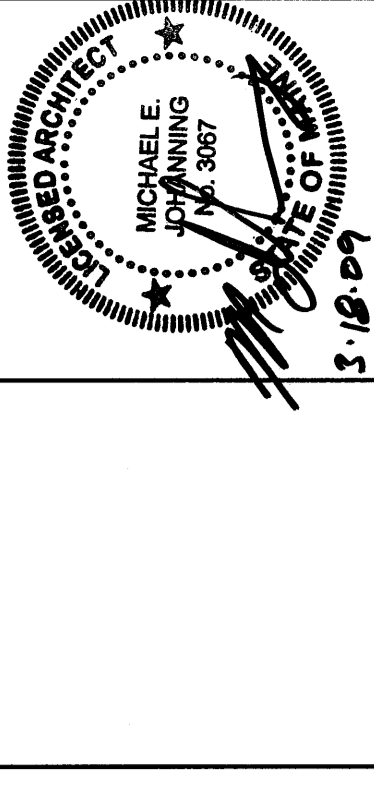
GENERAL INTERIOR ELEVATIONS NOTES:

- REFER TO ARCHITECTURAL ABBREVIATIONS ON SHEET 0306 FOR ALL ABBREVIATIONS.
- REFER TO KVA206 FOR TYPICAL TOILET FIXTURES AND MOUNTING HEIGHT INFORMATION.
- G.C. SHALL PROVIDE AND INSTALL BLOCKING BRACKETS FOR THE PROPER INSTALLATION OF ALL SUPPLIED TOILET ACCESSORIES. VISUAL DISPLAY UNITS AND MISCELLANEOUS EQUIPMENT WHETHER SUCH SUPPORTS ARE SHOWN OR NOT. G.C. TO PROVIDE ALL NECESSARY HARDWARE AND SUPPLIED ITEMS WITH THE OWNER.
- REFER TO 0601 FOR ALL DOOR TYPES, STYLE AND FRAME STYLES.
- ALL EQUIPMENT, CASEWORK, ETC TO BE CS/CI, UNO.
- REFER TO FINISH SCHEDULE FOR DETAILED INFORMATION RELATED TO MILLWORK, WOOD CABINETS.
- CABINETS SHOWN TO ILLUSTRATE INTENT. IT IS THE RESPONSIBILITY OF THE SUPPLIER TO ENSURE ALL CABINET DOORS AND DRAWERS OPEN TO THEIR FULL EXTENT WITHOUT INTERFERENCE SUCH AS HARDWARE.
- ALL FILLER PANELS AND FINISHED END PANELS TO MATCH WOOD CABINETS IN SPECIES AND FINISH.
- "CJ" DENOTES GWB CONTROL JOINT LOCATIONS.
- "CG" DENOTES CORNER GUARD LOCATIONS.
- AGFRIBER PANELS GRAPHICALLY INDICATE DIRECTION OF GRAIN EITHER HORIZONTALLY OR VERTICALLY. REFER TO SPECIFICATIONS FOR GRAIN DIRECTION NOT SHOWN.



REV.	DESCRIPTION	DATE
0	---	00.00.00

PERMIT APPLICATION
SUBMISSION 3-18-09



WBRC
ARCHITECTS - ENGINEERS
1000 WASHINGTON ST., SUITE 200
PORTLAND, MAINE 04101-4000
PHONE: 603.761.1111
FAX: 603.761.1112
WWW.WBRC-ARCHITECTS.COM

OCEAN AVENUE ELEMENTARY SCHOOL
PORTLAND, ME

INTERIOR ELEVATIONS

SHEET TITLE:	33161-D-AE213
WBRC JOB FILE:	33161-D
PROJECT NO.:	AS NOTED
SCALE:	MEJ
PROJECT MANAGER:	MEJ
DRAWN BY:	JLB/BAJ
CHECKED BY:	MEJ
SHEET NO.:	AE213

EI LIBRARY #141
AE01-B

AI ED TECH SM. GROUP #135A
AE01-B, AE01-C