

J1
1/4"=1'-0"
CORR #18 / 182
AEO1-B

A1
1/4"=1'-0"
CORR #15
AEO1-B

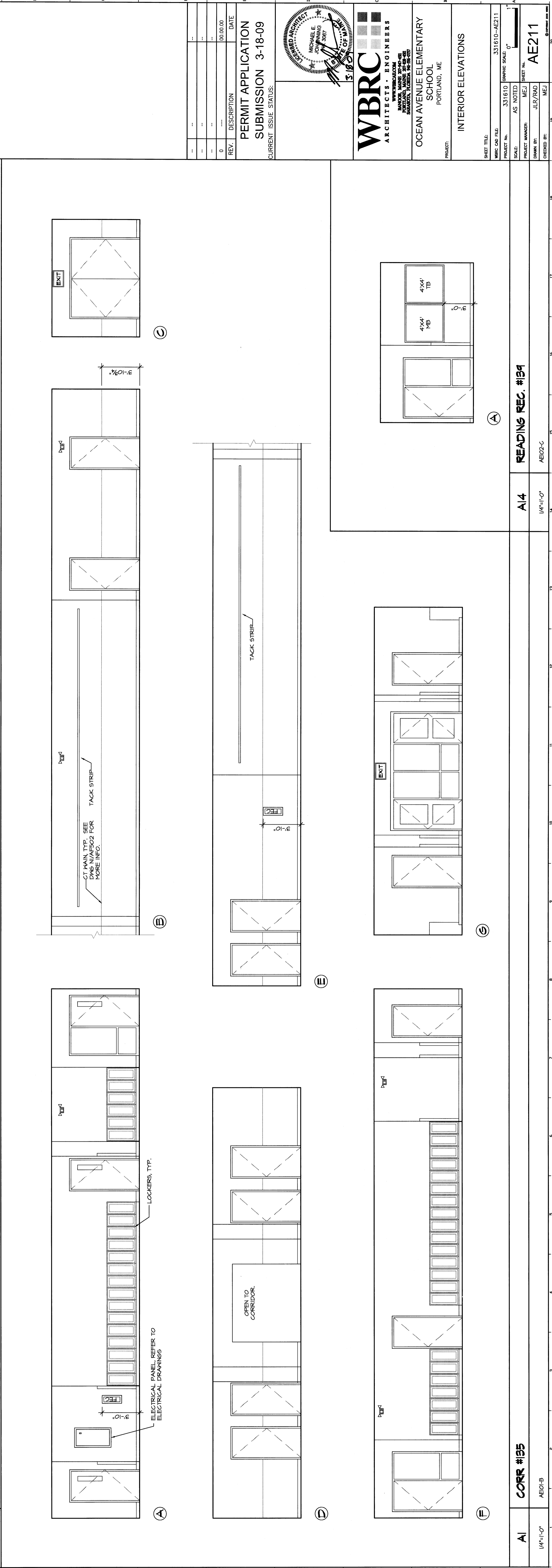
E
1/4"=1'-0"
CORR #15
AEO1-B

D
1/4"=1'-0"
CORR #15
AEO1-B

C
1/4"=1'-0"
CORR #15
AEO1-B

B
1/4"=1'-0"
CORR #15
AEO1-B

A
1/4"=1'-0"
CORR #15
AEO1-B



J1
1/4"=1'-0"
CORR #18 / 182
AEO1-B

A1
1/4"=1'-0"
CORR #15
AEO1-B

E
1/4"=1'-0"
CORR #15
AEO1-B

D
1/4"=1'-0"
CORR #15
AEO1-B

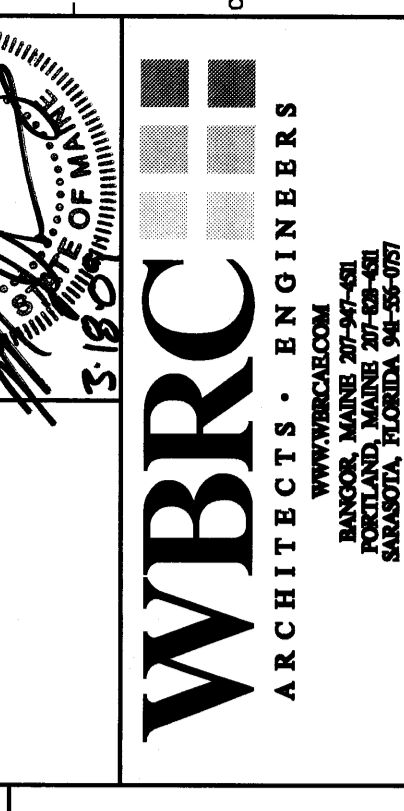
C
1/4"=1'-0"
CORR #15
AEO1-B

B
1/4"=1'-0"
CORR #15
AEO1-B

A
1/4"=1'-0"
CORR #15
AEO1-B

REV.	DESCRIPTION	DATE
0		00.00.00

PERMIT APPLICATION
SUBMISSION 3-18-09
CURRENT ISSUE STATUS:



WBRC
ARCHITECTS ENGINEERS
MANOR MADE ARCHITECTS
ANNAPOLIS, MARYLAND
OCEAN AVENUE ELEMENTARY
SCHOOL
PORTLAND, ME

SHEET FILE	331610-AE211
PROJECT NO.	331610
SCALE	AS NOTED
PROJECT MANAGER	MEJ
DRAWN BY	JLR/RAD
CHECKED BY	MEJ
SHEET NO.	AE211

INTERIOR ELEVATIONS

READING REC. #189
A14
1/4"=1'-0"
AE02-C