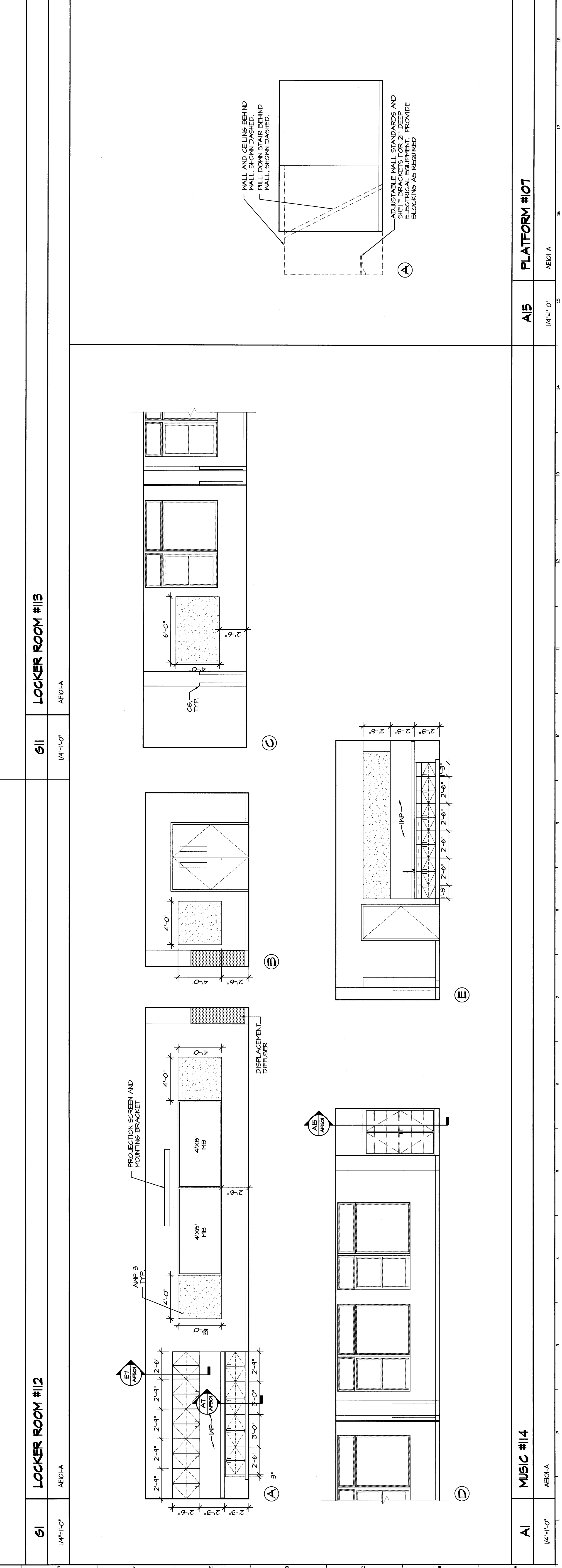
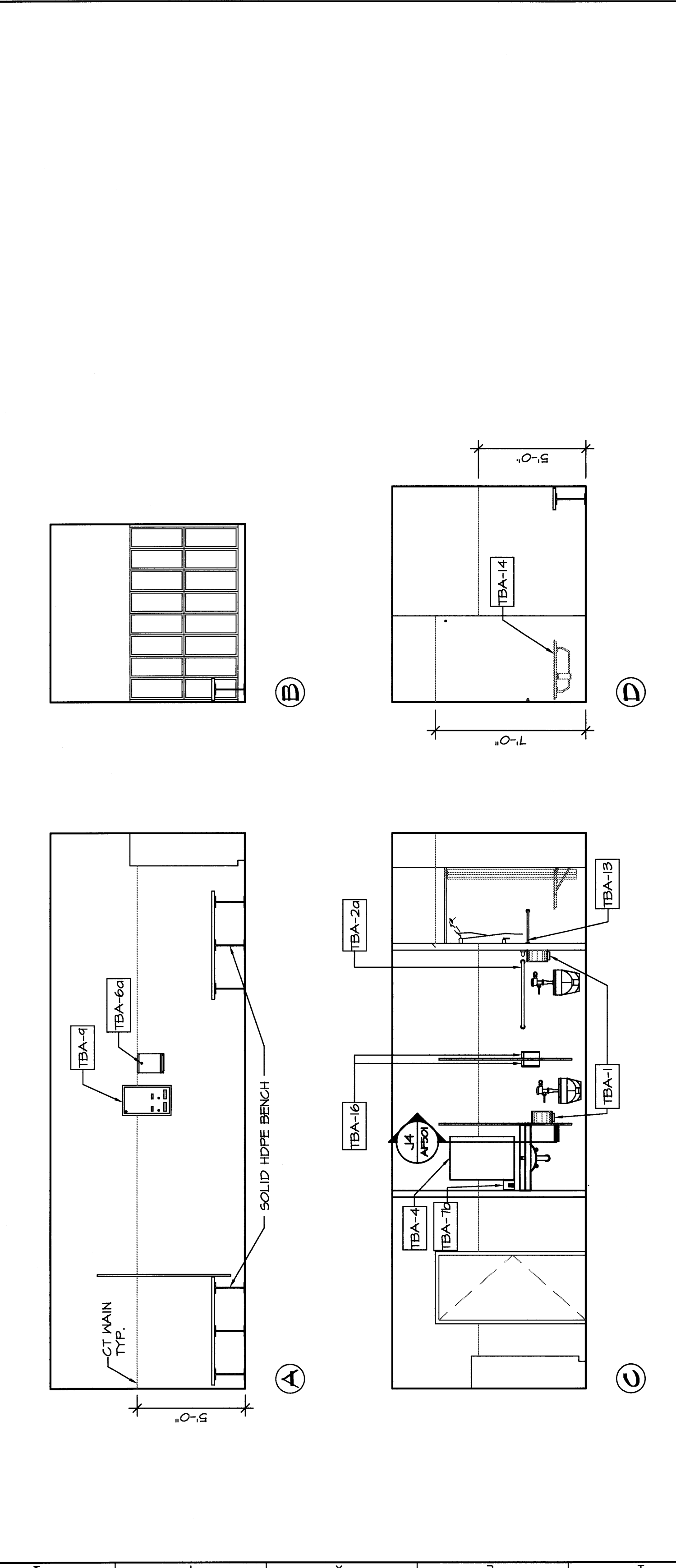
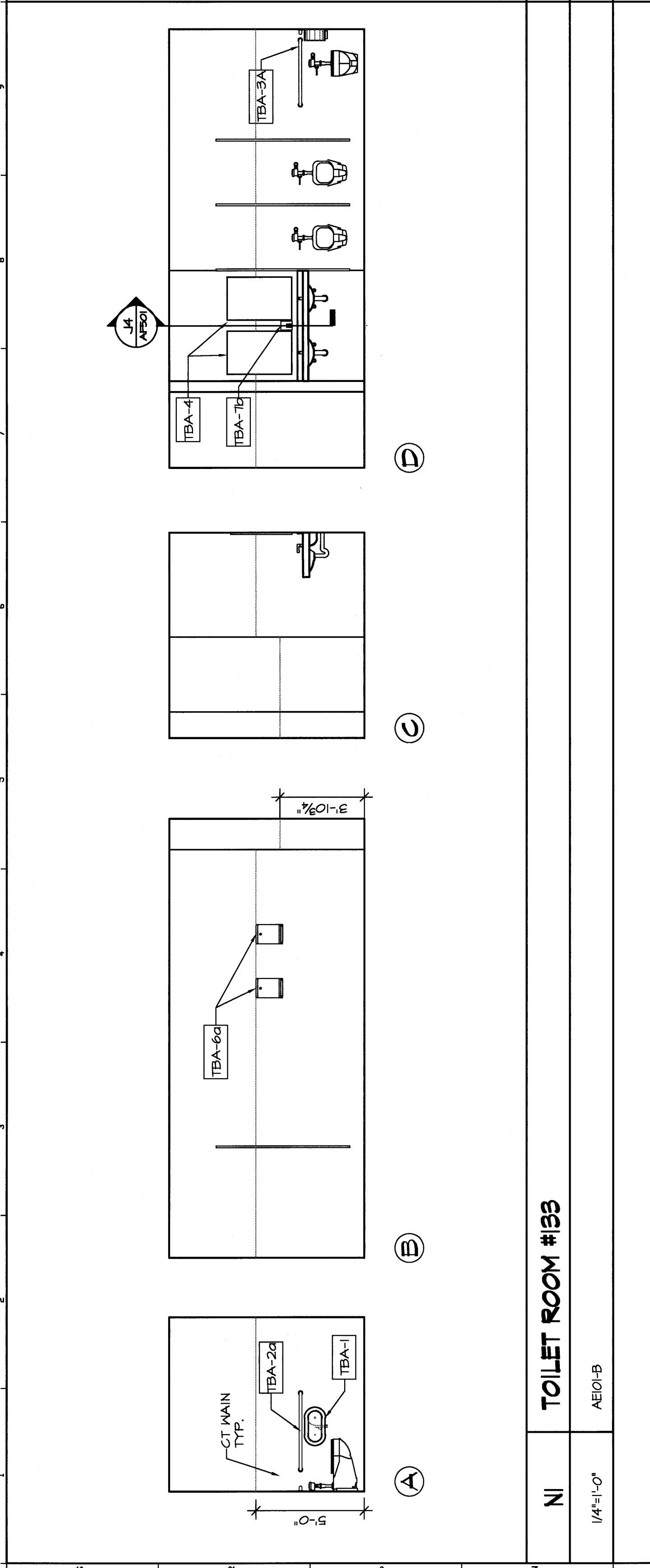
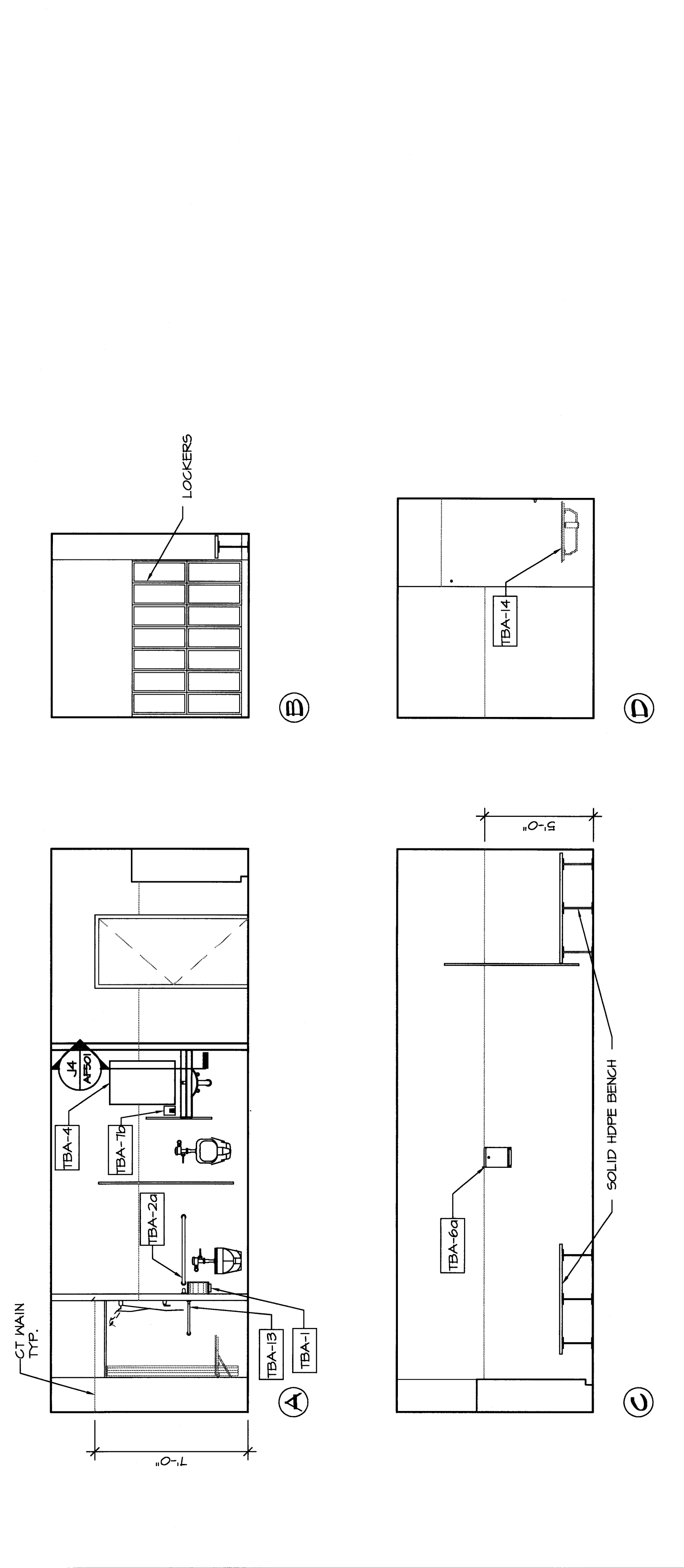
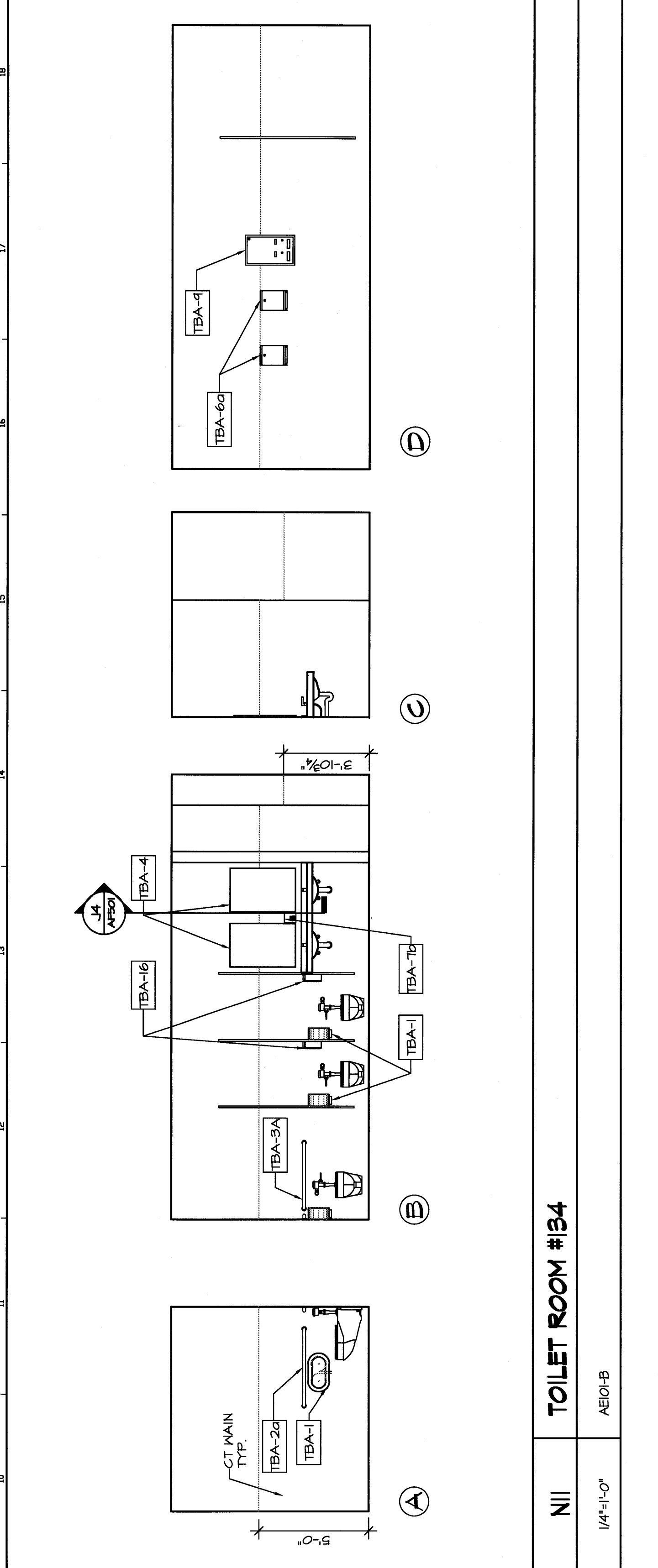


- GENERAL INTERIOR ELEVATIONS NOTES:**
- REFER TO ARCHITECTURAL ABBREVIATIONS ON SHEET G1002 FOR ALL ABBREVIATIONS
  - REFER TO K1/AE205 FOR TYPICAL TOILET ACCESSORY LEGEND AND MOUNTING HEIGHT INFORMATION
  - G.C. SHALL PROVIDE AND INSTALL BLOCKING BRACKETS FOR THE PROPER INSTALLATION OF ALL CASEWORK (BOTH CONTRACTOR AND OWNER SUPPLIED) MISCELLANEOUS VISUAL DISPLAY SUCH SUPPORTS ARE SHOWN OR NOT. G.C. TO COORDINATE BLOCKING REQUIREMENTS OF OWNER SUPPLIED ITEMS WITH THE OWNER.
  - REFER TO AEMT FOR ALL DOOR TYPES, STYLE AND FRAME STYLES
  - ALL EQUIPMENT, CASEWORK, ETC TO BE CSI/C, UNO.
  - REFER TO DIVISION 6 SPECIFICATION FOR DETAILED INFORMATION RELATED TO MILLWORK, WOOD CABINETS.
  - CABINETS SHOWN TO ILLUSTRATE INTENT. IT IS THE CONTRACTOR'S RESPONSIBILITY TO VERIFY THE FULL EXTENT WITHOUT INTERFERENCE SUCH AS HARDWARE.
  - ALL FILLER PANELS AND FINISHED END PANELS TO MATCH WOOD CABINETS IN SPECIES AND FINISH.
  - "CT" DENOTES CORNER GUARD LOCATIONS.
  - "CG" DENOTES CORNER GUARD LOCATIONS.
  - AGBBER PANELS GRAPHICALLY INDICATE VERTICALLY. REFER TO SPECIFICATIONS FOR GRAIN DIRECTION NOT SHOWN.



**WBRC**  
ARCHITECTS - ENGINEERS  
333 BROADWAY, SUITE 200  
PORTLAND, ME 04102-2000  
PHONE: 603.761.1111  
FAX: 603.761.1112  
WWW.WBRC-ARCHITECTS.COM

**PERMIT APPLICATION**  
**SUBMISSION 3-18-09**  
CURRENT ISSUE STATUS:

| REV. | DESCRIPTION | DATE     |
|------|-------------|----------|
| 0    |             | 00.00.00 |

**PROJECT:** OCEAN AVENUE ELEMENTARY SCHOOL  
PORTLAND, ME

**INTERIOR ELEVATIONS**

SHEET TITLE: INTERIOR ELEVATIONS  
WBRC CAD FILE: 331610-INT-01  
PROJECT NO.: 331610  
SHEET NO.: 01  
SCALE: AS NOTED  
PROJECT MANAGER: JLB/RAJ  
DRAWN BY: JLB/RAJ  
CHECKED BY: JLB/RAJ

|            |                         |        |
|------------|-------------------------|--------|
| <b>A1</b>  | <b>MUSIC #114</b>       | AEI0-A |
| <b>A15</b> | <b>PLATFORM #107</b>    | AEI0-A |
| <b>61</b>  | <b>LOCKER ROOM #12</b>  | AEI0-A |
| <b>611</b> | <b>LOCKER ROOM #13</b>  | AEI0-A |
| <b>N11</b> | <b>TOILET ROOM #133</b> | AEI0-B |
| <b>N11</b> | <b>TOILET ROOM #134</b> | AEI0-B |