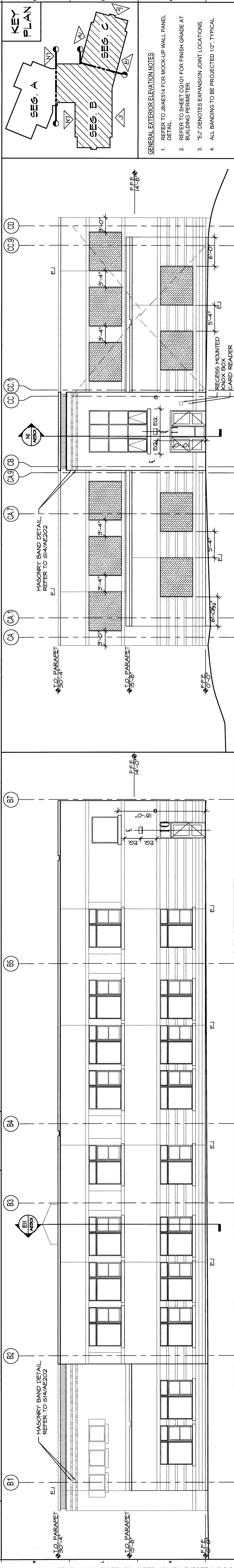
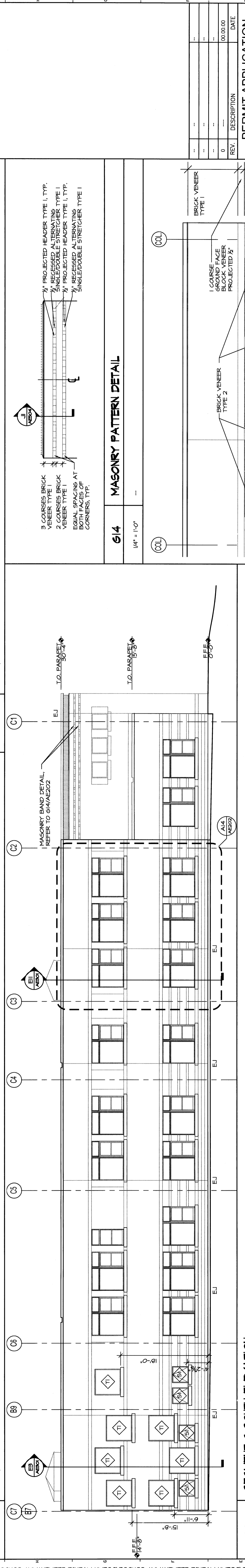


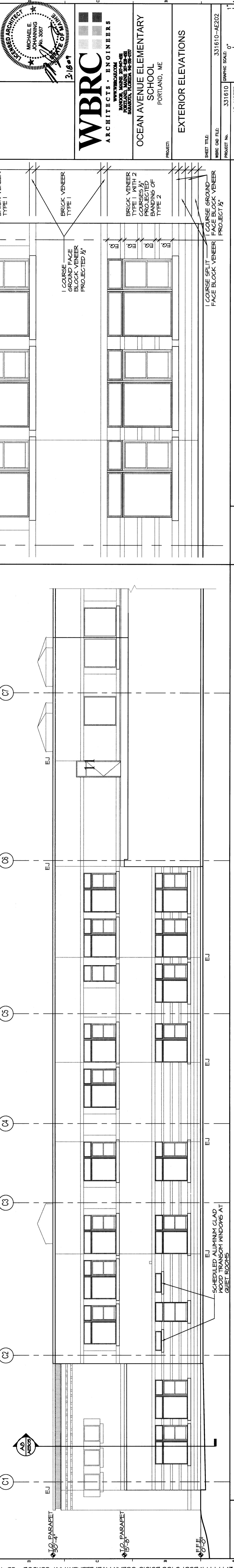
**SEGMENT B NORTH ELEVATION**  
 1/8" = 1'-0"  
 AE01-A, AE01-B, AE02-A, AE02-B



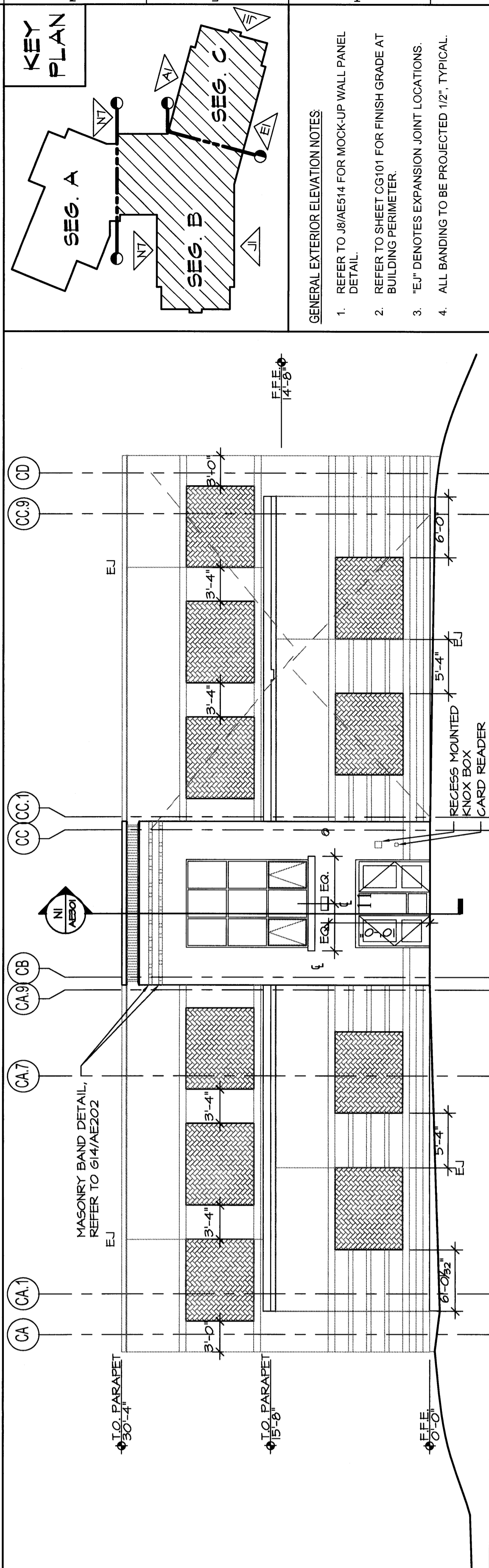
**SEGMENT B SOUTH ELEVATION**  
 1/8" = 1'-0"  
 AE01-B, AE02-B



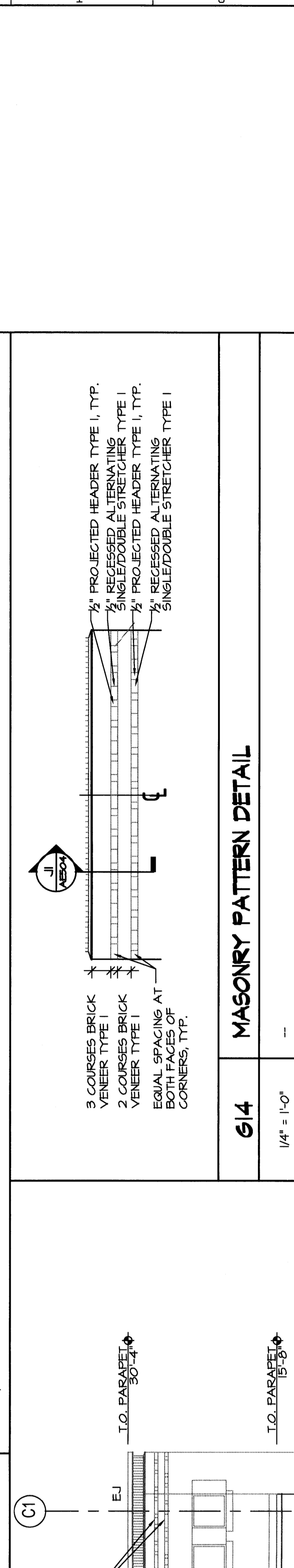
**SEGMENT C SOUTH ELEVATION**  
 1/8" = 1'-0"  
 AE01-C, AE01-C, AE02-B, AE02-C



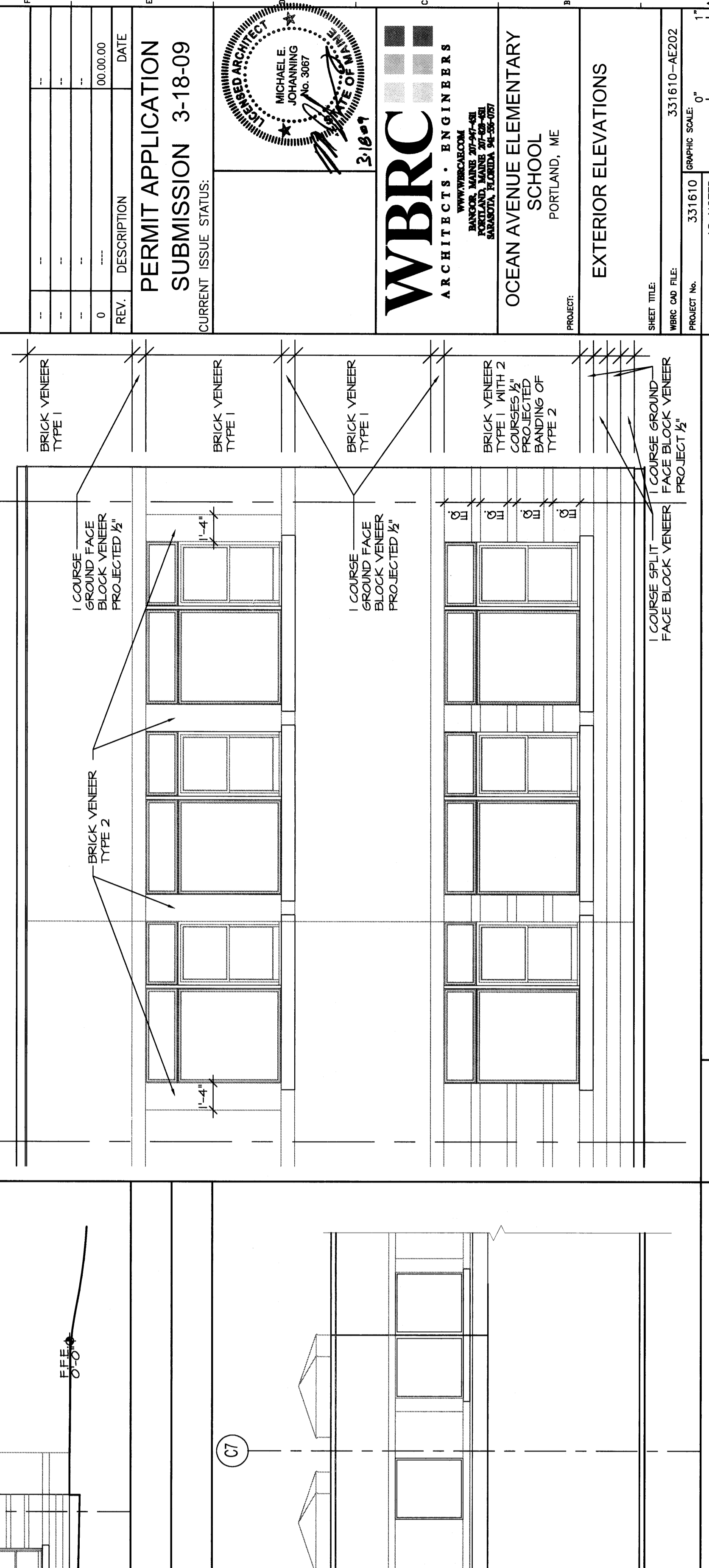
**SEGMENT C NORTH ELEVATION**  
 1/8" = 1'-0"  
 AE01-C, AE02-C



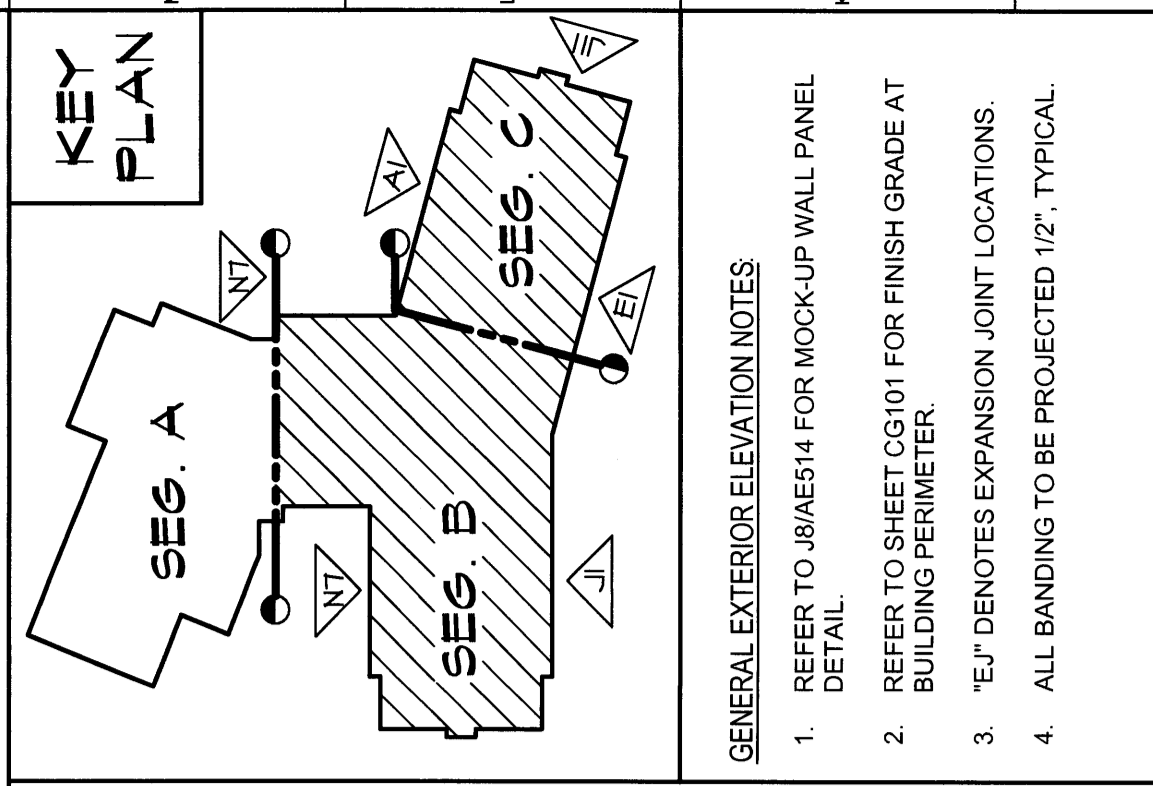
**SEGMENT C EAST ELEVATION**  
 1/8" = 1'-0"  
 AE01-C, AE02-C



**614 MASONRY PATTERN DETAIL**  
 1/4" = 1'-0"



**A14 MASONRY PATTERN DETAIL**  
 1/4" = 1'-0"



**GENERAL EXTERIOR ELEVATION NOTES**

1. REFER TO JB16514 FOR MOCK-UP WALL PANEL DETAIL
2. REFER TO SHEET C6101 FOR FINISH GRADE AT BUILDING PERIMETER
3. "E" DENOTES EXPANSION JOINT LOCATIONS
4. ALL BANDING TO BE PROJECTED 1/2" TYPICAL

REV.	DESCRIPTION	DATE
0	00.00.00	

**PERMIT APPLICATION**  
**SUBMISSION 3-18-09**  
 CURRENT ISSUE STATUS:



**WBRC ARCHITECTS ENGINEERS**  
 OCEAN AVENUE ELEMENTARY SCHOOL  
 PORTLAND, ME

**EXTERIOR ELEVATIONS**  
 SHEET TITLE: 331610-AE202  
 PROJECT No.: AS NOTED  
 SCALE: MEJ  
 SHEET No.: AE202  
 DRAWN BY: MEJ  
 CHECKED BY: MEJ