

GENERAL PLAN NOTES

1. ALL INTERIOR PARTITION TYPES ARE 1/2" TYPE UNLESS OTHERWISE NOTED. SEE SHEET 331810-AE102-A FOR STRUCTURAL DRAWINGS FOR INTERIOR CMU LOAD BEARING WALLS. ALL PARTITION TYPES ARE RUNNING BOND UNLESS OTHERWISE NOTED.
2. REFER TO ALL DRAWINGS INCLUDING ARCHITECTURAL, MECHANICAL, ELECTRICAL AND PLUMBING DRAWINGS FOR ADDITIONAL GENERAL NOTES, ABBREVIATIONS AND SYMBOLS.
3. ALL DRAWINGS ARE OF EQUAL IMPORTANCE IN DEFINING THE WORK OF THE CONTRACT. DOCUMENTS OF THE SAME DATE SHALL BE CONSIDERED TO BE OF EQUAL IMPORTANCE. IN THE EVENT OF A DISCREPANCY WITHIN AND BETWEEN THE DRAWINGS, THE DRAWINGS SHALL TAKE PRECEDENCE OVER THE SPECIFICATIONS. THE CONTRACTOR SHALL NOTIFY ARCHITECT FOR CLARIFICATION PRIOR TO INSTALLATION OF SAID WORK. ANY WORK NOT SHOWN ON THESE DRAWINGS SHALL BE THE RESPONSIBILITY OF THE CONTRACTOR AT ITS EXPENSE AND AT NO ADDITIONAL COST TO OWNER OR ARCHITECT.
4. DO NOT SCALE DRAWINGS. THE DRAWINGS ARE NOT NECESSARILY TO SCALE. USE GIVEN DIMENSIONS AND DIMENSIONS AT THE JOB SITE PRIOR TO THE START OF CONSTRUCTION. IF DISCREPANCIES ARE FOUND, NOTIFY ARCHITECT IMMEDIATELY. ALL DIMENSIONS ARE GIVEN TO FACE OF THE WORK. ALL DIMENSIONS ARE GIVEN TO FACE OF STUD. FACE OF MASONRY OR FACE OF CONCRETE ALL DIMENSIONS ARE GIVEN TO FACE OF STUD. SEE WALL SECTIONS AND PARTITION TYPES FOR EXACT CONSTRUCTION.
5. LOCATE DOOR FRAMES IN MASONRY CONSTRUCTION ON THE SIDE OF THE WALL TOWARD THE ROOM WHICH THE DOOR SWINGS INTO UNLESS OTHERWISE NOTED.
6. PROVIDE BULLNOSE OUTSIDE VERTICAL CMU CORNERS AT CONDITIONS WITH EXPOSED MASONRY UNLESS OTHERWISE NOTED.
7. SEE SHEET 331810-G004 FOR REFERENCE PLAN AND SHEET 331810-G005 FOR FINISH FLOOR PLAN. MECHANICAL, ELECTRICAL AND PLUMBING PENETRATIONS THROUGH FIRE RATED CONSTRUCTION SHALL BE ELEVATED AND FIRE RATED AND/OR HAVE FIRE DAMPERS TO MAINTAIN THE RATED FIRE RATING OF THE CONSTRUCTION.
8. ALL FITTED FLOOR AREAS SHOWN WITH BENCH LINES SHALL SLOPE AT 1/4" PER FOOT UNLESS OTHERWISE NOTED. PROVIDE A SLAB DEPRESSION AT ALL FLOOR DRAINS WHERE FITTINGS ARE NOT SHOWN ON PLANS.
9. DETAILS NOT SHOWN ARE SIMILAR IN CHARACTER TO DETAILS SHOWN. THE CONTRACTOR SHALL VERIFY ALL DESIGN INTENT CANNOT BE DETERMINED CONSULT ARCHITECT BEFORE PROCEEDING WITH THE WORK.
10. FINISH FLOOR ELEVATIONS ARE TO TOP OF CONCRETE UNLESS OTHERWISE NOTED.
11. WHEN UNDIMENSIONED DOORS APPEAR IN PARTITIONS, THE DOOR WIDTH AND DOOR FRAME DETAILS DETERMINE THE LOCATION OF THE DOORS AND SPACING. SEE DETAIL IN SHEET A607 FOR THE TYPICAL SPACING.
12. ENLARGED PLANS FOR DIMENSIONS OF STAIRS, TOILETS AND ELEVATOR SHAFTS UNLESS OTHERWISE NOTED.
13. ELEVATOR SUBCONTRACTOR SHALL ASSIST G.C. AND VERIFY OPENINGS PRIOR TO FORMING. NOTIFY ARCHITECT OF ANY MODIFICATIONS PRIOR TO FORMING.
14. CONTRACTOR SHALL PROVIDE STIFFENERS, BRACING, BACKING PLATES AND SUPPORTING BRACKETS REQUIRE FOR ALL TOILETS, TOILET PARTITIONS AND TOILET ROOM ACCESSORIES, TOILET PARTITIONS AND MISCELLANEOUS EQUIPMENT WHETHER SUCH SUPPORTS ARE SHOWN OR NOT.
15. INSTALL ALL RECESSED CABINETS, PANELS, BOXES AND FITTINGS IN PARTITIONS TO MAINTAIN THE FIRE RATED CONSTRUCTION.
16. ALL HOUSEKEEPING CONCRETE PADS ARE TO BE 4" HIGH MINIMUM UNLESS OTHERWISE NOTED.
17. G.C. SHALL COORDINATE ALL EQUIPMENT BASE AND CONNECTIONS WITH ALL MECHANICAL, ELECTRICAL AND ELECTRICAL CONTRACTORS. INSTALL THE PADS BENEATH THE FULL PROJECTED AREA OF EQUIPMENT.
18. G.C. SHALL COORDINATE ALL MECHANICAL AND ELECTRICAL FLOOR, ROOF AND WALL SLEEVES AND ALL PENETRATIONS THROUGH ALL STRUCTURAL, FIRE PROTECTION, ELECTRICAL, STRUCTURAL AND ARCHITECTURAL DRAWINGS.
19. REFER TO MECHANICAL AND ELECTRICAL CONTRACTORS DRAWINGS AND MANUFACTURERS TEMPLATE DRAWINGS FOR ALL MECHANICAL AND ELECTRICAL EQUIPMENT. ALL EQUIPMENT SHALL BE INSTALLED ON ISOLATION SPRINGS, ISOLATION, SPRING ISOLATION, ETC. NOT SHOWN ON THE DRAWINGS.

PERMIT APPLICATION SUBMISSION 3-18-09

REV. 0 00:00:00 DATE

PROJECT NORTH

WBRC ARCHITECTS - ENGINEERS

OCEAN AVENUE ELEMENTARY SCHOOL

PORTLAND, ME

SECOND FLOOR PLAN SEG. A

331810-AE102-A

AS NOTED

MEJ

AE102-A

MEJ

MEJ

MEJ

MEJ

MEJ

MEJ

MEJ

MEJ

MEJ

MEJ

MEJ

MEJ

MEJ

MEJ

MEJ

MEJ

MEJ

MEJ

MEJ

MEJ

MEJ

MEJ

MEJ

MEJ

MEJ

MEJ

MEJ

MEJ

MEJ

MEJ

MEJ

MEJ

MEJ

MEJ

MEJ

MEJ

MEJ

MEJ

MEJ

MEJ

MEJ

MEJ

MEJ

MEJ

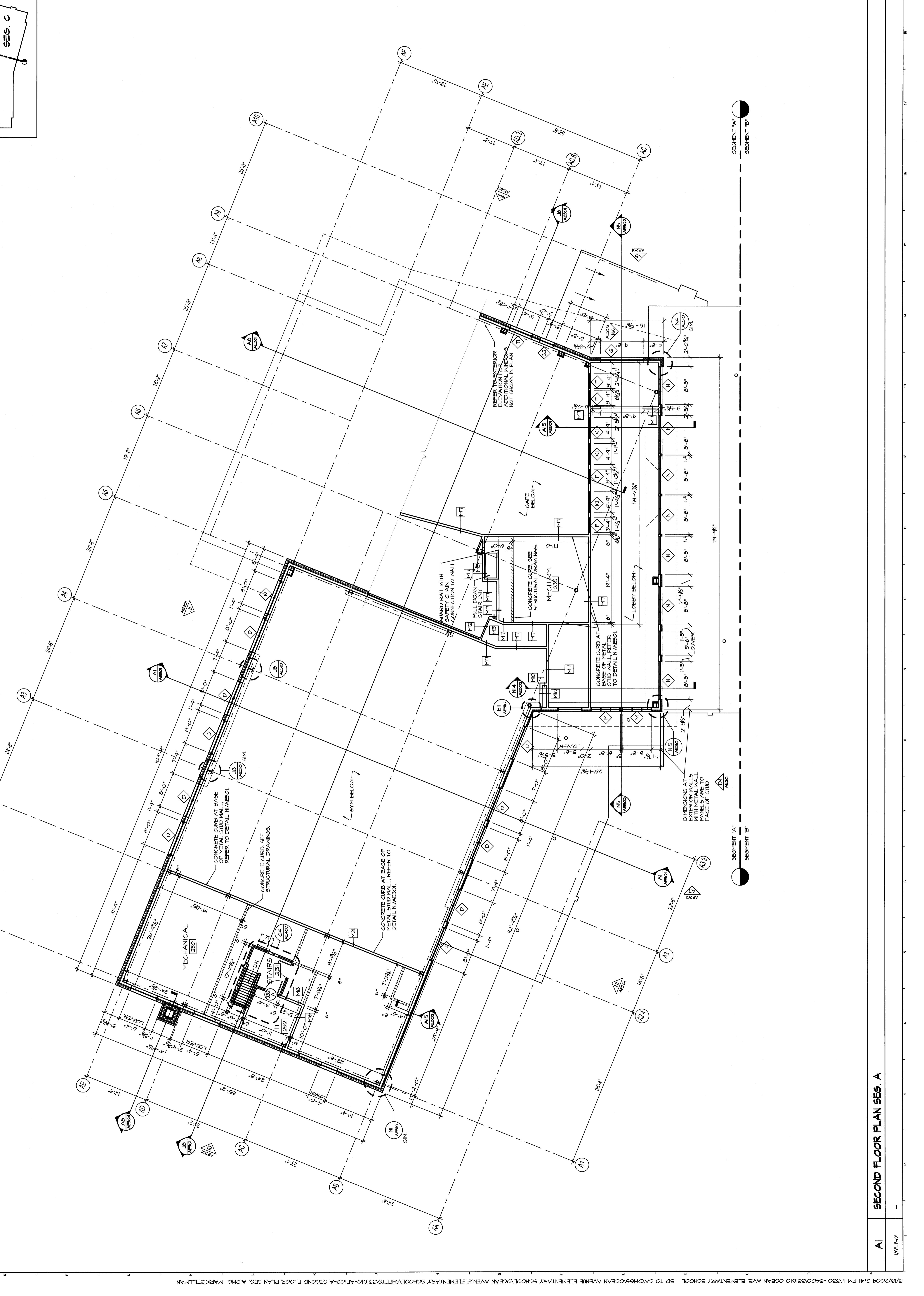
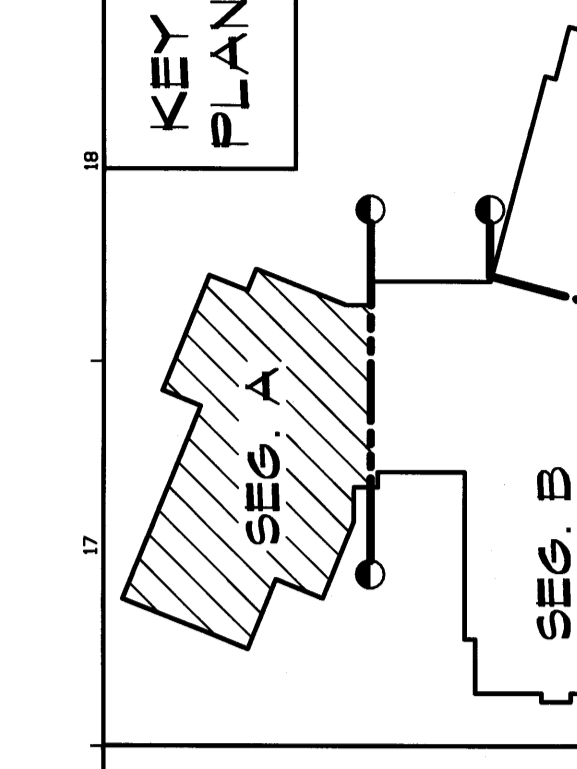
MEJ

MEJ

MEJ

MEJ

MEJ



SEGMENT 'A'

SEGMENT 'B'

SEGMENT 'C'

SEGMENT 'D'

SEGMENT 'E'

SEGMENT 'F'

SEGMENT 'G'

SEGMENT 'H'

SEGMENT 'I'

SEGMENT 'J'