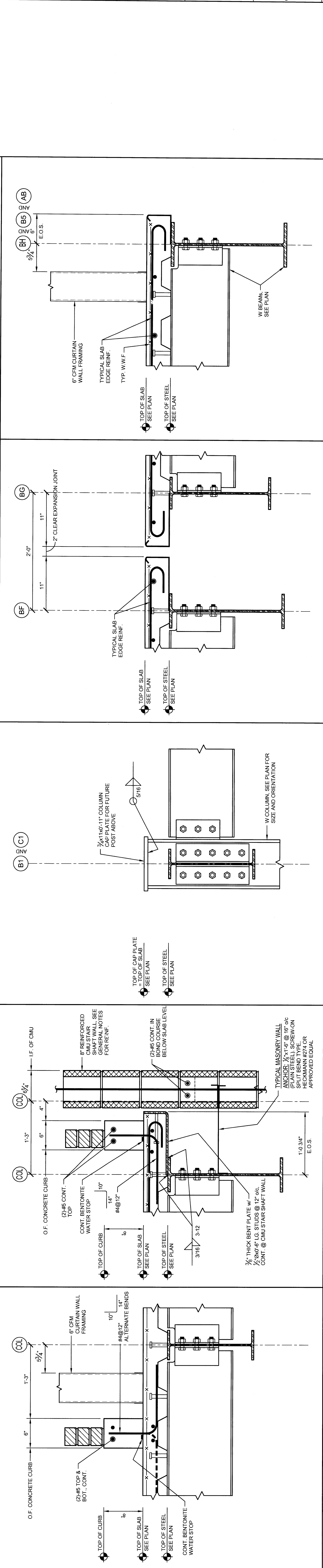
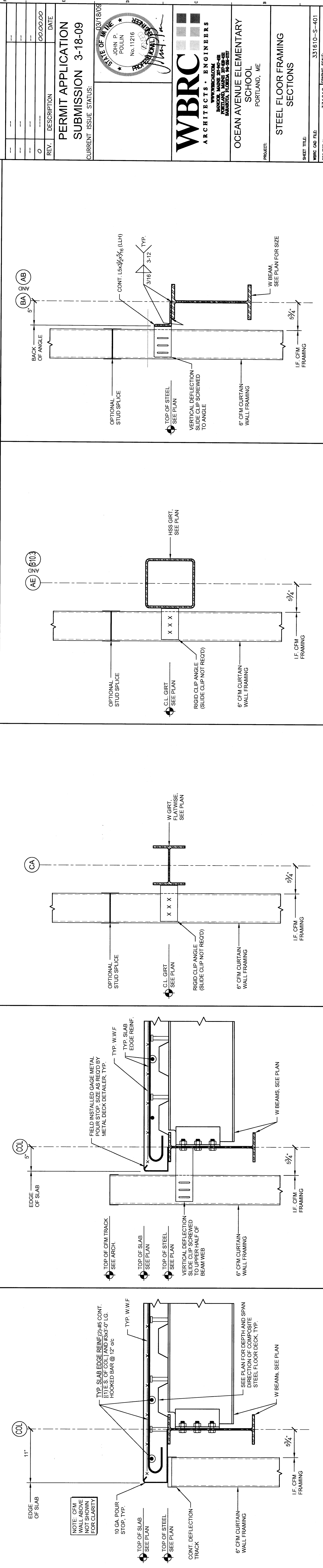


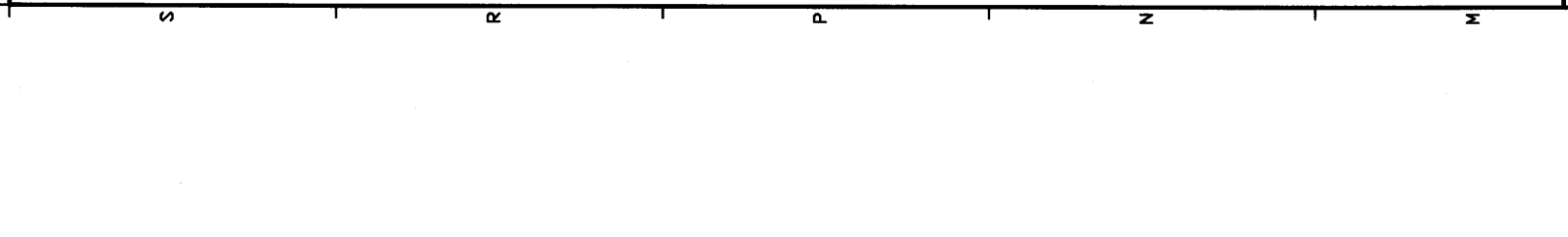
M1 SECTION
1 1/2" = 1'-0"



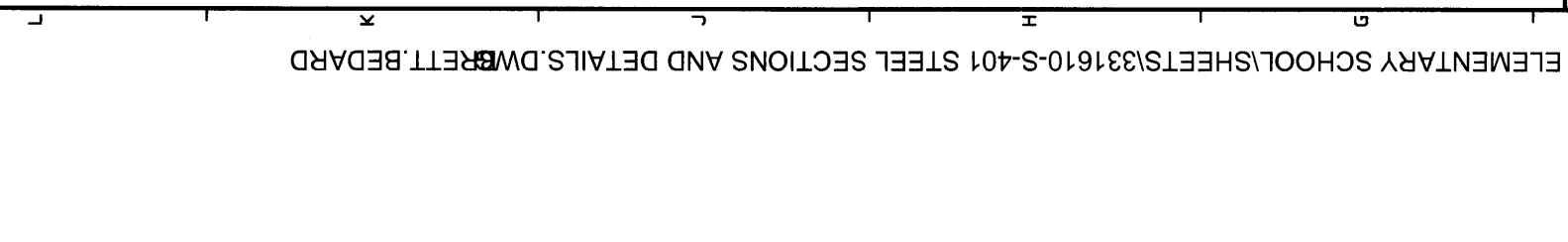
M5 SECTION
1 1/2" = 1'-0"



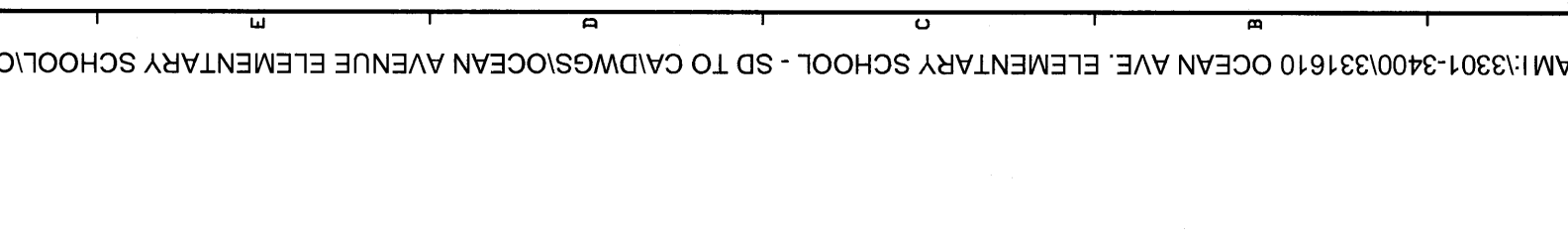
M8 SECTION
1 1/2" = 1'-0"



M12 SECTION
1 1/2" = 1'-0"



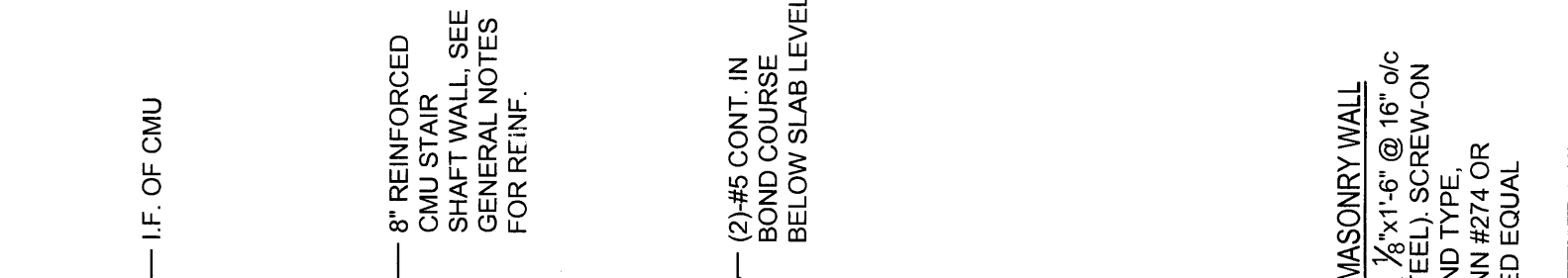
M15 SECTION
1 1/2" = 1'-0"



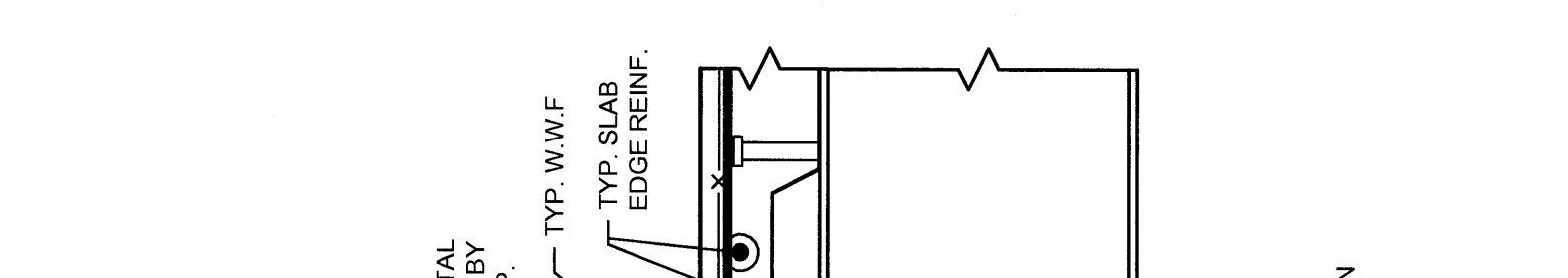
F1 SECTION
1 1/2" = 1'-0"



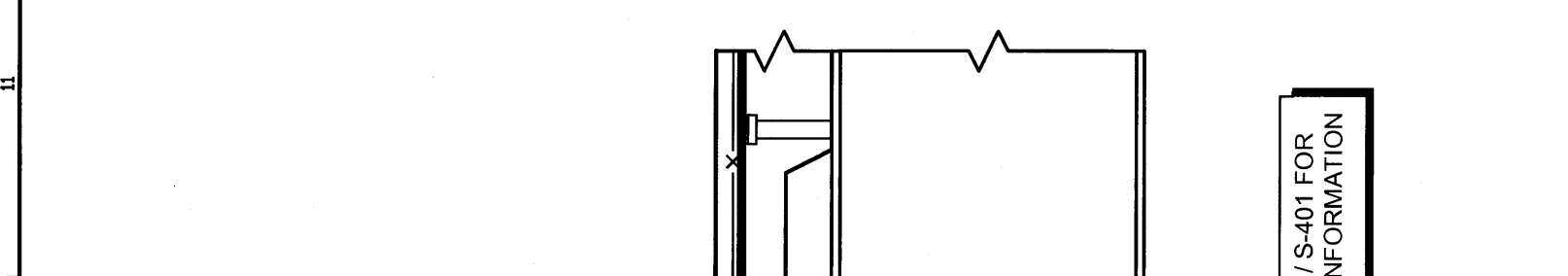
F5 SECTION
1 1/2" = 1'-0"



F8 SECTION
1 1/2" = 1'-0"



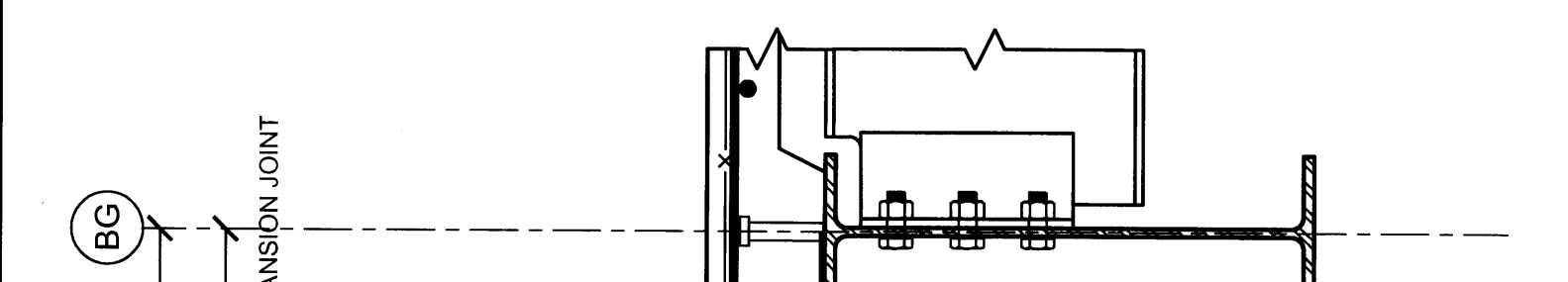
F12 SECTION
1 1/2" = 1'-0"



F15 SECTION
1 1/2" = 1'-0"



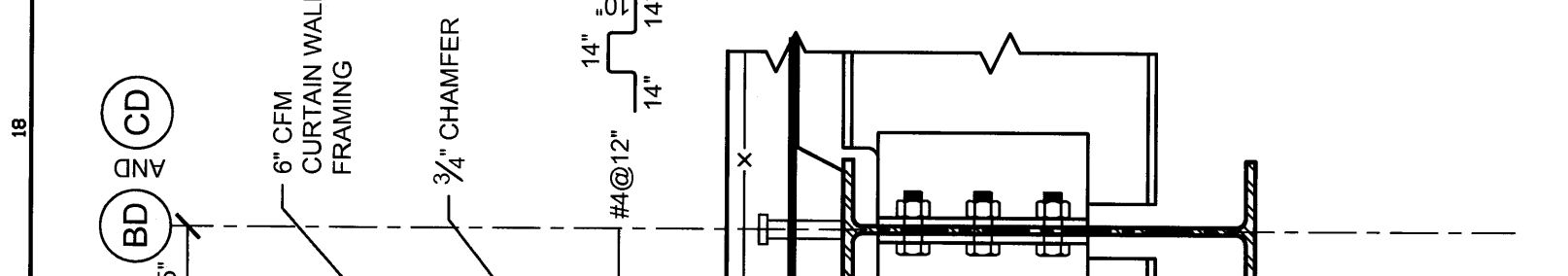
A1 SECTION
1 1/2" = 1'-0"



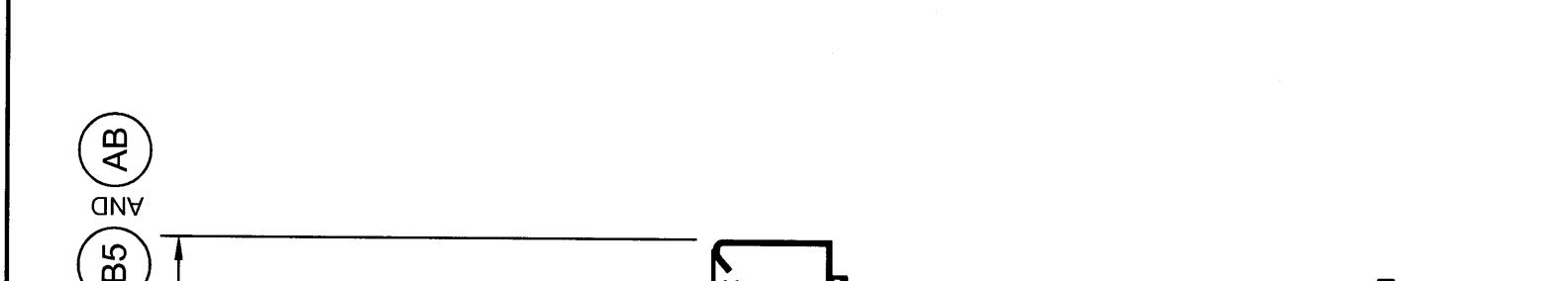
A5 SECTION
1 1/2" = 1'-0"



A8 SECTION
1 1/2" = 1'-0"



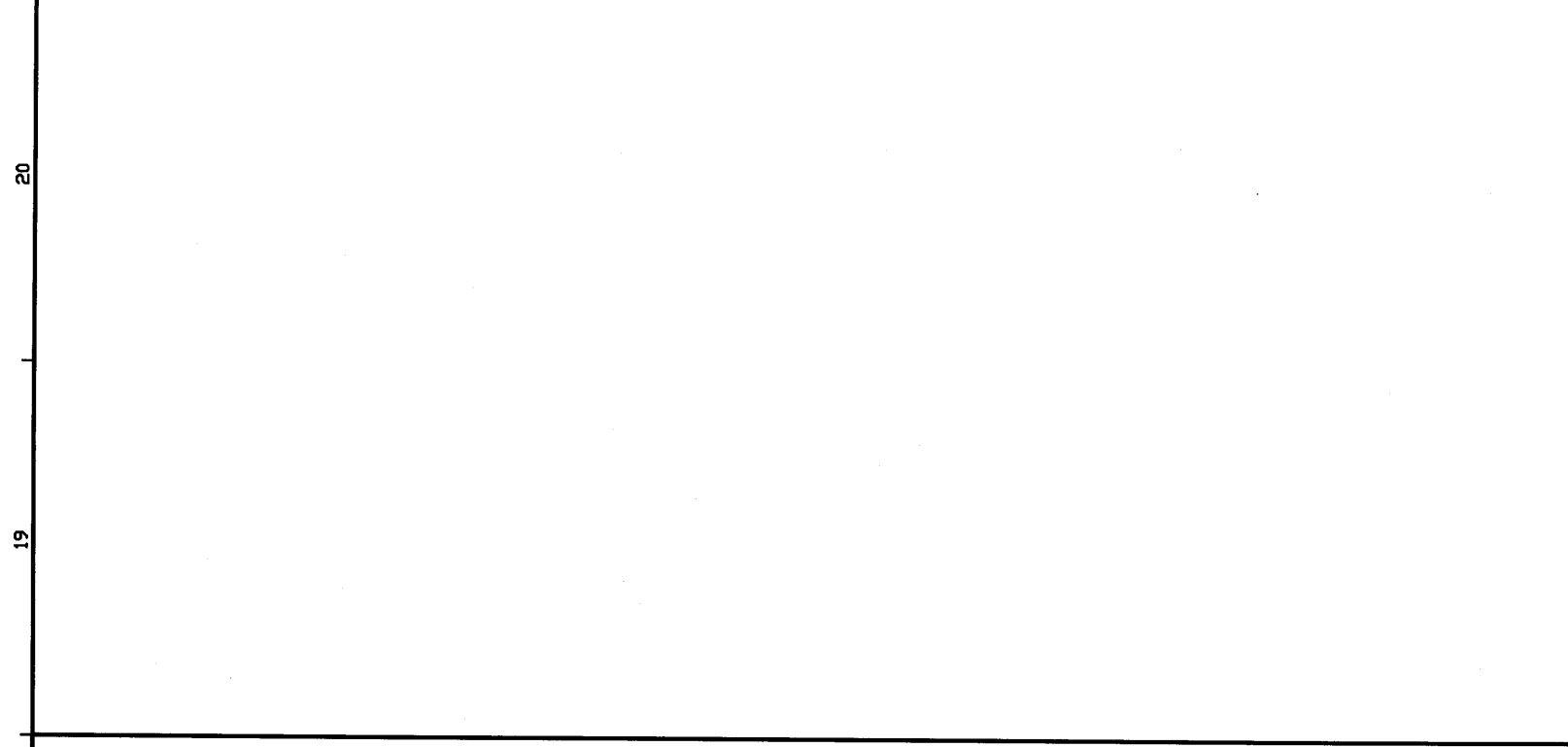
A12 SECTION
1 1/2" = 1'-0"



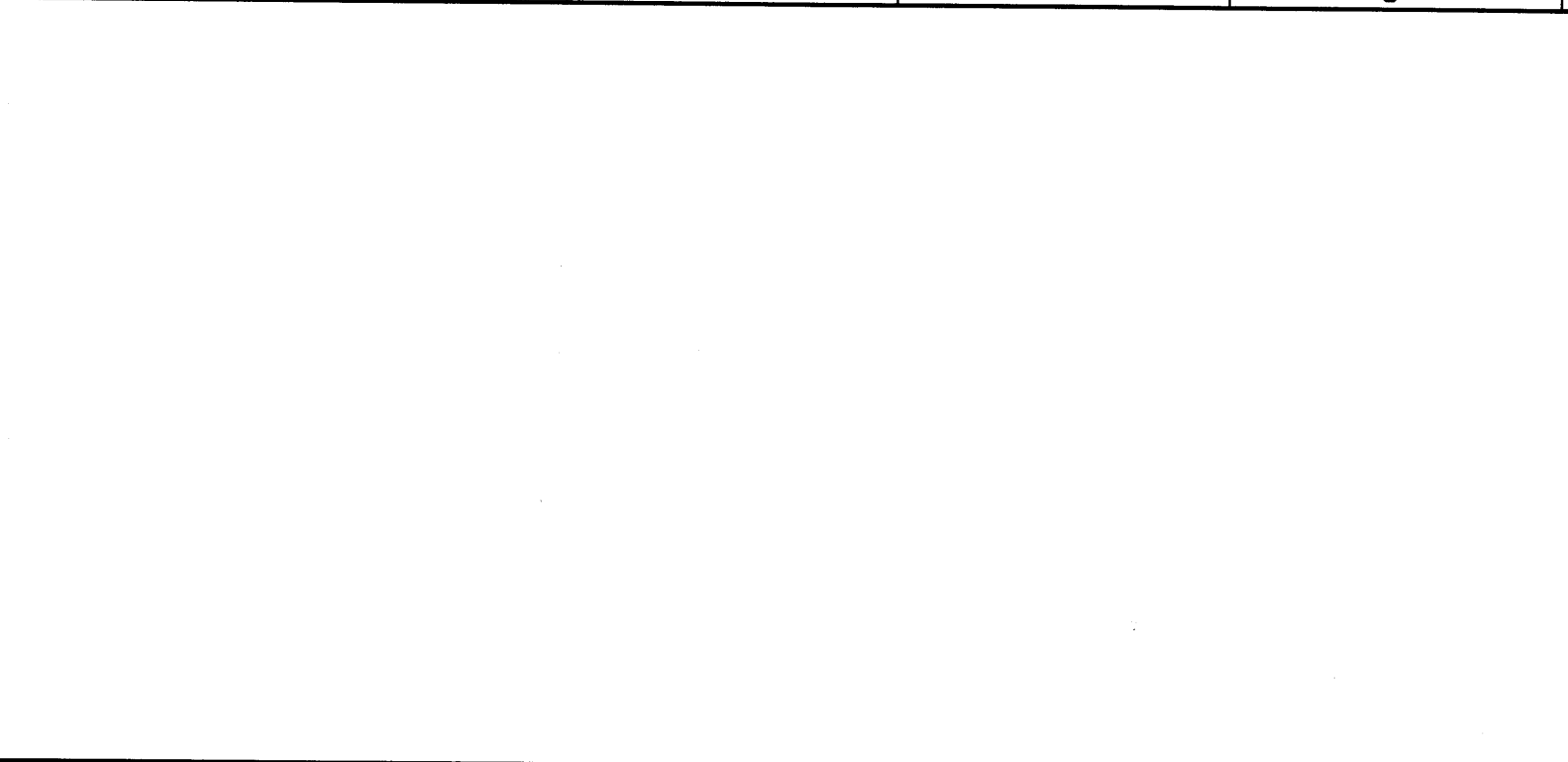
A15 SECTION
1 1/2" = 1'-0"



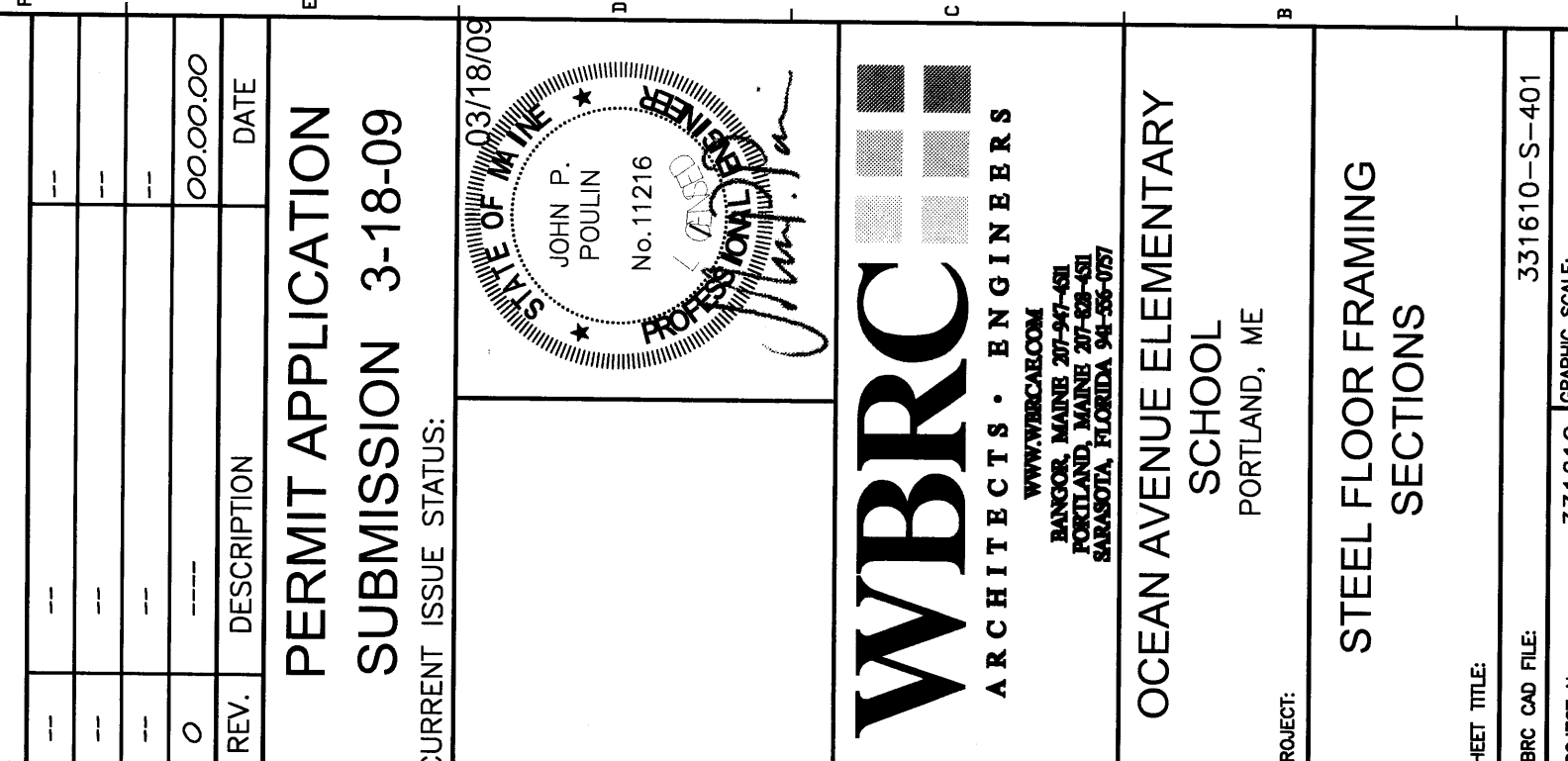
A15 SECTION
1 1/2" = 1'-0"



M15 SECTION
1 1/2" = 1'-0"



F15 SECTION
1 1/2" = 1'-0"



A15 SECTION
1 1/2" = 1'-0"

WBRC ARCHITECTS - ENGINEERS MANUEL W. BROWN, P.E. - 2007 1000 W. MAINE ST. - 2ND FL. PORTLAND, ME 04102	
PROJECT: OCEAN AVENUE ELEMENTARY SCHOOL PORTLAND, ME	
SHEET TITLE: STEEL FLOOR FRAMING SECTIONS	
SHEET NO.: S-401	DATE: 3-18-09
PROJECT MANAGER: MEJ	CHECKED BY: JPD
SCALE: AS NOTED	DRAWING NO.: 331610-S-401