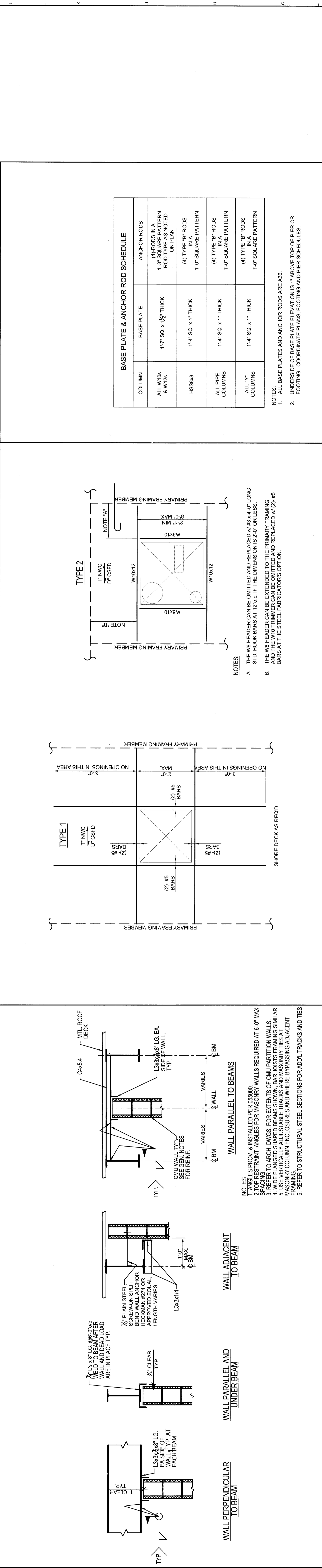
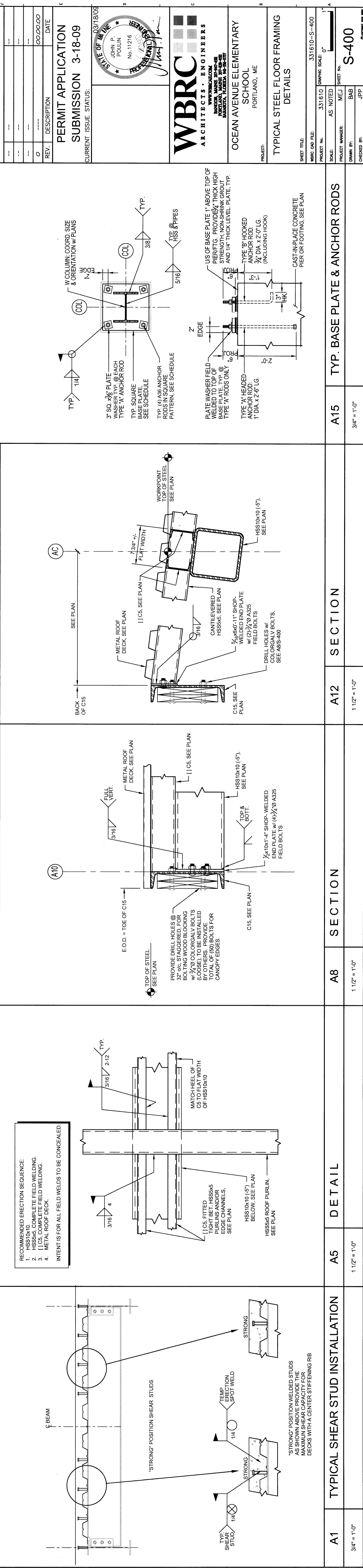


M1 SECTION 1 1/2" = 1'-0" TYPICAL CMU WALL LATERAL RESTRAINTS
 M5 SECTION 1 1/2" = 1'-0" TYPICAL CMU WALL RESTRAINTS
 M8 TYPICAL REINFORCING AT CMU OPENING 1 1/2" = 1'-0"
 M12 TYPICAL W-BEAM TO PIPE COL./HGR. 3/4" = 1'-0"
 M15 TYPICAL W-BEAM TO W GIRDER/COL. 3/4" = 1'-0"



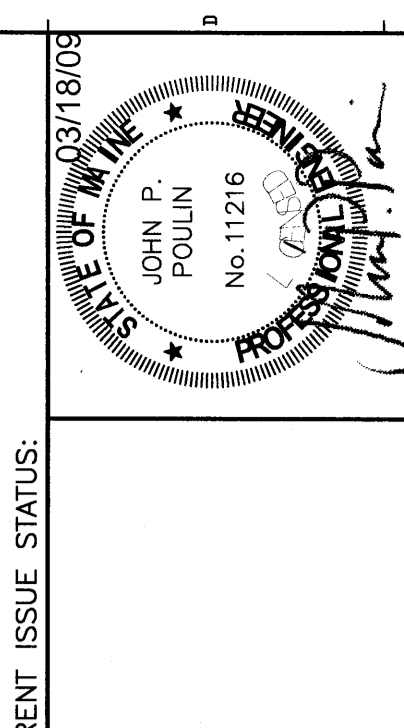
F1 WALL PERPENDICULAR TO BEAM 3/4" = 1'-0"
 F8 WALL PARALLEL TO BEAM 3/4" = 1'-0"
 F12 TYPICAL COMPOSITE FLOOR SLAB OPENINGS 3/4" = 1'-0"



A1 TYPICAL SHEAR STUD INSTALLATION 3/4" = 1'-0"
 A5 DETAIL 1 1/2" = 1'-0"
 A8 SECTION 1 1/2" = 1'-0"
 A12 SECTION 1 1/2" = 1'-0"
 A15 TYP. BASE PLATE & ANCHOR RODS 3/4" = 1'-0"

REV.	DESCRIPTION	DATE
0	PERMIT APPLICATION	00-00-00
1	PERMIT APPLICATION	00-00-00

PERMIT APPLICATION
 SUBMISSION 3-18-09
 CONCURRENT ISSUE STATUS:



WBRC
 ARCHITECTS & ENGINEERS
 100 W. MAIN ST., 3RD FLOOR
 PORTLAND, ME 04101-2000
 TEL: 603.761.1100
 FAX: 603.761.1101
 WWW.WBRC.COM

OCEAN AVENUE ELEMENTARY
 SCHOOL
 PORTLAND, ME

TYPICAL STEEL FLOOR FRAMING DETAILS
 SHEET TITLE: 331610
 SHEET NO.: S-400
 SCALE: AS NOTED
 PROJECT NUMBER: M.E.J.
 DRAWN BY: J.P.P.
 CHECKED BY: J.P.P.
 DATE: 3/18/09