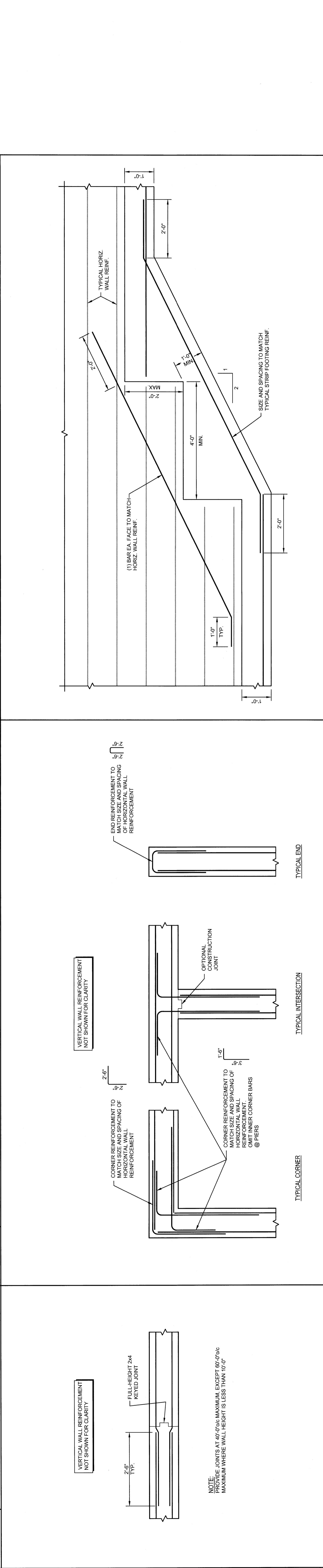
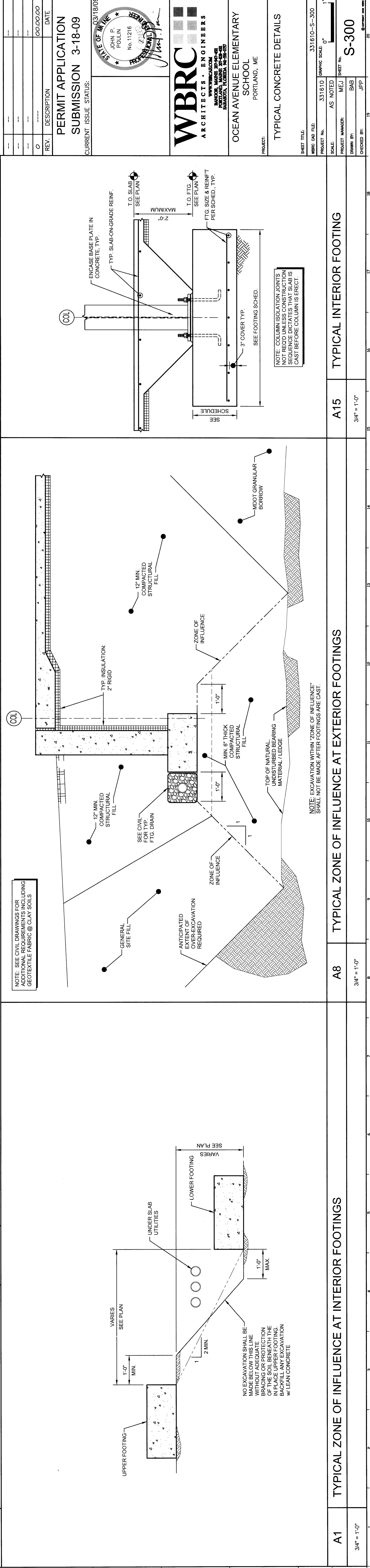


M1	TYPICAL EXTERIOR ENTRY LAYOUT	M5	TYPICAL EXTERIOR ENTRY SECTION	M12	TYPICAL INTERIOR PIER	M15	TYPICAL EXTERIOR PIER
3/4" = 1'-0"		3/4" = 1'-0"		3/4" = 1'-0"		3/4" = 1'-0"	



F1	TYPICAL WALL CONSTRUCTION JOINT	F5	TYPICAL FOUNDATION WALL HORIZONTAL REINFORCING	F12	TYPICAL STEPPED FOOTING CONSTRUCTION AND REINFORCING
3/4" = 1'-0"		3/4" = 1'-0"		3/4" = 1'-0"	



A1	TYPICAL ZONE OF INFLUENCE AT INTERIOR FOOTINGS	A8	TYPICAL ZONE OF INFLUENCE AT EXTERIOR FOOTINGS	A15	TYPICAL INTERIOR FOOTING	A16	TYPICAL INTERIOR FOOTING
3/4" = 1'-0"		3/4" = 1'-0"		3/4" = 1'-0"		3/4" = 1'-0"	

PERMIT APPLICATION
SUBMISSION 3-18-09
 CURRENT ISSUE STATUS:

WBRC ARCHITECTS - ENGINEERS
 100 WATER STREET
 PORTLAND, ME 04101-2000
 TEL: 603.761.1111
 FAX: 603.761.1112
 WWW.WBRC.COM

OCEAN AVENUE ELEMENTARY SCHOOL
 PORTLAND, ME

TYPICAL CONCRETE DETAILS

SHEET TITLE: 331610-S-300
 PROJECT No.: 331610
 SCALE: AS NOTED
 DATE: 00.00.00
 PROJECT MANAGER: M.E.J.
 DRAWN BY: BAB
 CHECKED BY: JFP
 SHEET No.: S-300