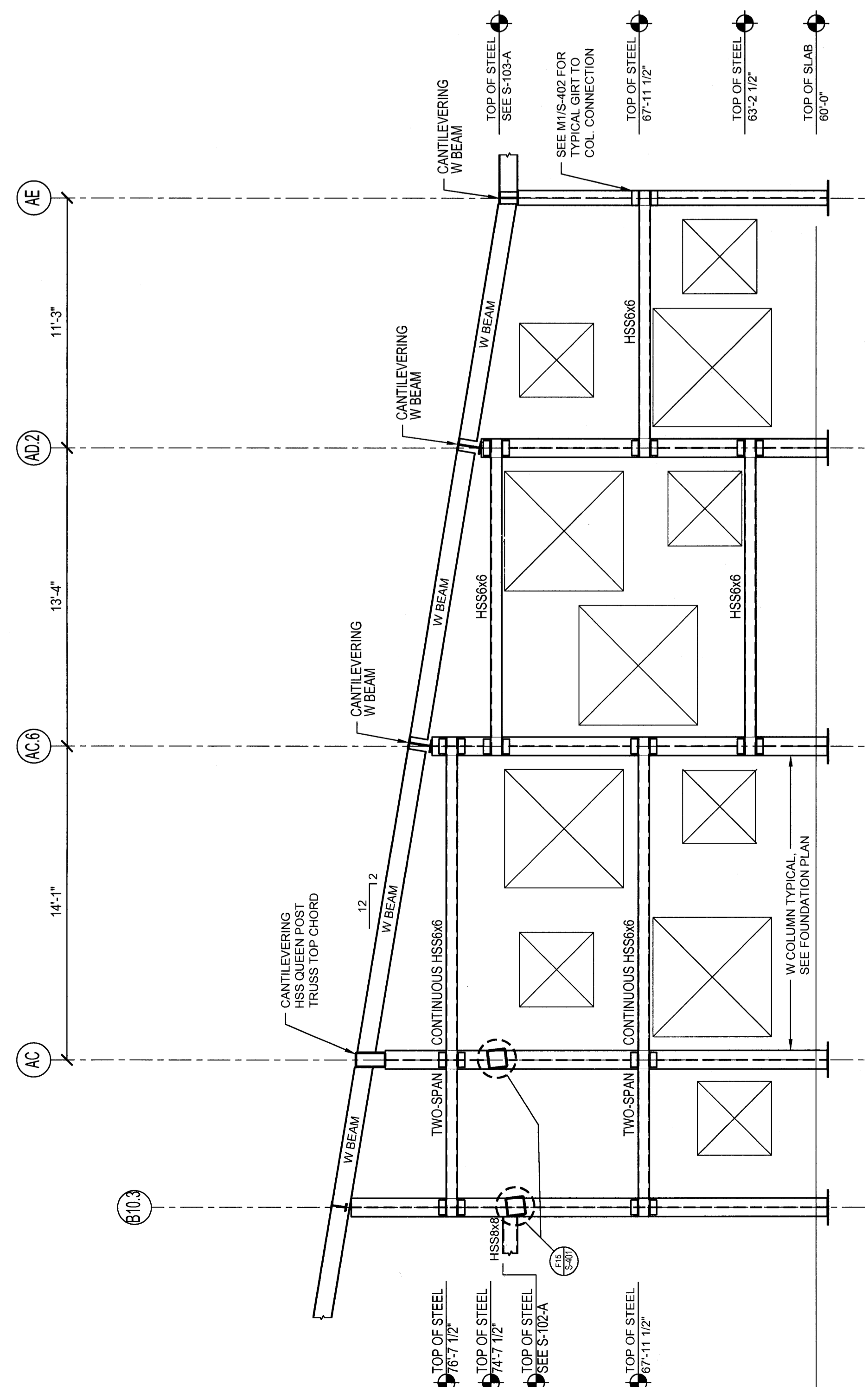
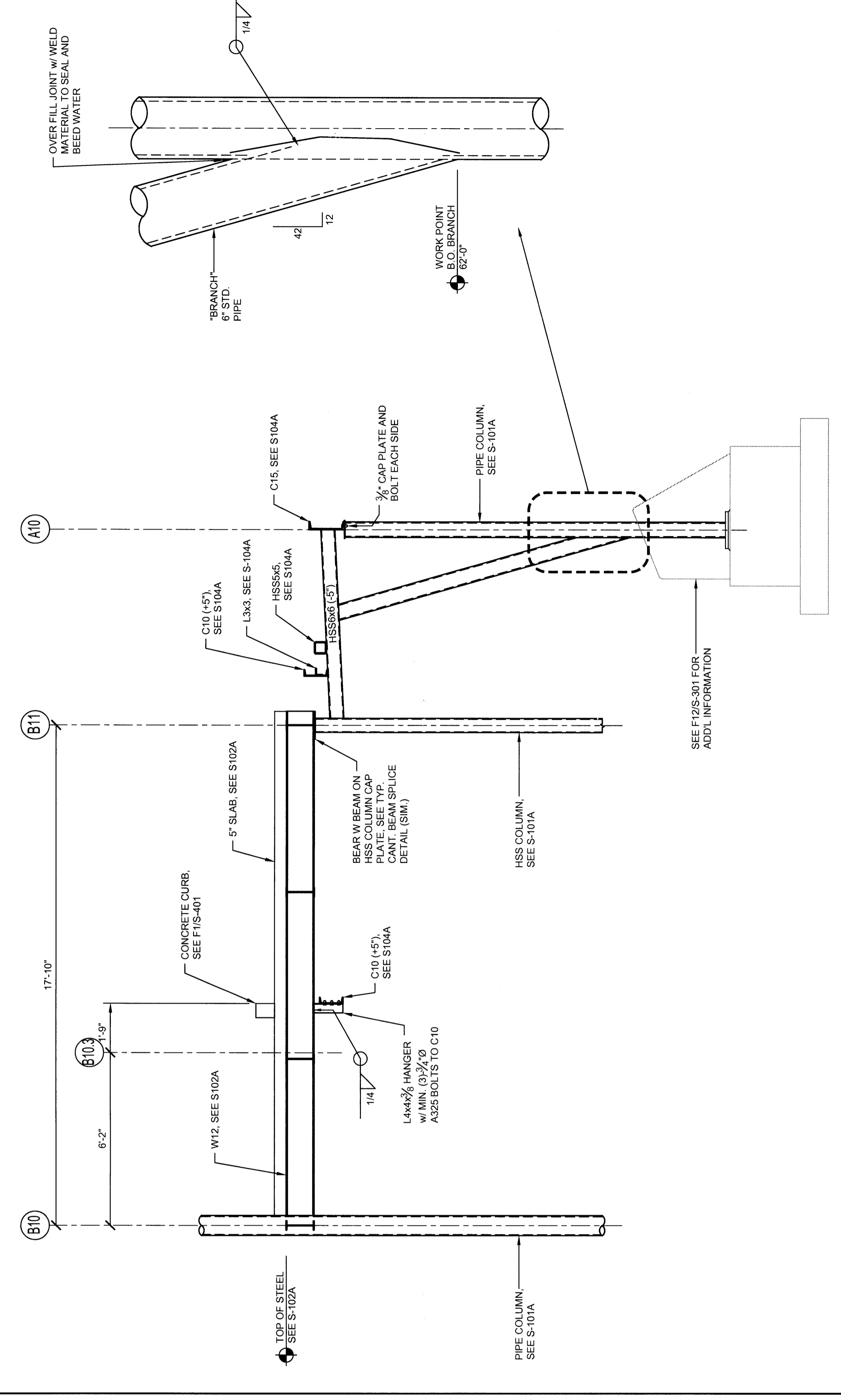


SEGMENT A: BRACING ELEVATIONS

J1
1/8" = 1'-0"



A1
1/4" = 1'-0"



A10
3/8" = 1'-0"

FRAMING ELEVATION ON BH LINE

REV.	DESCRIPTION	DATE
0	DO/DO/DO	

PERMIT APPLICATION
SUBMISSION 3-18-09

CURRENT ISSUE STATUS:

STATE OF MAINE
JOHN P. POLLIN
No. 11216
REGISTERED PROFESSIONAL ENGINEER

WBRC
ARCHITECTS & ENGINEERS
100 WATER STREET
PORTLAND, MAINE 04101-3000
TEL: 603.778.8800 FAX: 603.778.8801

PROJECT:
OCEAN AVENUE ELEMENTARY SCHOOL
PORTLAND, ME

BRACING AND EXTERIOR CFM WALL FRAMING ELEVATION
SEGMENT A

SHEET TITLE: 331810-S-201
PROJECT NO.: 331810
DRAWING SCALE: 0'
SCALE: AS NOTED
PROJECT MANAGER: M.E.J.
DRAWN BY: B.A.B.
CHECKED BY: J.P.P.

SHEET NO.: S-201