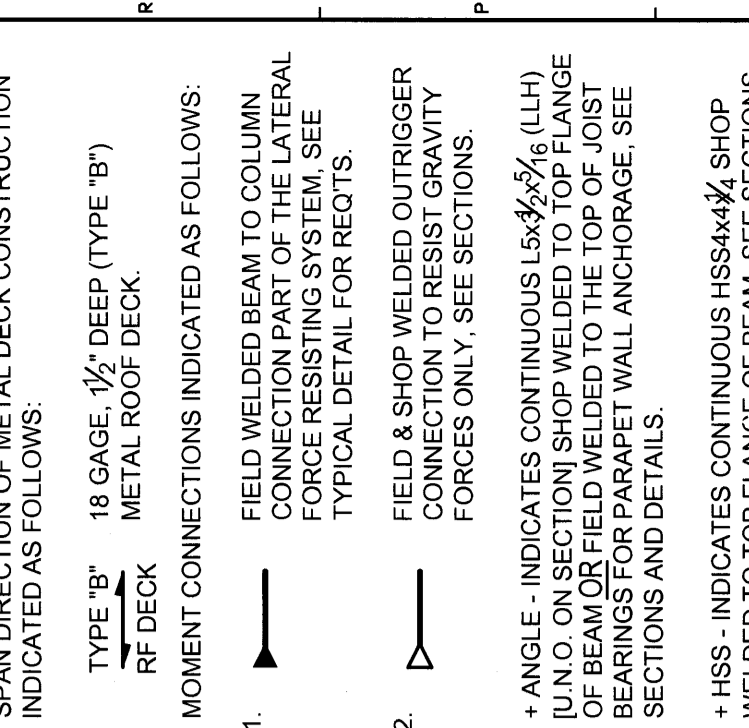


MAIN ROOF FRAMING PLAN NOTES:

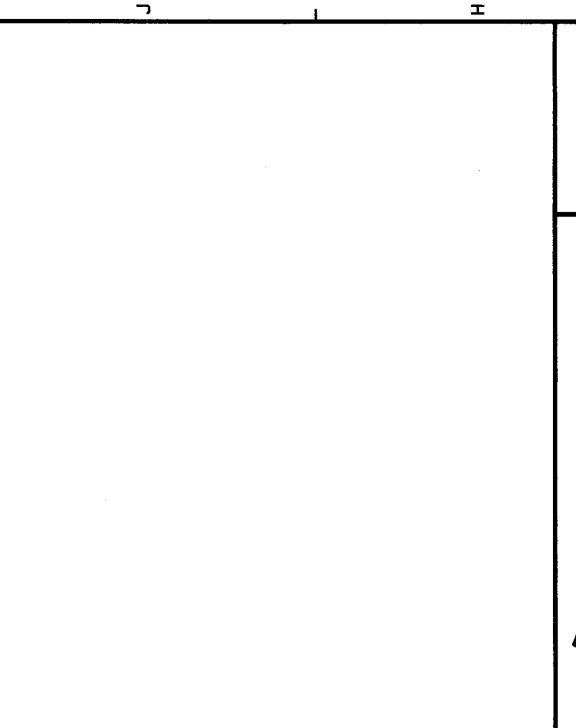
- TOP OF STEEL - UNDERSIDE OF METAL DECK - TOP OF BAR JOIST. BEAMS SUPPORTING BAR JOISTS ARE DERESSED FROM THE TOP OF STEEL EQUAL TO THE DEPTH OF THE JOIST'S BEARING SEAT.
- TOP OF STEEL SLOPES BETWEEN COLUMNS FOR SPANNING ARE INDICATED BY THE TYPICAL TOP OF STEEL AT COLUMN (S-892' UNDO BY 1'-1").
- SPAN DIRECTION OF METAL DECK CONSTRUCTION INDICATED AS FOLLOWS:
- TYPE "A" 18 GAGE, 1/2" DEEP (TYPE "B") METAL ROOF DECK
- MOMENT CONNECTIONS INDICATED AS FOLLOWS:
 - FIELD WELDED BEAM TO COLUMN CONNECTION PART OF THE LATERAL FORCE RESISTING SYSTEM. SEE TYPICAL DETAIL FOR DETAILS.
 - FIELD & SHOP WELDED OUTRIGGER CONNECTIONS. SEE TYPICAL DETAIL FOR DETAILS.
- ANGLE - INDICATES CONTINUOUS L/W (LLH) OF BEAM TO COLUMN CONNECTION. BEARING OF BEAM TO COLUMN CONNECTION IS TO BE WELDED TO THE TOP OF JOIST. SEE TYPICAL DETAIL FOR DETAILS.
- HSS - INDICATES CONTINUOUS HSS/W/4" SHOP WELDED TO TOP FLANGE OF BEAM. SEE SECTIONS AND DETAILS.
- ALL ROOF DECK OPENINGS MAY NOT BE SHOWN. REVISIONS AND NOTES WILL BE MADE IN THE FIELD PER TYPICAL DETAILS. GC SHALL COORDINATE ALL PENETRATIONS WITH STRUCTURAL STEEL AND METAL DECK. SEE TYPICAL DETAILS. CONTRACTOR SHALL REFER TO ARCH. AND MEP DRAWINGS FOR SCOPE (INCL. SIZES, LOCATIONS, QUANTITIES) AND INCLUDE THIS WORK IN THEIR BID.



REV.	DESCRIPTION	DATE
0		00.00.00

PERMIT APPLICATION SUBMISSION 3-18-09

CURRENT ISSUE STATUS:



WBRC ARCHITECTS & ENGINEERS

1000 WASHINGTON ST. SUITE 200
PORTLAND, ME 04101-3000
TEL: 603.761.1111 FAX: 603.761.1112

OCEAN AVENUE ELEMENTARY SCHOOL
PORTLAND, ME

PROJECT: MAIN ROOF FRAMING PLAN - SEGMENT B

SHEET TITLE:	331510-S-103-B
PROJECT No.:	331510
SCALE:	AS NOTED
PROJECT MANAGER:	MEJ
DRAWN BY:	AJB
CHECKED BY:	JPP
DATE:	03/18/09

SEGMENT B: MAIN ROOF FRAMING PLAN

1/8" = 1'-0"

