

SHEET TITLE:	331610-5-102-B
PROJECT NO.:	331610
SCALE:	AS NOTED
PROJECT MANAGER:	MEJ
DRAWN BY:	AJB
CHECKED BY:	JPP
DATE:	00.00.00
REV. DESCRIPTION:	
DATE:	

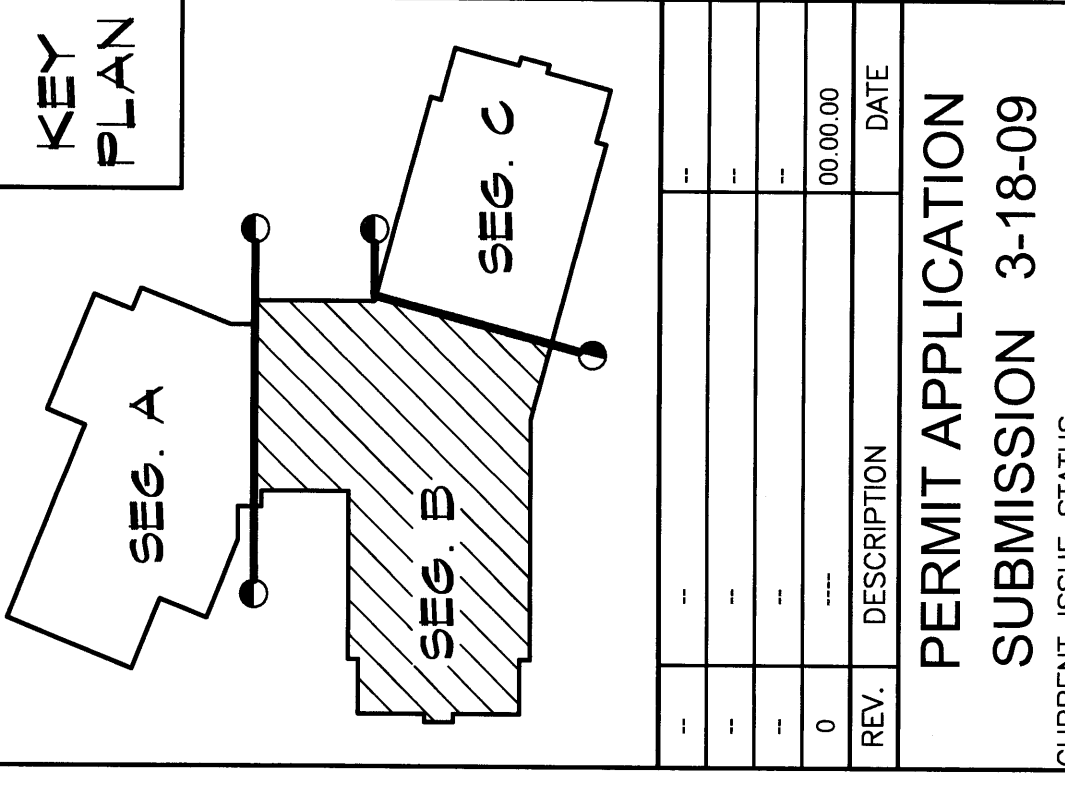
**WBRC**  
ARCHITECTS - ENGINEERS  
WALTER W. BROWN, III, P.E.  
ARCHITECT  
JAMES R. POLLIN, P.E.  
ENGINEER  
1000 W. MAIN ST., SUITE 200  
PORTLAND, ME 04101  
PHONE: 603.761.1111  
FAX: 603.761.1112  
WWW.WBRC-ARCHITECTS.COM

OCEAN AVENUE ELEMENTARY SCHOOL  
PORTLAND, ME

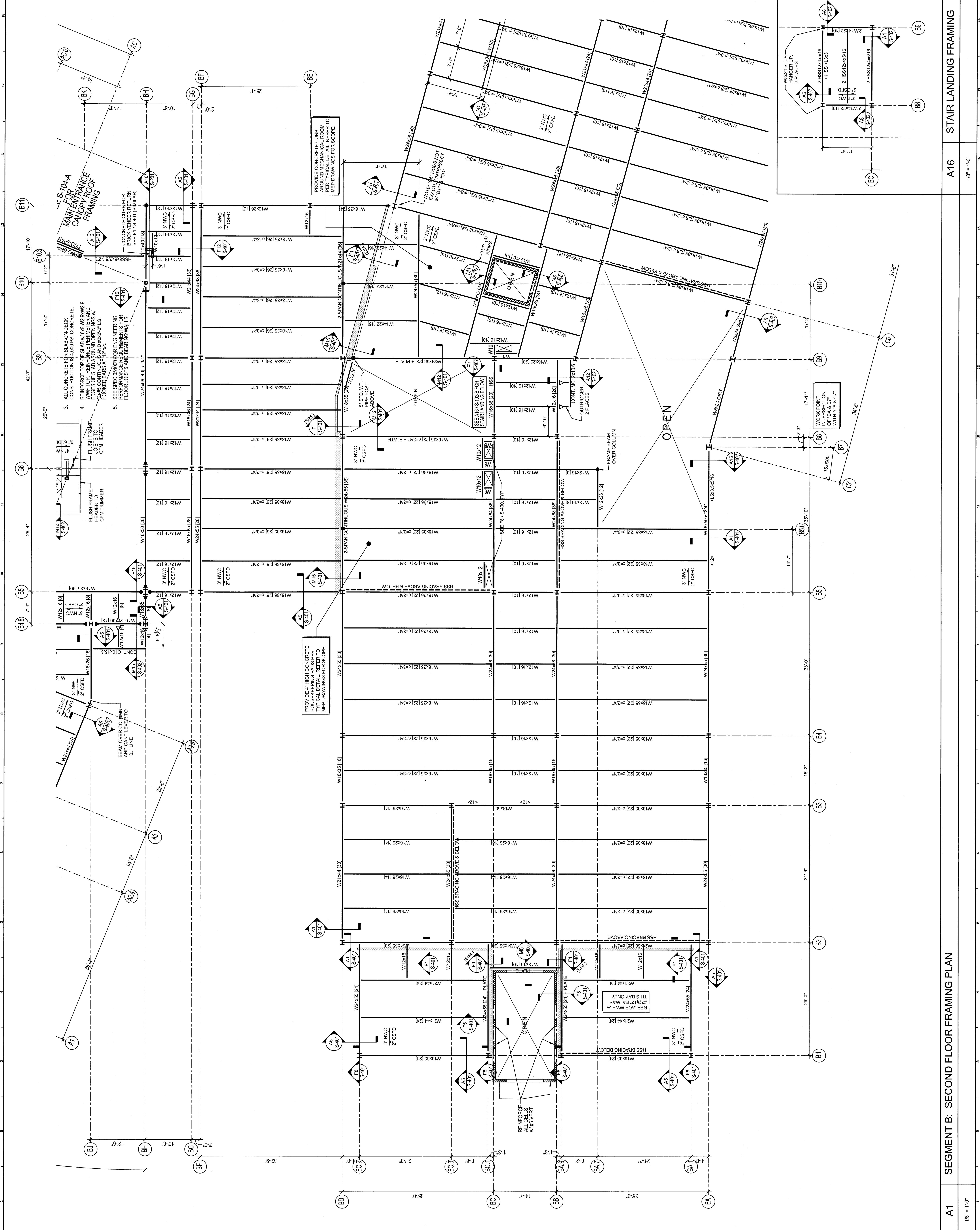
SECOND FLOOR FRAMING PLAN  
- SEGMENT B

PERMIT APPLICATION  
SUBMISSION 3-18-09  
CURRENT ISSUE STATUS: 03/18/09

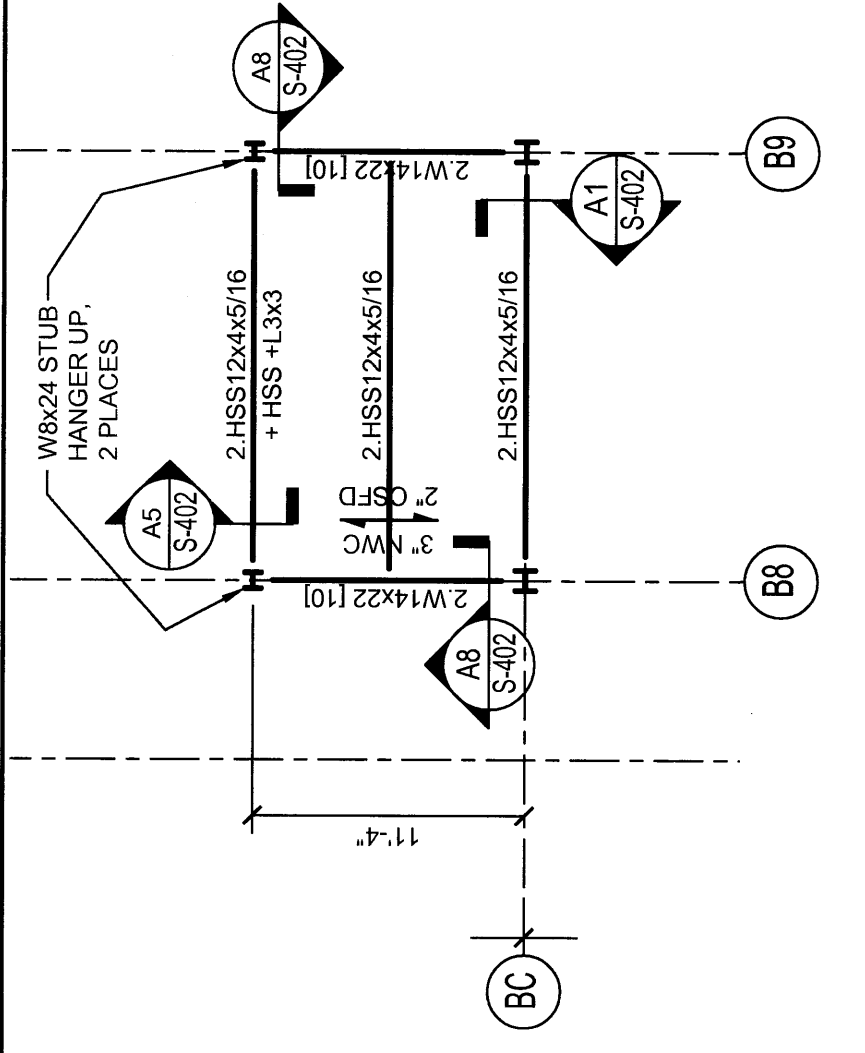
PROJECT NORTH



- SECOND FLOOR LOW ROOF MECH MEZZ FLOOR FRAMING PLAN NOTES:**
- TOP OF STEEL IS AT ELEVATION FROM 74'-3" U.N.O. BY (1'-4") AND AS SCHEDULED BELOW.
    - 1W 74'-2"
    - 2W 71'-7"
  - SPAN DIRECTION OF METAL DECK CONSTRUCTION INDICATED AS SHOWN.
  - "T" NWC INDICATES THICKNESS OF NORMAL WEIGHT CONCRETE (NWC).  
"D" CSFD INDICATES DEPTH OF 18 GAGE CONCRETE (CSFD). T+D = TOTAL SLAB THICK.
  - TYPE "B" 18 GAGE 1/2" DEEP (TYPE "B") METAL ROOF DECK.  
TYPE "A" 18/20 GAGE 1/2" DEEP (TYPE "A") METAL ROOF DECK.  
TYPE "C" 18/20 GAGE 1/2" DEEP (TYPE "C") METAL ROOF DECK.  
TYPE "D" 18/20 GAGE 1/2" DEEP (TYPE "D") METAL ROOF DECK.
  - ALL CONCRETE FOR SLAB-ON-DECK CONSTRUCTION IS 4,000 PSI CONCRETE.
  - REINFORCE TOP OF SLAB WITH #4 @ 18" ON CENTER. REINFORCE PERIMETER AND EDGES OF SLAB WITH #4 @ 12" ON CENTER. PROVIDE #4 @ 12" ON CENTER AT 12" ON CENTER.
  - MOMENT CONNECTIONS INDICATED AS FOLLOWS:
    - 5.1. FIELD WELDED BEAM TO COLUMN CONNECTION PART OF THE LATERAL FORCE RESISTING SYSTEM. SEE TYPICAL DETAIL FOR DETAILS.
    - 5.2. FIELD & SHOP WELDED OUTRIGGER CONNECTION. SEE TYPICAL DETAIL FOR DETAILS.
    - 5.3. WELDED ANCHOR BOLTS CONNECTION. SEE TYPICAL DETAIL ON S-200.
  - PROVIDE 3/4" DIAMETER 3/8" LONG HEADED SHEAR STUDS FIELD WELDED TO THE TOP OF STEEL FRAMING IN QUANTITIES NOTED ON PLAN AS FOLLOWS:
    - 6.1. (#) NUMBER OF STUDS TO BE UNIFORMLY SPACED ALONG ENTIRE LENGTH OF BEAM.
    - 6.2. (#) NUMBER OF STUDS TO BE UNIFORMLY SPACED ALONG ENTIRE LENGTH OF COLUMN AND/OR POSTS.
  - ALL SLAB AND ROOF DECK OPENINGS MAY NOT BE SHOWN. REINFORCEMENT IS REQUIRED AT ALL OPENINGS. ALL REINFORCEMENT IS TO BE FITTED IN THE FIELD PER TYPICAL DETAILS. COORDINATE ALL PENETRATIONS WITH STRUCTURAL STEEL AND METAL DECK SHOP DRAWINGS FOR ALL OPENINGS. ALL OPENINGS SHALL BE 12" ON CENTER. ALL OPENINGS SHALL BE 12" ON CENTER. ALL OPENINGS SHALL BE 12" ON CENTER.
  - INDICATES REINFORCEMENT CAST-IN-PLACE CONCRETE. SEE TYPICAL DETAIL FOR DETAILS.



A16 STAIR LANDING FRAMING  
1/8" = 1'-0"



A1 SEGMENT B: SECOND FLOOR FRAMING PLAN  
1/8" = 1'-0"