

**FIRE PROTECTION SYSTEM NOTES:**

- REFER TO DIVISION 21 SPECIFICATIONS.
- FACILITY SHALL BE PROVIDED WITH A FIRE SUPPRESSION SYSTEM IN ACCORDANCE WITH NFPA 13 & THE STATE OF MAINE FIRE MARSHAL'S OFFICE. A WET SYSTEM SHALL BE PROVIDED FOR ALL CLASSROOMS, OFFICES, & SPACES. A GAS-COOL SYSTEM SHALL BE PROVIDED FOR PROTECTION OF ALL NON-HEATED AREAS & SPACES. (CANNERS, ETC.)
- COORDINATE SPRINKLER PIPING LOCATIONS WITH ALL TRADES.
- DO NOT INSTALL SPRINKLER PIPING OVER ELECTRICAL TRAYS OR CONDUITS. PROVIDE ACCESS TO ALL ELECTRICAL SWITCH GEAR, W/ ACCESS & SERVICE OF ELECTRICAL SWITCH GEAR, W/ ELECTRICAL CONTRACTOR.
- PROVIDE SPRINKLER COVERAGE OVER ALL CABLE TRAYS. COORDINATE WITH ELECTRICAL ALL CABLE TRAY LOCATIONS.
- FACILITY SHALL BE PROVIDED WITH A STANDPIPE SYSTEM IN ACCORDANCE WITH NFPA 14 AND THE CITY OF PORTLAND FIRE DEPT.

**FIRE SUPPRESSION SYSTEM LEGEND**

- FDC: FIRE DEPT. CONNECTION (STORZ)
- SPRINKLER SYSTEM WET RISER
- SPRINKLER SYSTEM DRY RISER
- FIRE SUPPRESSION WATER SERVICE
- AREA DESIGNATED FOR FIRE PROTECTION ENTRANCE AND COMPONENTS - NO PIPING PERMITTED.

**PORTLAND WATER DISTRICT**  
Portland, ME 04104

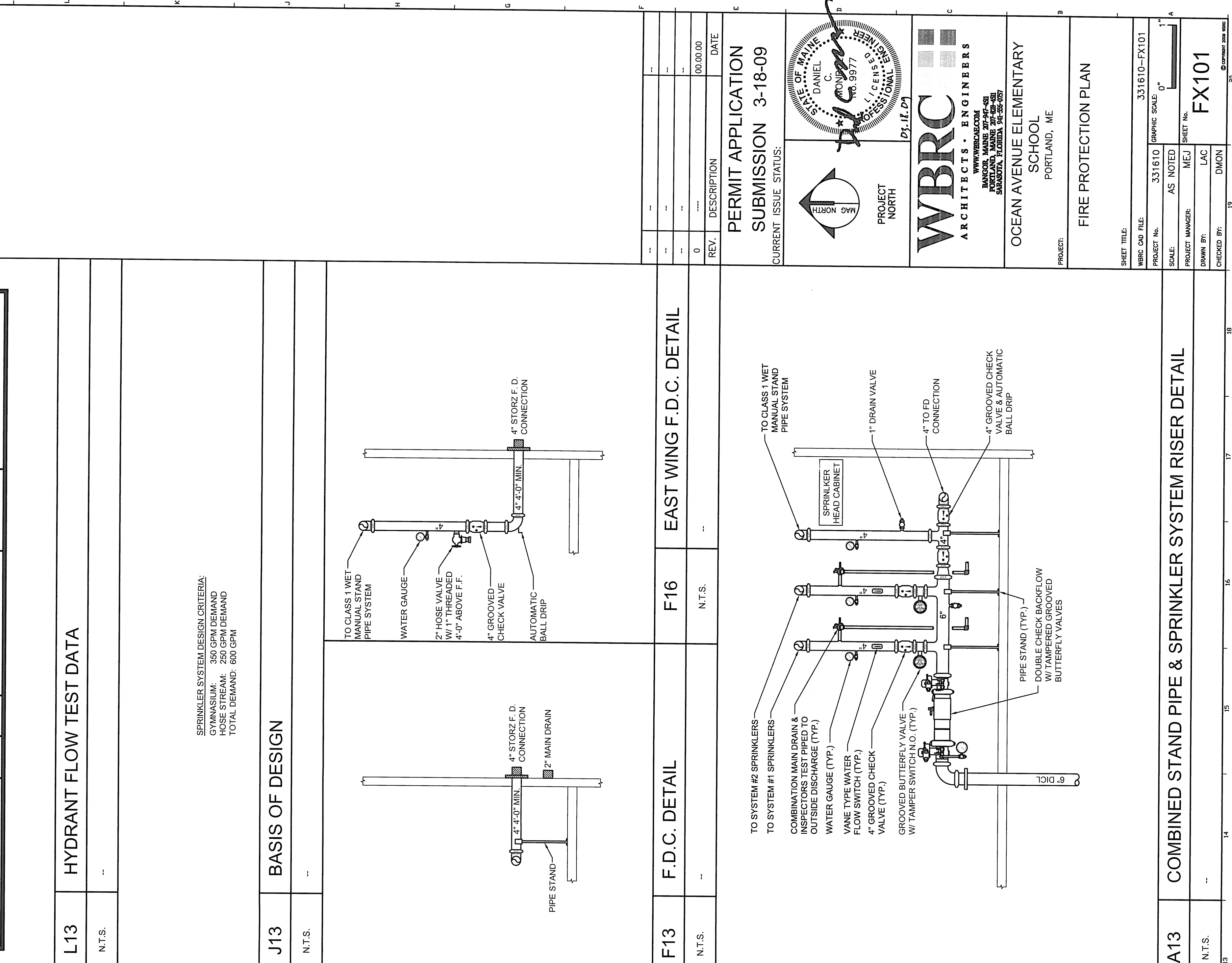
**150 Ocean Avenue**  
Portland

**Flow Hydrant**  
POD-HYP08092  
150 Ocean Ave 150' in from Walton St  
Date: 9-29-2008 @ 1100  
Static: 91 psi (Right Port)  
14 psi (Left Port)  
Flow: 1276 gpm

**SPRINKLER SYSTEM DESIGN CRITERIA:**  
GYMNASIUM: 350 GPM DEMAND  
TOTAL DEMAND: 800 GPM

**HYDRANT FLOW TEST DATA**

**BASIS OF DESIGN**



**FIRE PROTECTION SYSTEM NOTES:**

- REFER TO DIVISION 21 SPECIFICATIONS.
- FACILITY SHALL BE PROVIDED WITH A FIRE SUPPRESSION SYSTEM IN ACCORDANCE WITH NFPA 13 & THE STATE OF MAINE FIRE MARSHAL'S OFFICE. A WET SYSTEM SHALL BE PROVIDED FOR ALL CLASSROOMS, OFFICES, & SPACES. A GAS-COOL SYSTEM SHALL BE PROVIDED FOR PROTECTION OF ALL NON-HEATED AREAS & SPACES. (CANNERS, ETC.)
- COORDINATE SPRINKLER PIPING LOCATIONS WITH ALL TRADES.
- DO NOT INSTALL SPRINKLER PIPING OVER ELECTRICAL TRAYS OR CONDUITS. PROVIDE ACCESS TO ALL ELECTRICAL SWITCH GEAR, W/ ACCESS & SERVICE OF ELECTRICAL SWITCH GEAR, W/ ELECTRICAL CONTRACTOR.
- PROVIDE SPRINKLER COVERAGE OVER ALL CABLE TRAYS. COORDINATE WITH ELECTRICAL ALL CABLE TRAY LOCATIONS.
- FACILITY SHALL BE PROVIDED WITH A STANDPIPE SYSTEM IN ACCORDANCE WITH NFPA 14 AND THE CITY OF PORTLAND FIRE DEPT.

**FIRE SUPPRESSION SYSTEM LEGEND**

- FDC: FIRE DEPT. CONNECTION (STORZ)
- SPRINKLER SYSTEM WET RISER
- SPRINKLER SYSTEM DRY RISER
- FIRE SUPPRESSION WATER SERVICE
- AREA DESIGNATED FOR FIRE PROTECTION ENTRANCE AND COMPONENTS - NO PIPING PERMITTED.

**PORTLAND WATER DISTRICT**  
Portland, ME 04104

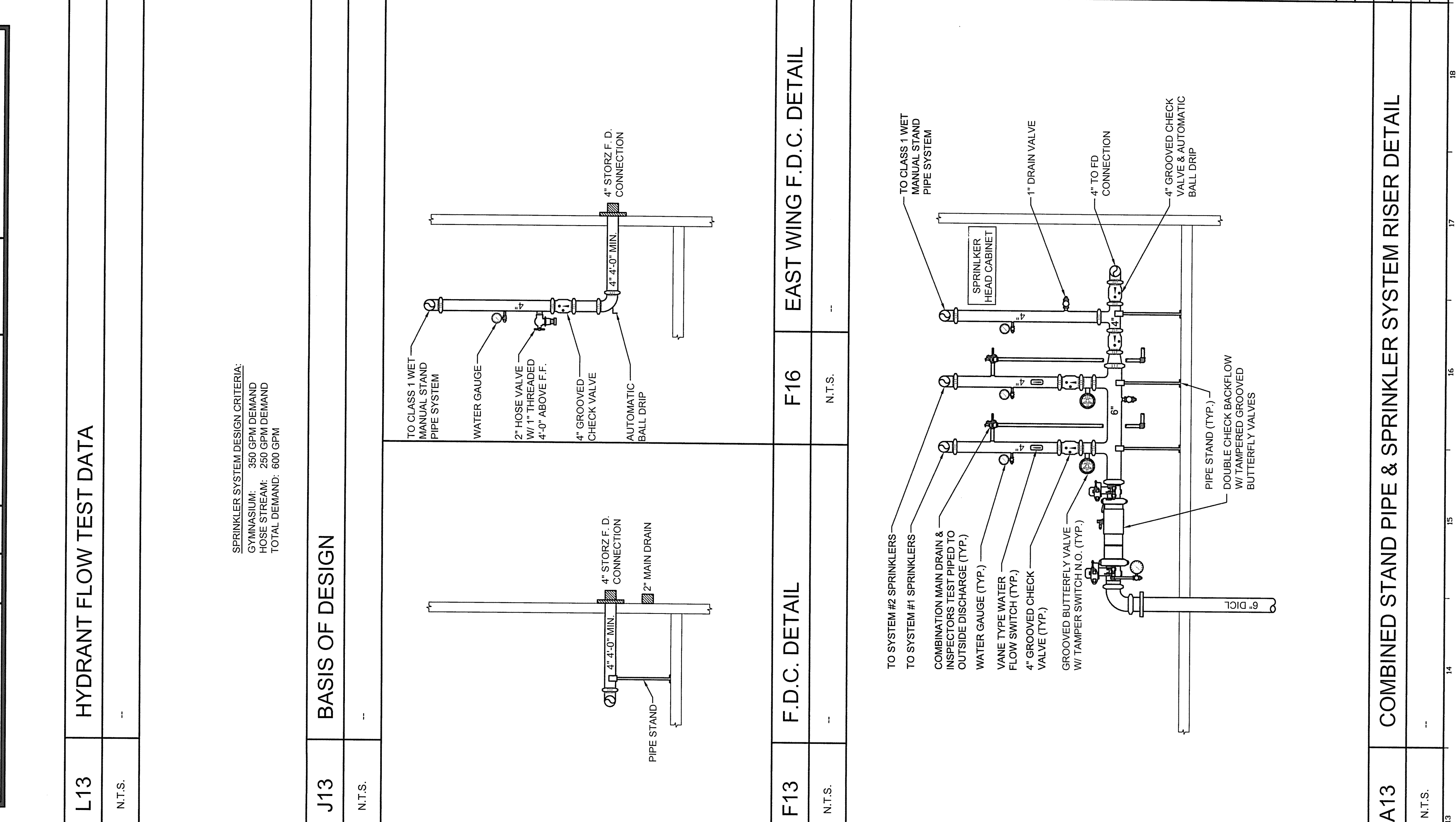
**150 Ocean Avenue**  
Portland

**Flow Hydrant**  
POD-HYP08092  
150 Ocean Ave 150' in from Walton St  
Date: 9-29-2008 @ 1100  
Static: 91 psi (Right Port)  
14 psi (Left Port)  
Flow: 1276 gpm

**SPRINKLER SYSTEM DESIGN CRITERIA:**  
GYMNASIUM: 350 GPM DEMAND  
TOTAL DEMAND: 800 GPM

**HYDRANT FLOW TEST DATA**

**BASIS OF DESIGN**



**FIRE PROTECTION SYSTEM NOTES:**

- REFER TO DIVISION 21 SPECIFICATIONS.
- FACILITY SHALL BE PROVIDED WITH A FIRE SUPPRESSION SYSTEM IN ACCORDANCE WITH NFPA 13 & THE STATE OF MAINE FIRE MARSHAL'S OFFICE. A WET SYSTEM SHALL BE PROVIDED FOR ALL CLASSROOMS, OFFICES, & SPACES. A GAS-COOL SYSTEM SHALL BE PROVIDED FOR PROTECTION OF ALL NON-HEATED AREAS & SPACES. (CANNERS, ETC.)
- COORDINATE SPRINKLER PIPING LOCATIONS WITH ALL TRADES.
- DO NOT INSTALL SPRINKLER PIPING OVER ELECTRICAL TRAYS OR CONDUITS. PROVIDE ACCESS TO ALL ELECTRICAL SWITCH GEAR, W/ ACCESS & SERVICE OF ELECTRICAL SWITCH GEAR, W/ ELECTRICAL CONTRACTOR.
- PROVIDE SPRINKLER COVERAGE OVER ALL CABLE TRAYS. COORDINATE WITH ELECTRICAL ALL CABLE TRAY LOCATIONS.
- FACILITY SHALL BE PROVIDED WITH A STANDPIPE SYSTEM IN ACCORDANCE WITH NFPA 14 AND THE CITY OF PORTLAND FIRE DEPT.

**FIRE SUPPRESSION SYSTEM LEGEND**

- FDC: FIRE DEPT. CONNECTION (STORZ)
- SPRINKLER SYSTEM WET RISER
- SPRINKLER SYSTEM DRY RISER
- FIRE SUPPRESSION WATER SERVICE
- AREA DESIGNATED FOR FIRE PROTECTION ENTRANCE AND COMPONENTS - NO PIPING PERMITTED.

