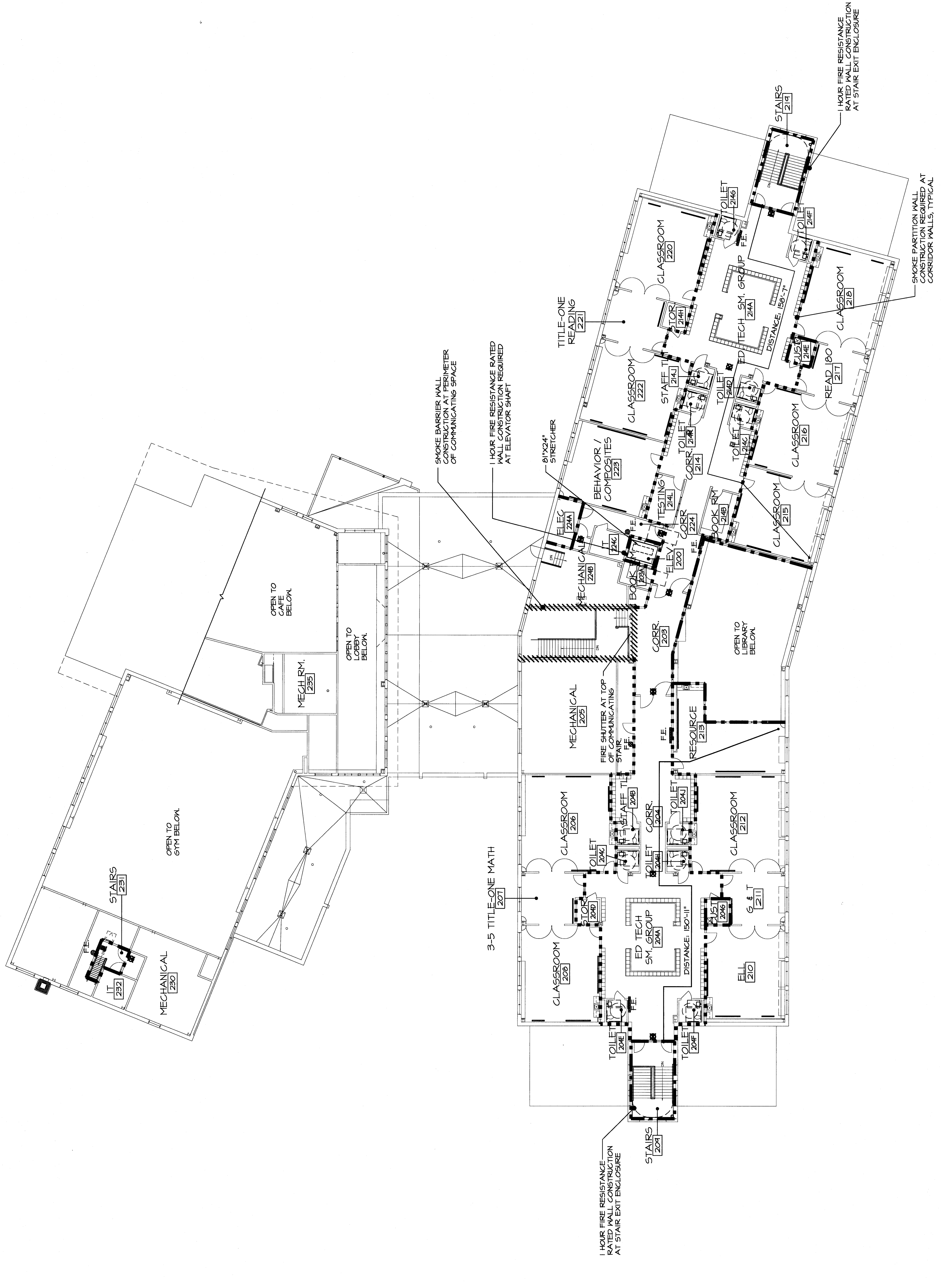
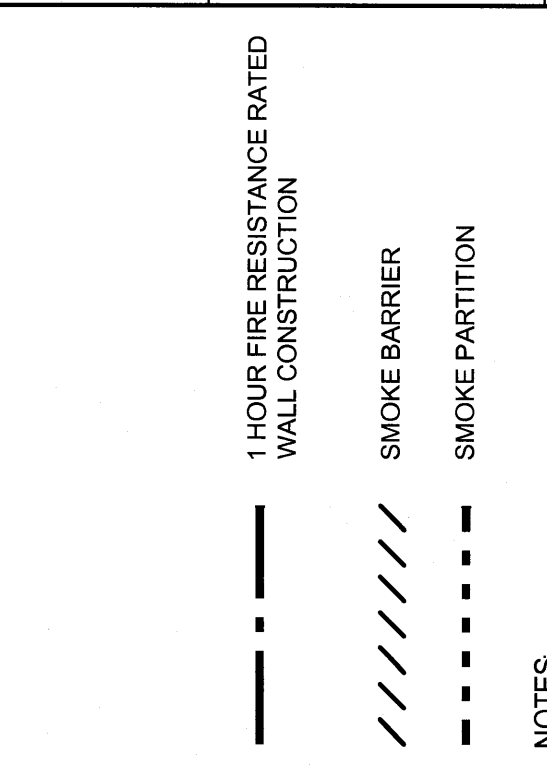


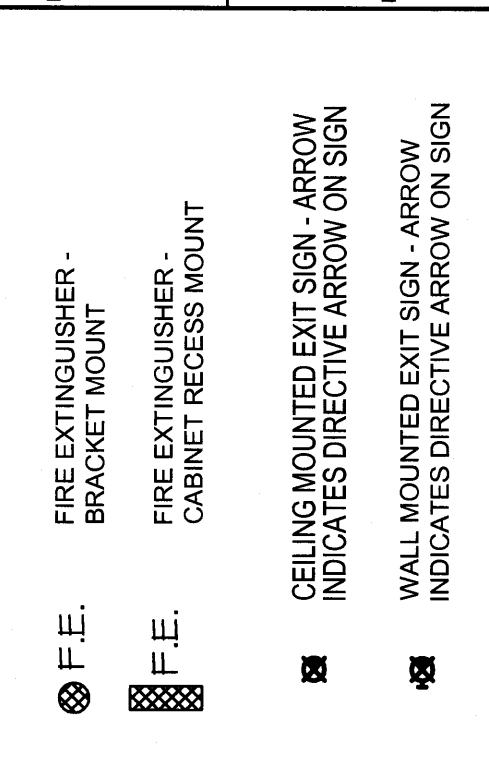
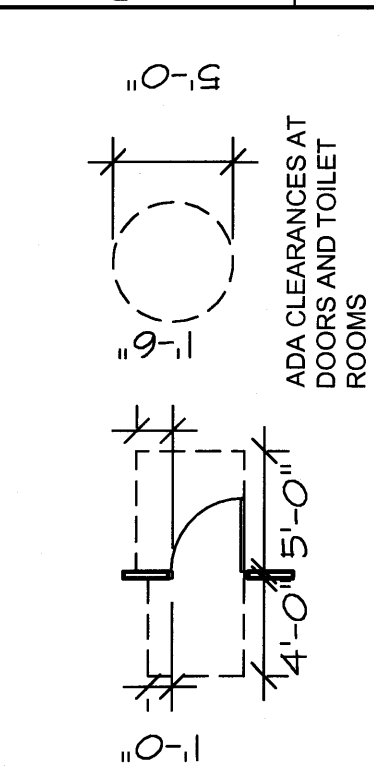
SPACE INVENTORY SCHEDULE		
Rm No.	ROOM NAME	OCCUPANCY / OCCUPANCY AREA
200	ELEV.	0 / 46 SF
203	CORR.	0 / 4710 SF
203A	BOOK RM	0 / 71 SF
204	CORR.	0 / 1910 SF
204A	ED TECH SM. GROUP	0 / 314 SF
204B	STAFF TLT	0 / 49 SF
204C	TOILET	0 / 49 SF
204D	STOR.	0 / 60 SF
204E	TOILET	0 / 49 SF
204F	TOILET	0 / 49 SF
204G	CUST.	0 / 60 SF
204H	TOILET	0 / 49 SF
204I	TOILET	0 / 49 SF
205	MECHANICAL	0 / 1341 SF
206	CLASSROOM	44 / 694 SF
207	3-5 TITLE-ONE MATH	15 / 308 SF
208	CLASSROOM	39 / 761 SF
209	STAIRS	0 / 332 SF
210	ELL	0 / 192 SF
211	6 & 7	15 / 308 SF
212	CLASSROOM	44 / 694 SF
213	RESOURCE	33 / 660 SF
214	CORR.	0 / 2149 SF
214A	ED. TECH SM. GROUP	0 / 314 SF
214B	BOOK RM	0 / 121 SF
214C	TOILET	0 / 49 SF
214D	CUST.	0 / 59 SF
214E	TOILET	0 / 49 SF
214G	STOR.	0 / 60 SF
214H	STAFF TLT	0 / 49 SF
214J	TOILET	0 / 49 SF
214K	TOILET	0 / 49 SF
214L	TESTING	6 / 121 SF
215	CLASSROOM	34 / 684 SF
216	CLASSROOM	39 / 762 SF
217	READ 180	15 / 308 SF
218	CLASSROOM	39 / 761 SF
219	STAIRS	0 / 332 SF
220	CL. RM	0 / 308 SF
221	TITLE-ONE READING	15 / 308 SF
222	CLASSROOM	39 / 762 SF
223	BEHAVIOR / COMPOSITES	34 / 100 SF
224	CORR.	0 / 190 SF
224A	ELEC	0 / 121 SF
224B	MECHANICAL	0 / 357 SF
224C	IT	0 / 46 SF
224D	MECHANICAL	0 / 1447 SF
225	STAIRS	0 / 40 SF
225A	IT	0 / 110 SF
225B	MECH RM.	0 / 422 SF
225C		0 / 22493 SF



FIRE SUPPRESSION SYSTEM NOTES:
 1. FACILITY SHALL BE PROVIDED WITH A FIRE SUPPRESSION SYSTEM IN ACCORDANCE WITH NFPA 13 & THE STATE OF MAINE FIRE MARSHAL'S OFFICE.
 2. FACILITY SHALL BE PROVIDED WITH A STANDPIPE PORTLAND FIRE DEPT.
 3. REFER TO SHEET FX101 FOR SPRINKLER SYSTEM INFORMATION.



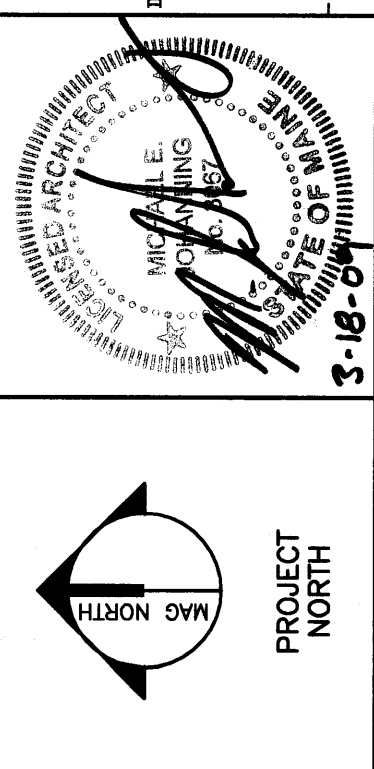
NOTES:
 1. REFER TO ARCHITECTURAL PLANS FOR ADDITIONAL INFORMATION ON LOCATIONS OF FIRE WALLS AND SMOKE PARTITIONS.
 2. PROVIDE FIRE STOPPING AT PENETRATIONS IN RATED WALLS WITHIN RATED WALL ASSEMBLIES. REFER TO SPEC. SECTION 078413



APPLICABLE CODES:
 IRC 2003 & NFPA 101 (2009)
 OCCUPANCY - MIXED OCCUPANCIES
 CONSTRUCTION TYPE - TYPE II (IBC)
 TYPE II (IBC)
 MAXIMUM TRAVEL DISTANCE EDUCATION = 200'-0"
 MAXIMUM TRAVEL DISTANCE ASSEMBLY = 250'-0"
 DEAD END CORRIDOR MAX
 FIRST FLOOR AREA 41,254 SQ. FT.
 SECOND FLOOR AREA 20,738 SQ. FT.
 MAX. DIST. BETWEEN FIRE EXTINGUISHERS = 99'-0"



REV.	DESCRIPTION	DATE
0		02/20/20



WBRC
 ARCHITECTS • ENGINEERS
 100 WATER STREET
 PORTLAND, MAINE 04101-3535
 3-19-07

OCEAN AVENUE ELEMENTARY SCHOOL
 PORTLAND, ME

SECOND FLOOR CODE COMPLIANCE AND FIRE PROTECTION PLAN

PROJECT NO.	331610
AS NOTED	MEJ
SHEET NO.	G1004
DRAWN BY	MEJ
CHECKED BY	MEJ

AI SECOND FLOOR CODE COMPLIANCE AND FIRE PROTECTION PLAN