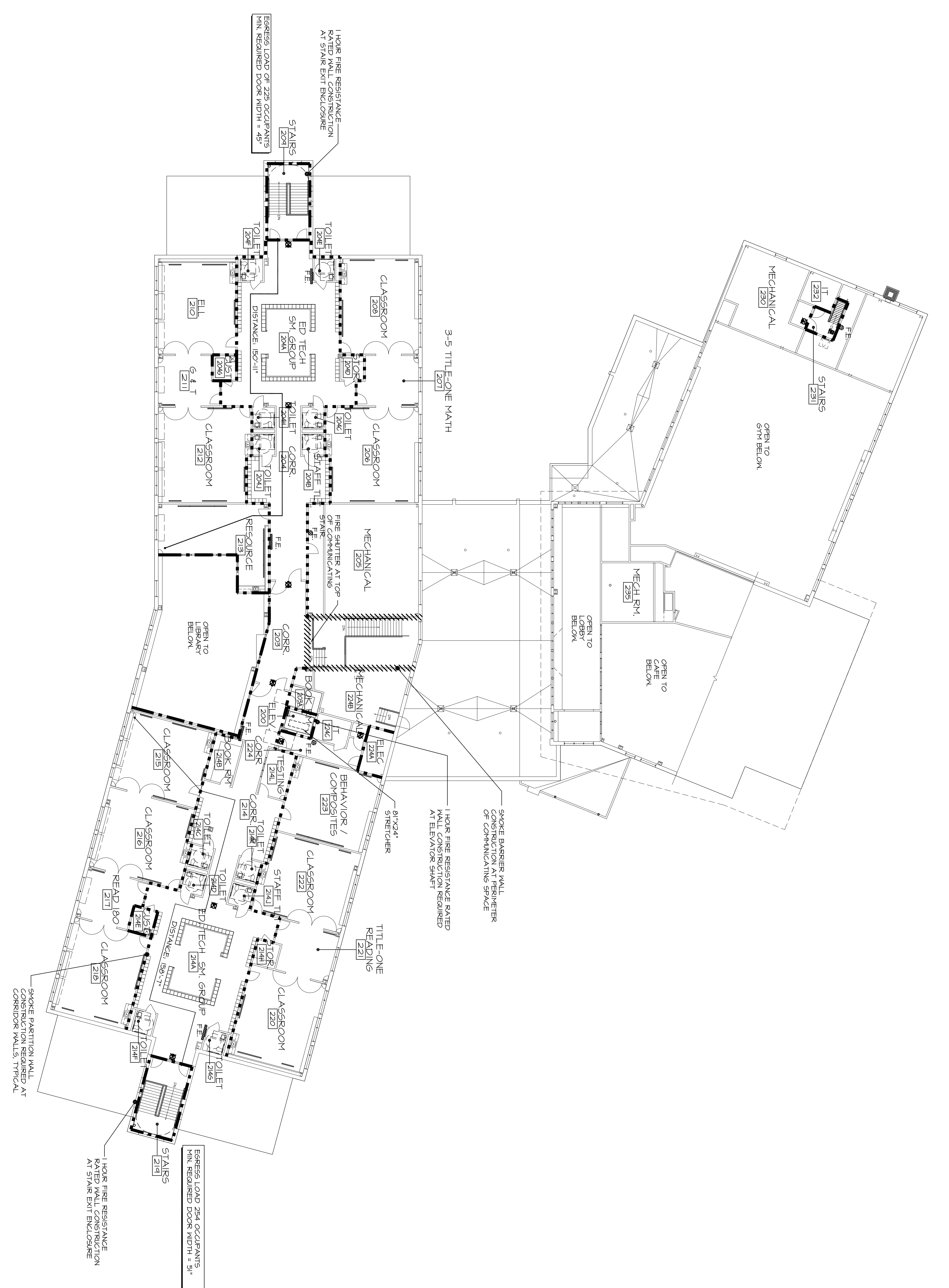


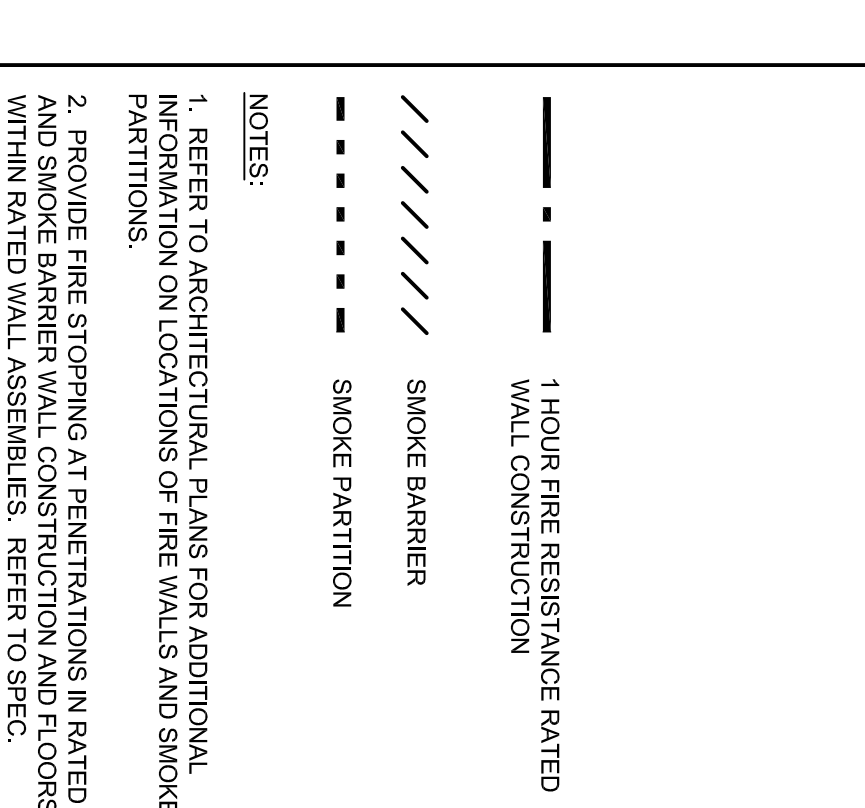
**SPACE INVENTORY SCHEDULE**

Rm No.	ROOM NAME	OCCUPANCY	OCCUPANCY AREA
200	ELEV		478 SF
203	CORR		17 SF
203A	BOOK RM		140 SF
204	CORR		314 SF
204A	ED TECH SM GROUP		48 SF
204B	STAFF TLT		48 SF
204C	STOR		60 SF
204D	TOILET		48 SF
204E	TOILET		48 SF
204F	TOILET		60 SF
204G	TOILET		48 SF
204H	TOILET		48 SF
205	MECHANICAL		154 SF
205A	MECHANICAL		84 SF
205B	MECHANICAL		309 SF
206	3-5 TITLE-ONE MATH CLASSROOM		161 SF
206A	STAIRS		332 SF
206B	E.L.		132 SF
210	6 & T		308 SF
212	CLASSROOM		644 SF
213	RESOURCE		660 SF
214	CORR		214 SF
214A	ED TECH SM GROUP		314 SF
214B	BOOK RM		137 SF
214C	TOILET		48 SF
214D	TOILET		48 SF
214E	TOILET		48 SF
214F	TOILET		48 SF
214G	STOR		60 SF
214H	STAFF TLT		48 SF
214K	TOILET		48 SF
214L	TESTING		137 SF
215	CLASSROOM		644 SF
216	CLASSROOM		380 SF
217	READ IBO		308 SF
218	CLASSROOM		161 SF
218A	STAIRS		332 SF
220	CLASSROOM		132 SF
221	TITLE-ONE READING		308 SF
222	CLASSROOM		324 SF
222A	BEHAVIOR CORR		102 SF
222B	CLASSROOM		180 SF
222C	CLASSROOM		180 SF
222D	CLASSROOM		180 SF
222E	CLASSROOM		180 SF
222F	CLASSROOM		180 SF
222G	CLASSROOM		180 SF
222H	CLASSROOM		180 SF
222I	CLASSROOM		180 SF
222J	CLASSROOM		180 SF
222K	CLASSROOM		180 SF
222L	CLASSROOM		180 SF
222M	CLASSROOM		180 SF
222N	CLASSROOM		180 SF
222O	CLASSROOM		180 SF
222P	CLASSROOM		180 SF
222Q	CLASSROOM		180 SF
222R	CLASSROOM		180 SF
222S	CLASSROOM		180 SF
222T	CLASSROOM		180 SF
222U	CLASSROOM		180 SF
222V	CLASSROOM		180 SF
222W	CLASSROOM		180 SF
222X	CLASSROOM		180 SF
222Y	CLASSROOM		180 SF
222Z	CLASSROOM		180 SF
223	MECHANICAL		557 SF
224	MECHANICAL		557 SF
224C	MECHANICAL		557 SF
224D	MECHANICAL		557 SF
224E	MECHANICAL		557 SF
224F	MECHANICAL		557 SF
224G	MECHANICAL		557 SF
224H	MECHANICAL		557 SF
224I	MECHANICAL		557 SF
224J	MECHANICAL		557 SF
224K	MECHANICAL		557 SF
224L	MECHANICAL		557 SF
224M	MECHANICAL		557 SF
224N	MECHANICAL		557 SF
224O	MECHANICAL		557 SF
224P	MECHANICAL		557 SF
224Q	MECHANICAL		557 SF
224R	MECHANICAL		557 SF
224S	MECHANICAL		557 SF
224T	MECHANICAL		557 SF
224U	MECHANICAL		557 SF
224V	MECHANICAL		557 SF
224W	MECHANICAL		557 SF
224X	MECHANICAL		557 SF
224Y	MECHANICAL		557 SF
224Z	MECHANICAL		557 SF
230	MECHANICAL		1447 SF
231	STAIRS		40 SF
232	IT		110 SF
235	MECH RM		422 SF
			20863 SF



**FIRE SUPPRESSION SYSTEM NOTES:**

- FACILITY SHALL BE PROVIDED WITH A FIRE SUPPRESSION SYSTEM IN ACCORDANCE WITH NFPA 13 & THE STATE OF OREGON FIRE MARSHAL'S OFFICE.
- FACILITY SHALL BE PROVIDED WITH A STANDARD PORTLAND FIRE DEPT. INFORMATION.
- REFER TO SHEET P101 FOR SPRINKLER SYSTEM INFORMATION.



**NOTES:**

- REFER TO ARCHITECTURAL PLANS FOR ADDITIONAL INFORMATION ON LOCATIONS OF FIRE WALLS AND SMOKE PARTITIONS.
- PROVIDE FIRE STOPPING AT PENETRATIONS IN RATED WALLS WITHIN RATED WALL ASSEMBLIES. REFER TO SPEC SECTION 079413.

**BID DOCUMENTS**  
04-02-09

**CURRENT ISSUE STATUS:**

1 PERMIT APPLICATION REV/ 24-29-2009  
0 BID DOCUMENTS 24-02-2009  
REV DESCRIPTION DATE

**WBRC ARCHITECTS - ENGINEERS**  
WWW.WBRC.COM  
1000 N. WASHINGTON ST. SUITE 200  
PORTLAND, OREGON 97208

**OCEAN AVENUE ELEMENTARY SCHOOL**  
PORTLAND, ME

PROJECT: NORTH

PRODUCT: SK-G1004-1

SHEET TITLE: SK-G1004-1

DATE: 3/16/10

SCALE: AS NOTED

DRAWN BY: TRJ

CHECKED BY: MCL