

LEGEND

DUCT SMOKE	CONTROL RELAY	HEAT DETECTOR	POINT INPUT DEVICE
STROBE ONLY	UTILITY RELAY	REMOTE TEST	WATERFLOW SWITCH
MANUAL PULL	SMOKE DETECTOR	DOOR HOLDER	TAMPER SWITCH
SPEAKER STROBE	WIRE GUARD	CEILING MOUNTED	STOPPER COVER

WIRE SIZING SCHEDULE

A. Addressable loops 2C-16AWG twisted non-shielded from FACP to Devices.
B. Notification loops 2C-14AWG twisted non-shielded from boosters to circuits.
C. Initiating Loops 2C-16AWG non-shielded for entire loop and devices.
D. ALL Audio Wires 2C-16AWG shielded.
E. Interconnection from FACP to Boosters 4C-14AWG non-shielded.

Modification / Revision

Rev #	Date	Description	By
1	09-19-09	INSERTED ENGINEERING CHANGES	LCB
2	09-24-09	INSERTED NOTATIONS	LCB

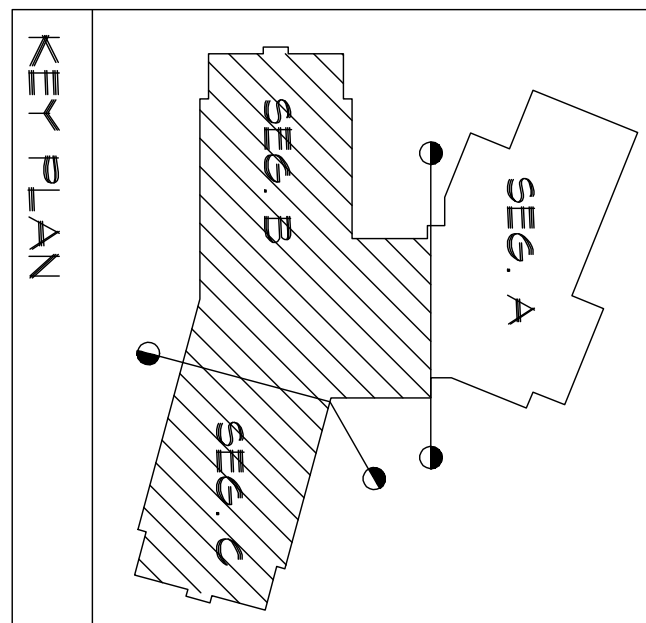
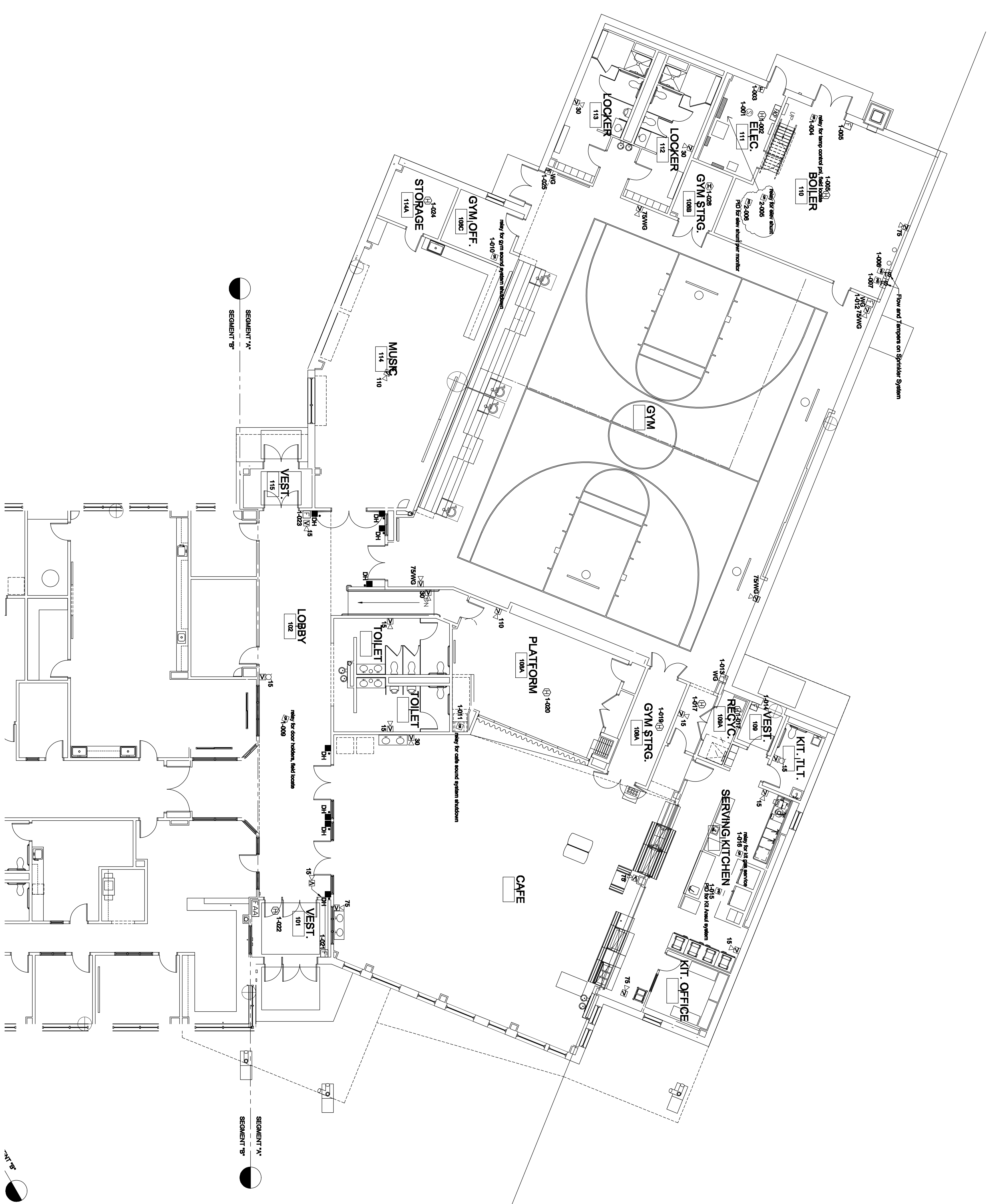
**OCEAN AVENUE SCHOOL
PORTLAND, MAINE**

FIRE ALARM SYSTEM

R.B. Allen
P.O. # TBD
06-19-09

Sheet 1 of 1
Drawn By: LCB
Date: 06-19-09
Ocean Ave School

A1 FIRST FLOOR SYSTEMS PLAN - SEG. A



- TECHNICAL NOTES:**
- 1) CARE SOUND SYSTEM VOLUME PROGRAM SELECTION CONTROL SWITCHES - MOUNT @ 5' AFF TO CENTER
 - 2) GYM SOUND SYSTEM LOUSPEAKERS - SERVO @ 15' AFF TO CENTER W/ ATN FLOOR OVERVIEW AREA - LOUSPEAKERS RIGGING OR EQUAL, MOUNTING OF HANG, BACK OF SPEAKER SHALL BE NOT MORE THAN 15" FROM THE EXT. WALL.
 - 3) REFER TO DETAIL, A125-503.
 - 4) SPARKER ENTRANCE - COORDINATE EXACT SPARKER ENTRANCE WITH SPARKER CONTRACTOR.
 - 5) 4" P. CONDUITS FOR TELECOM SERVICE TO 5' AFF N 11'25" ABOVE.
 - 6) HANGING CLAS GRABER FOR BOYS AT 10' AFF TO RAIL PIPES, CONDUIT FROM FLOOR TO ROOF DECK.
 - 7) SCOREBOARD CONTROLS - COORDINATE EXACT MOUNTING HEIGHT WITH INTERIOR ELEVATIONS.
 - 8) PROVIDE DATA JACK W/ STATIC IP ADDRESS AT 11' AFF CONTROL PANEL.
 - 9) GYM SOUND SYSTEM VOLUME PROGRAM SELECTION CONTROL SWITCHES - MOUNT @ 5' AFF TO CENTER PROVIDE WIRE GUARD SIMILAR TO THAT USED FOR FIRE ALARM PULL STATIONS TO PROTECT SWITCHES.
 - 10) FLOOR BOX EQUAL TO ACE BACKSTAGE CO. FULL STRIKE PROTECT, MODEL #1251 - FINISH 1" BY 1" (1) 1/2" DIA. PANEL W/ (3) 1/2" DIA. CONNECTORS, (2) DATA CONNECTORS, & (1) SPEAKON CONNECTOR. PROVIDE BOX W/ BRACKET #125100.

REV.	DESCRIPTION	DATE
1	ADDITIONAL	04-14-08
0	BID DOCUMENTS	04-02-2009

BID DOCUMENTS
04-02-09

CURRENT ISSUE STATUS:

WBRCC
ARCHITECTS & ENGINEERS
1000 W. MAIN ST., SUITE 200
PORTLAND, ME 04102
WWW.WBRCC.COM

PROJECT: OCEAN AVENUE ELEMENTARY SCHOOL
PORTLAND, ME

SHEET TITLE: FIRST FLOOR SYSTEMS PLAN - SEG. A

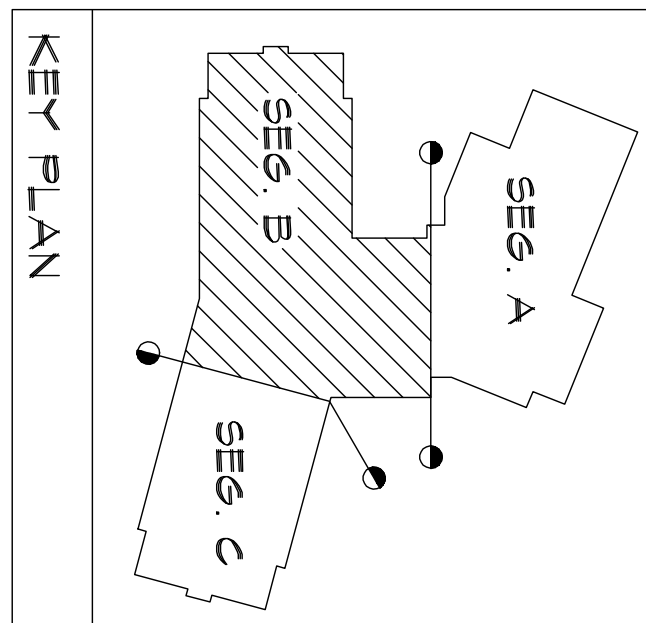
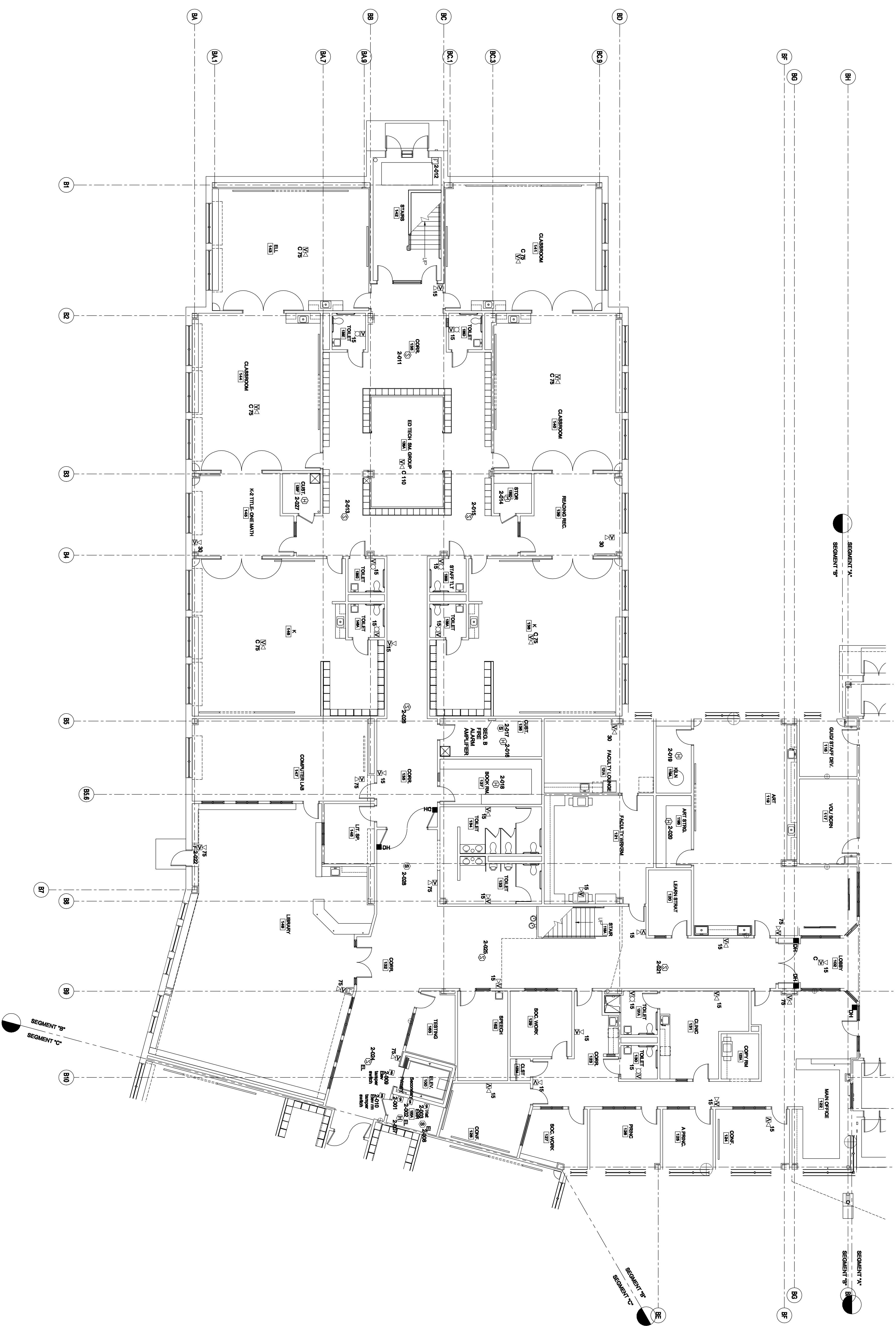
WBRCC FILE: 331610-EX101-A
DATE: 04-02-09

SCALE: 1/8" = 1'-0"
PROJECT MANAGER: MEC
DESIGNER: JBL
CHECKED BY: SLL

STATE OF MAINE
REGISTERED PROFESSIONAL ENGINEER
No. 10272
JAMES W. BROWN

A1 FIRST FLOOR SYSTEMS PLAN - SEG. B

1/8" = 1'-0"



- TECHNICAL NOTES:**
- 1) PROVIDE 3/4" CONDUITS FROM 6" ABOVE FIRST FLOOR CABLE TRAY TO 8" A.F.F. IN IT ROOM 201C.
 - 2) PROVIDE 3/4" CONDUITS FROM 201C DEPENDING TO 6" ABOVE CABLE TRAY. SEE SHEET EY100-8 FOR CONTINUATION.
 - 3) REFER TO DETAIL 412E-50A.
 - 4) OBSERVE YOU ALSO MONITORING & SERIAL SERVER TO DETAIL EY1-502 FOR MORE INFORMATION.
 - 5) PROVIDE DATA JACK W/ STATIC P ADDRESS AT/1W/C CONTROL PANEL.
 - 6) TERMINATE CABLE TRAY AT SOFFIT WALL.
 - 7) ACCESS CONTROL SYSTEM PANEL BUTTON - FIELD COORDINATE EXACT LOCATION BENEFIT OWNERS FURNITURE OR CASEWORK.
 - 8) COORDINATE TEL/MATA JACK LOCATION WITH CASEWORK PANEL.
 - 9) END CABLE TRAY 9 BEFORE EDGE OF RADIANT CEILING PANEL.

BID DOCUMENTS
04-02-09

CURRENT ISSUE STATUS:

NO.	DESCRIPTION	DATE
1	ADDENDUM #2	04.23.09
2	ADDENDUM #1	04.14.09
0	BID DOCUMENTS	04-02-2009

WBRCC
ARCHITECTS & ENGINEERS
1000 W. MAIN ST., SUITE 200
ANN ARBOR, MI 48106-1500
TEL: 734.769.1234
WWW.WBRCC.COM

STATE OF MICHIGAN
REGISTERED PROFESSIONAL ENGINEER
No. 102772
EXPIRES 12/31/10

PROJECT: OCEAN AVENUE ELEMENTARY SCHOOL
PORTLAND, MI

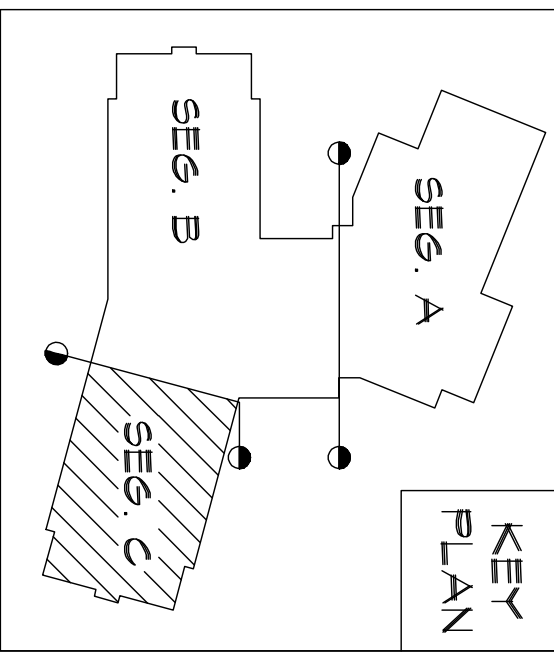
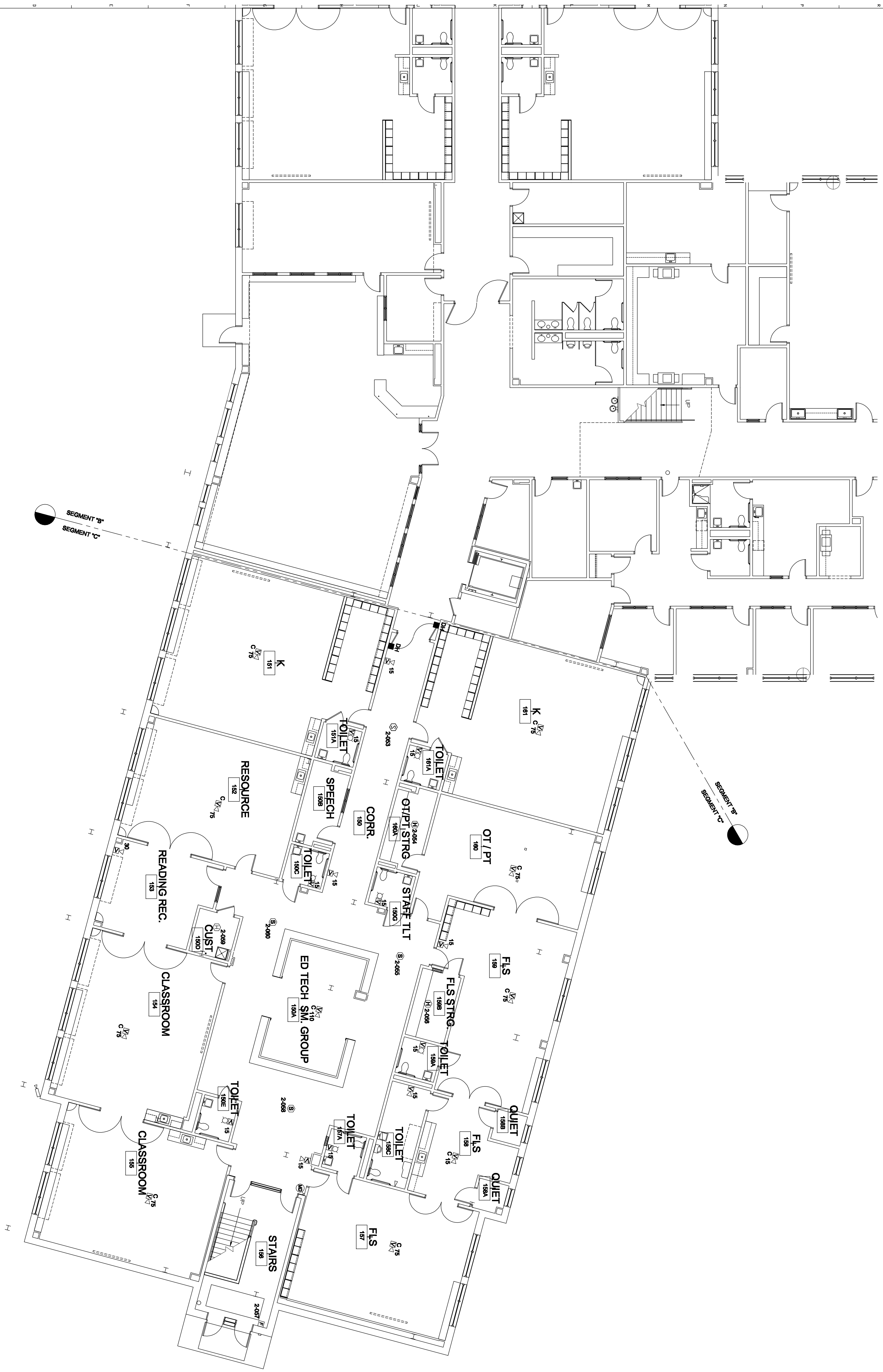
SHEET TITLE: FIRST FLOOR SYSTEMS PLAN - SEG. B

WBRCC FILE: 331610-09
PROJECT NO.: 331610-EY101-B

SCALE: 1/8" = 1'-0"
PROJECT MANAGER: MJC
DESIGNER: JBL
CHECKED BY: SLL

EY101-B

A1 FIRST FLOOR ELECTRICAL SYSTEMS PLAN - SEG. C



KEY PLAN

TECHNICAL NOTES:

① REFER TO DETAIL J125-603.

② OBSERVATION AND MONITORING SYSTEM REFER TO DETAIL J125-603.

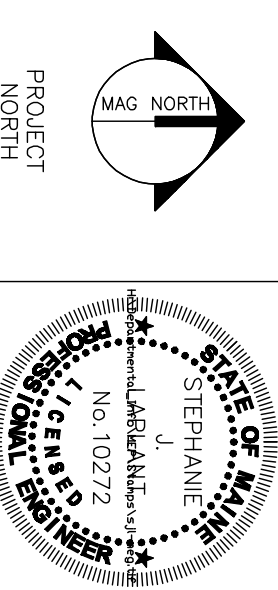
③ MONITOR TO BE HOUSED IN OASISWORK, THIS ROOM ONLY.

REV	DESCRIPTION	DATE
1	ADDITIONAL	04-23-08
0	BID DOCUMENTS	04-02-2009

BID DOCUMENTS

04-02-09

CURRENT ISSUE STATUS:



WBRCE

ARCHITECTS & ENGINEERS

100 WATER STREET, SUITE 200
PORTLAND, MAINE 04101
WWW.WBRCE.COM

PROJECT: OCEAN AVENUE ELEMENTARY SCHOOL
PORTLAND, ME

FIRST FLOOR ELECTRICAL SYSTEMS PLAN - SEG. C

SHEET TITLE: 331610-EY101-C

PROJECT NO: 331610

SCALE: AS NOTED

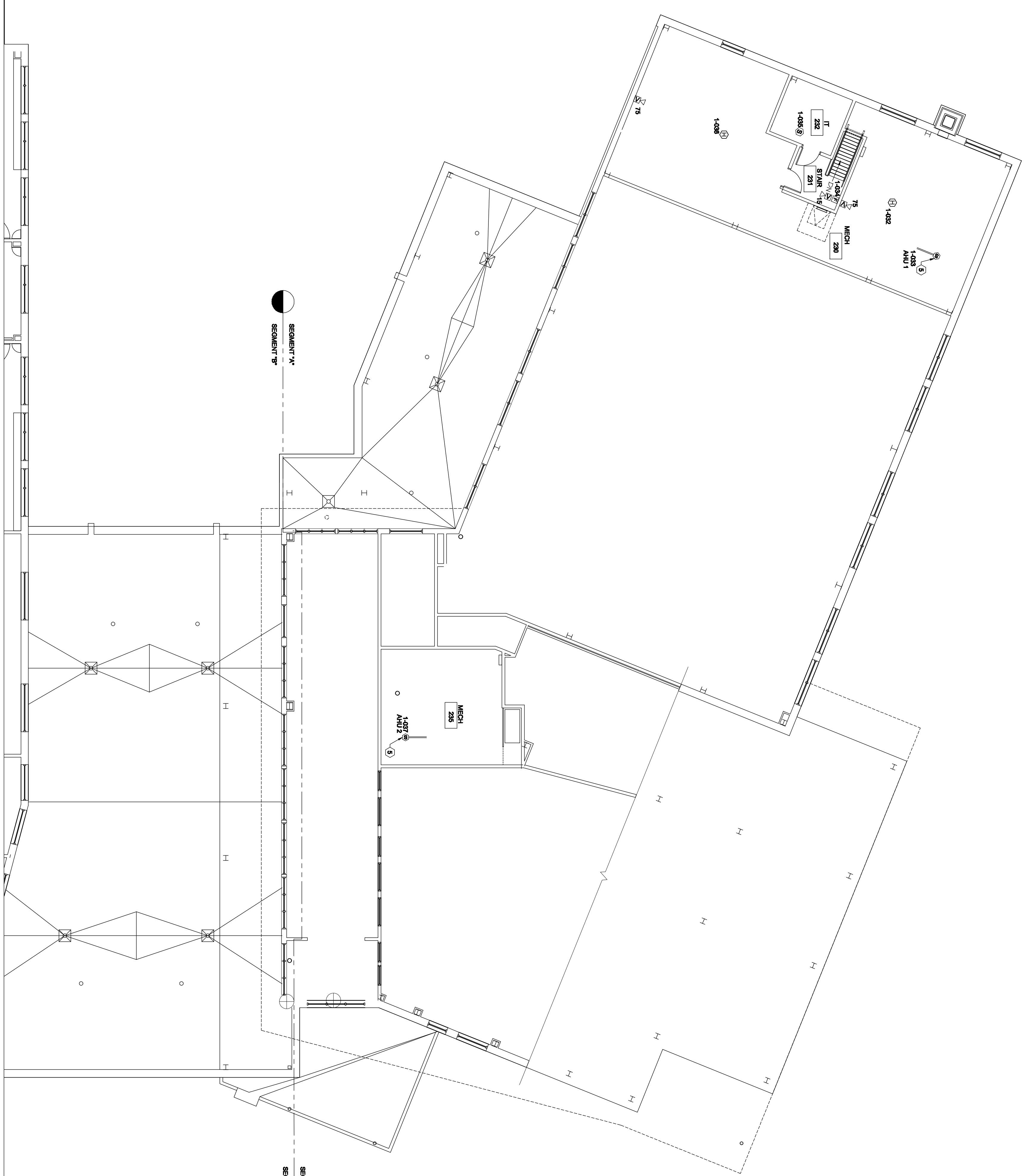
PROJECT MANAGER: JBL

DRAWN BY: JBL

CHECKED BY: SAJ

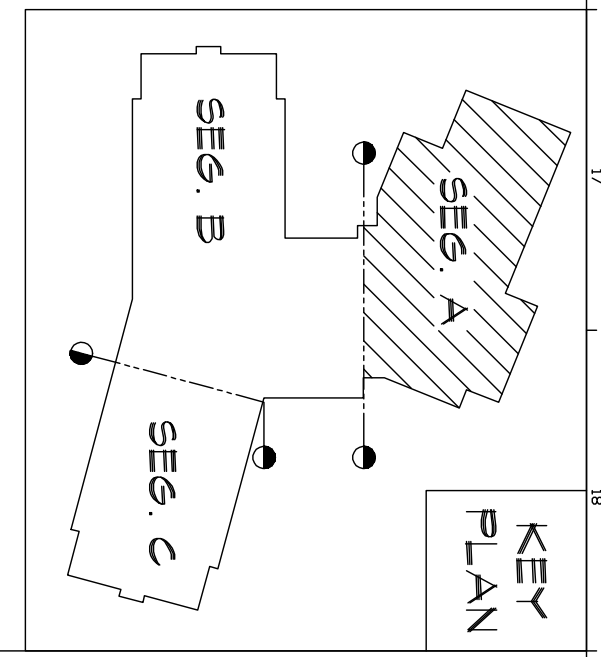
EY101-C

A1
 SECOND FLOOR ELECTRICAL SYSTEMS PLAN - SEG. A



SEGMENT 'A'
 SEGMENT 'B'

SEGMENT 'A'
 SEGMENT 'B'



- TECHNICAL NOTES:**
- 1 PROVIDE 8" CONDUITS ALONG MECHANICAL ROOM AND GYM CEILING FOR COMMUNICATIONS & SECURITY CABLEING. PROVIDE FULCRUM AS REQUIRED.
 - 2 PROVIDE DATA JACK W/ STATIC P ADDRESS AT HVAC CONTROL PANEL.
 - 3 9" SQUARE CLEAR SPACE FOR ROOF HATCH DO NOT BLOCK PIPES, CONDUIT, ETC. FROM FLOOR TO ROOF.
 - 4 RACK MOUNTED SECURITY ALARM CONTROL PANEL.
 - 5 DET MOUNTED SMOKE DETECTOR PROVIDED BY DIV 21. INSTALLED BY DIV. 23 & CONNECTED TO FIRE FROM NEARBY RECEIVING CIRCUIT.

PROJECT: OCEAN AVENUE ELEMENTARY SCHOOL
 PORTLAND, ME

PROJECT NO: 04-02-019

DATE: 06.03.09

SCALE: AS NOTED

PROJECT MANAGER: MEJ
 DRAWN BY: EY102-A

DESIGNED BY: AE (IF REQUIRED)

WBRC
 ARCHITECTS & ENGINEERS

1000 W. MAINE STREET
 PORTLAND, ME 04102

PROJECT: OCEAN AVENUE ELEMENTARY SCHOOL
 PORTLAND, ME

PROJECT NO: 04-02-019

DATE: 06.03.09

SCALE: AS NOTED

PROJECT MANAGER: MEJ
 DRAWN BY: EY102-A

DESIGNED BY: AE (IF REQUIRED)

STATE OF MAINE
 REGISTERED PROFESSIONAL ENGINEER
 No. 10272
 STEPHANIE J. BROWN

PERMIT APPLICATION
 SUBMISSION 3-18-09

CURRENT ISSUE STATUS:

REV.	DESCRIPTION	DATE
0		06.03.09

SHEET TITLE: SECOND FLOOR ELECTRICAL SYSTEMS PLAN - SEG. A

WPC Dwg FILE: 331610-Drawing Sheet 01

SCALE: AS NOTED

PROJECT MANAGER: MEJ
 DRAWN BY: EY102-A

DESIGNED BY: AE (IF REQUIRED)

PROJECT: OCEAN AVENUE ELEMENTARY SCHOOL
 PORTLAND, ME

PROJECT NO: 04-02-019

DATE: 06.03.09

SCALE: AS NOTED

PROJECT MANAGER: MEJ
 DRAWN BY: EY102-A

DESIGNED BY: AE (IF REQUIRED)

STATE OF MAINE
 REGISTERED PROFESSIONAL ENGINEER
 No. 10272
 STEPHANIE J. BROWN

PERMIT APPLICATION
 SUBMISSION 3-18-09

CURRENT ISSUE STATUS:

REV.	DESCRIPTION	DATE
0		06.03.09

SHEET TITLE: SECOND FLOOR ELECTRICAL SYSTEMS PLAN - SEG. A

WPC Dwg FILE: 331610-Drawing Sheet 01

SCALE: AS NOTED

PROJECT MANAGER: MEJ
 DRAWN BY: EY102-A

DESIGNED BY: AE (IF REQUIRED)

PROJECT: OCEAN AVENUE ELEMENTARY SCHOOL
 PORTLAND, ME

PROJECT NO: 04-02-019

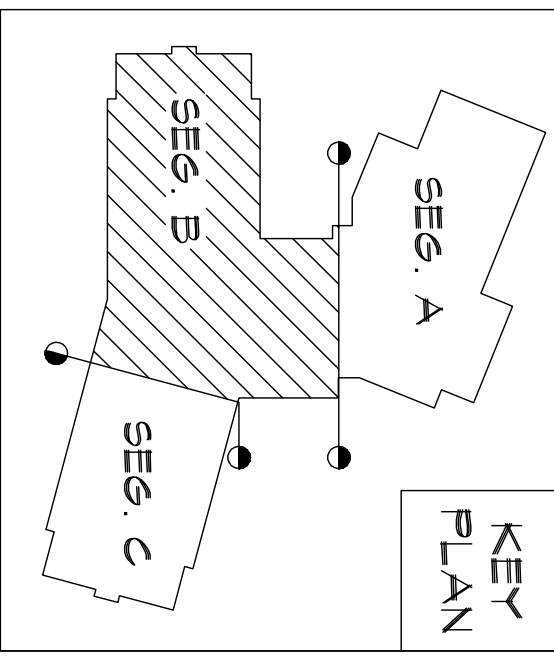
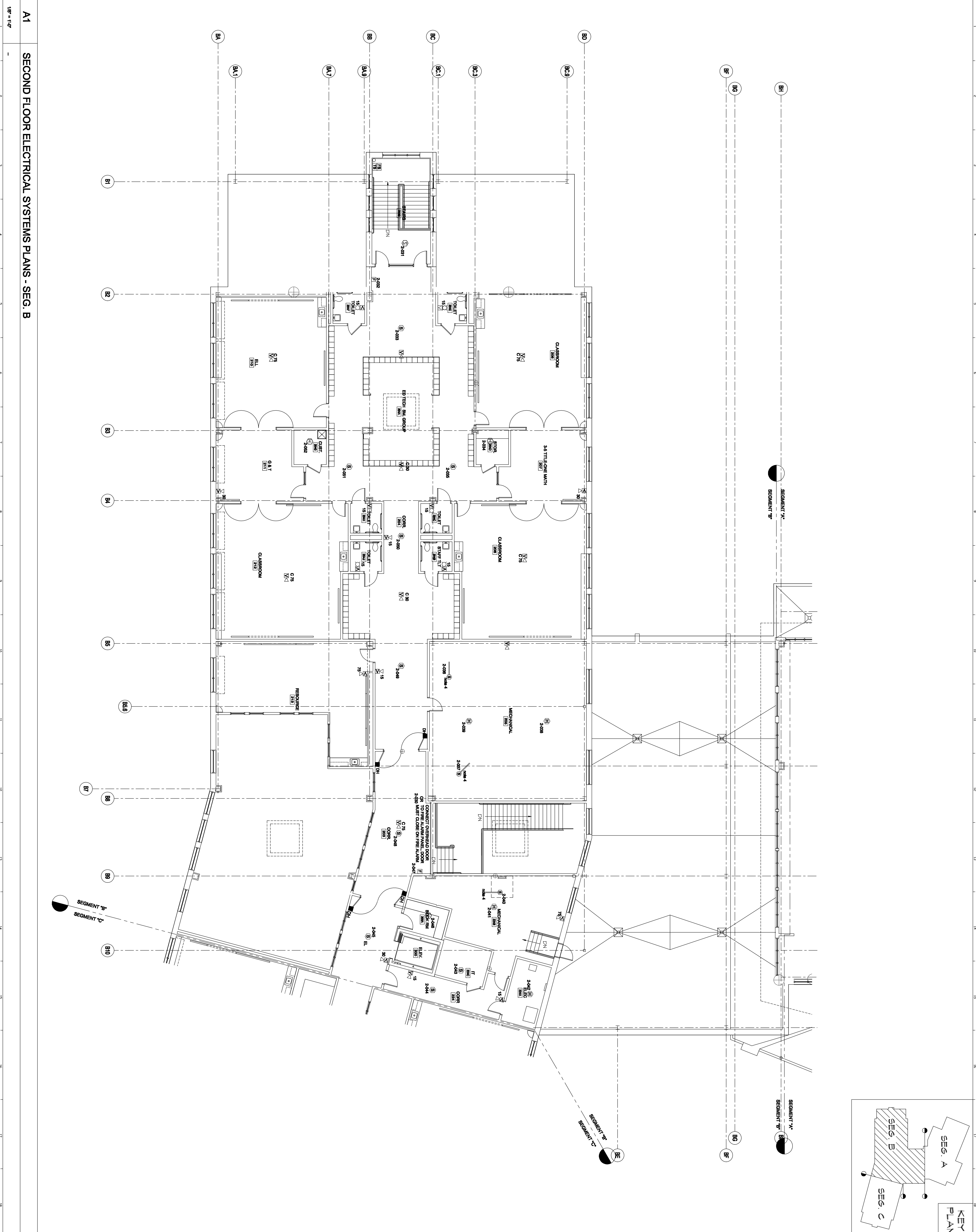
DATE: 06.03.09

SCALE: AS NOTED

PROJECT MANAGER: MEJ
 DRAWN BY: EY102-A

DESIGNED BY: AE (IF REQUIRED)

A1 SECOND FLOOR ELECTRICAL SYSTEMS PLANS - SEG. B



- TECHNICAL NOTES:**
- REFER TO DETAIL 112E-50A.
 - 8" x 4" CONDUITS FROM 12" ABOVE SUSPENDED CEILING IN COR. 128 SECTION TO 12" AFF. 1185 FLOOR.
 - FLOW & TRIPPER SWITCHES & SPRINKLER LOCATIONS W/ SPRINKLER CONTRACTOR.
 - DUCT HANDED SHAPER SYSTEMS REQUIRED BY DIV./24 INSTALLED BY DIV. 23 & CONNECTED TO FIRE FROM NEARBY RECEIVABLE CIRCUIT.
 - 9" SQUARE CLEAR SPACE FOR ROOF HATCH DO NOT RUN PIPES, CONDUIT, ETC. FROM FLOOR TO ROOF DECK.
 - PROVIDE DATA JACK W/ STATIC IP ADDRESS AT HVAC CONTROL PANEL.
 - 8" x 4" CONDUITS FROM 12" ZEE BRCP THROUGH SLOPED ROOF ADJACENT TO MECHANICAL LOUVER 118. SEE SHEET EY101B FOR CONTINUATION.

WBRRC
 ARCHITECTS & ENGINEERS
 1000 W. MAIN ST., SUITE 200
 PORTLAND, ME 04101
 WWW.WBRRC.COM

PROJECT: OCEAN AVENUE ELEMENTARY SCHOOL
 PORTLAND, ME

SHEET TITLE: SECOND FLOOR ELECTRICAL SYSTEMS PLANS - SEG. B

WBRRC JOB FILE: 331610 EY102-B

SCALE: AS NOTED

PROJECT MANAGER: MJC

DRAWN BY: JBL

CHECKED BY: SML

DATE: 04-23-09

NO. 10272

STATE OF MAINE REGISTERED PROFESSIONAL ENGINEER

04-02-09

BID DOCUMENTS

CURRENT ISSUE STATUS: 04-02-09

REV.	DESCRIPTION	DATE
1	ADDENDUM #2	04-23-09
0	BID DOCUMENTS	04-02-09

