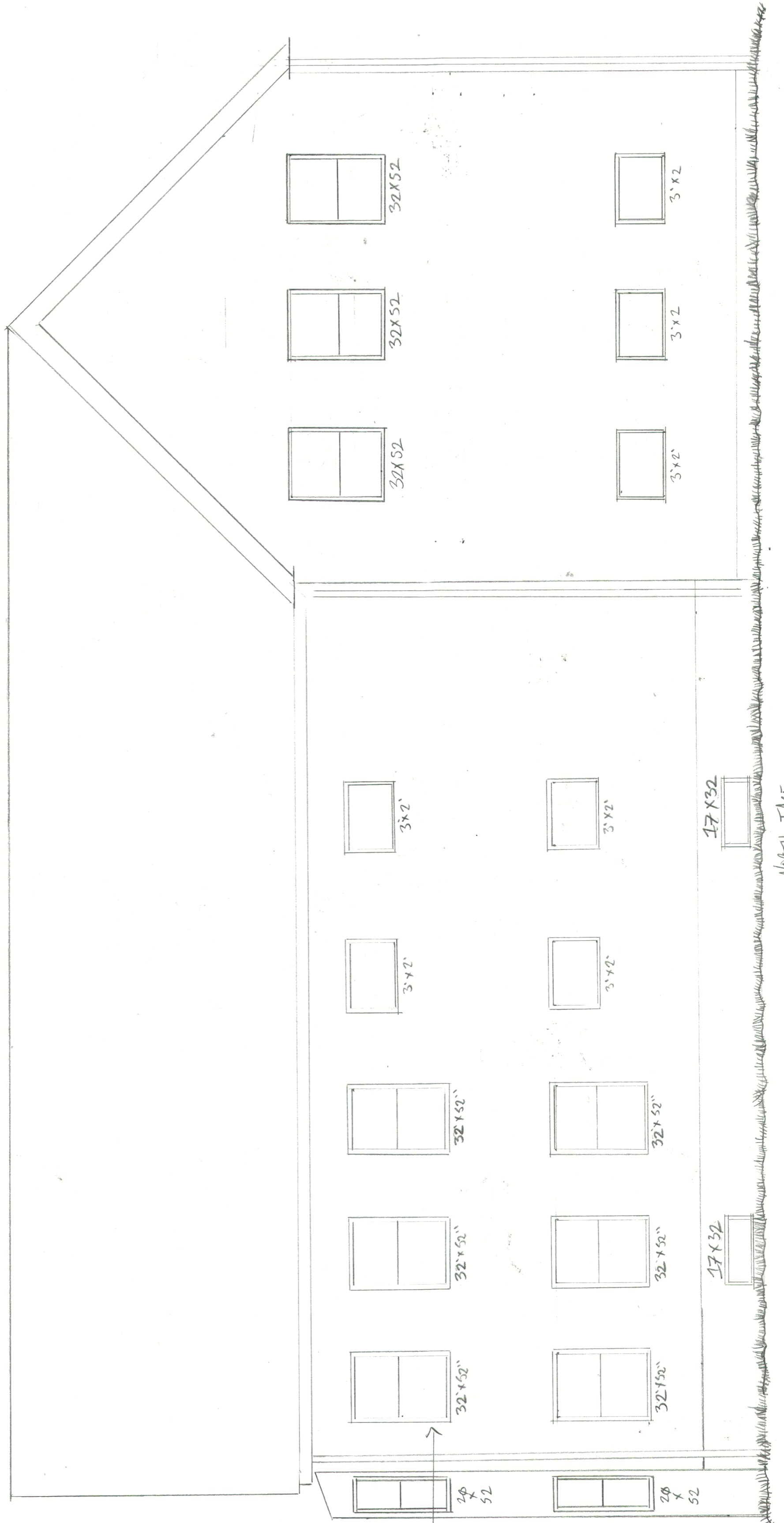


NORTH FACE ELEVATION
 24 FRUING ST. PORTLAND ME
 1/4 SCALE
 UPDATED OCT 8TH 2026



WINDOWS
 MEET EMERGENCY
 ESCAPE + RESCUE
 OPENINGS OF 5.7
 SQ. FT. (R310.1.1)
 ROUGH OPENINGS
 34" X 54" - 22" X 54"
 38" X 26"

NORTH FACE