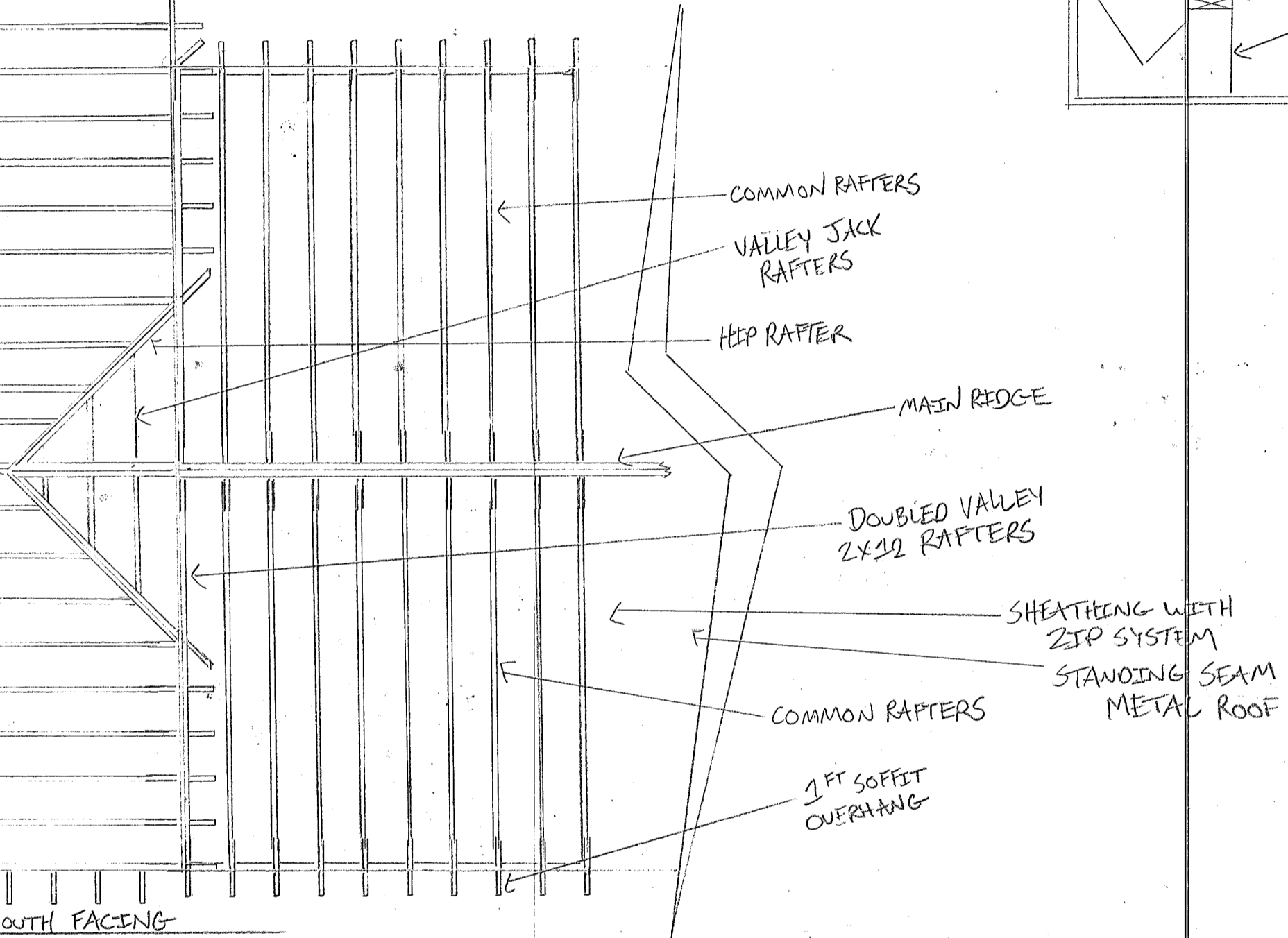
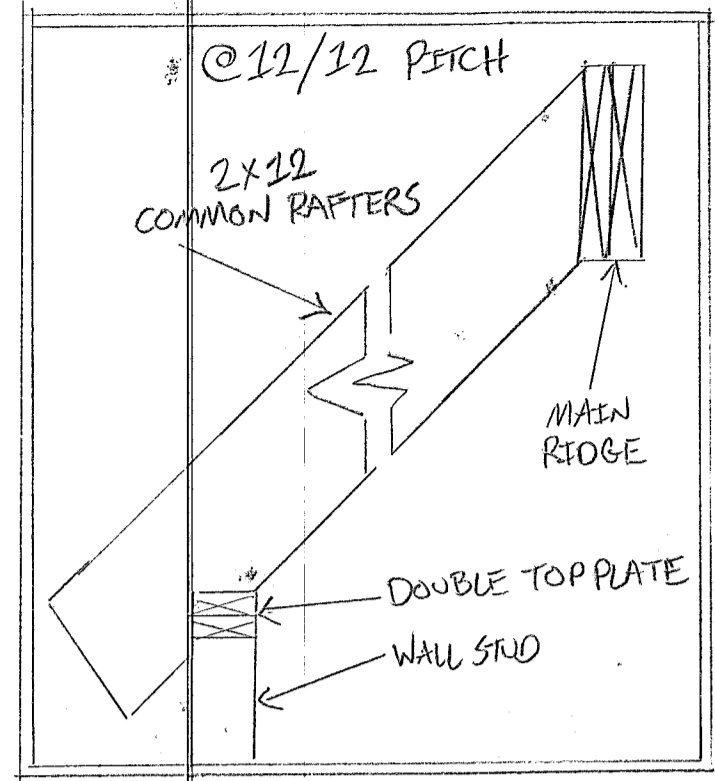
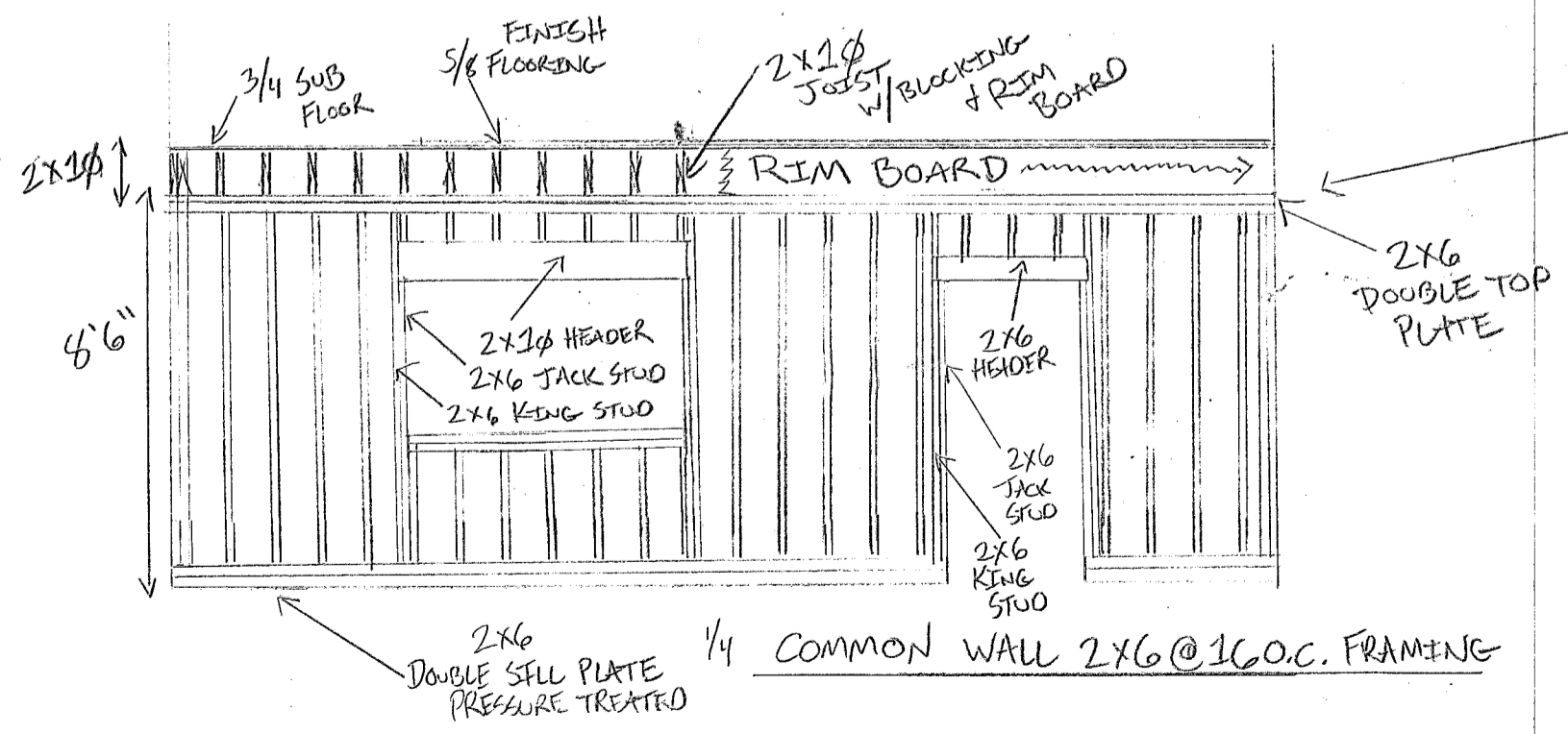
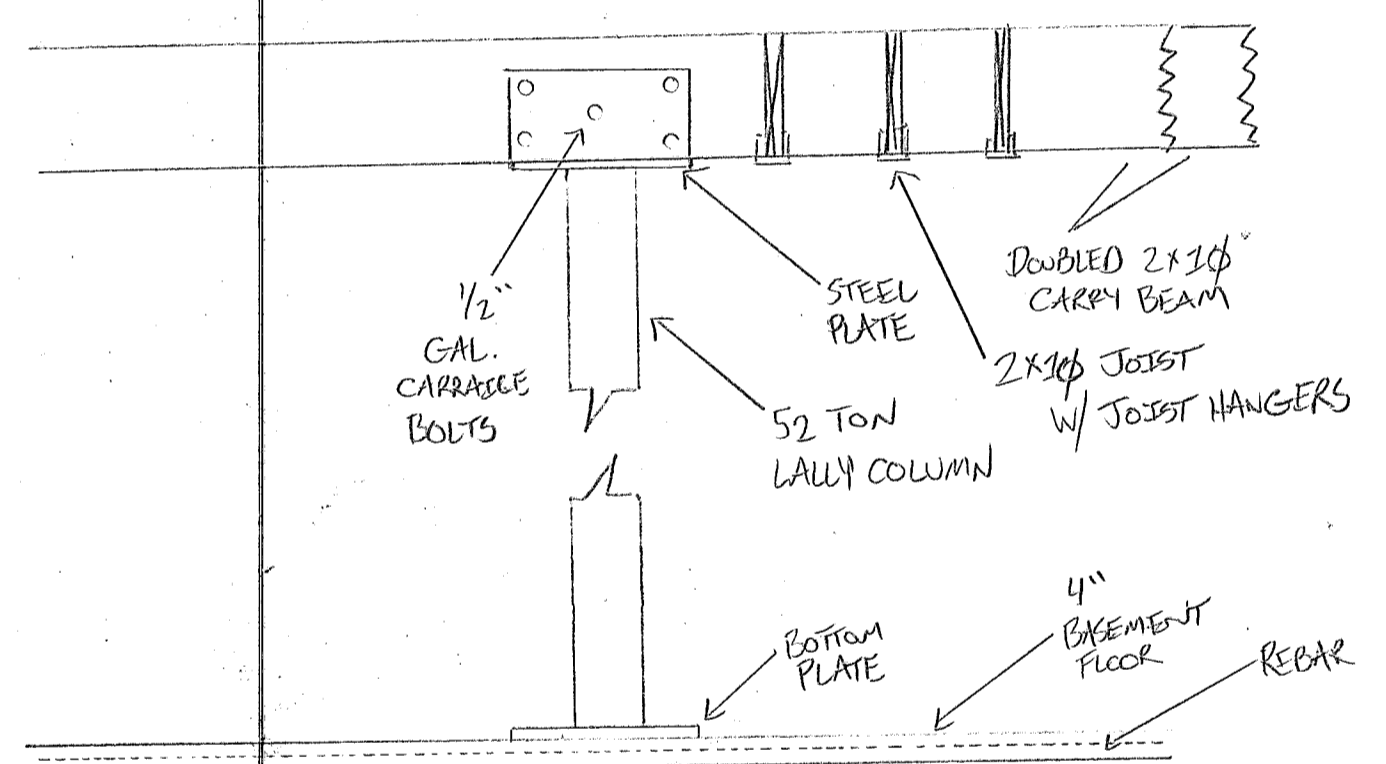


BIRDS EYE VIEW OF ROOF FRAMING AT 12-12 PITCH FOR 84 IRVING ST.

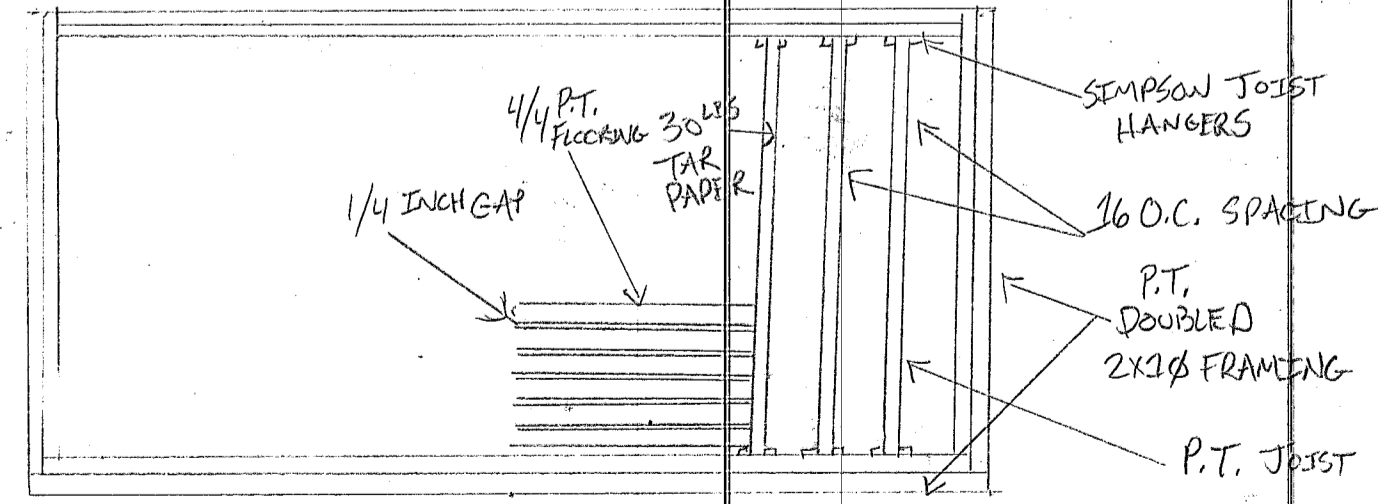


BASEMENT FLOOR FRAMING + SUPPORT



2 LAYERS OF 5/8 FIRE RATED SHEETROCK ON 1ST FLOOR

BIRD EYE VIEW



1/2 SCALE FRONT PORCH FRAMING WITH PRESSURE TREATED LUMBER