

APPLICANT:

SEA COAST AT  
BAXTER WOODS  
ASSOCIATES, LLC  
20 BLUEBERRY LANE  
FALMOUTH, MAINE  
04105

Project:  
**605 STEVENS AVE**  
PHASE 2 BUILDING 1

Revisions	Date	Description

ELECTRICAL SITE PLAN

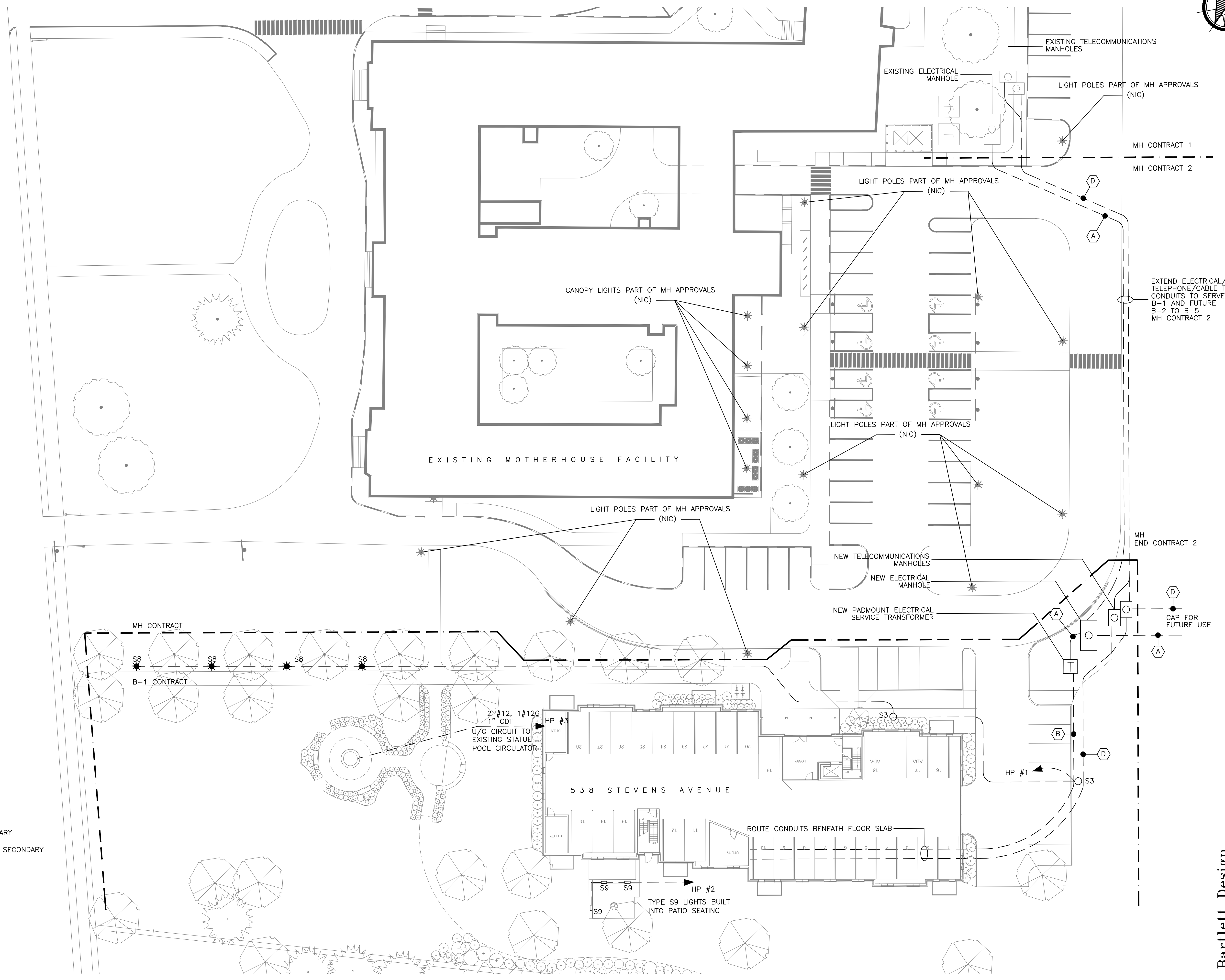
Phase:  
PERMITTING

**CARROLL ASSOCIATES**  
LANDSCAPE ARCHITECTS  
217 COMMERCIAL STREET, STE 200  
PORTLAND, MAINE 04101  
207.772.1502 V. F. 207.772.0712

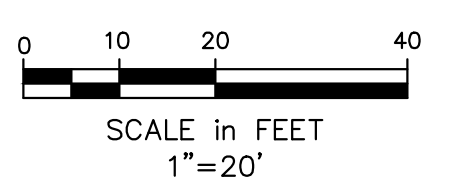
Date:  
August 14, 2017

Sheet No:

**E-1.0**



- (A) 2-5" UNDERGROUND CDTs. FOR CMP PRIMARY
- (B) 4-4" UNDERGROUND CDTs. FOR ELECTRICAL SECONDARY
- (C) NOT USED
- (D) 1-3" UNDERGROUND CDT. FOR TELEPHONE  
1-3" UNDERGROUND CDT. FOR CABLE TV



**Bartlett Design**  
LIGHTING & ELECTRICAL ENGINEERING  
942 WASHINGTON STREET, BATH, ME 04590  
TEL (207) 443-5447

Drawn By: LEB Approved By: LEB Scale: 1"=20'-0"