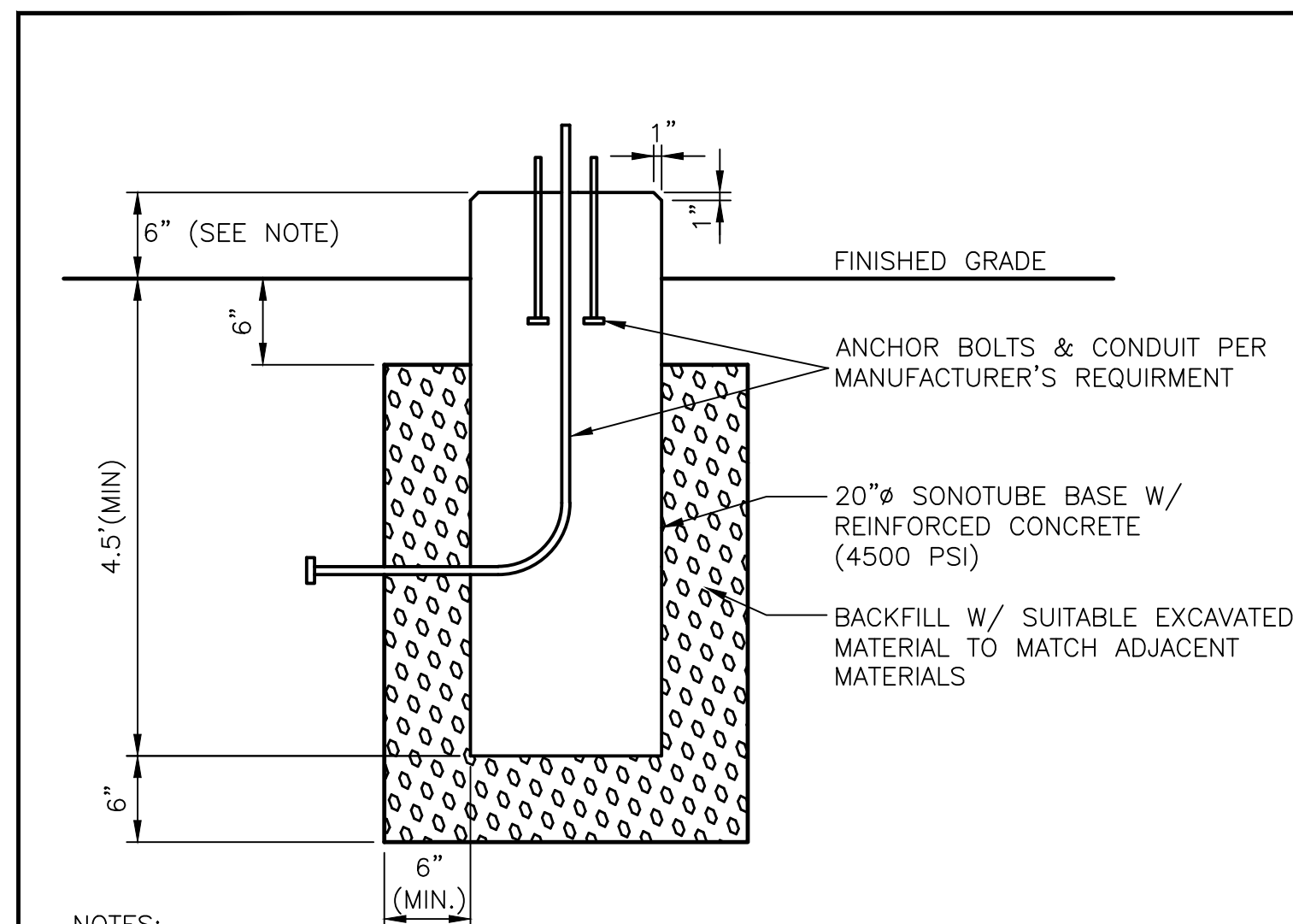
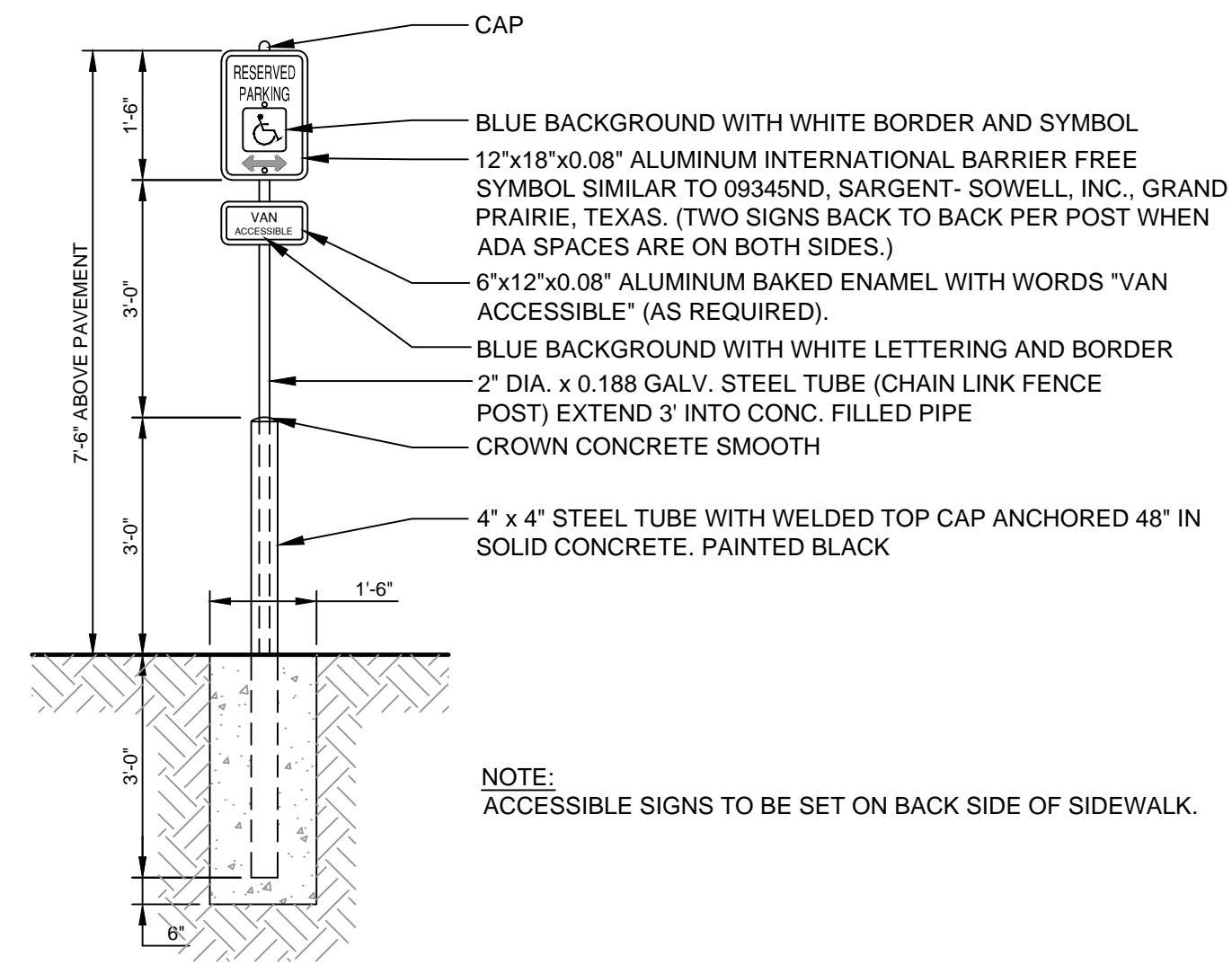


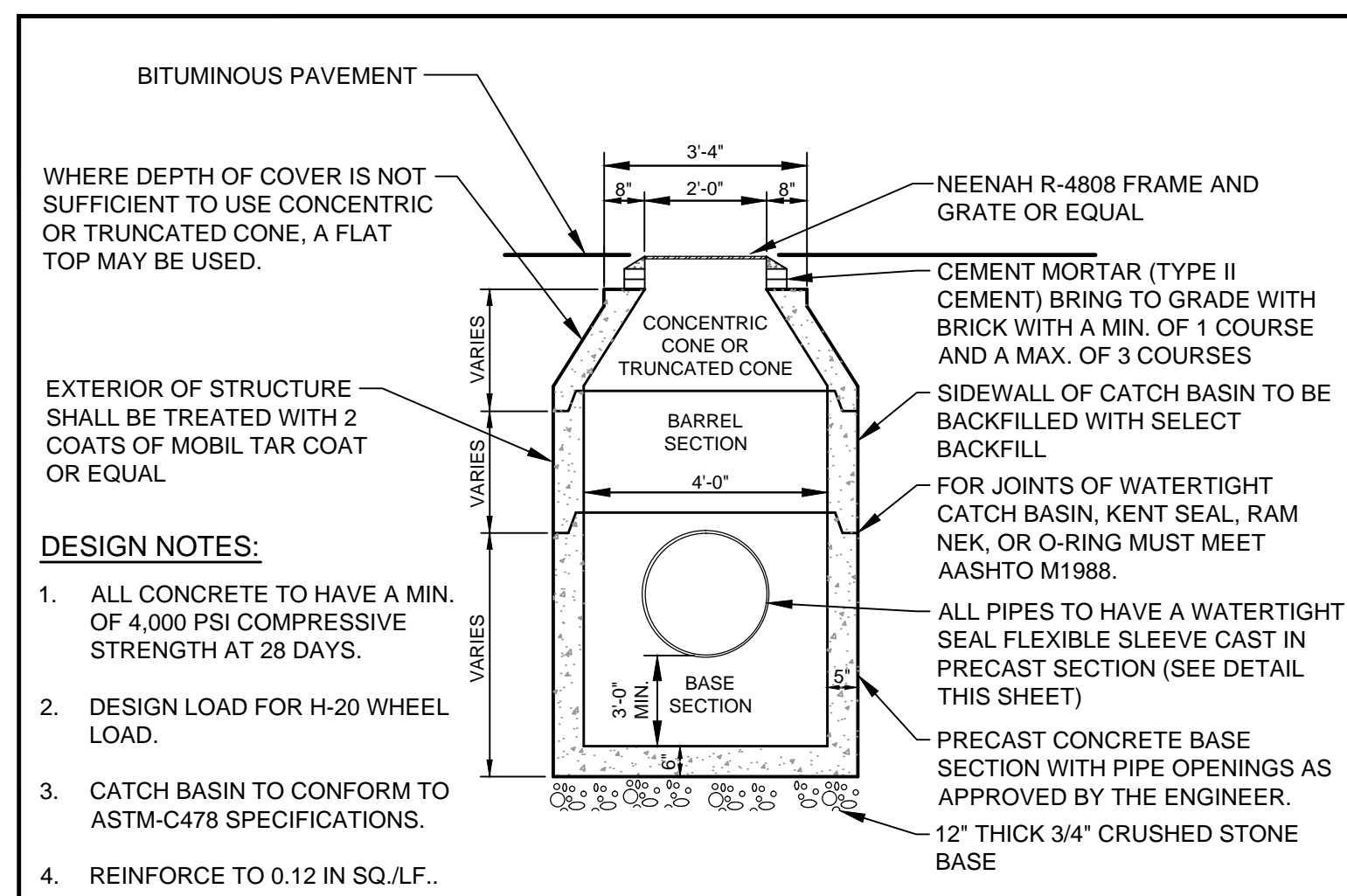
(A) PIPE BOLLARD DETAIL
N.T.S.



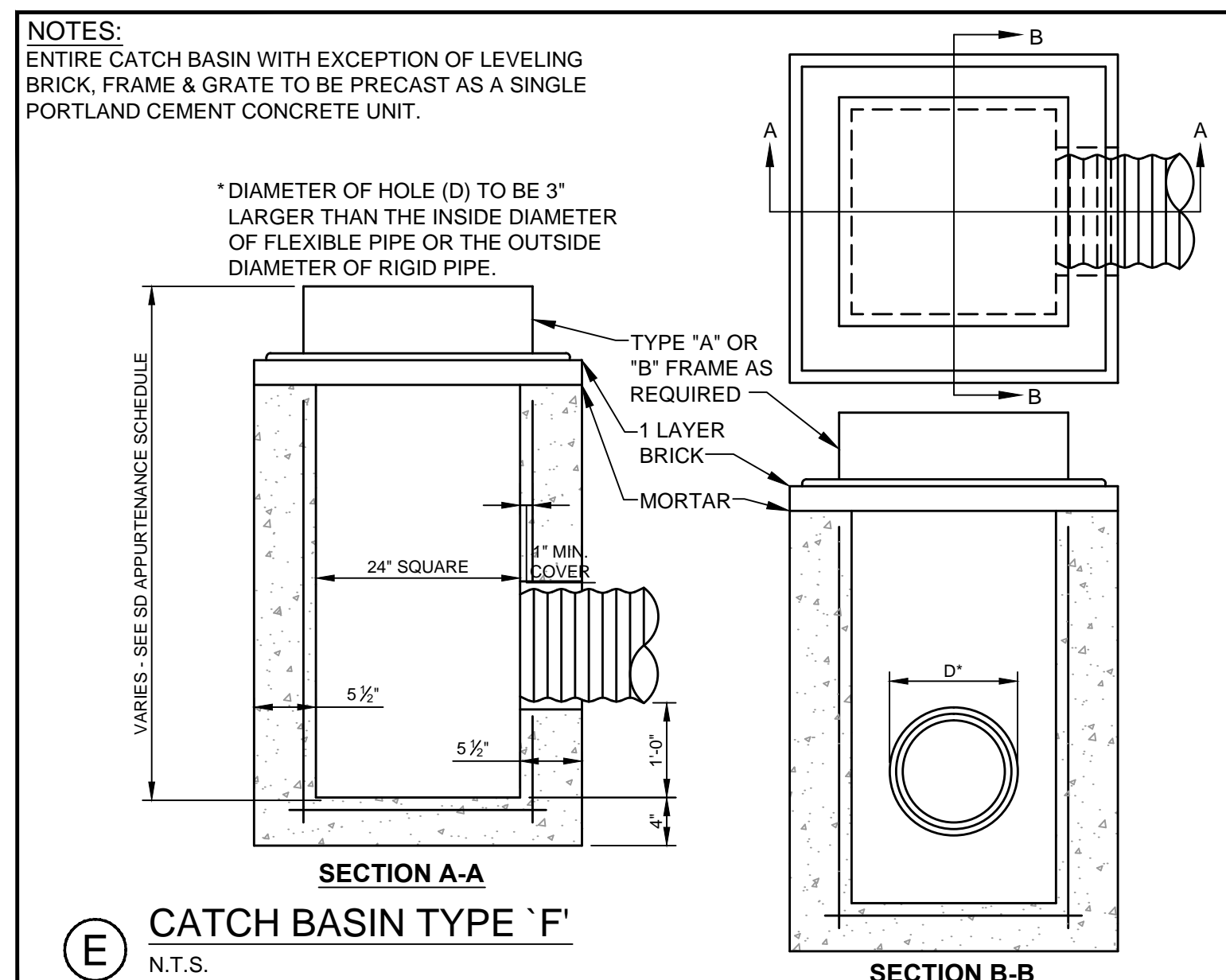
(B) TYPICAL PARKING LOT LIGHTING POLE FOUNDATION
N.T.S.



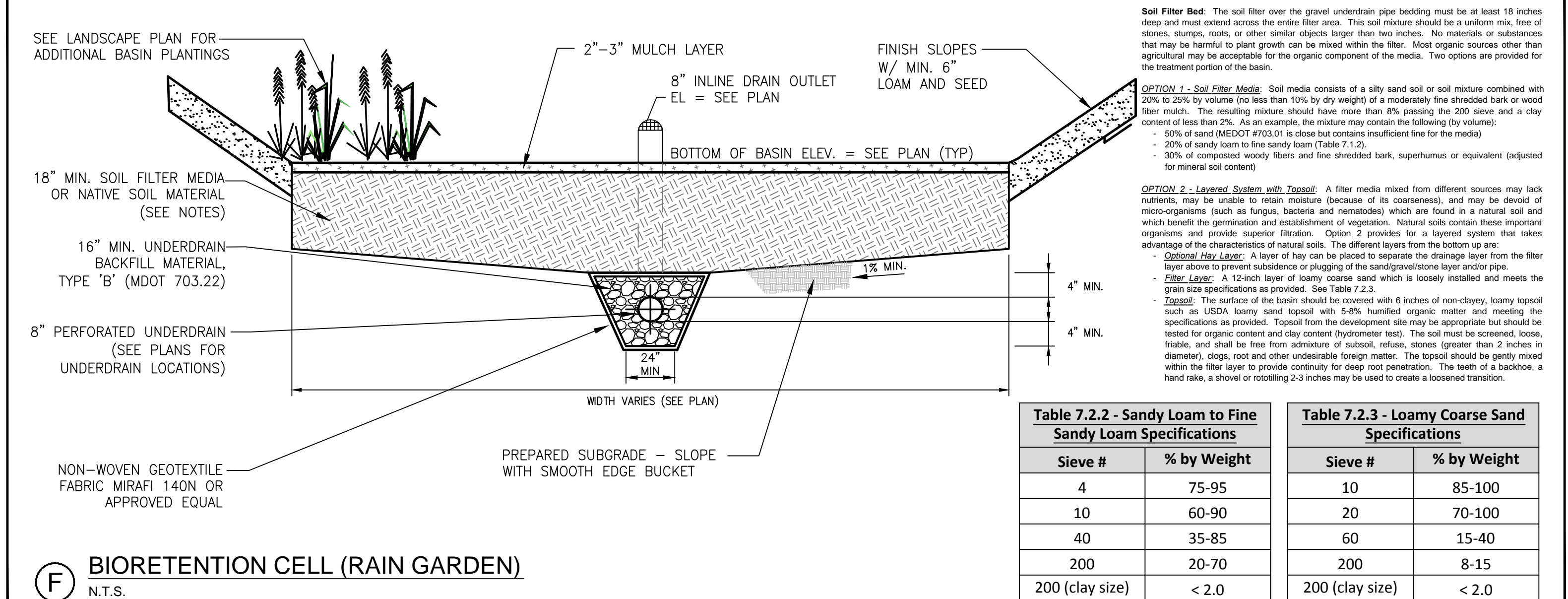
(C) BARRIER FREE PARKING SIGN
N.T.S.



(D) 4" PRECAST CATCH BASIN DETAIL
N.T.S.

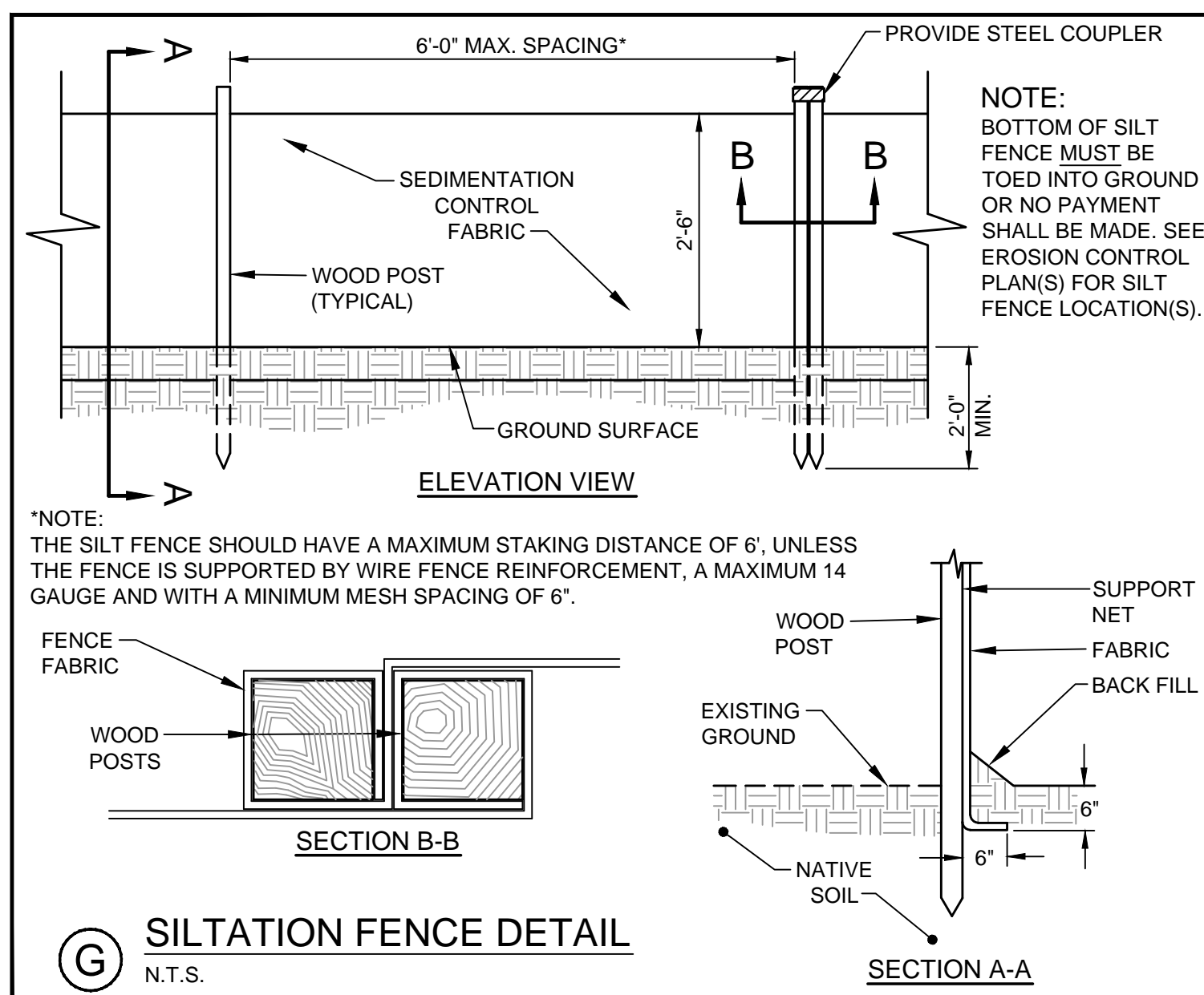


(E) CATCH BASIN TYPE 'F'
N.T.S.

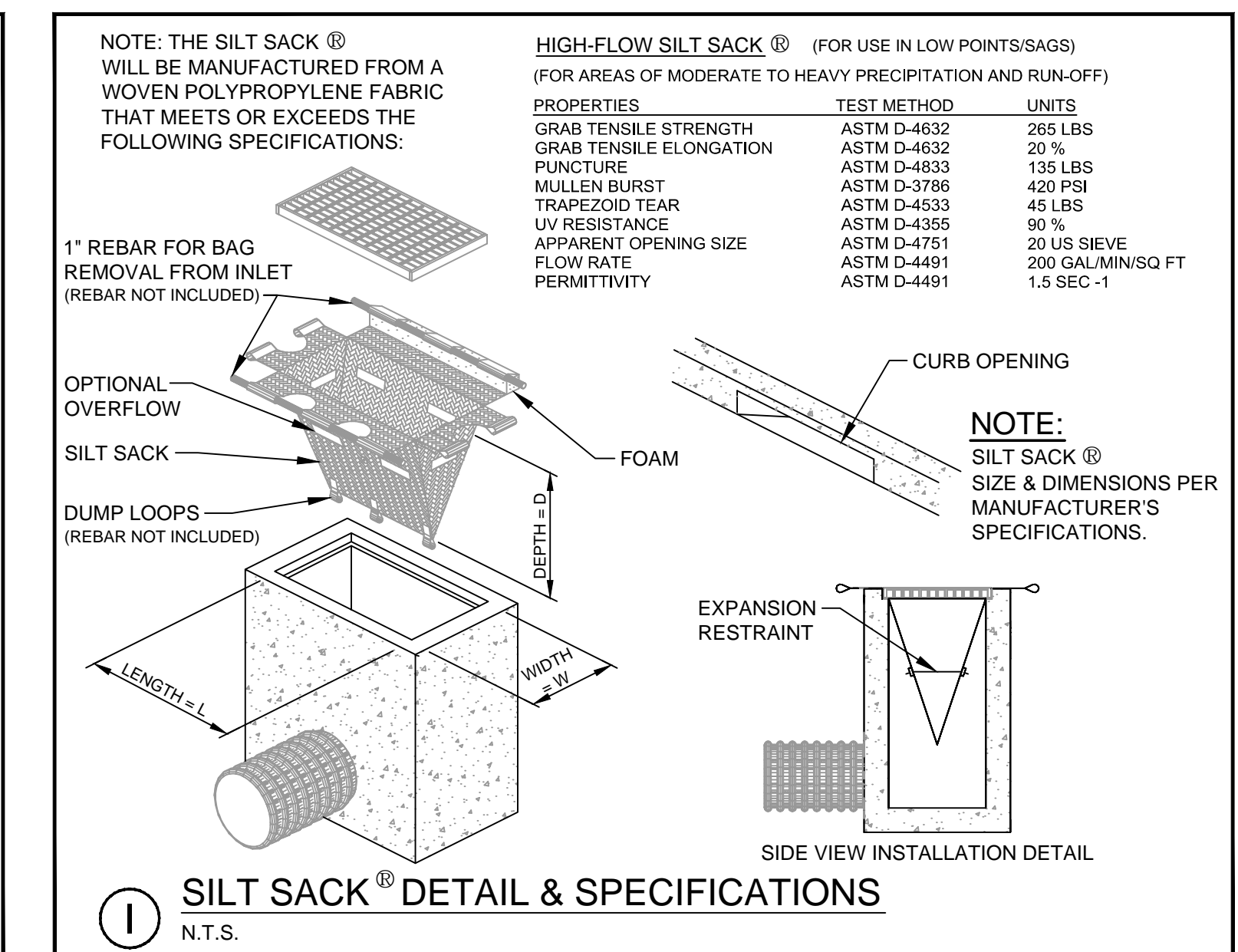


(F) BIORETENTION CELL (RAIN GARDEN)
N.T.S.

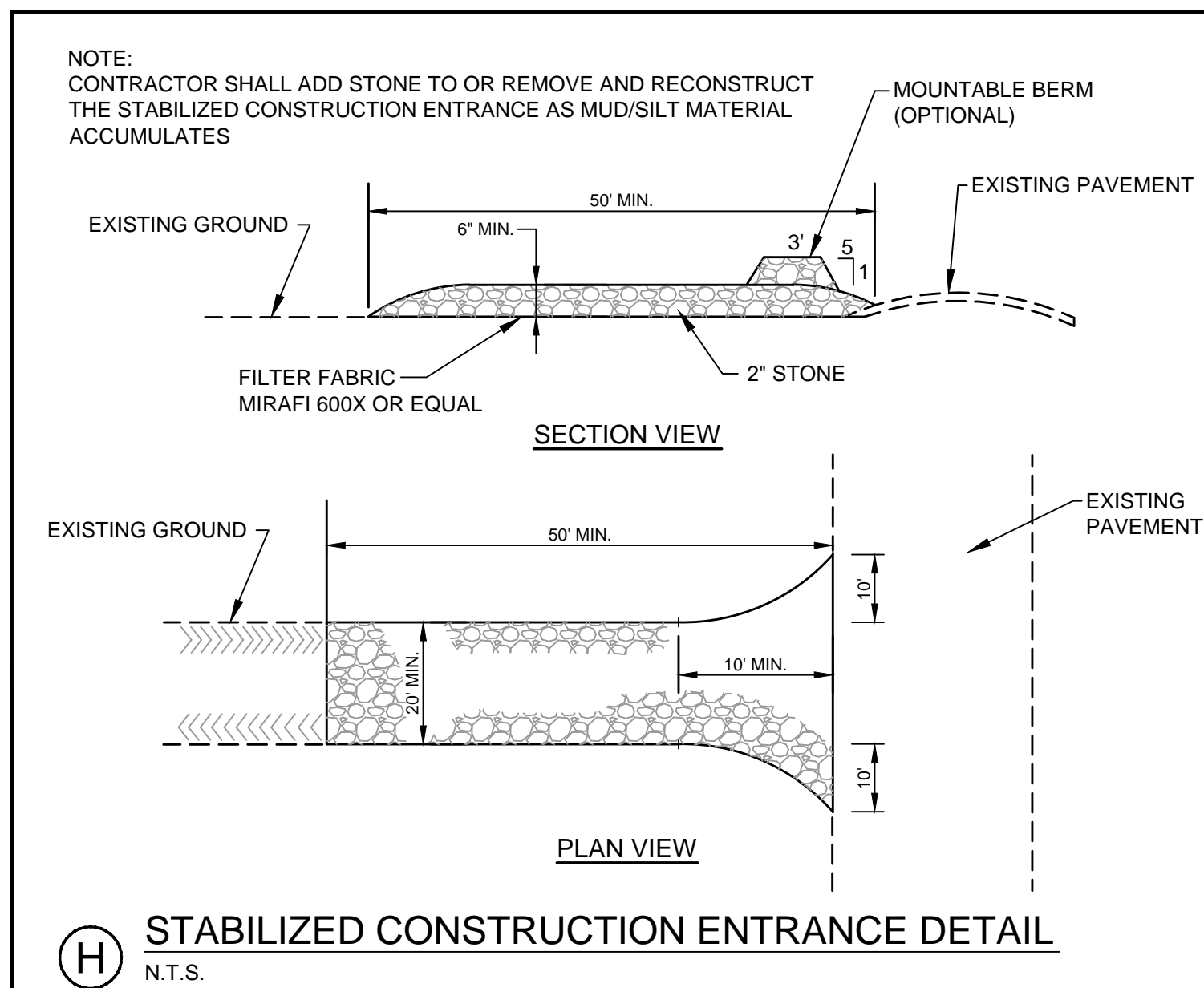
Table 7.2.2 - Sandy Loam to Fine Sandy Loam Specifications		Table 7.2.3 - Loamy Coarse Sand Specifications	
Sieve #	% by Weight	Sieve #	% by Weight
4	75-95	10	85-100
10	60-90	20	70-100
40	35-85	60	15-40
200	20-70	200	8-15
200 (clay size)	< 2.0	200 (clay size)	< 2.0



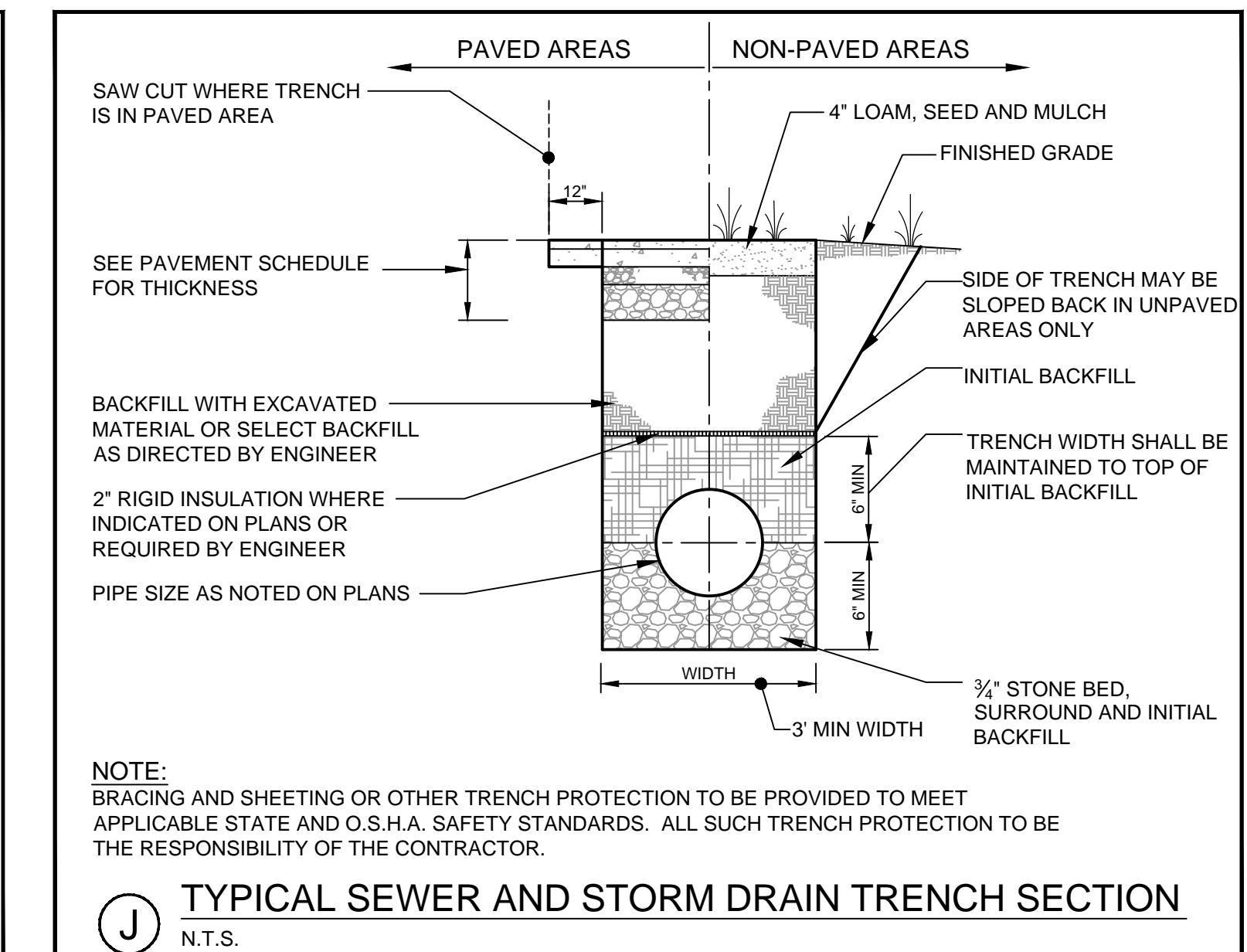
(G) SILTATION FENCE DETAIL
N.T.S.



(I) SILT SACK DETAIL & SPECIFICATIONS
N.T.S.

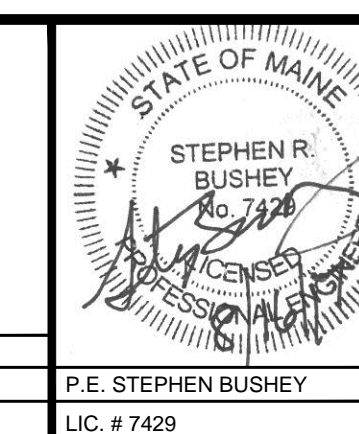


(H) STABILIZED CONSTRUCTION ENTRANCE DETAIL
N.T.S.



(J) TYPICAL SEWER AND STORM DRAIN TRENCH SECTION
N.T.S.

REV	DATE	DESCRIPTION
1	08.16.2017	CITY OF PORTLAND - LEVEL III SITE PLAN SUBMISSION



PROJECT	SEA COAST AT BAXTER WOODS BUILDING - 1 583 STEVENS AVENUE
SHEET TITLE	SITE, STORMWATER & EROSION CONTROL DETAILS
CLIENT	SEA COAST AT BAXTER WOODS, ASSOC., LLC

STANTEC CONSULTING SERVICES INC.	
482 PAYNE ROAD, SCARBOROUGH, MAINE 04074 WWW.STANTEC.COM	
DRAWN: PBF	DATE: AUG 2017
DESIGNED: SRB	SCALE: AS NOTED
CHECKED: SRB	JOB NO. 195350145
FILE NAME: SP-M162 DETAILS	
SHEET	C-7.2