

APPLICANT AND OWNER:

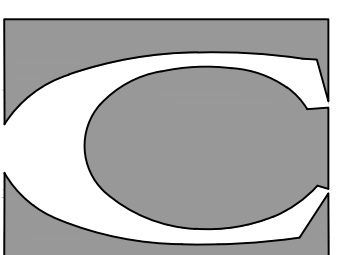
SEA COAST AT BAXTER WOODS ASSOCIATES, LLC
20 BLUEBERRY LANE FALMOUTH, ME 04105

SEA COAST AT BAXTER WOODS BUILDING - 1

Revisions	Date	Description
1	8/16/2017	CITY OF PORTLAND LEVEL III SITE PLAN SUBMIT

DEMOLITION AND TREE PRESERVATION PLAN

Phase: PERMITTING

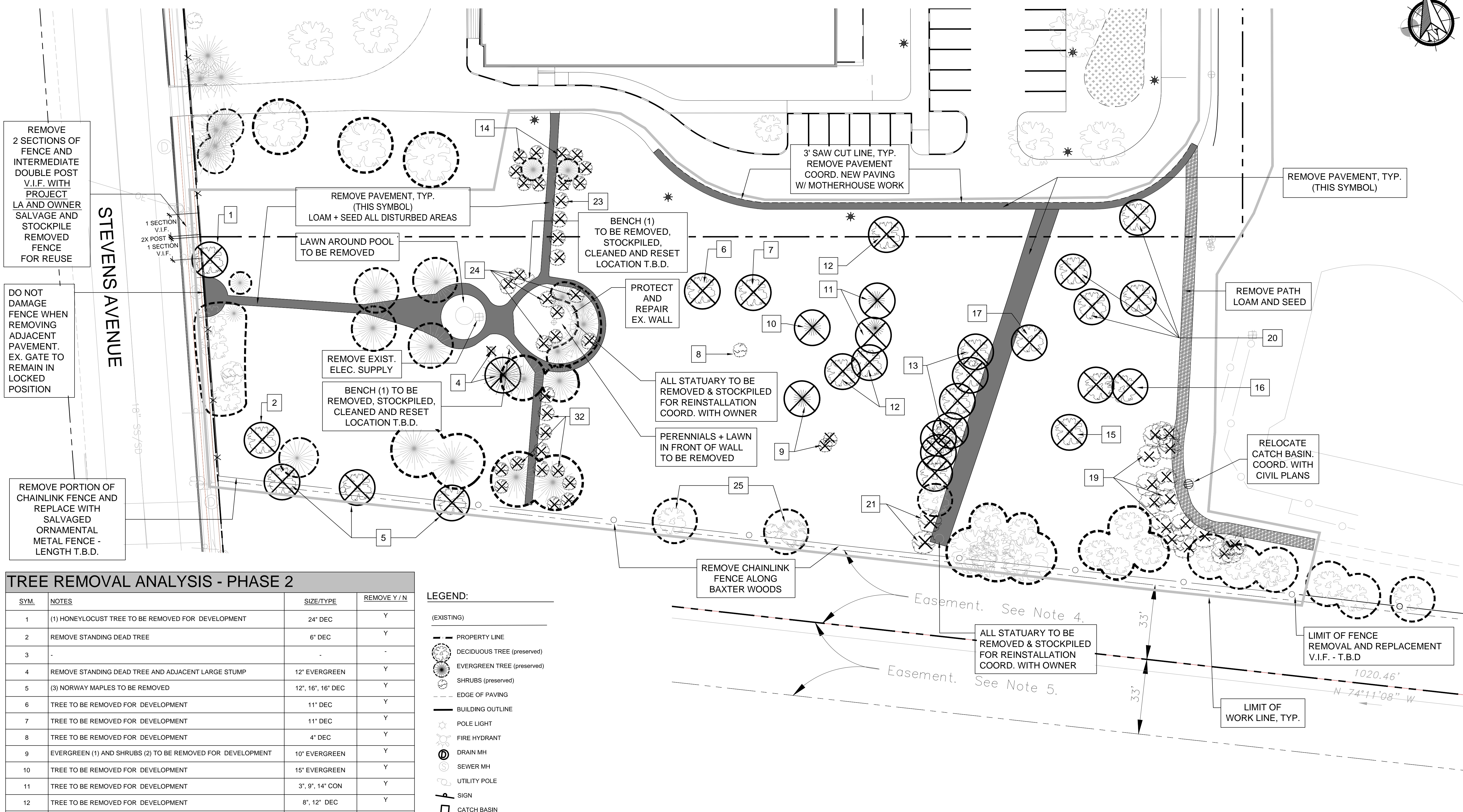


CARROLL ASSOCIATES
LANDSCAPE ARCHITECTS
217 COMMERCIAL STREET, STE 200
PORTLAND, MAINE 04101
207.772.1552 V. F. 207.772.5112

Date: DECEMBER 14, 2016

Sheet No:

C-3.0



TREE REMOVAL ANALYSIS - PHASE 2

SYM.	NOTES	SIZE/TYPE	REMOVE Y/N
1	(1) HONEYLOCUST TREE TO BE REMOVED FOR DEVELOPMENT	24" DEC	Y
2	REMOVE STANDING DEAD TREE	6" DEC	Y
3	-	-	-
4	REMOVE STANDING DEAD TREE AND ADJACENT LARGE STUMP	12" EVERGREEN	Y
5	(3) NORWAY MAPLES TO BE REMOVED	12", 16", 16" DEC	Y
6	TREE TO BE REMOVED FOR DEVELOPMENT	11" DEC	Y
7	TREE TO BE REMOVED FOR DEVELOPMENT	11" DEC	Y
8	TREE TO BE REMOVED FOR DEVELOPMENT	4" DEC	Y
9	EVERGREEN (1) AND SHRUBS (2) TO BE REMOVED FOR DEVELOPMENT	10" EVERGREEN	Y
10	TREE TO BE REMOVED FOR DEVELOPMENT	15" EVERGREEN	Y
11	TREE TO BE REMOVED FOR DEVELOPMENT	3", 9", 14" CON	Y
12	TREE TO BE REMOVED FOR DEVELOPMENT	8", 12" DEC	Y
13	(9) OAKS TO BE REMOVED FOR DEVELOPMENT	12-28" DEC	Y
14	YEW TO BE REMOVED - CEDARS (TO REMAIN) PRUNE LOWER BRANCHES	-	Y
15	(1) OAK TO BE REMOVED FOR DEVELOPMENT	18" DEC	Y
16	(2) OAKS TO BE REMOVED FOR DEVELOPMENT	10" + 15" DEC	Y
17	(1) OAK TREE TO BE REMOVED FOR DEVELOPMENT	15" DEC	Y
18	(1) MAPLE TREE TO BE REMOVED FOR DEVELOPMENT	10" DEC	Y
19	SHRUBS TO BE REMOVED FOR DEVELOPMENT	LOW EVERGREENS	Y
20	(4) OAKS TO BE REMOVED FOR DEVELOPMENT	12", 18", 20", 36" DEC	Y
21	(2) YEW SHRUBS TO BE REMOVED FOR DEVELOPMENT	(2) 3' WIDTH	Y
22	PRIVET SHRUBS ALONG PATH AND YEW SHRUBS UNDER CEDARS TO BE REMOVED FOR DEVELOPMENT	4' HT DEC	Y
23	PRIVET SHRUBS TO BE REMOVED FOR DEVELOPMENT	4' HT DEC	Y
24	(6) YEW SHRUBS TO BE REMOVED + (2) PINE + UNDERGROWTH TO BE REMOVED FROM BELOW CEDARS + ADJACENT AREA	V.I.F.	Y
25	(1) OAK + (1) MAPLE TREE - PRUNE LOWER BRANCHES FOR DEVELOPMENT	12" + 16" DEC.	N

LEGEND:

- (EXISTING)
- PROPERTY LINE
 - DECIDUOUS TREE (preserved)
 - EVERGREEN TREE (preserved)
 - SHRUBS (preserved)
 - - - EDGE OF PAVING
 - BUILDING OUTLINE
 - ☼ POLE LIGHT
 - ⊕ FIRE HYDRANT
 - ⊙ DRAIN MH
 - ⊙ SEWER MH
 - ⊙ UTILITY POLE
 - ⊙ SIGN
 - CATCH BASIN
 - CHAIN LINK FENCE
 - x— WROUGHT IRON FENCE

NOTES:

1. ALL TREES TO BE PRESERVED SHALL BE PROTECTED WITHIN APPROVED FENCING OR BARRIERS AT THE EXISTING DRIPLINE, SEE DETAIL 1, SHEET L2.0
2. NO EQUIPMENT OR MATERIALS SHALL BE PLACED OR STORED WITHIN THE PROTECTED DRIPLINE AREA OF PRESERVED TREES
3. ALL TREES TO BE PRESERVED SHALL BE MONITORED ON A REGULAR BASIS FOR SIGNS OF STRESS OR OTHER IMPACT DUE TO CONSTRUCTION AND APPROPRIATE TREE CARE SHALL BE INITIATED IMMEDIATELY.
4. OWNER SHALL RETAIN A LICENSED ARBORIST TO PREPARE A TREE CARE PROGRAM FOR ALL PRESERVED TREES TO INCLUDE PRE, DURING AND POST CONSTRUCTION MANAGEMENT.
5. TREE MANAGEMENT SHALL CONSIST OF SELECT PRUNING, WATERING, FERTILIZATION, AND AERATION AS REQUIRED AND SPECIFIED TO EACH TREE SPECIES.
6. THE CONTRACTOR IS ADVISED THAT ANY UNFORESEEN SUBSURFACE CONDITIONS ENCOUNTERED DURING THE COURSE OF WORK SHALL BE REPORTED TO THE OWNER'S REPRESENTATIVE IMMEDIATELY AND ANY UNAUTHORIZED REMOVALS SHALL BE DONE SO AT NO EXTRA EXPENSE TO THE OWNER.

LEGEND:

- (TREE REMOVAL)
- ⊗ TREE TO BE REMOVED
 - ⊗⊗⊗ GROUP OF TREES TO BE REMOVED
 - ⊗ SHRUB TO BE REMOVED
 - ⊗ TREE TO BE PRUNED OR RELOCATED
 - TREES TO BE PRESERVED

