

### TREE REMOVAL ANALYSIS

SYM	NOTES	SIZE / TYPE	REMOVE Y / N
1	SCRAPPY HONEYSUCKLE - MAY WANT TO REMOVE	8" DEC	Y
2	PRUNE	4" V	N
3	DEAD SHRUB W/ INVASIVES GROWING IN IT	5" DEC	Y
4	SPRUCE IN BAD SHAPE	10" CON	Y
6	SHRUB IN POOR CONDITION W/ INVASIVES GROWING IN IT	5" DEC	Y
7	SHRUBS TO BE REMOVED	DEC	Y
8	OAK TREE TO BE REMOVED FOR DEVELOPMENT	28" DEC	Y
9	SPRUCE TO BE REMOVED AND RELOCATED	3" CON	Y
10	(3) OAK TO BE REMOVED FOR DEVELOPMENT	18", 18", 12" DEC	Y
11	HEMLOCK TO BE REMOVED FOR DEVELOPMENT	10"	Y
12	(8) EVERGREEN TREES TO BE REMOVED (1 PINE, 7 CEDAR)	(1) 20", (7) 7"	Y
14	MAPLE IN POOR SHAPE TO BE REMOVED FOR DEVELOPMENT	24" DEC	Y
15	NORWAY MAPLE W/ SOME TRUNK ROT TO BE REMOVED FOR DEVELOPMENT	15" DEC	Y
16	NORWAY MAPLE TO BE REMOVED	24" DEC	Y
17	6 SHRUBS TO BE REMOVED ( 5 YEWS, 1 LILAC)	5" HT +/-	Y
18	CRABAPPLE TO BE REMOVED	5" DEC	Y
19	LILAC SHRUB TO BE REMOVED	5" HT +/-	Y
20	PURPLE NORWAY MAPLE	26" DEC	Y
21	(19 SHRUBS) REMOVE ALL FOUNDATION PLANTING SHRUBS, MOSTLY YEWS	3-4" HT	Y
22	5 DECIDUOUS OAK TREES TO BE REMOVED	12", 12", 12", 20", 14"	Y

APPLICANT:

MOTHERHOUSE ASSOCIATES LP  
100 COMMERCIAL STREET  
SUITE 414  
PORTLAND, ME 04101  
207.772.7673

## MOTHERHOUSE SENIOR HOUSING

Project:

Description:

Date:

Revisions:

Scale: 1" = 50'

Approved By: P.C.

Approved By: E.K.

Phase:

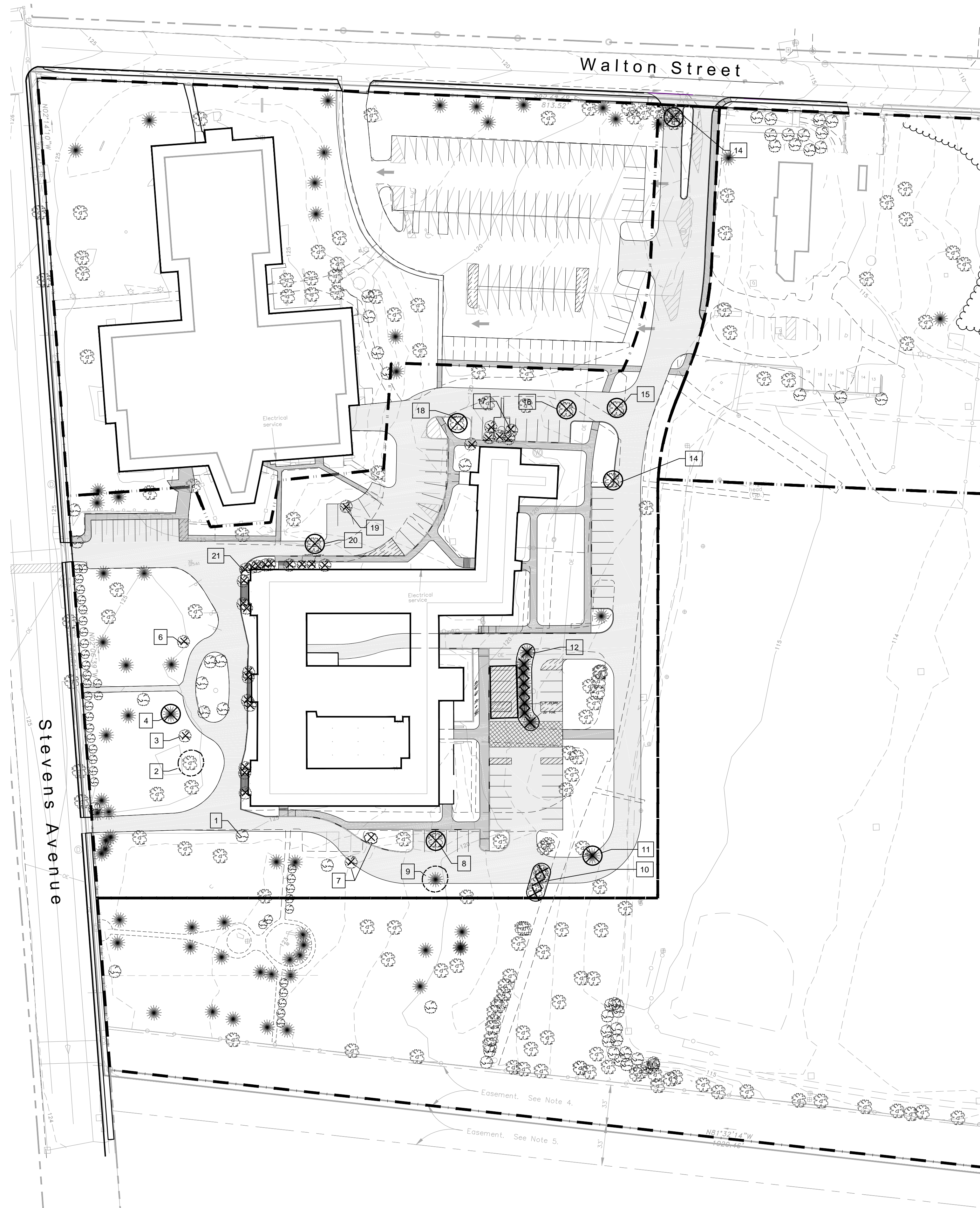
PERMITTING

DATE:

JUNE 24, 2015

SHEET NO:

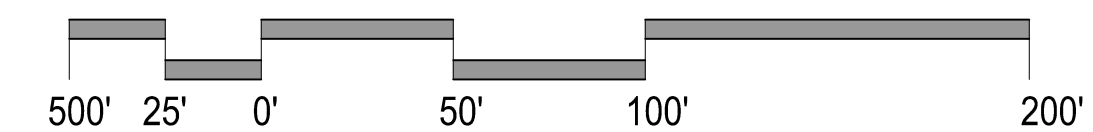
L1.0



### LEGEND:

(EXISTING)	(PROPOSED)	(TREE REMOVAL)
PROPERTY LINE	PROPERTY LINE	TREE TO BE REMOVED
DECIDUOUS TREE	ZONE BOUNDARY	GROUP OF TREES TO BE REMOVED
EVERGREEN TREE	DECIDUOUS TREE	SHRUB TO BE REMOVED
SHRUBS	EVERGREEN TREE	TREE TO BE PRUNED OR RELOCATED
EDGE OF PAVING	SHRUBS	
BUILDING OUTLINE	BIT CONC (ROADWAY)	
POLE LIGHT	BIT CONC (SIDEWALK)	
FIRE HYDRANT	SPECIAL PAVING	
DRAIN MH	RAINGARDEN	
SEWER MH	GROUNDCOVER	
UTILITY POLE	EDGE OF PAVING	
SIGN	CURB	
CATCH BASIN	CROSSWALK STRIPING	
CAST IRON FENCE	POLE LIGHT	
CHAIN LINK FENCE	TRAFFIC SIGNAGE	

SCALE: 1" = 50'



CARROLL ASSOCIATES  
LANDSCAPE ARCHITECTS  
217 COMMERCIAL STREET, STE 200  
PORTLAND, MAINE 04101  
207.772.1552 V. F. 207.772.0712