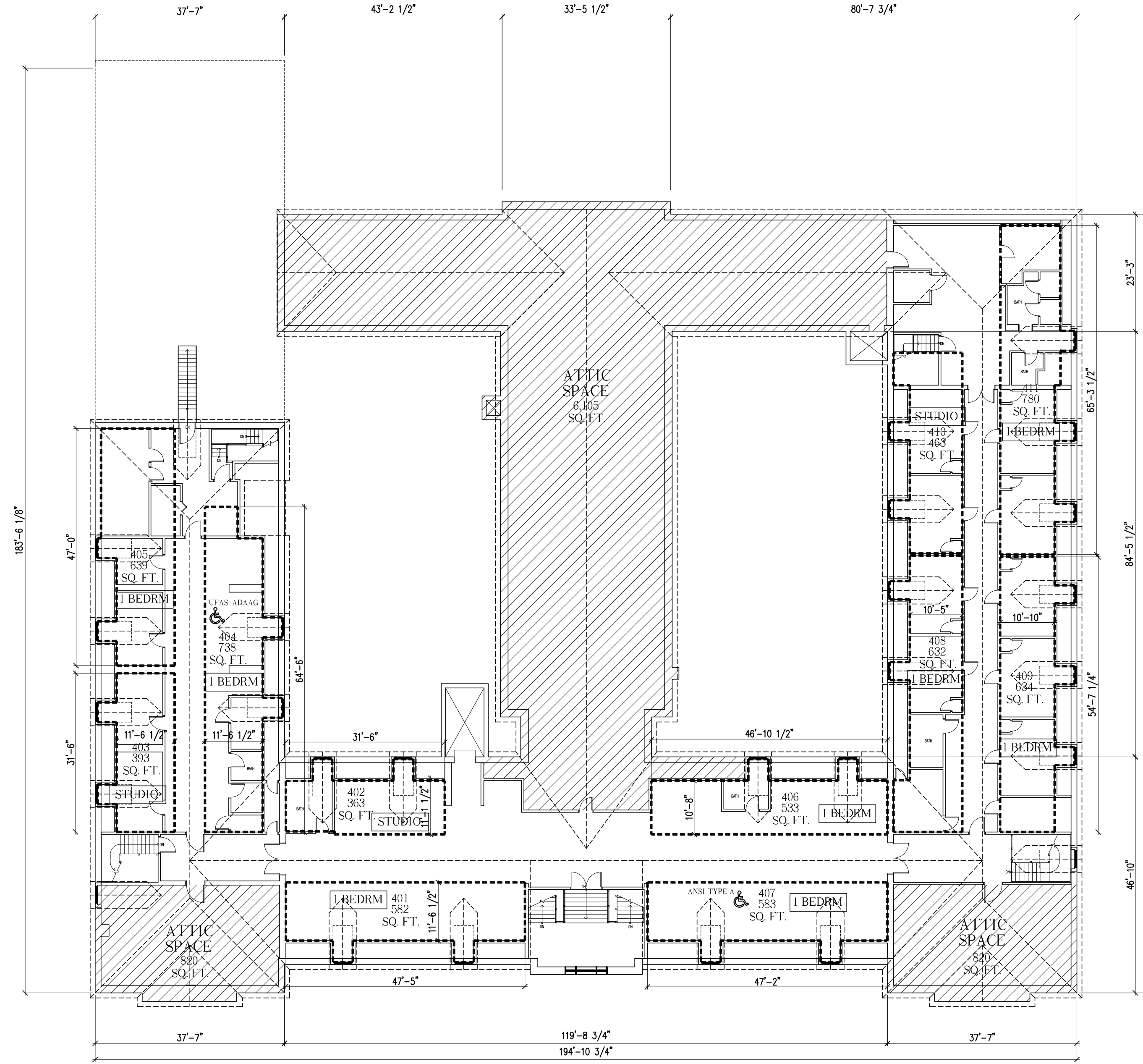


1 BEDRM  
STUDIO



**FOURTH FLOOR PLAN**  
 11 UNITS  
 3 STUDIO UNITS, 8 1 BEDROOM UNITS  
 GROSS AREA (INCL. ATTIC) = 21, 018 SQ. FT  
 GROSS AREA (NOT INCL. ATTIC) = 13, 273 SQ. FT  
 APARTMENTS NET AREA = 6,340 SQ. FT

Date: 23 June 2015

Scale: 1/16" = 1'-0"

FOURTH FLOOR PLAN

Revisions:

Project:

MOTHERHOUSE SENIOR HOUSING  
 PORTLAND, MAINE

Architect:

**ARCHETYPE** architects  
 48 Union Wharf Portland, Maine 04101  
 (207) 772-6022 Fax (207) 772-4056

Consulting Engineer:

Owner:

Developer:

A1.05