

Prepared For:
**MOTHERHOUSE
LLC**
Portland, ME 04103

Consulting Engineer:
MECHANICAL SYSTEMS ENGINEERS
ROYAL RIVER CENTER, UNIT 108
10 FOREST FALLS (201) 842-4411, MAINE 04068
FACEBOOK: MECHANICAL SYSTEMS ENGINEERS
© COPYRIGHT 2016

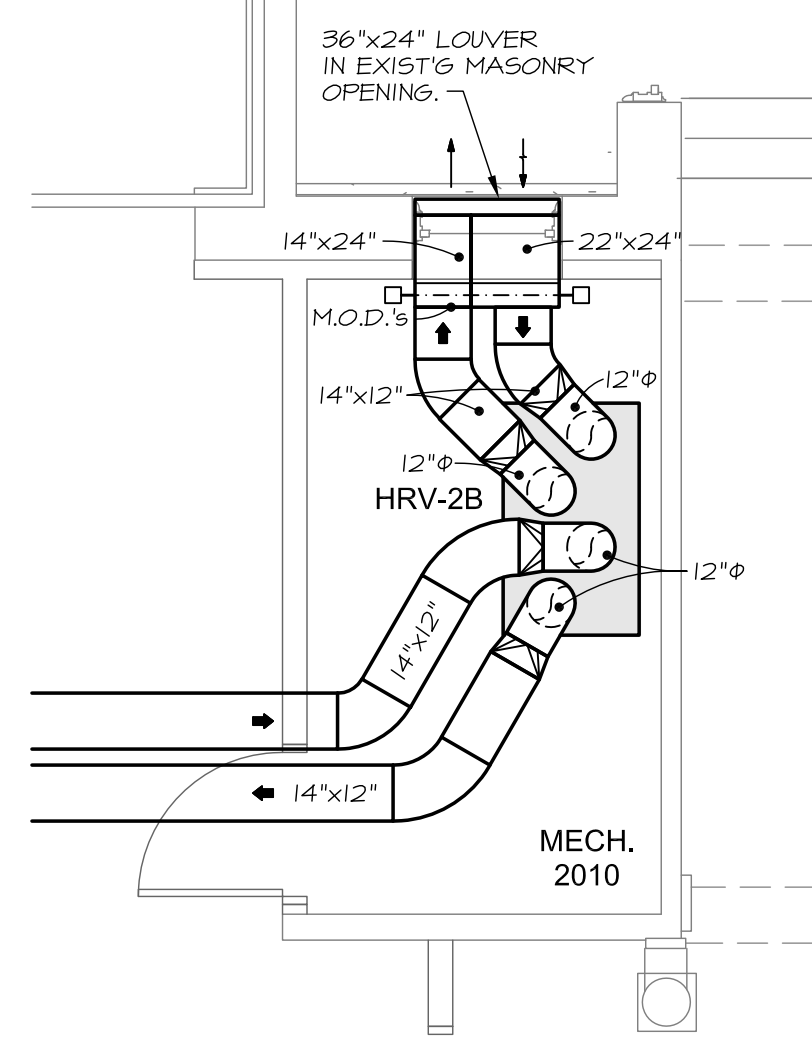
Architect:
**ARCHETYPE
architects**
48 Union Wharf Portland, Maine 04101
(207) 773-6022 ARCHETYPE@ARCHETYPEPA.COM

Project:
**MOTHERHOUSE
SENIOR HOUSING**
PORTLAND, MAINE

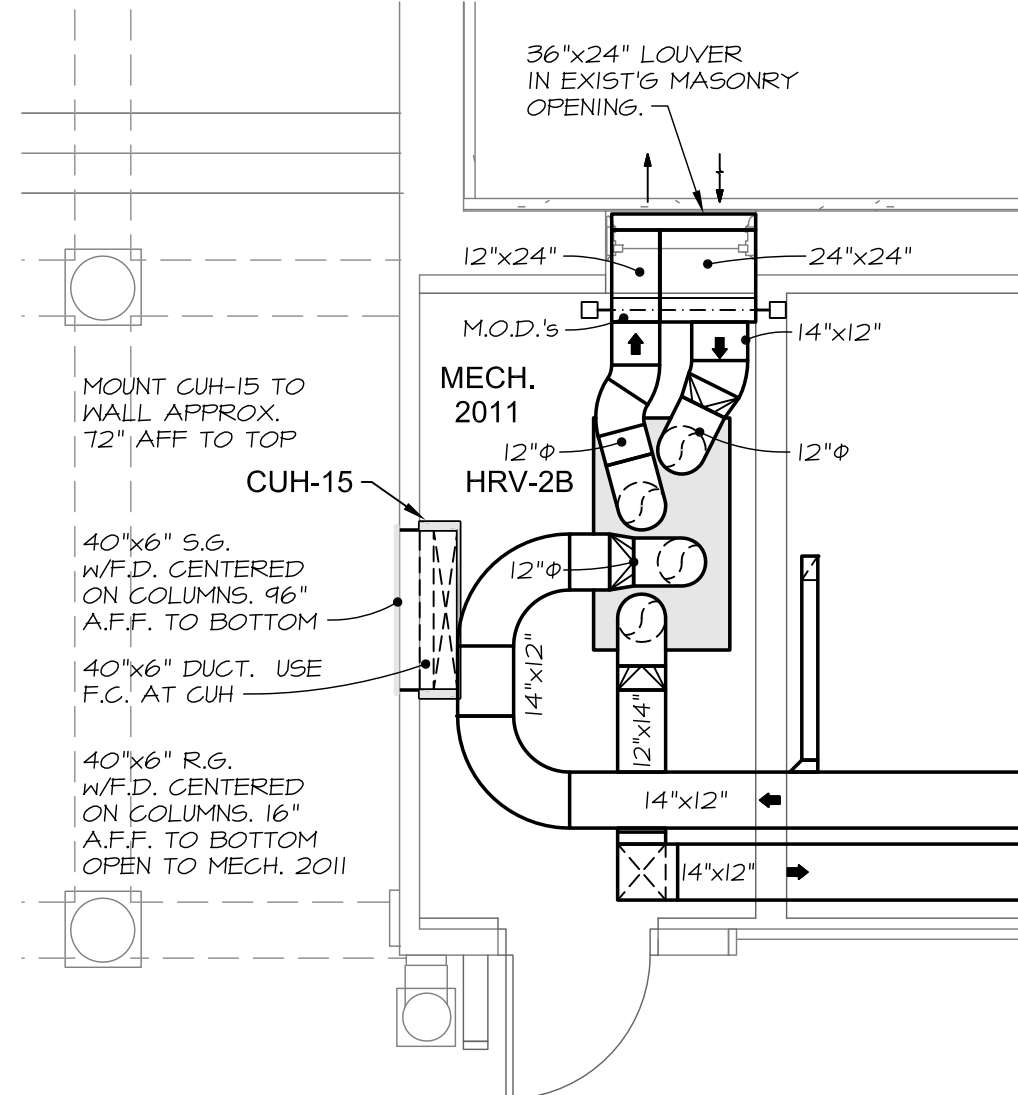
Revisions:
Permit Set: 15 February 2016

Date:
15 FEB. 2016
Scale:
3/32" = 1'-0"
**SECOND FLOOR
MECHANICAL
DUCTWORK**

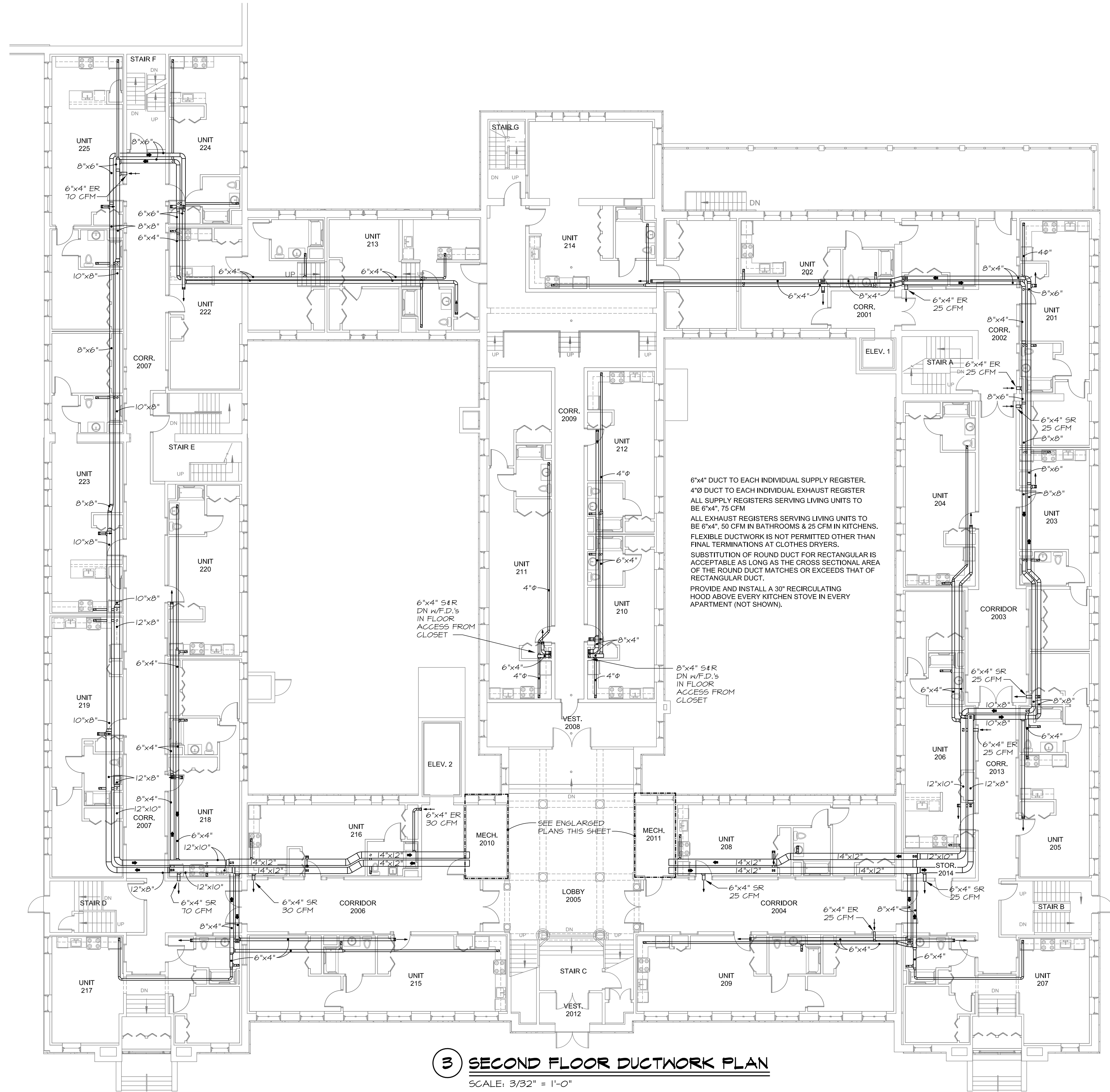
M7
MSE PROJECT 1530



**1 ENLARGED PLAN
MECHANICAL 2010**
SCALE: 1/4" = 1'-0"



**2 ENLARGED PLAN
MECHANICAL 2011**
SCALE: 1/4" = 1'-0"



3 SECOND FLOOR DUCTWORK PLAN
SCALE: 3/32" = 1'-0"

