

Prepared For:
**MOTHERHOUSE
 LLC**
 Portland, ME 04103

Consulting Engineer:

MECHANICAL SYSTEMS ENGINEERS
 ROYAL RIVER CENTER, UNIT 108
 10 FOREST FALLS (201) 846-2441, MAINE 04068
 FACEBOOK: MECHANICAL SYSTEMS ENGINEERS
 © COPYRIGHT 2016

Architect:

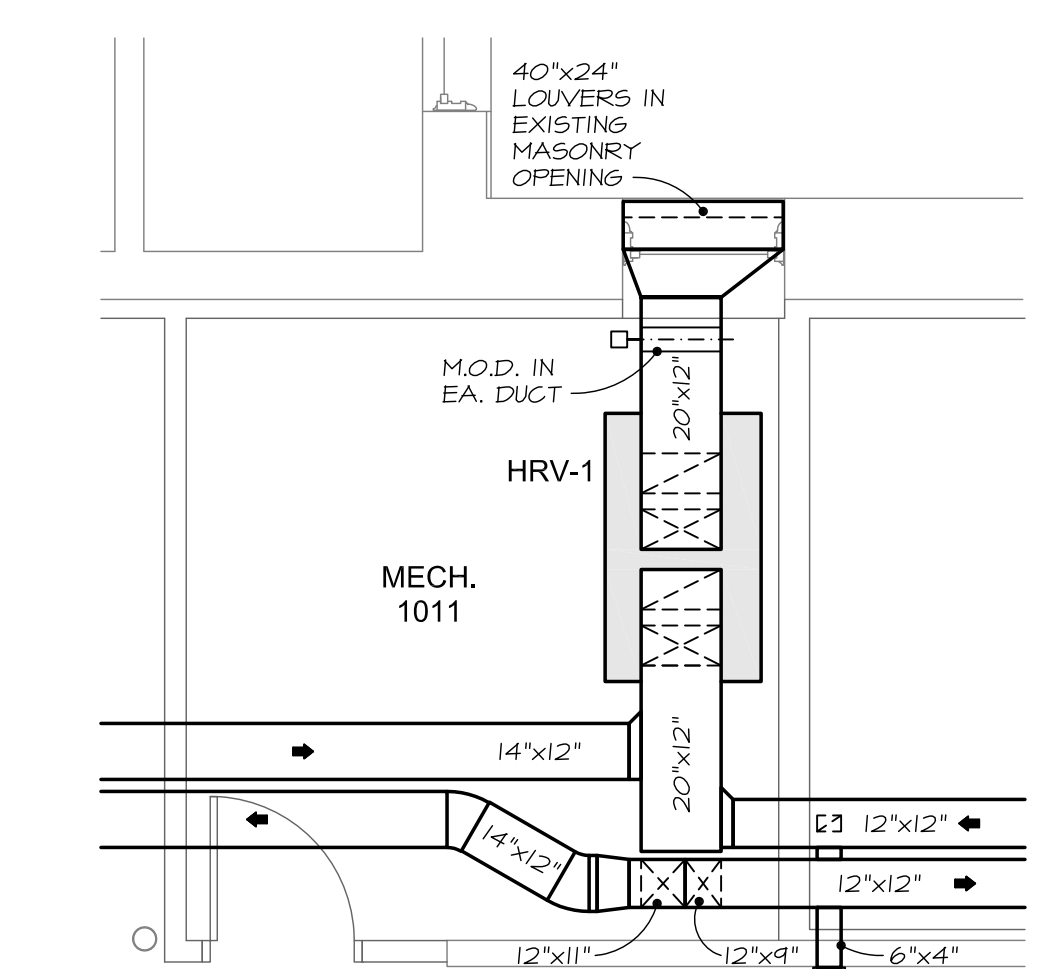
**ARCHETYPE
 architects**
 48 Union Wharf Portland, Maine 04101
 (207) 773-6022 ARCHETYPE@ARCHETYPEDA.COM
 © COPYRIGHT 2016

Project:
**MOTHERHOUSE
 SENIOR HOUSING**
 PORTLAND, MAINE

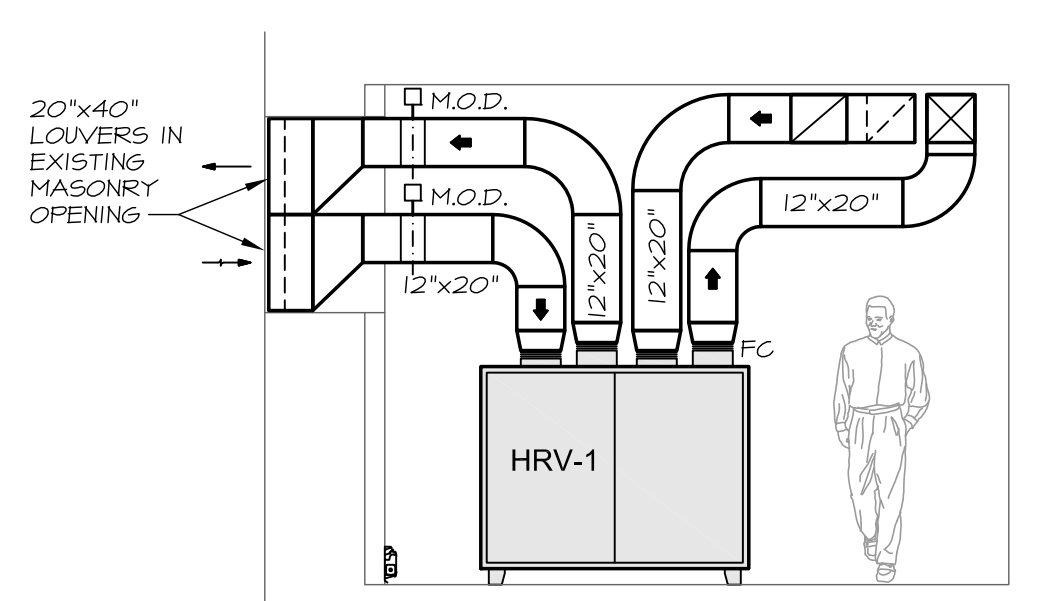
Revisions:
 Permit Set: 15 February 2016

Date:
 15 FEB. 2016
 Scale:
 3/32" = 1'-0"
**FIRST FLOOR
 MECHANICAL
 DUCTWORK**

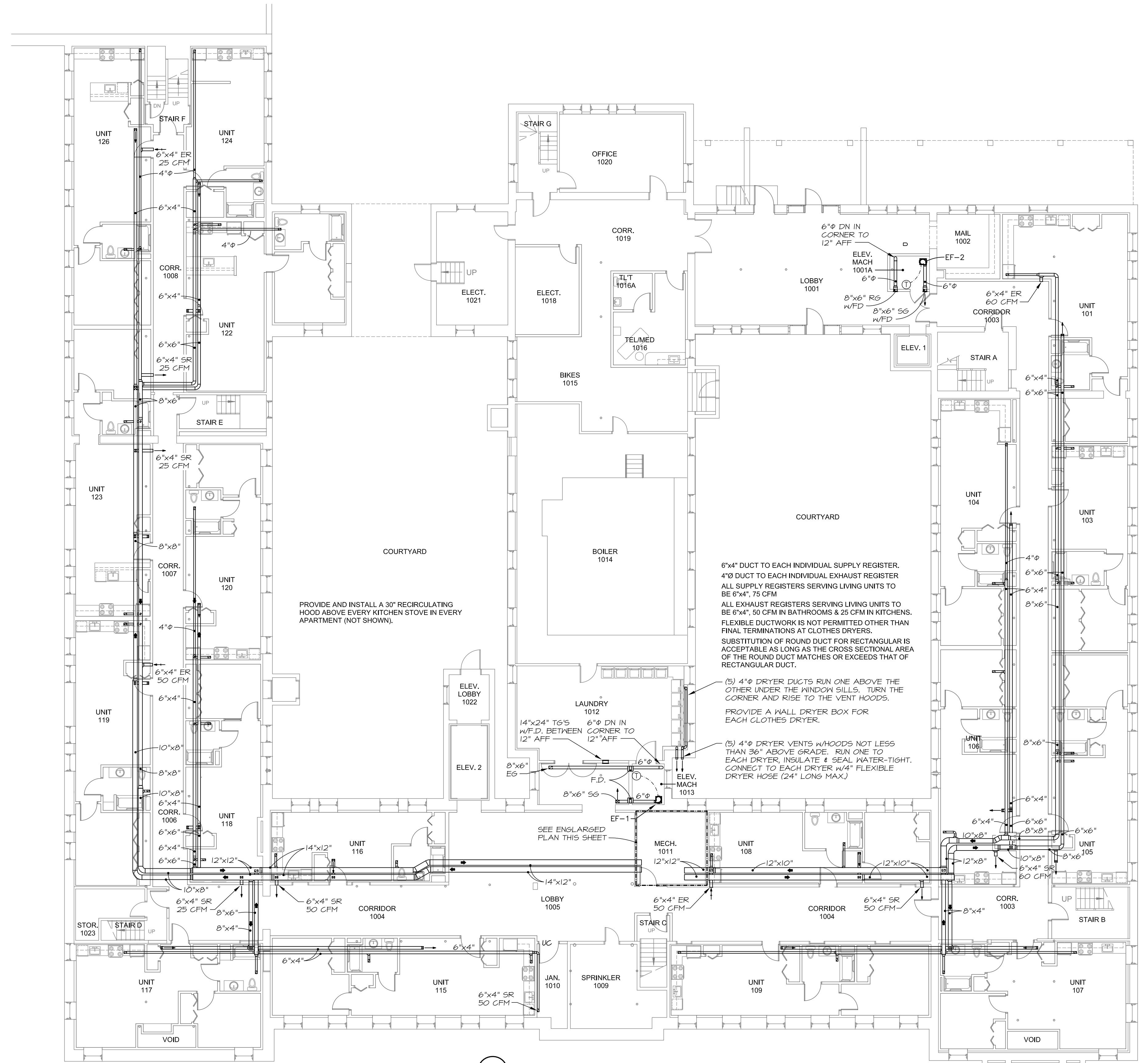
M6
 MSE PROJECT 1530



**1 ENLARGED PLAN
 MECHANICAL 1011**
 SCALE: 1/4" = 1'-0"



2 SECTION AT HRV-1
 SCALE: 1/4" = 1'-0"



3 FIRST FLOOR DUCTWORK PLAN
 SCALE: 3/32" = 1'-0"

