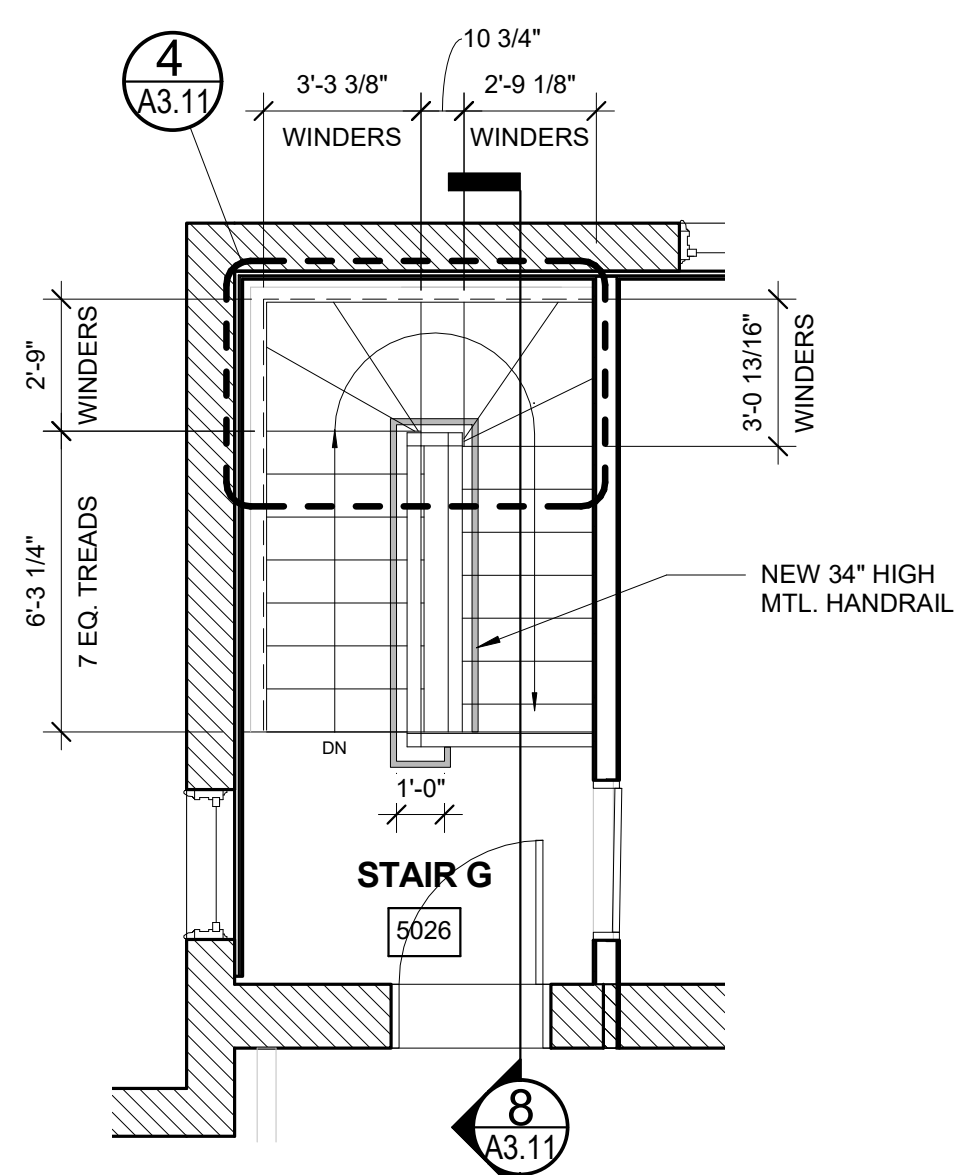
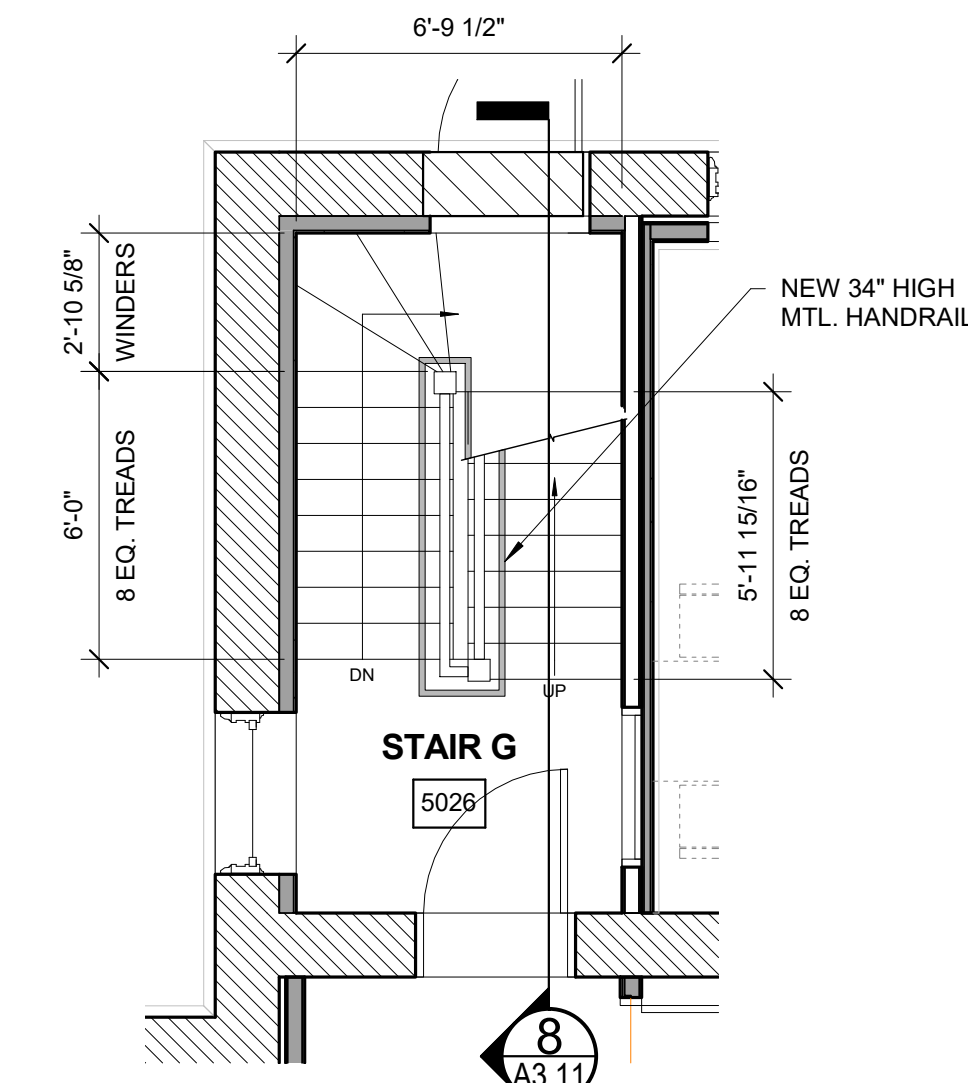


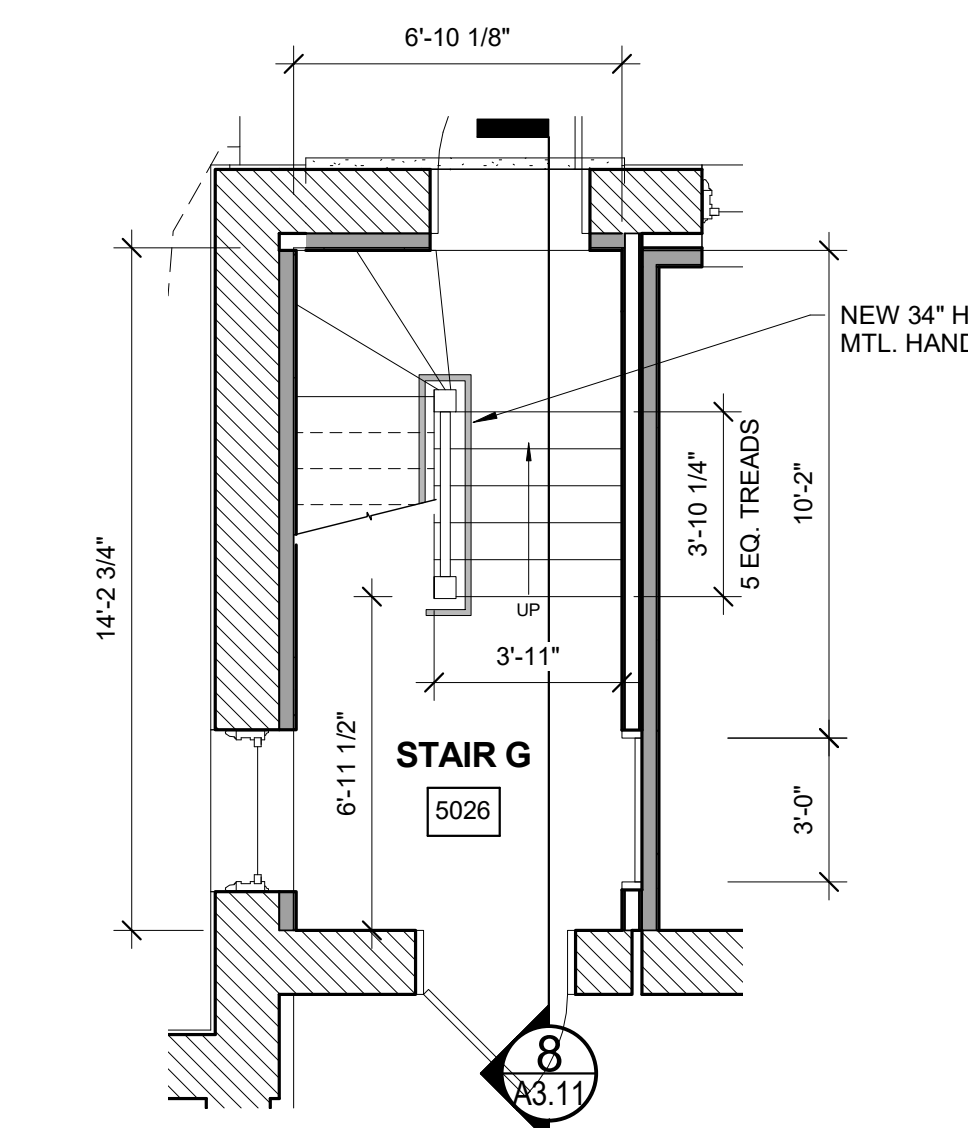
REVISED FOR
CODE REVIEW



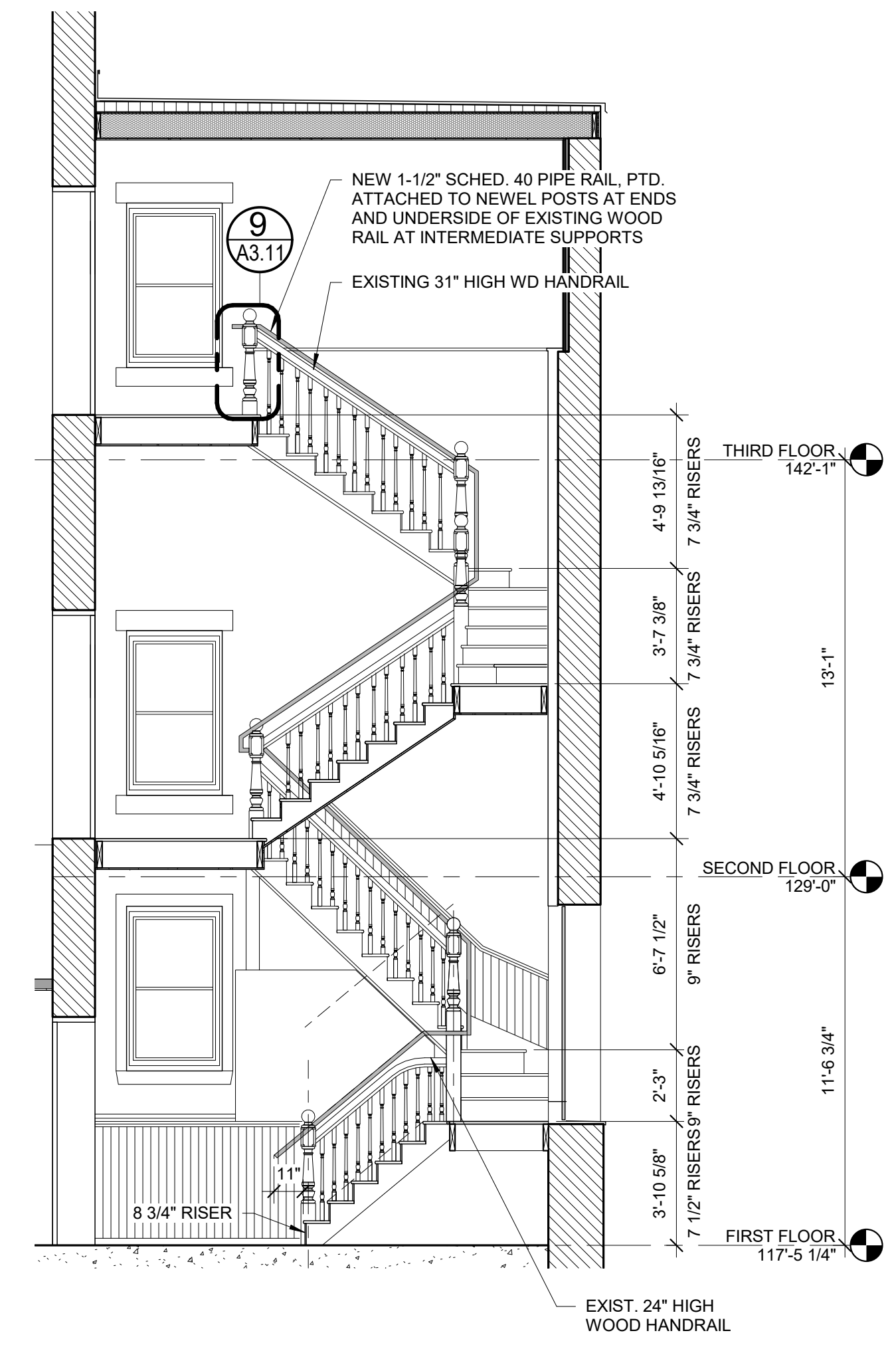
7 | EXISTING STAIR G AT THIRD FLOOR
1/4" = 1'-0"



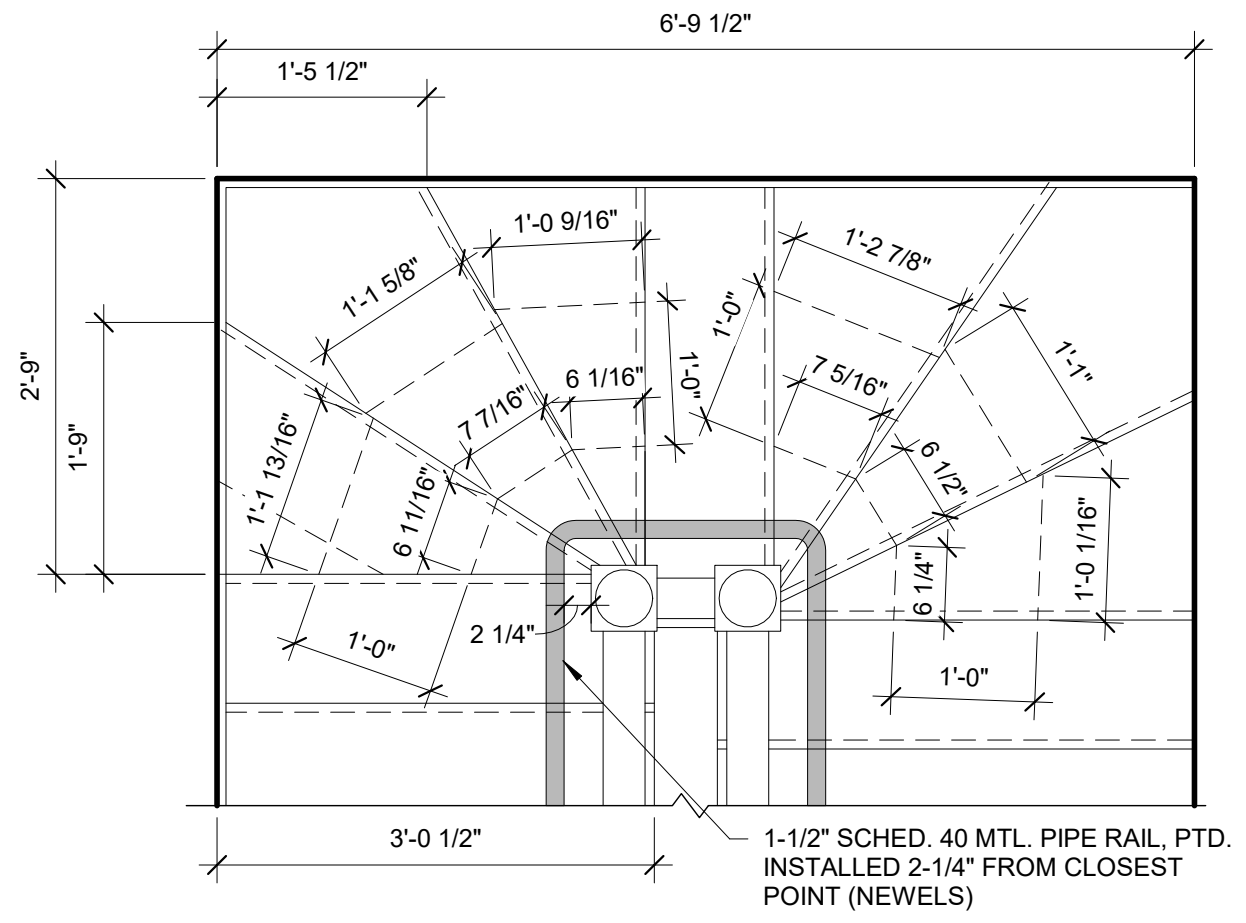
6 | EXISTING STAIR G AT SECOND FLOOR
1/4" = 1'-0"



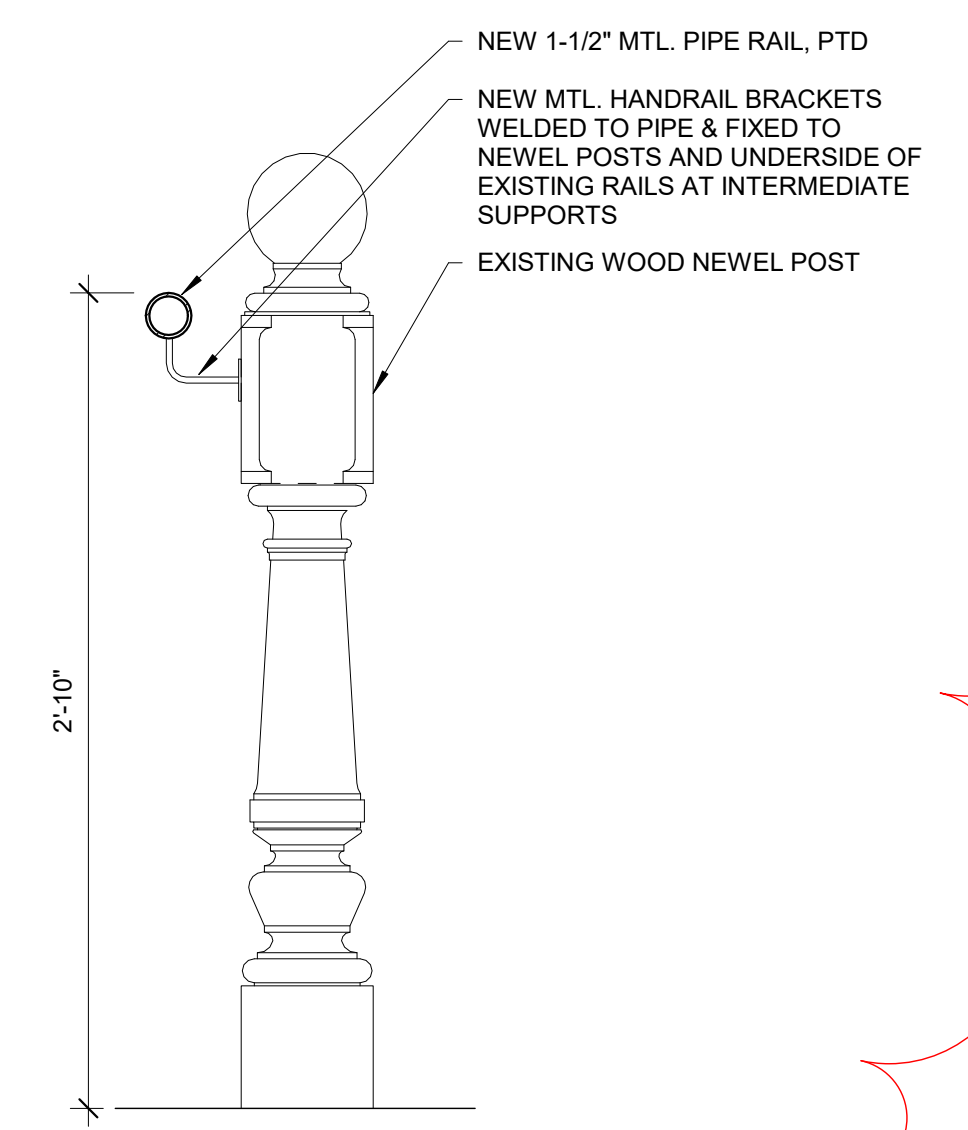
5 | EXISTING STAIR G AT FIRST FLOOR
1/4" = 1'-0"



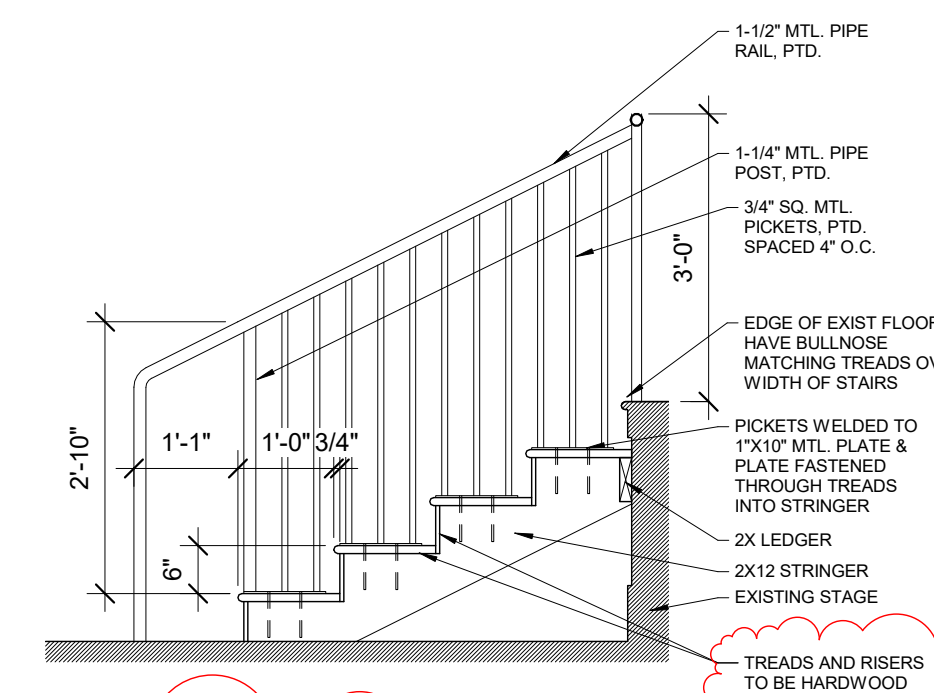
8 | SECTION AT STAIR G
1/4" = 1'-0"



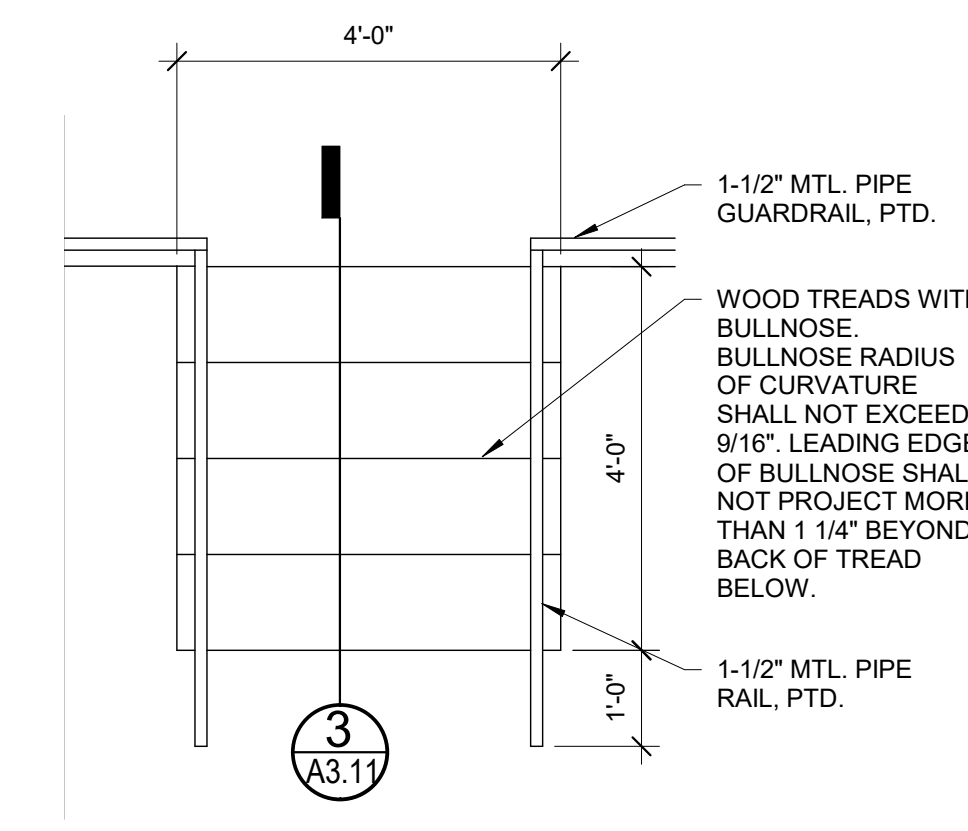
4 | STAIR G PLAN DETAIL
3/4" = 1'-0"



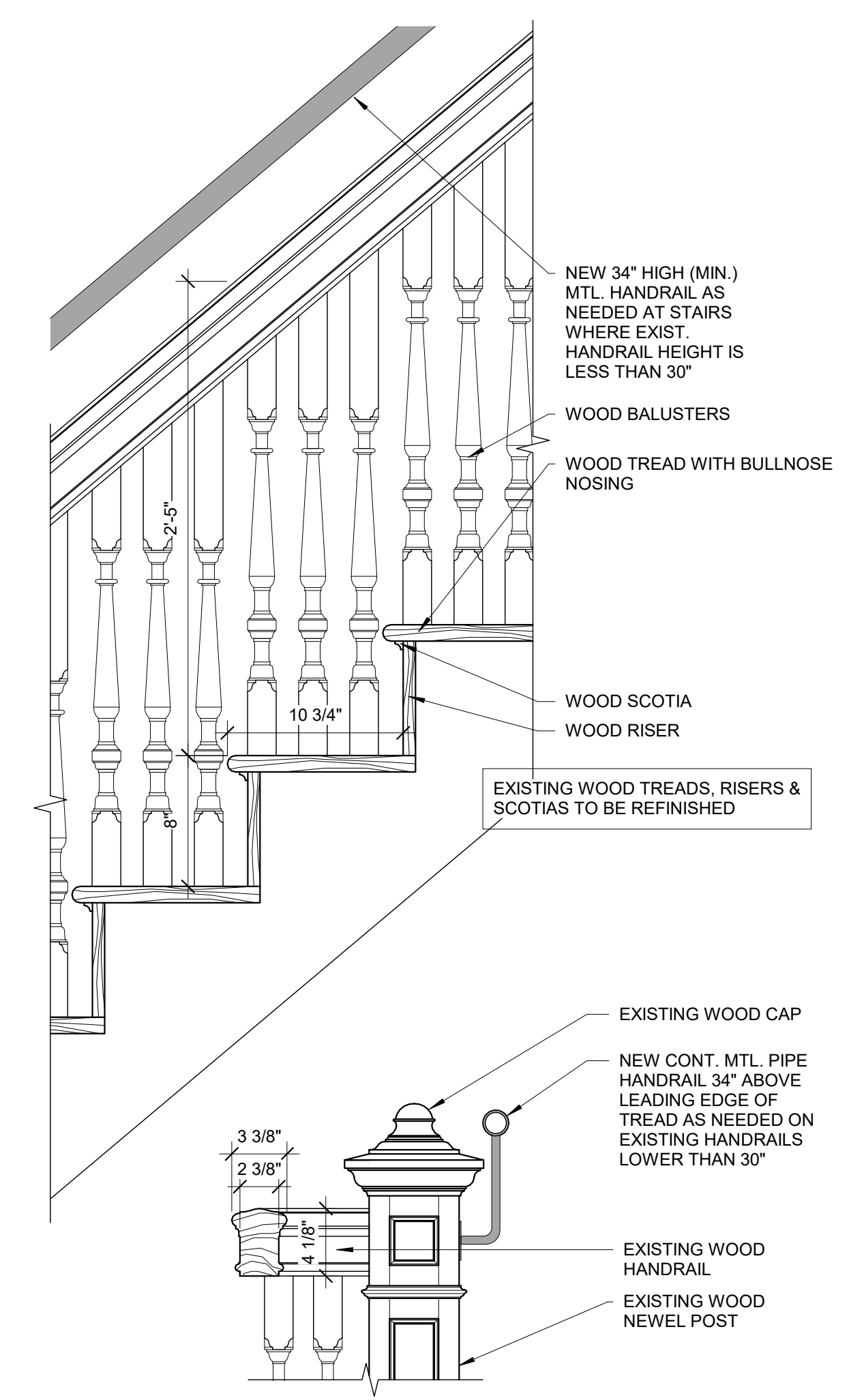
9 | STAIR G HANDRAIL DETAIL
1 1/2" = 1'-0"



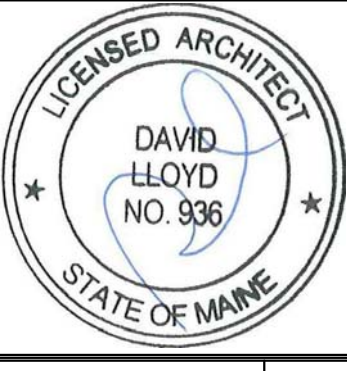
3 | CORRIDOR 2009 STAIR SECTION
1/2" = 1'-0"



2 | CORRIDOR 2009 STAIR PLAN
1/2" = 1'-0"



1 | EXISTING STAIR B & D DETAILS
1 1/2" = 1'-0"



Prepared For:
**MOTHERHOUSE
LLC**

Consultant:
**ARCHITYPE
architects**
48 Union Wharf Portland, Maine 04101
(207) 772-6022 ARCHITYPE@ARCHITYPEPA.COM

Project:
**MOTHERHOUSE
SENIOR HOUSING**
605 STEVENS AVENUE
PORTLAND, MAINE 04103

Revisions:
1 | 11/15/16 Revisions for City Permit Review

Date: 9 DEC 2016
Scale: As indicated
STAIR DETAILS

A3.11