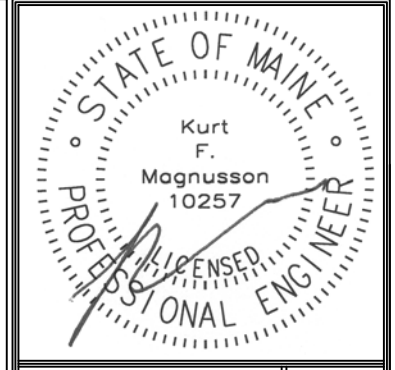
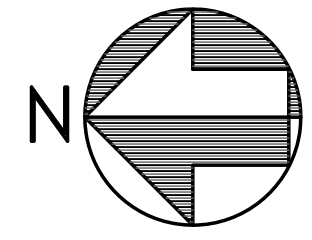


February 26, 2016 - 9:44 am  
\\VSEFST\Projects\1530 Motherhouse SA\Drawings\1530\_M6-M10.dwg



Prepared For:  
**MOTHERHOUSE  
LLC**  
Portland, ME 04103

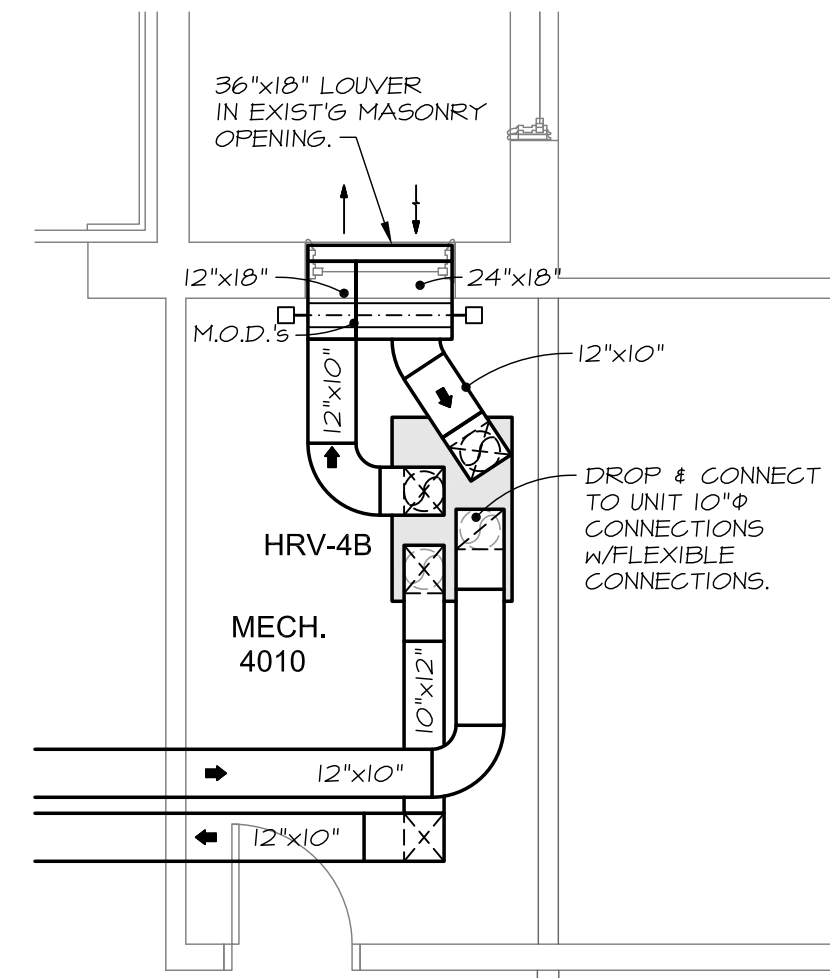
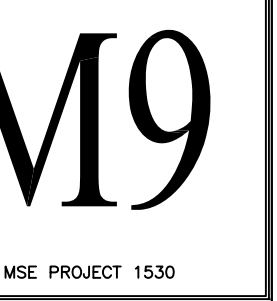
Consulting Engineer:  
**MECHANICAL SYSTEMS ENGINEERS**  
ROYAL RIVER CENTER, UNIT 108  
10 FOREST FALLS (201) 846-3441  
FACEBOOK: MECHANICAL SYSTEMS ENGINEERS  
© COPYRIGHT 2016

Architect:  
**ARCHETYPE  
architects**  
48 Union Wharf Portland, Maine 04101  
(207) 773-6022 ARCHETYPE@ARCHETYPEPA.COM

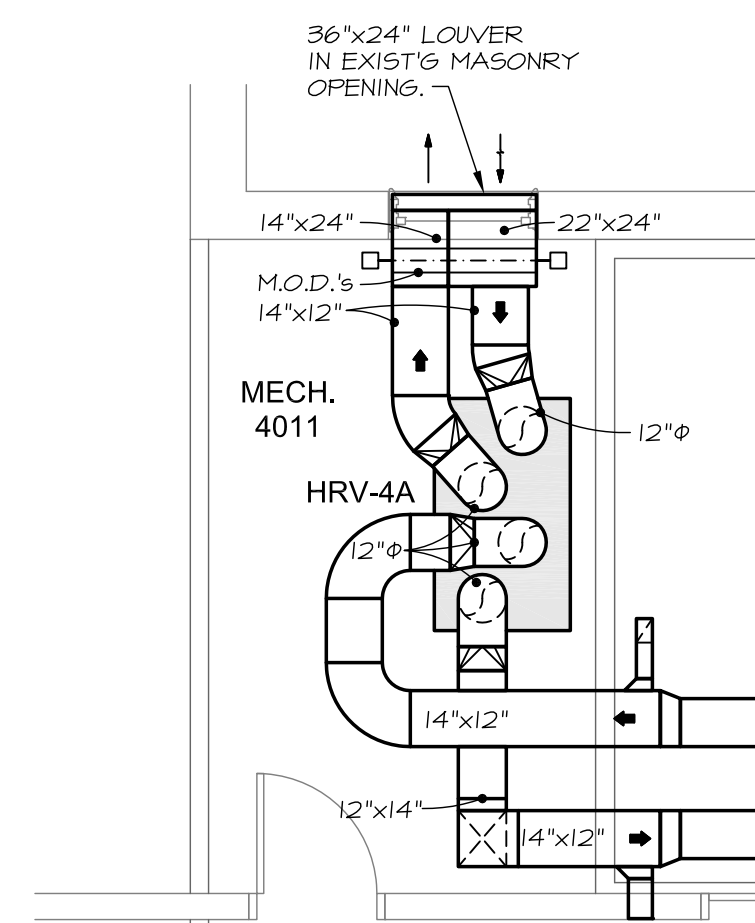
Project:  
**MOTHERHOUSE  
SENIOR HOUSING**  
PORTLAND, MAINE

Revisions:  
Permit Set: 15 February 2016

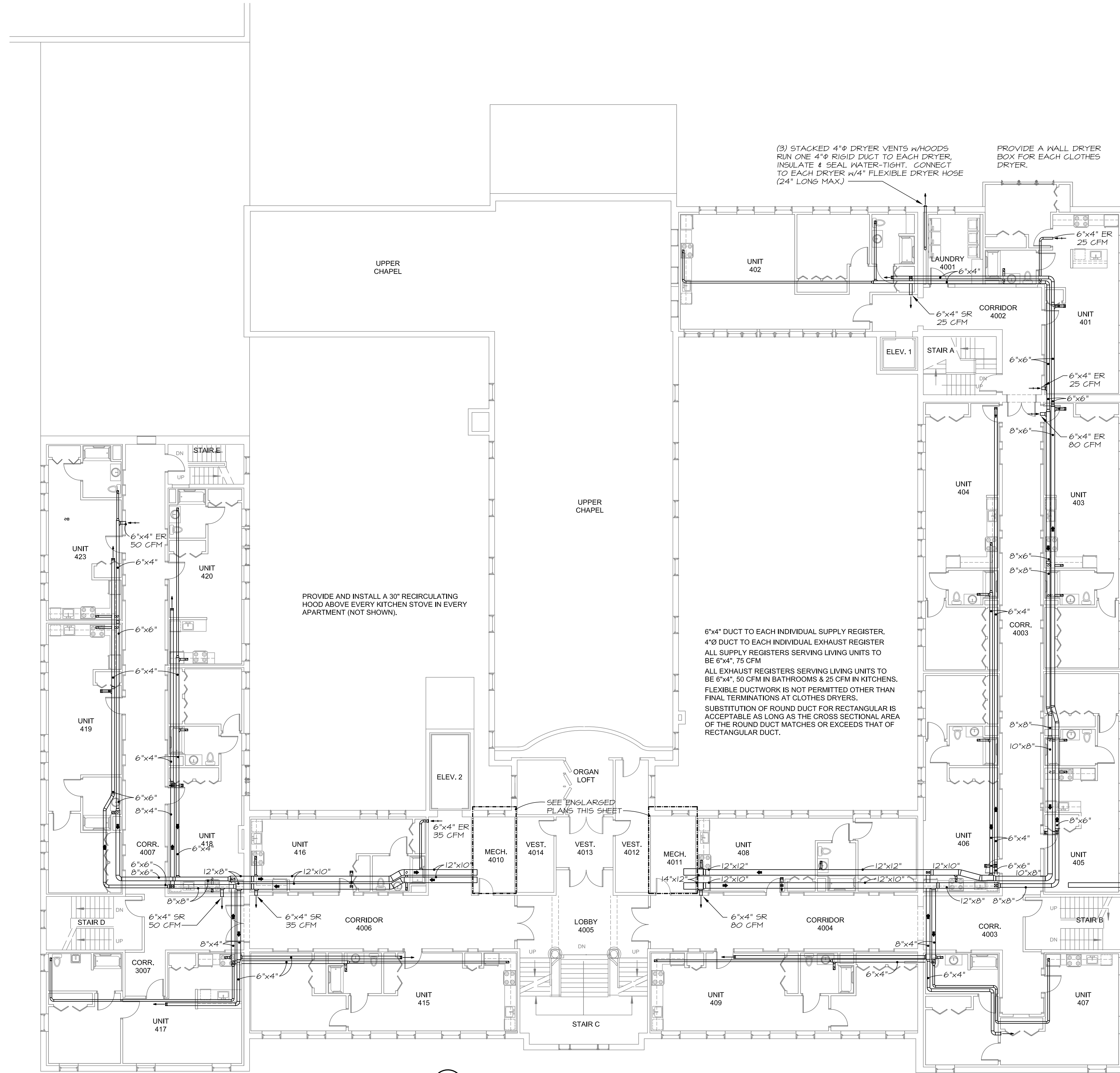
Date:  
15 FEB. 2016  
Scale:  
3/32" = 1'-0"  
**FOURTH FLOOR  
MECHANICAL  
DUCTWORK**



**1 ENLARGED PLAN  
MECHANICAL 4010**  
SCALE: 1/4" = 1'-0"



**2 ENLARGED PLAN  
MECHANICAL 4011**  
SCALE: 1/4" = 1'-0"



**3 FOURTH FLOOR DUCTWORK PLAN**  
SCALE: 3/32" = 1'-0"

