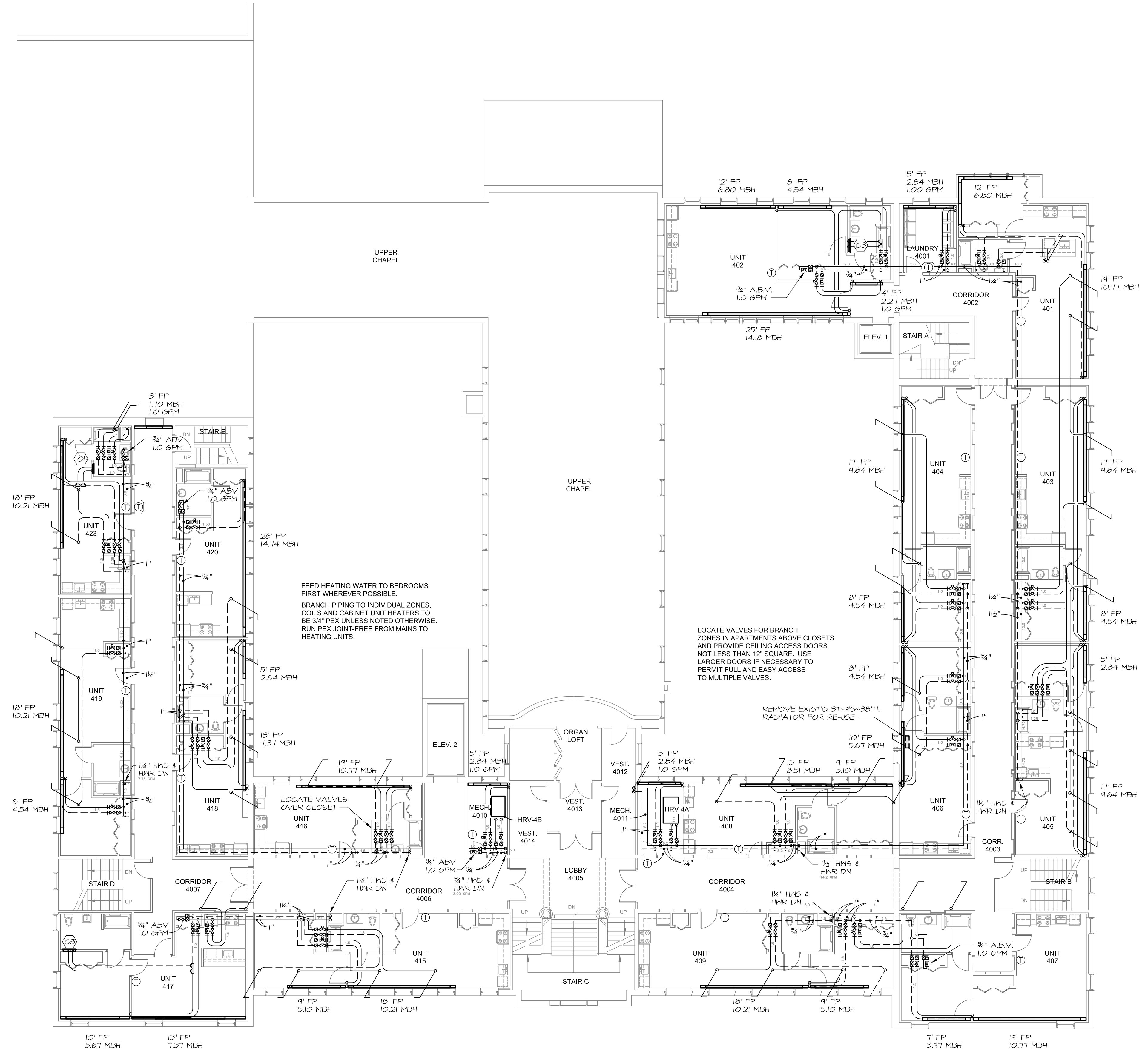


**I BRANCH PIPING**  
**CONNECTION AT MAINS**  
 NO SCALE

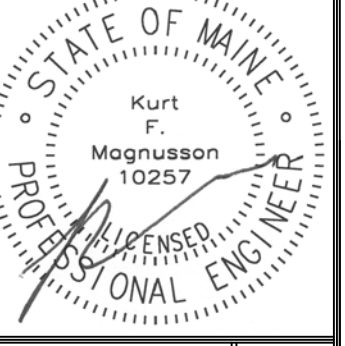
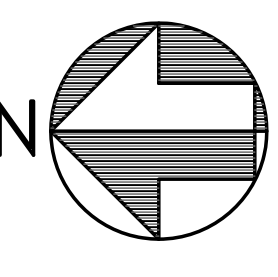
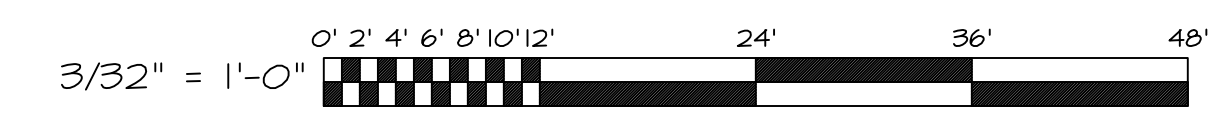
APARTMENT WATER FLOW		
UNIT	MBH	GPM
401	17.58	2.00
402	27.95	3.00
403	14.18	1.50
404	14.18	1.50
405	12.47	1.25
406	10.21	1.00
407	14.74	1.50
408	13.61	1.50
409	15.31	1.50
415	15.31	1.50
416	10.77	1.00
417	15.47	1.50
418	10.21	1.00
419	14.74	1.50
420	14.74	1.50
423	11.14	1.25



FEED HEATING WATER TO BEDROOMS FIRST WHEREVER POSSIBLE.  
 BRANCH PIPING TO INDIVIDUAL ZONES, COILS AND CABINET UNIT HEATERS TO BE 3/4" PEX UNLESS NOTED OTHERWISE.  
 RUN PEX JOINT-FREE FROM MAINS TO HEATING UNITS.

LOCATE VALVES FOR BRANCH ZONES IN APARTMENTS ABOVE CLOSETS AND PROVIDE CEILING ACCESS DOORS NOT LESS THAN 12" SQUARE. USE LARGER DOORS IF NECESSARY TO PERMIT FULL AND EASY ACCESS TO MULTIPLE VALVES.

REMOVE EXIST'G 3T-45-38" RADIATOR FOR RE-USE



Prepared For:  
**MOTHERHOUSE LLC**  
 Portland, ME 04103

Consulting Engineer:  
**MECHANICAL SYSTEMS ENGINEERS**  
 ROYAL RIVER CENTER, UNIT 10B  
 10 FOREST FALLS (201) 846-1441  
 FACEBOOK: MECHANICAL SYSTEMS ENGINEERS  
 © COPYRIGHT 2016

Architect:  
**ARCHETYPE architects**  
 48 Union Wharf Portland, Maine 04101  
 (207) 773-4022 ARCHETYPE@ARCHETYPEDA.COM

Project:  
**MOTHERHOUSE SENIOR HOUSING**  
 PORTLAND, MAINE

Revisions:  
 Permit Set: 15 February 2016

Date:  
 15 FEB. 2016  
 Scale:  
 3/32" = 1'-0"  
**FOURTH FLOOR MECHANICAL PIPING**

**M4**  
 MSE PROJECT 1530