

Prepared For:  
**MOTHERHOUSE  
LLC**

Consultant:

Architect:  
**ARCHETYPE  
architects**  
48 Union Wharf Portland, Maine 04101  
(207) 772-0022 ARCHETYPE@ARCHETYPEPA.COM

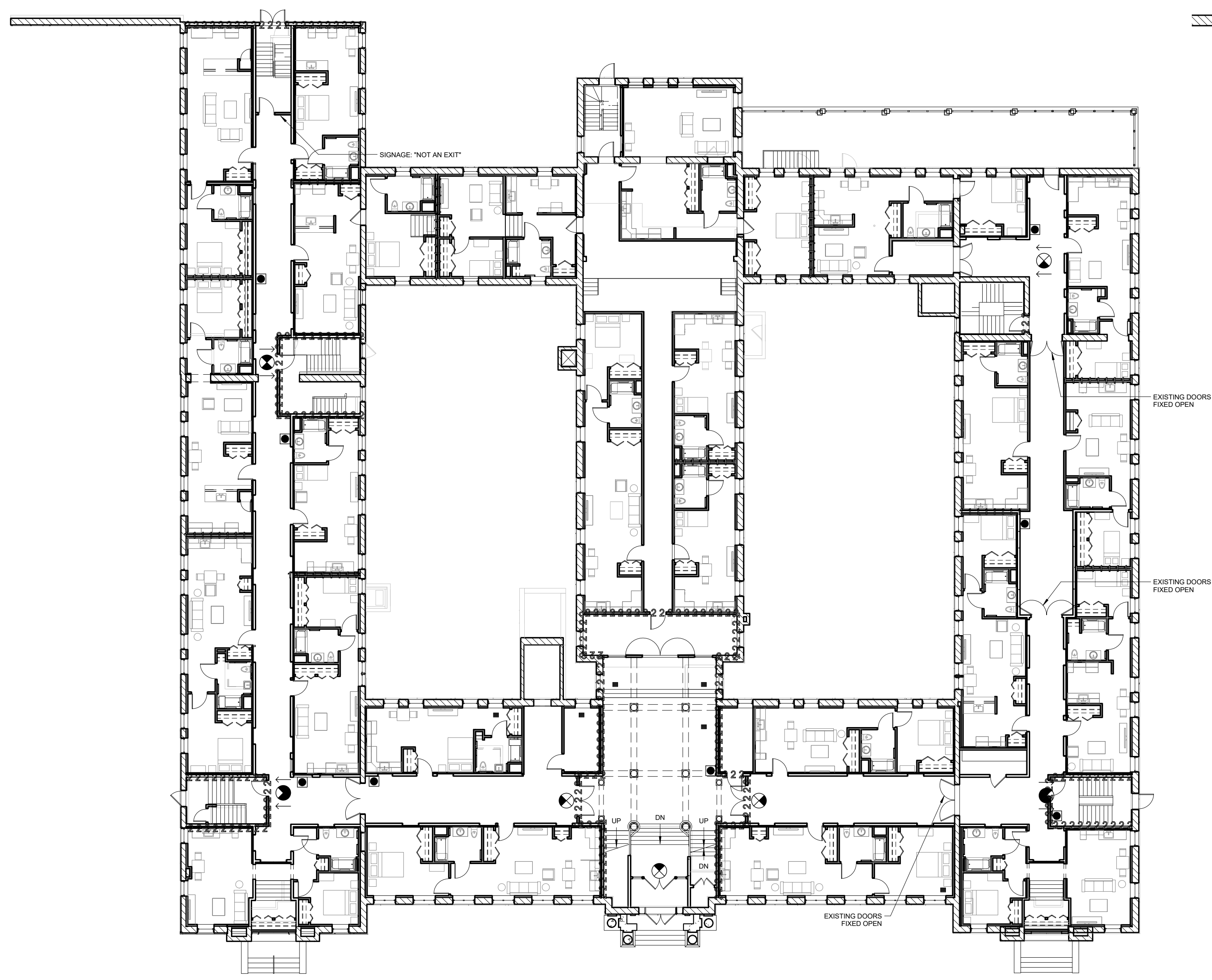
Project:  
**MOTHERHOUSE  
SENIOR HOUSING**  
605 STEVENS AVENUE  
PORTLAND, MAINE 04103

Revisions:

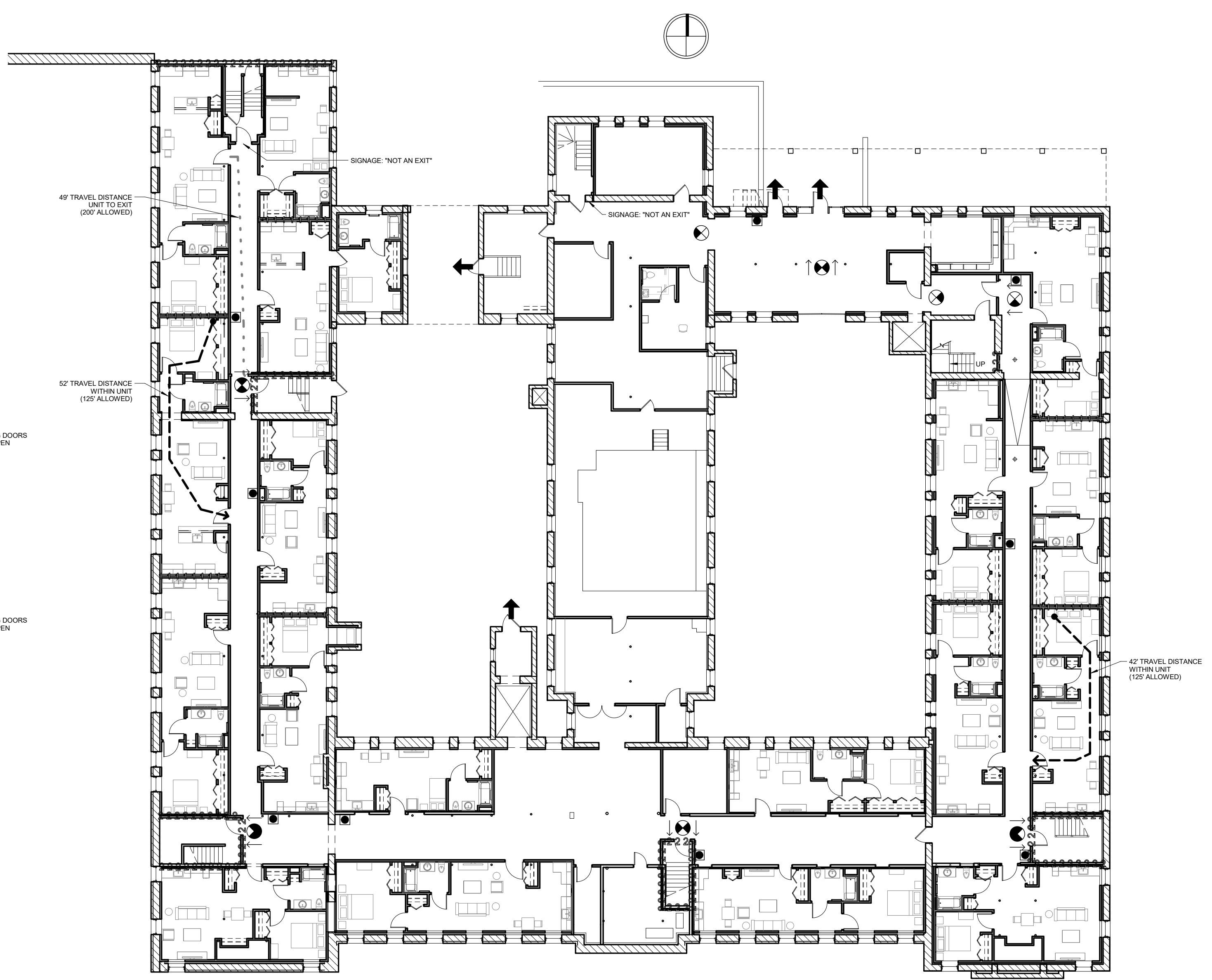
Date: 15 FEB 2016  
Scale: As indicated  
**LIFE SAFETY PLANS**

**LS1.1**

SMOKE ZONE	SZ#
NEW WALL - SMOKE PART.	▬▬▬▬
NEW WALL - 1 HOUR	▬▬▬▬
NEW WALL - 2 HOUR	▬▬▬▬
DEAD END CORR. TRAVEL LENGTH	▬▬▬▬
COMMON PATH OF TRAVEL LENGTH	▬▬▬▬
EXIT SIGN	⬇
EXIT ENTRANCE	➔
FIRE EXTINGUISHER	●



**1** SECOND FLOOR LIFE SAFETY PLAN  
1/16" = 1'-0"



**2** FIRST FLOOR LIFE SAFETY PLAN  
1/16" = 1'-0"